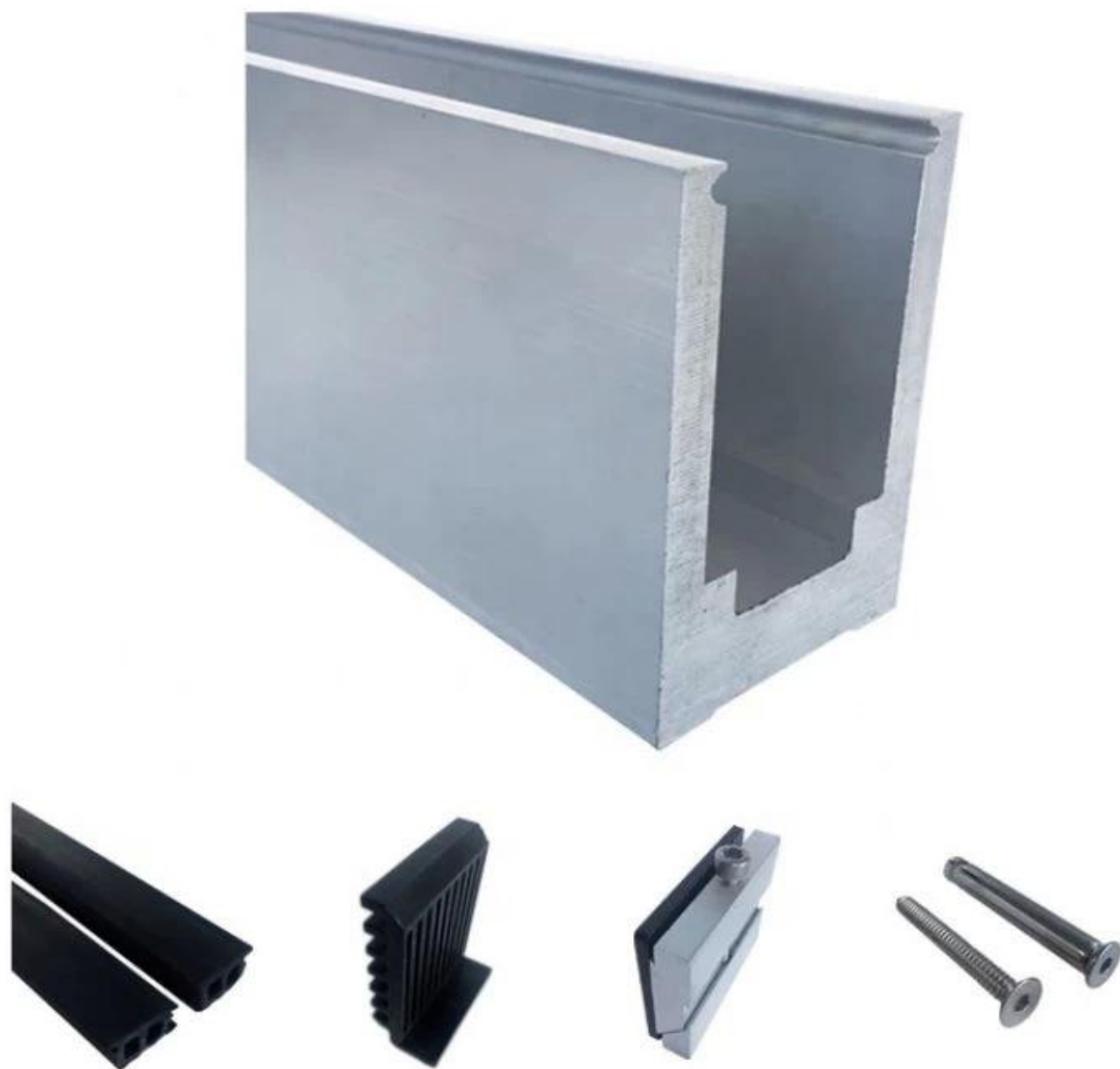


Aluminum U Base Channel usually fixed to the ground, placed in the bottom of glass railing systems to support glass. Balcony railing systems is one of the most common application that need s it, because it can give a broad vision to enjoy beautiful scenery when you are drinking a coffee or reading a book on the balcony.

Product Show

Solid design aluminum base channel

Fittings: waterproof tape, plastic and aluminum fittings, expansion bolts



Hollow design aluminum base channel

Fittings: waterproof tape, plastic and aluminum fittings, expansion bolts



Aluminum U Base Channel Types

LCH-A01/A02

LCH-A01



20 mm to 21.52 mm tempered glass

1 m aluminium groove contains the following accessories (excluding glass)



LCH-A02



20 mm to 21.52 mm tempered glass

1 m aluminium groove contains the following accessories (excluding glass)



LCH-B01/B02

LCH-B01



16 mm to 17.52 mm tempered glass

1 m aluminium groove contains the following accessories (excluding glass)



LCH-B02



16 mm to 17.52 mm tempered glass

1 m aluminium groove contains the following accessories (excluding glass)



LCH-C01/C02

LCH-C01



12 mm to 13.14 mm tempered glass

1 m aluminium groove contains the following accessories (excluding glass)



Aluminum trough 1 m Waterproof tape 2 meters



Aluminum plastic fittings 3 sets



Expansion screws 3 pieces

LCH-C02



12 mm to 13.14 mm tempered glass

1 m aluminium groove contains the following accessories (excluding glass)



Aluminum trough 1 m Decorative cover 2 meters



Aluminum plastic fittings 3 sets



Expansion screws 3 pieces

LCH-D01/D02

LCH-D01



12 mm to 13.14 mm tempered glass

1 m aluminium groove contains the following accessories (excluding glass)



Aluminum trough 1 m Waterproof tape 2 meters



Aluminum plastic fittings 3 sets



Expansion screws 3 pieces

LCH-D02



12 mm to 13.14 mm tempered glass

1 m aluminium groove contains the following accessories (excluding glass)



Aluminum trough 1 m Decorative cover 2 meters



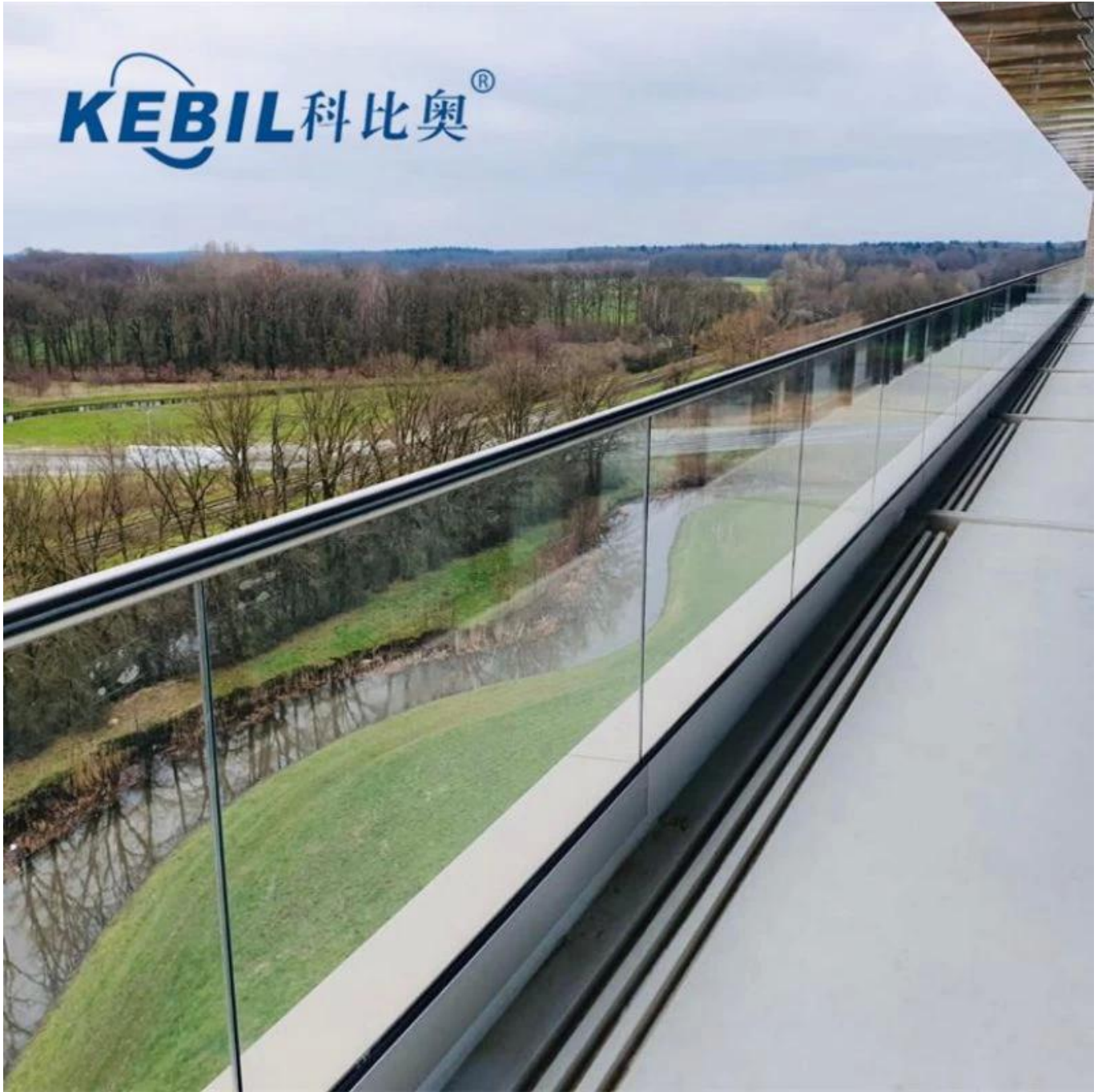
Aluminum plastic fittings 3 sets



Expansion screws 3 pieces

Project drawings

KEBIL 科比奥®





All U channel systems

U-Channel System



U-BASE CHANNEL

- Made of aluminum 6063 T5
- For use with 10-12mm glass
- 80x35mm
- 5.8m per length or as per your requirement



U-BASE CHANNEL

- Made of aluminum 6063 T5
- For use with 15-19mm glass
- 65.3x104mm
- 5.8m per length or as per your requirement



U-TOP CHANNEL

- Made of stainless steel 316L
- For use with 10-12mm glass
- ϕ 25.4mm
- 5.8m per length , or as per your requirement



U-TOP CHANNEL

- Made of stainless steel 316L
- For use with 10-12mm glass
- 25x20mm,
- 5.8m per length , or as per your requirement

Should you have any inquiries, please feel free to contact.

Frank Fang

Phone/WhatsApp/Wechat: +8615906261741

Skype: launch-02

Email: sales02@launch-china.cn