

Description (meet Australia and New Zealand standard)

--Material: stainless steel 316L

--Finish: 8K polished /brushed

--For 10-12mm tempered glass

--Square handrail cap size: 25x20mm, groove 14x14mm, 5.8 meter per length or as per your requirement, tube thickness 1.2mm

--Round handrail cap size: ϕ 25.4mm,groove 14x14mm, 5.8 meter per length or as per your requirement, tube thickness 1.2mm

--Plastic channel:2.9m per length or as per your requirement

--For both commercial and modern house home design

--For both wholesale and retail (We are factory)

--Application:indoor and outdoor use for balcony,deck,staircase,swimming pool fence...

--Sample: always available

A set of square handrail cap and accessories

20*25mm slot handrail

5.8 m per length



180 degree joiner



90 degree joiner



Vertical adjustable joiner



Horizontal I adjustable joiner



Wall to handrail joiner



End cap



A set of round handrail cap and accessories

Round Slot Handrail Tube
SS 316L ϕ 25.4mm
5.8m per length



90 ° corner connector



180° connector



End cap



rail-wall connector



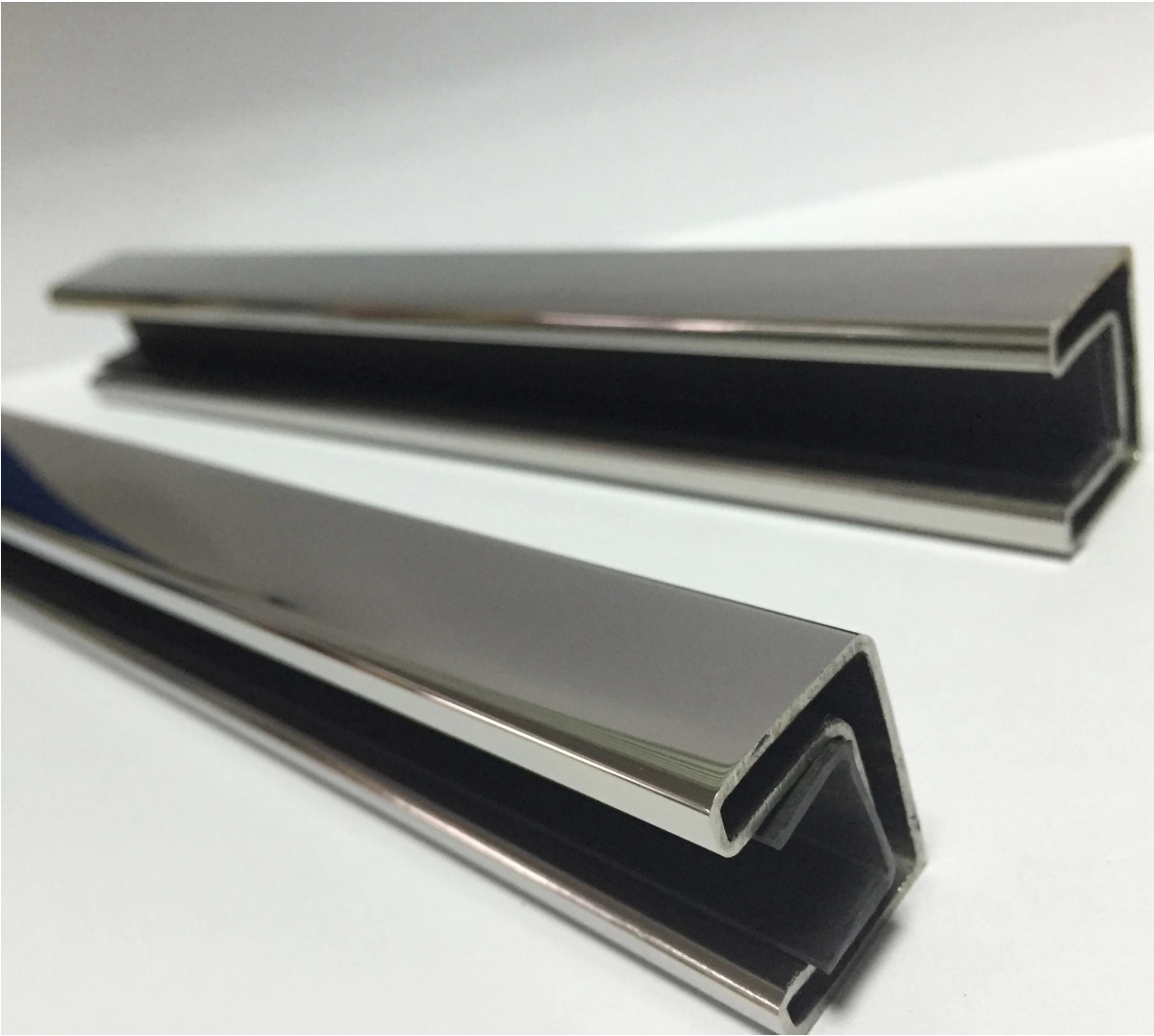
Details











Other size handrail tube is available.

SS316 ϕ 50.8mm handrail tube



one channel handrail tube



2 channel 90° handrail tube



2 channel 180° handrail tube



accessories for ϕ 50.8mm tube

Project in Australia

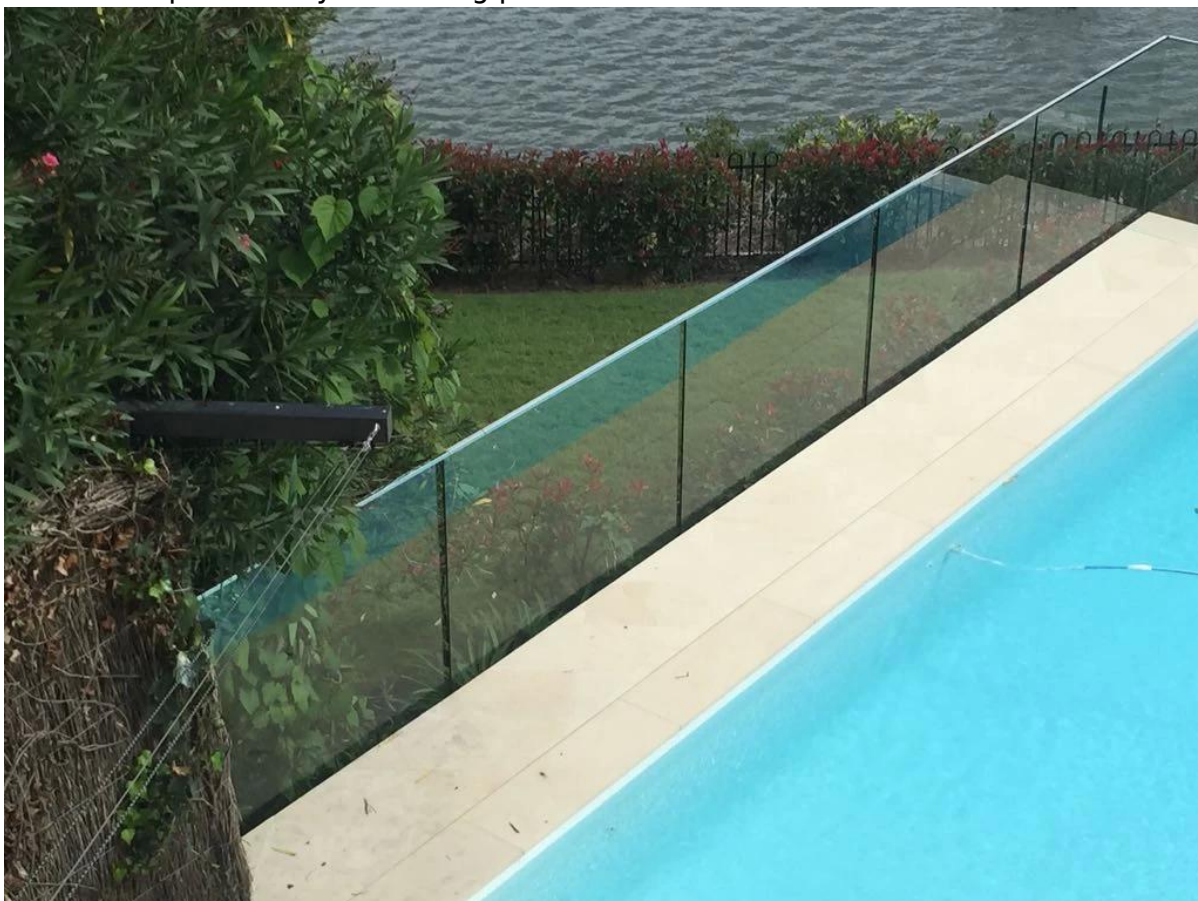
Hanrail cap and [glass standoff](#) design for outdoor balcony



Handrail cap and [glass spigot](#) design for staircase



Handrail cap for safety swimming pool fence



Packaging & Delivery

--packaging: plastic bag →cardboard sleeve→plastic sleeve →metal frame

--Regual lead time: 10-15 days if goods are in stock, 20-30 days if goods are not in stock. It depends on quantity.

--Shipping time: 15-20 days by sea.

Inner packaging



Cardboard sleeve



Metal frame (100 pieces into one metal frame)



Factory&Certification





Shenzhen Launch Co.,Ltd



www.launch-china.cn

Need a quote or any questions, please leave a message.

Or contact me as below info. will get back to you ASAP!

For any urgent enquiry, please get in touch on wechat: 973219879 or what's up: +86-13530506265 .



深圳市朗驰商贸有限公司
SHENZHEN LAUNCH CO., LTD.

朗驰国际有限公司
LAUNCH INTERNATIONAL LIMITED.

董 萍 Doris Dong

Senior Sales Representative

☎ (86) 135 3050 6265

深圳市南山区南山大道1092号亿利达大厦B区3栋5003

Room 5003, Building 3, Yilida Building, No.1092
Nanshan Road, Nanshan District, Shenzhen, China
postal code 518054

☎ (86-755) 8603 7559

☎ (86-755) 8637 2611

✉ sales04@launch-china.cn

🌐 www.launch-china.com

www.chinabalustrade.com