

# Black Powder Coating Color Stainless Steel Pipe End Cap For Round Handrail Post End

## Product Description

---

Product Name	Black Powder Coating Color Stainless Steel Pipe End Cap For Round Handrail Post End
Material	Stainless steel 316 / stainless steel 304
Finish	Mirror polished / satin brushed / black powder coating
For pipe size	Diameter 43mm, diameter 50.8mm,
For pipe thickness	1.5mm thickness
Custom size end cap	Available. We are factory
Payment Term	PayPal, West Union, T/T
Manufacture Method	Casting
Packaging Details	1) One piece into one bubble bag 2) 20 pcs into one cardboard carton Or packing as customers' requirements
Application	Stainless steel round handrail post pipe
Factory Inspection	Available
Sample	Available before order
MOQ	No limited. You can order as per your job requirement.
OEM & ODM Service	Available

## Pipe End Cap Details

---

1) LCH-209 product photos

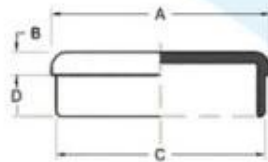
black powder coating color

**KEBIL** 科比奥®





# LCH-209



Part No.	size				Material	Finish
	A	B	C	D		
LCH-209/25.8	25	6	22	10	<ul style="list-style-type: none"> <li>▪ AISI 304</li> <li>▪ AISI 316</li> </ul>	<ul style="list-style-type: none"> <li>▪ Satin</li> <li>▪ Mirror</li> </ul>
LCH-209/30	30	5	27	12		
LCH-209/33	33	5	30	12		
LCH-209/38	38	5	35	12		
LCH-209/40	40	5	37	12		
LCH-209/43	43	5	40	12		
LCH-209/50.8	50.8	5	47.8	12		
LCH-209/63.5	63.5	6	60.5	12		
LCH-209/43	43	3	40	12		
LCH-209/50.8	50.8	3	47.8	12		

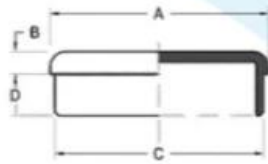
**KEBIL** 科比奥®



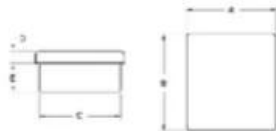


2) Other available pipe end caps

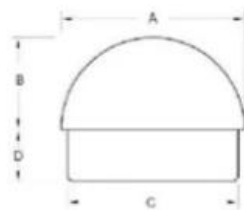




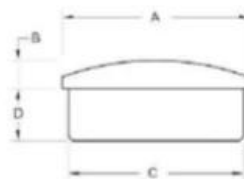
Part No.	size				Material	Finish
	A	B	C	D		
LCH-209/25.8	25	6	22	10	<ul style="list-style-type: none"> <li>▪ AISI 304</li> <li>▪ AISI 316</li> </ul>	<ul style="list-style-type: none"> <li>▪ Satin</li> <li>▪ Mirror</li> </ul>
LCH-209/30	30	5	27	12		
LCH-209/33	33	5	30	12		
LCH-209/38	38	5	35	12		
LCH-209/40	40	5	37	12		
LCH-209/43	43	5	40	12		
LCH-209/50.8	50.8	5	47.8	12		
LCH-209/63.5	63.5	6	60.5	12		
LCH-209/43	43	3	40	12		
LCH-209/50.8	50.8	3	47.8	12		



Part No.	size					Material	Finish
	A	B	C	D	E		
LCH-211/20	20	20	17	5	12	<ul style="list-style-type: none"> <li>▪ AISI 304</li> <li>▪ AISI 316</li> </ul>	<ul style="list-style-type: none"> <li>▪ Satin</li> <li>▪ Mirror</li> </ul>
LCH-211/25	25	25	22	5	12		
LCH-211/30	30	30	27	5	12		
LCH-211/40	40	40	37	5	12		
LCH-211/50	50	50	47	5	12		
LCH-212	40	20	37x17	5	12		



Part No.	size				Material	Finish
	A	B	C	D		
LCH-213/43	43	22	40	12	<ul style="list-style-type: none"> <li>▪ AISI 304</li> <li>▪ AISI 316</li> </ul>	<ul style="list-style-type: none"> <li>▪ Satin</li> <li>▪ Mirror</li> </ul>
LCH-213/50.8	50.8	25	47.8	12		



Part No.	size				Material	Finish
	A	B	C	D		
LCH-214/43	43	6	40	12	<ul style="list-style-type: none"> <li>▪ AISI 304</li> <li>▪ AISI 316</li> </ul>	<ul style="list-style-type: none"> <li>▪ Satin</li> <li>▪ Mirror</li> </ul>
LCH-214/50.8	50.8	10	47.8	12		

## FAQ

1.Are you factory?

Yes, we are factory.

2.Do you offer free samples?

Yes, we offer free samples, but customers need to pay express charges.

### 3.What materials do you have?

We have the material of stainless steel 304, 316, 316L and Duplex 2205.

### 4.What is your MOQ?

MOQ of order required is 1 pc.

### 5.What kind of payment do you accept?

We accept the payment of T/T, LC, PayPal, West Union, etc.

### 6.What is your payment term?

Our payment term is T/T 100% or 30/70 or L/C at sight .

### 7.What is your delivery time?

Our delivery time is from 5 days to 30 days based on your quantity.

### 8.Do you offer OEM & ODM service?

Yes we offer OEM&ODM service.

### 9.Do you offer after-sales service?

Yes, we offer after-sales service. Any complaint for orders will be dealt with in time within 12 hours.

## Contact

---

Any enquiries or questions, please leave a message. Will get back to you as soon as possible!

For any urgent enquiry, please get in touch below:

-Contact: Wendy

-Email: sales04@launch-china.cn

-Office: (86-755) 8603 7559

-Skype: launch\_04

-Mob/whats APP: +86-15989339827