

Powder coating black color steel hand rails for staircase outdoor or indoor use . All necessary brackets/screws will be provided .

Accessories for steel hand rails-

Staircase handrail middle rail to post bracket -



Staircase handrail middle bar,32*32mm -



Staircase handrail post 40*40mm-



Staircase top handrail tube-



After assembly-



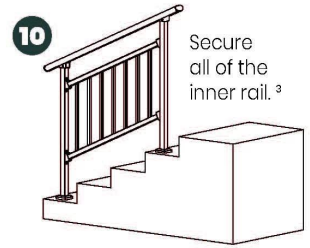
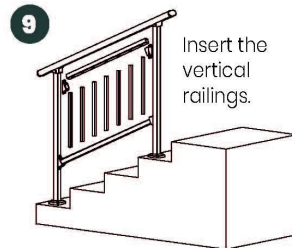
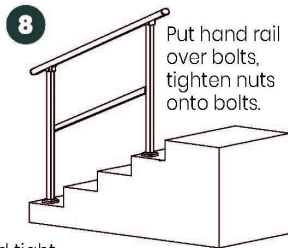
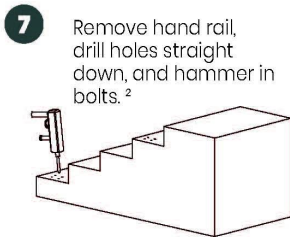
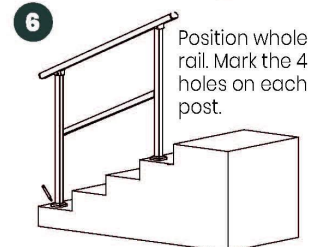
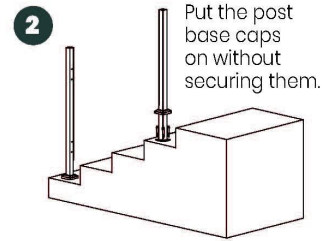
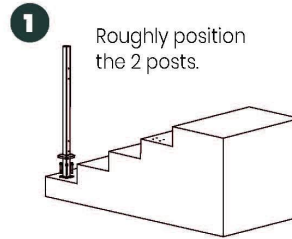
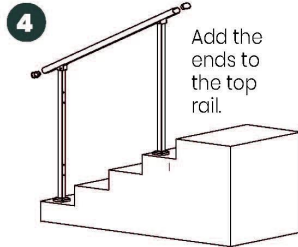
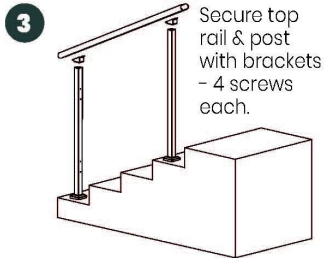


Installation guides-

Guard Rail Assembly Instructions

Tools Required: Electrical Power Drill
(Impact Drill Preferred)

Overview: Assemble the rail and position it before marking holes for drilling. Improper installation can lead to failure of rail system or injury.



² Double check posts are parallel and tight against inside rail before marking holes for drilling.

¹ Inside rail will be loose until each post is secured to the ground.

³ Push and pull top rail & inside rail to ensure all is secure.

Production & packaging of staircase steel handrails at our workshop-



