

Brushed stainless steel 316 stair glass railing glass standoff for 1/2" glass
50mm diameter wood mount or concrete mount .

1. Specifications for glass standoff

Model No	SF-50
Dimension	50*12mm cap , 50*30/50mm body
Mounting screw	M12*120 bolt for concrete mount ; M12*72 wood screw for wood mount
Fittings included	silicon rubber , nylon washer
For glass thickness	8mm to 19mm
Glass holes	needed , 16mm holes needed on glass panels
MOQ	10 pcs
Lead time	3-25 days , depending on stock
Apply	frameless glass railings for staircase , balcony , deck , pool fence etc .
Payment term :	Paypal ; T/T;

2. Glass standoff photos & drawings

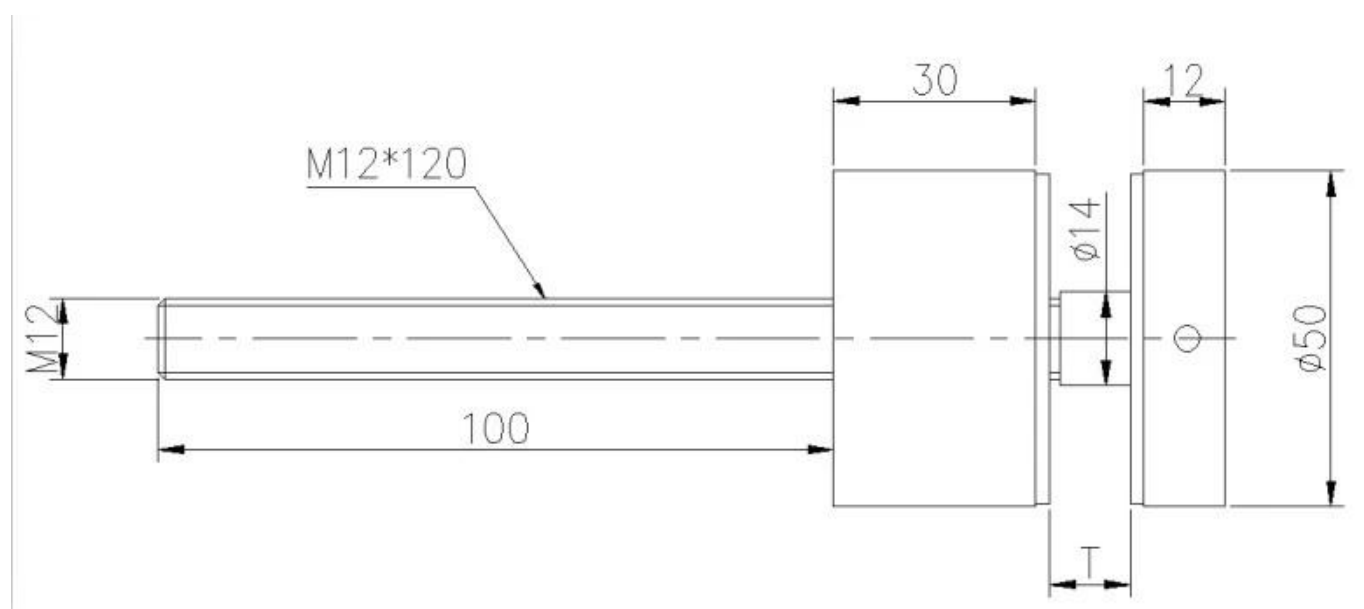




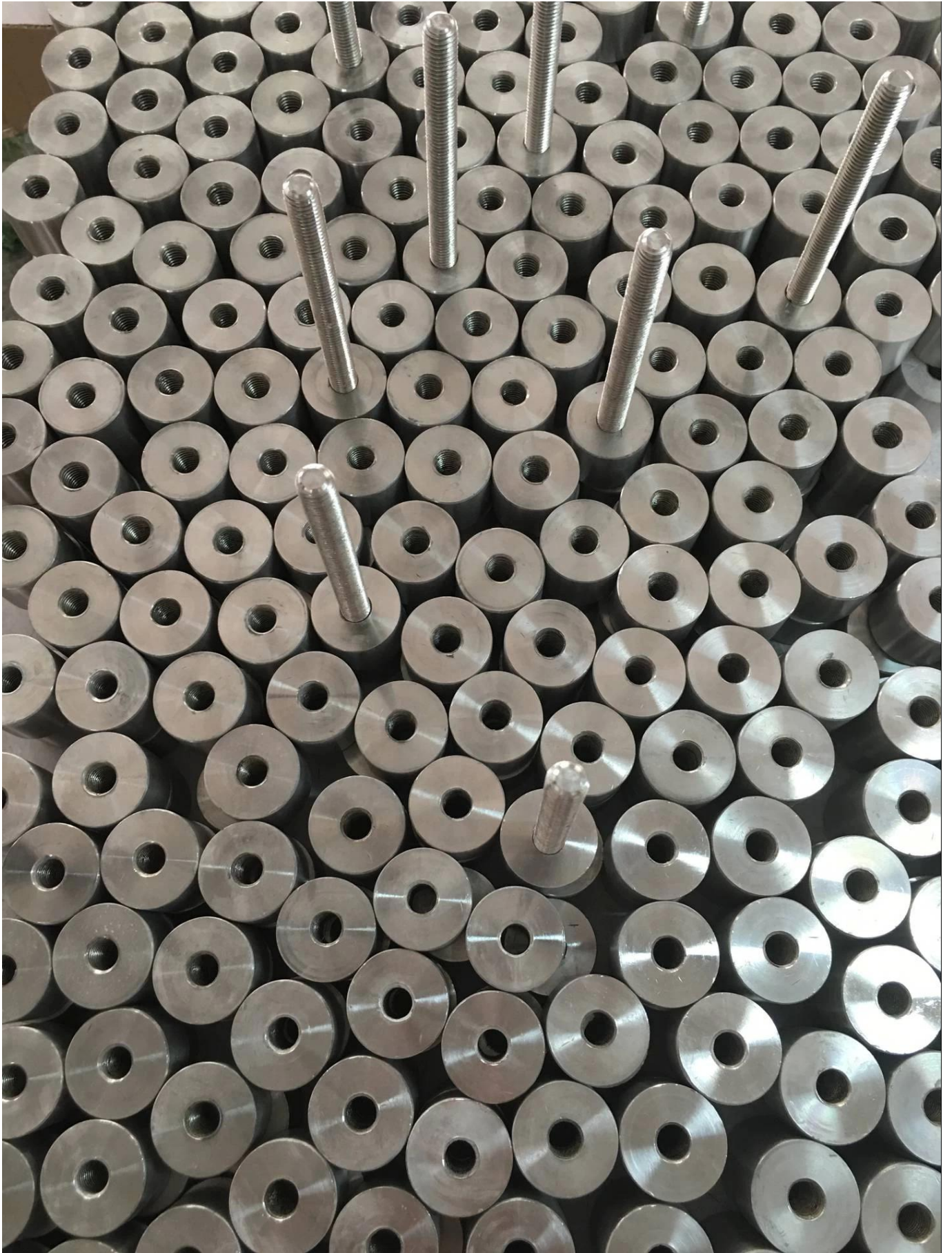
SF-50

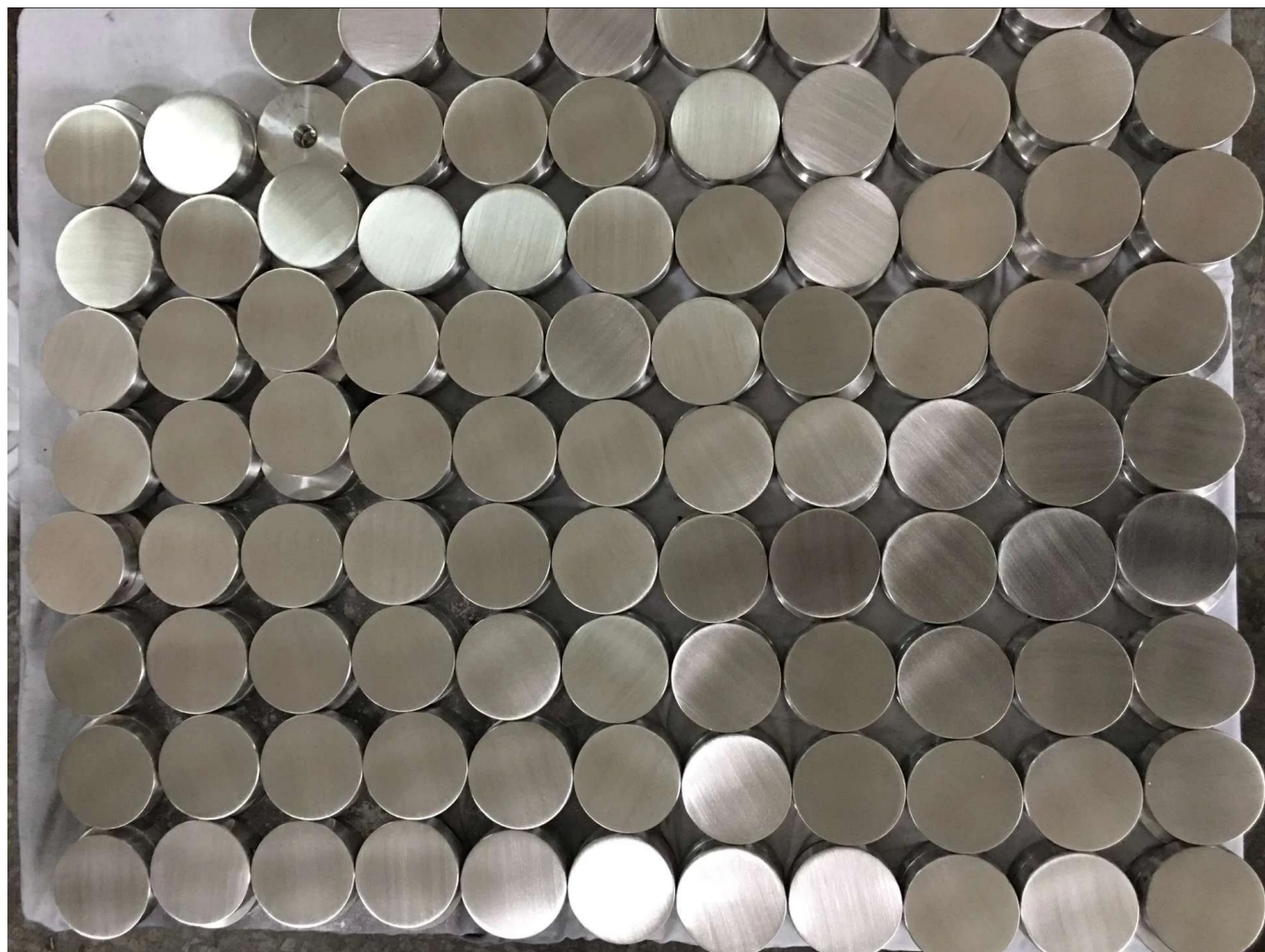


SF-50



3. Production photos for glass standoff -









4. Project photos of glass standoff -







