

Spec.

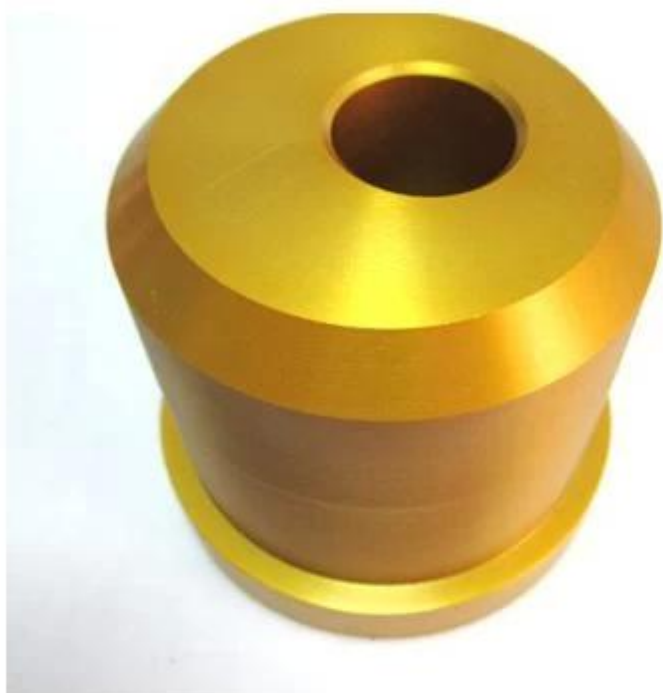
Drawing format required	.igs .dwg .pdf .step
certificate	ISO9001:2008
precise tolerance	$\pm 0.01\text{mm}$
MOQ	sample order can be 1 piece
material	aluminum ,stainless steel, plastic, copper, steel etc.
finish	polished , brushed , anodising , powder coating , painting , plating ect.
application	car / auto parts, LED, flashlight, auto part, E-cigarette etc
sample lead time	normally 2 weeks
Payment term	T/T Paypal
sea port	SHENZHEN

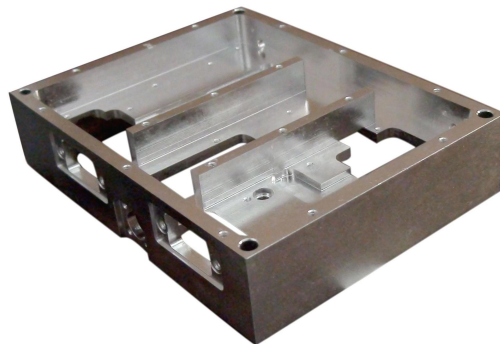
Shenzhen launch has been making cnc custom machining parts since 2004 , we have made cnc parts applied in different industries such as machinery , medical equipement , electronical parts , aircrafts equipments etc .

Below are photos of different cnc machining parts we have made .

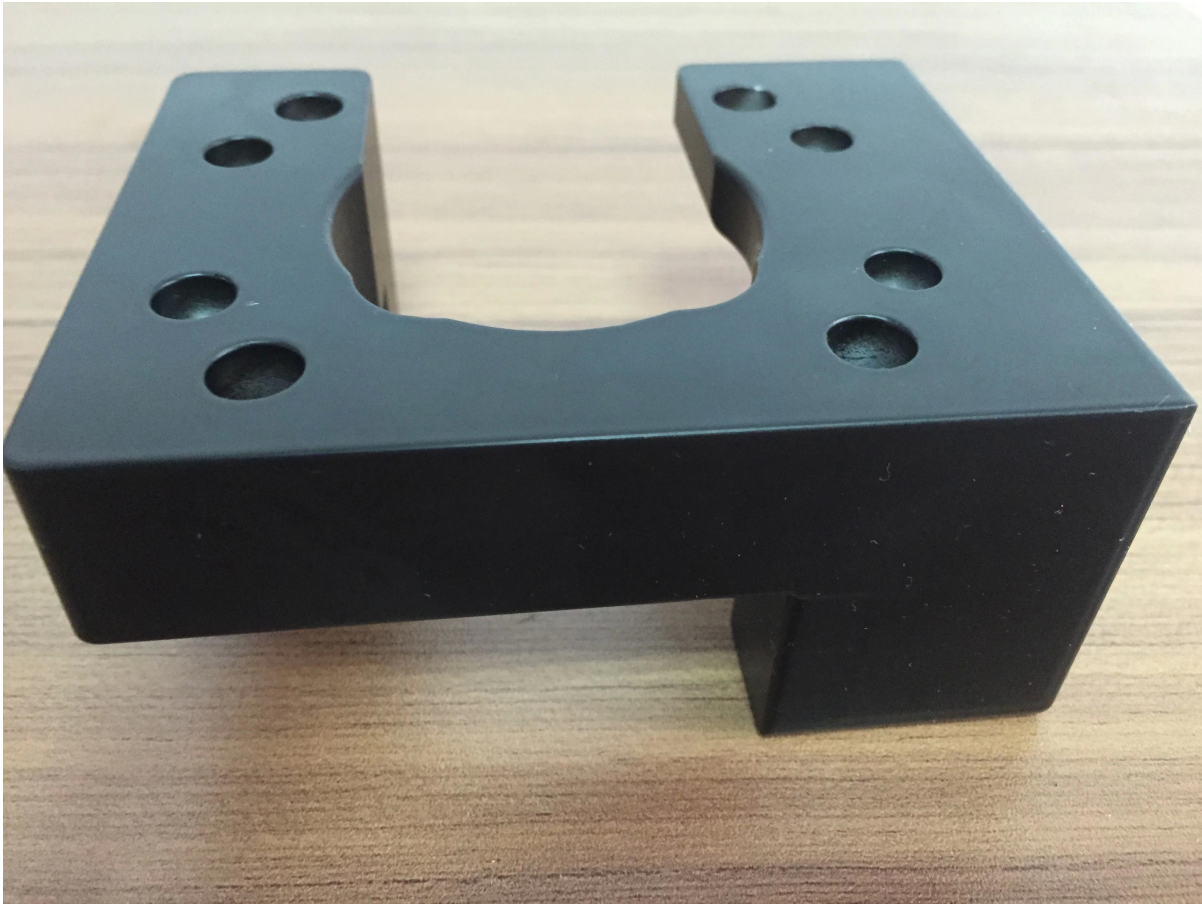










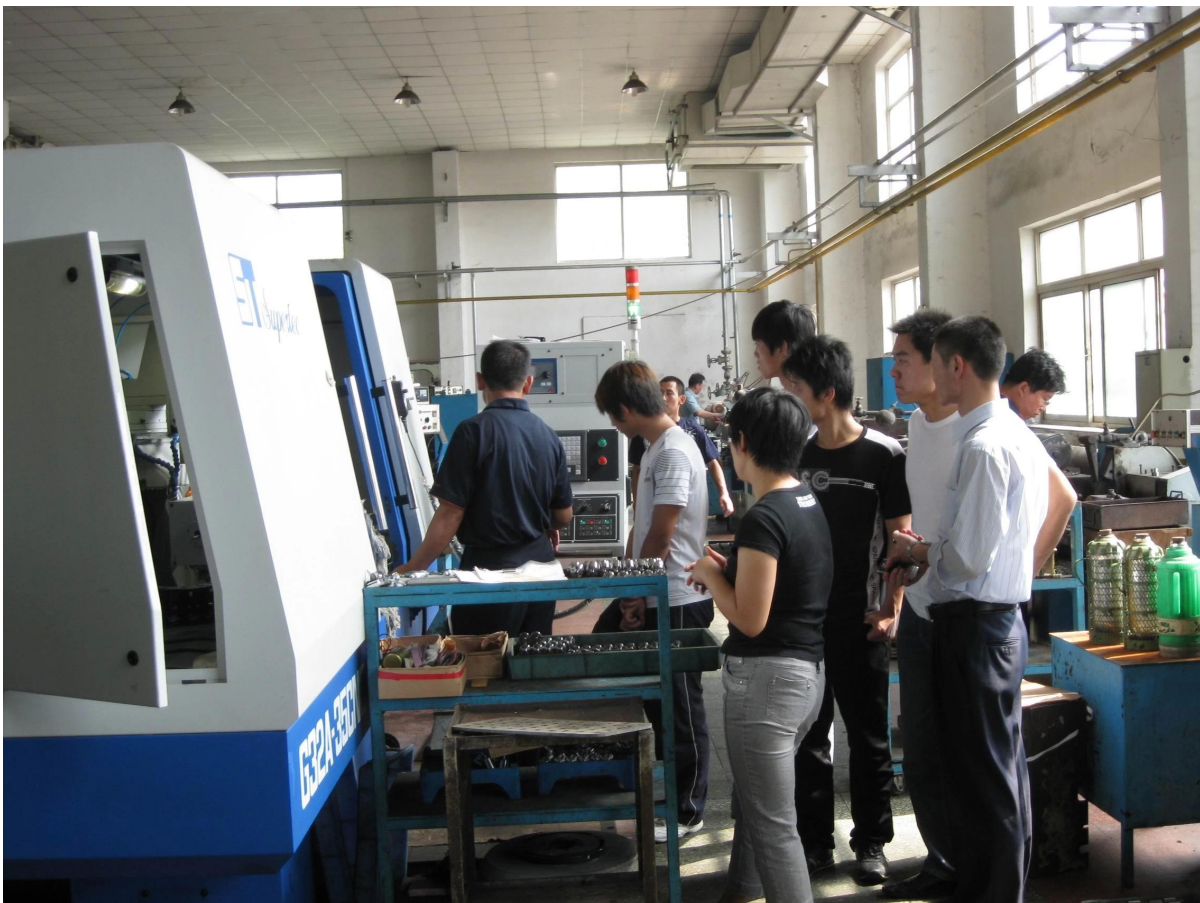


Factory and machining;









We custom make cnc machining parts as per customers drawings and designs , please kindly send drawings in .igs . step. dwg files for us to

check and quote !

Thanks for your time ,

Celia

email : sales01@launch-china.cn

Ph 86-755-86037559

Mob 86-13590273543