

Description

--Meet Australian standard, certified glass spigot. AS1926.1 AS2820

--Made of stainless steel 316L

--Finish: polished, brushed or passivation treatment(superior corrosion resistance and strength compared to polished and brushed ones)

--Friction fit, suitable for 10-12mm toughened glass (glass spigot for 15-19mm glass is available)

--Designed for mounting to tiles, concrete and timber decking where core drilling is not possible.(For core mount friction fit spigot, go [HERE](#))

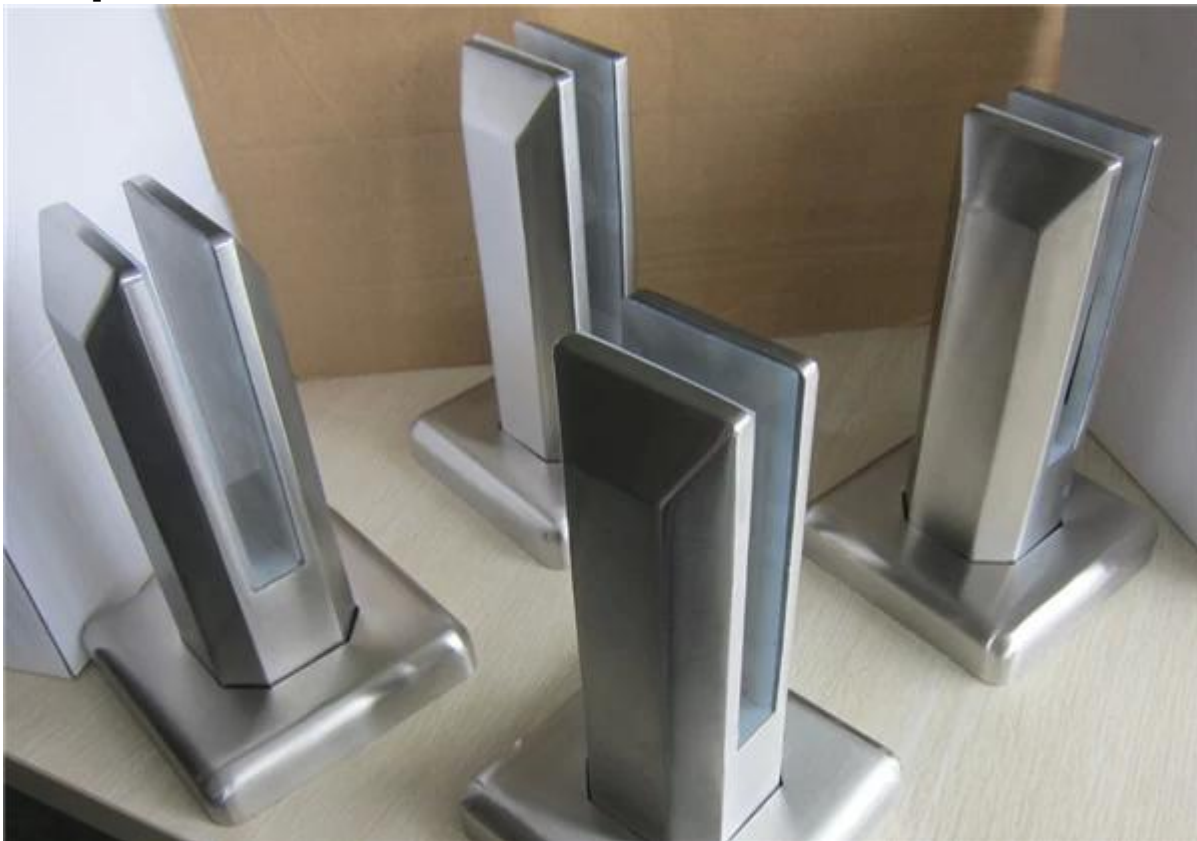
Glass spigot details

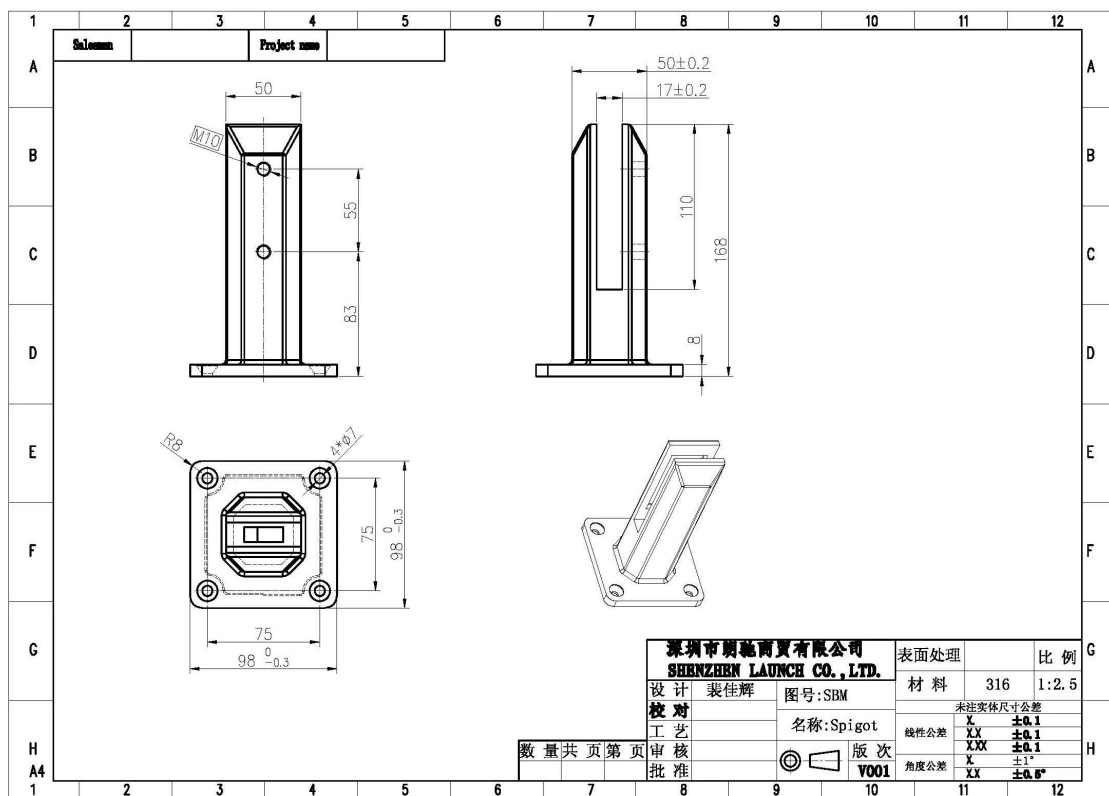
Brushed square glass spigot **SBM-2**

-Net weight:1.577kg/piece

-Height: 168mm

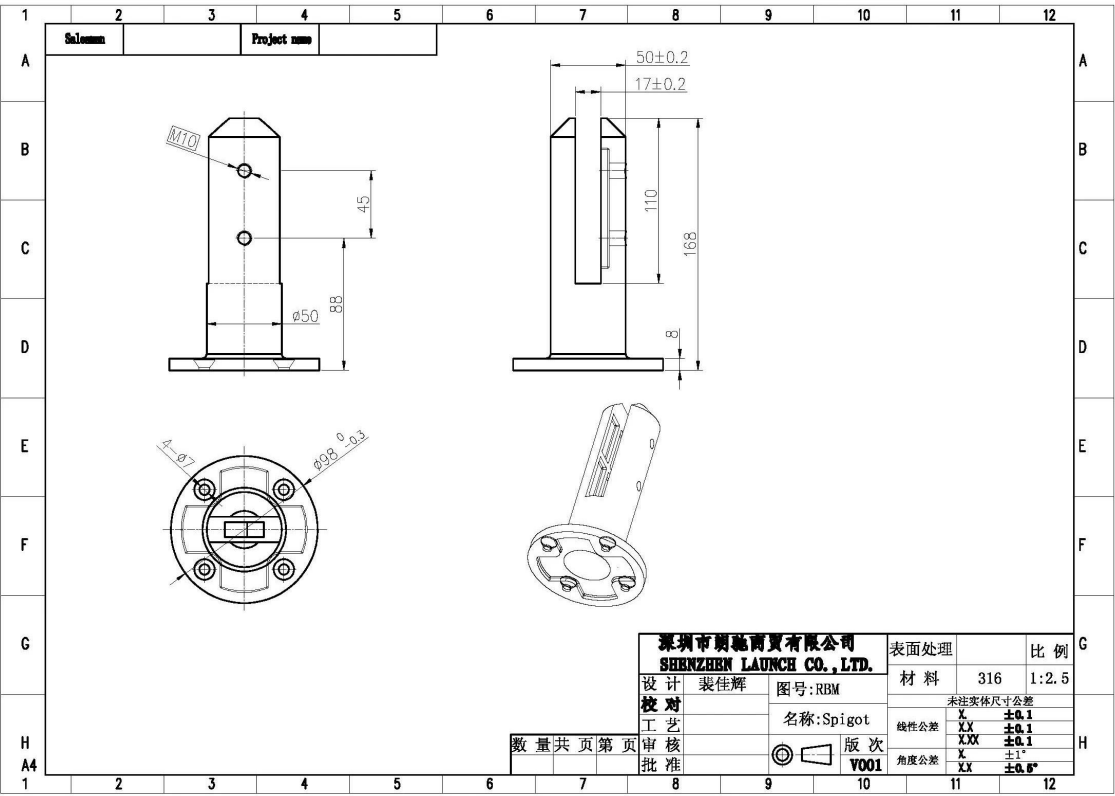
-Base plate size: 100x100mm





Polished round glass spigot **RBM-2**
 -Net weight:1.32kg/piece
 -Hight: 168mm
 -Base plate size: φ100mm





Glass spigot project

Round spigot for frameless swimming pool fence



Square glass spigot for balcony frameless glass railing design



Glass spigot for stair case



Strength test report

Results Summary

(For details of individual tests, refer to the tables on the following pages.)

ID	Item/Heat No.	Dimensions/Type/Details	Finish	Overall Assessment
14117/01	SSBM316	180mm High, 50mm Square, Base Plate 316 Stainless steel	316L	COMPLIES

Remarks

After completion of the testing, the spigot was found to be in sound condition with no breakage, tearing or signs of fracture and no looseness of the fixings.



Colin Lorrimer
Metallurgical Testing Manager



Accreditation No. ~~14117~~
Accredited for compliance
with ISO/IEC 17025

Packaging & Delivery

--One pc into one plastic bag, then into one box. 12 pcs into one carton.

--Shipping option: by sea(10-15 days), by air(3-5 days)





Factory & Certification





Shenzhen Launch Co.,Ltd



www.launch-china.cn

Need a quote or any questions, please leave a message.

Or contact me as below info. will get back to you ASAP!

For any urgent enquiry, please get in touch on wechat: 973219879 or what's up: +86-13530506265.



深圳市朗驰商贸有限公司
SHENZHEN LAUNCH CO., LTD.

朗驰国际有限公司
LAUNCH INTERNATIONAL LIMITED.

董 萍 Doris Dong

Senior Sales Representative

☎ (86) 135 3050 6265

深圳市南山区南山大道1092号亿利达大厦B区3栋5003

Room 5003, Building 3, Yilida Building, No.1092
Nanshan Road, Nanshan District, Shenzhen, China
postal code 518054

☎ (86-755) 8603 7559

☎ (86-755) 8637 2611

✉ sales04@launch-china.cn

💻 www.launch-china.com

www.chinabalustrade.com