

China Black [Stainless Steel Tube Pipe](#)

Product Description

Product Name	China Black Stainless Steel Tube/Pipe
Material	Stainless steel 304/316
Finish	Mirror polished or satin brushed
Color	Black,gold,or customers' color
Standard Length	5.8m per length, or customers' length
Tube/pipe Types	1) Square stainless steel tube/pipe 2) Round stainless steel tube/pipe
Application	Balustrade handrail tube,stainless steel railing,stainless steel post,glass railing handrails
Surface Treatment	Vacuum plating
Minimum Order Quantity	50 pieces
Sample	Available to check quality before order
Factory Inspection	Available
Packaging	Bubble bag - cardboard sleeve - metal frame
Certified	Yes
OME & ODM Service	Available

Stainless steel tube/pipe Details

Black plating stainless steel tube pipe



Gold plating stainless steel tube/pipe



Normal finish stainless steel tube/pipe



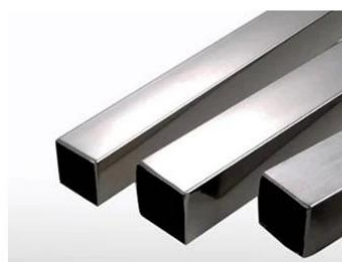
Stainless Steel Tube/pipe Catalogue

STAINLESS STEEL HANDRAIL TUBE

Round tube	
Material	Stainless steel 304L/316L
Finish	Satin or mirror
Sizes	Φ 38.1 x 1.5 mm Φ 42.4 x 1.5 mm Φ 50.8 x 1.5 mm



Square tube	
Material	Stainless steel 304L/316L
Finish	Satin or mirror
Sizes	38 x 38 x 1.5 mm 40 x 40 x 1.5 mm 50 x 50 x 1.5 mm



Rectangular tube	
Material	Stainless steel 304L/316L
Finish	Satin or mirror
Sizes	50 x 10 x 1.5 mm 50 x 25 x 1.5 mm

STAINLESS STEEL SLOT HANDRAIL TUBE

Round slot tube	
Material	Stainless steel 304L /316L
Finish	Satin or mirror
Sizes	Φ 38 x 1.5 , 15x15mm single slot Φ 42x1.5 mm , 15x15mm / 24x24mm single slot Φ 50.8x1.5 mm , 15x15mm single slot



Square slot tube	
Material	Stainless steel 304L /316L
Finish	Satin or mirror
Sizes	- 31.8x31.8x1.5 , 15x15 mm single slot - 40x40x1.5 , 15x15 mm / 20x20mm single slot - 50x25x1.5 , 15x15mm single /double slot

Stainless steel Tube/pipe Packaging

1. Bubble bag - cardboard sleeve - metal frame
2. Or packing as customers' requirements.





FAQ

1.Are you factory?

Yes, we are factory.

2.Do you offer free samples?

Yes, we offer free samples, but customers need to pay express charges.

3.What materials do you have?

We have the material of stainless steel 304, 316, 316L and Duplex 2205.

4.What is your MOQ?

MOQ of order required is 1 pc.

5.What kind of payment do you accept?

We accept the payment of T/T, LC, PayPal, West Union, etc.

6.What is your payment term?

Our payment term is T/T 100% or 30/70 or L/C at sight .

7.What is your delivery time?

Our delivery time is from 5 days to 30 days based on your quantity.

8.Do you offer OEM & ODM service?

Yes we offer OEM&ODM service.

9.Do you offer after-sales service?

Yes, we offer after-sales service. Any complaint for orders will be dealt with in time within 12 hours.

Contact

Any enquiries or questions, please leave a message. Will get back to you as soon as possible!

For any urgent enquiry, please get in touch as below:

-Email: sales04@launch-china.cn

-Tel: (86-755) 8603 7559

-Skype: launch_04

-Mob/whats APP: +86-13530506265



深圳市朗驰商贸有限公司
SHENZHEN LAUNCH CO., LTD.

朗驰国际有限公司
LAUNCH INTERNATIONAL LIMITED.

董 萍 Doris Dong

Senior Sales Representative

☎ (86) 135 3050 6265

深圳市南山区南山大道1092号亿利达大厦B区3栋5003

Room 5003, Building 3, Yilida Building, No.1092
Nanshan Road, Nanshan District, Shenzhen, China
postal code 518054

☎ (86-755) 8603 7559

☎ (86-755) 8637 2611

✉ sales04@launch-china.cn

💻 www.launch-china.com

www.chinabalustrade.com