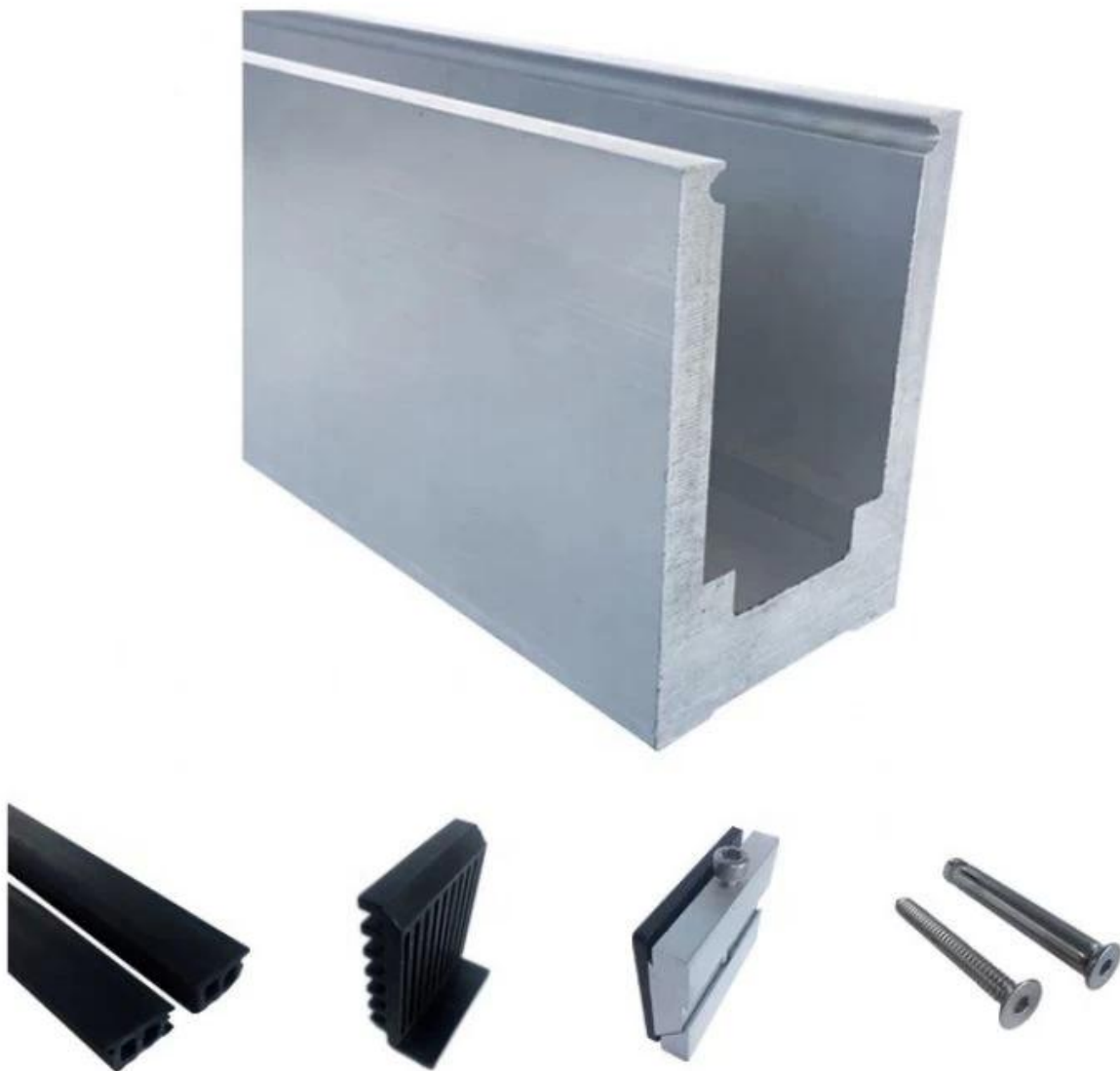


The base aluminum U channel is usually fixed to the ground, and placed at the bottom of glass balustrade systems to support the glass. Balcony railing systems are one of the most common applications you need, because they can give a wide view to enjoy the beautiful scenery when drinking coffee or reading a book on the balcony.

Product Show

Solid design aluminum channel base

Fittings: Waterproof tape, plastic and aluminum connectors, expansion bolts



Aluminum base channel hollow design

Fittings: Waterproof tape, plastic and aluminum connectors, expansion bolts



Types of base aluminum U channels

LCH-A01/A02

LCH-A01



20 mm to 21.52 mm tempered glass

1 m aluminium groove contains the following accessories
(excluding glass)



Aluminum trough 1 m Waterproof tape
2 meters



Aluminum plastic fittings
3 sets



Expansion screws
3 pieces

LCH-A02



20 mm to 21.52 mm tempered glass

1 m aluminium groove contains the following accessories
(excluding glass)



Aluminum trough 1 m



Decorative cover
2 meters



Aluminum plastic fittings
3 sets



Expansion screws
3 pieces

LCH-B01/B02

LCH-B01



16 mm to 17.52 mm tempered glass

1 m aluminium groove contains the following accessories
(excluding glass)



Aluminum trough 1 m Waterproof tape
2 meters



Aluminum plastic fittings
3 sets



Expansion screws
3 pieces

LCH-B02



16 mm to 17.52 mm tempered glass

1 m aluminium groove contains the following accessories
(excluding glass)



Aluminum trough 1 m



Decorative cover
2 meters



Aluminum plastic fittings
3 sets



Expansion screws
3 pieces

LCH-C01/C02

LCH-C01



12 mm to 13.14 mm tempered glass

1 m aluminium groove contains the following accessories
(excluding glass)



Aluminum trough 1 m Waterproof tape 2 meters



Aluminum plastic fittings 3 sets



Expansion screws 3 pieces

LCH-C02



12 mm to 13.14 mm tempered glass

1 m aluminium groove contains the following accessories
(excluding glass)



Aluminum trough 1 m



Decorative cover 2 meters



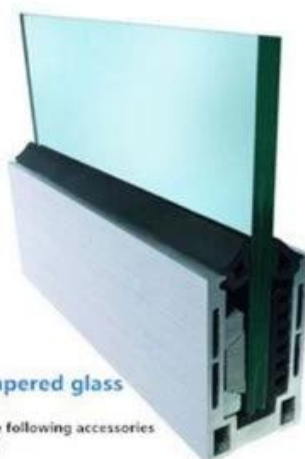
Aluminum plastic fittings 3 sets



Expansion screws 3 pieces

LCH-D01/D02

LCH-D01



12 mm to 13.14 mm tempered glass

1 m aluminium groove contains the following accessories
(excluding glass)



Aluminum trough 1 m Waterproof tape 2 meters



Aluminum plastic fittings 3 sets



Expansion screws 3 pieces

LCH-D02



12 mm to 13.14 mm tempered glass

1 m aluminium groove contains the following accessories
(excluding glass)



Aluminum trough 1 m



Decorative cover 2 meters



Aluminum plastic fittings 3 sets



Expansion screws 3 pieces

Project drawings

KEBIL 科比奥®





All U channel systems

U-Channel System



U-BASE CHANNEL

- Made of aluminum 6063 T5
- For use with 10-12mm glass
- 80x35mm
- 5.8m per length or as per your requirement



U-BASE CHANNEL

- Made of aluminum 6063 T5
- For use with 15-19mm glass
- 65.3x104mm
- 5.8m per length or as per your requirement



U-TOP CHANNEL

- Made of stainless steel 316L
- For use with 10-12mm glass
- ϕ 25.4mm
- 5.8m per length , or as per your requirement



U-TOP CHANNEL

- Made of stainless steel 316L
- For use with 10-12mm glass
- 25x20mm,
- 5.8m per length , or as per your requirement

If you have any inquiries, please feel free to contact.

Frank Fang

Phone/WhatsApp/Wechat: 8615906261741

Skype:launch 02

Email: sales02@launch-china.cn