

China Suppliers Shenzhen Stainless Steel [Glass Mounted Handrail Bracket](#)

Product Description

Product Name	China Suppliers Shenzhen Stainless Steel Glass Mounted Handrail Bracket
Material	Stainless steel 304 or 316
Finish	Mirror polished or satin brushed
Mounting	Glass mounting
For Glass Thickness	Customer's requirement
Adaptor plate	Radius adaptor plate and flat adaptor plate both available
,Mold	Adjustable glass mounted handrail bracket
Application	Glass railing handrail, balustrade handrail bracket, stainless steel railing...
Glass hole size	Diameter 16mm hole required in glass
Sample	Available to check quality before order
Factory Inspection	Available
Safety Packaging	Bubble bag - cardboard box - carton
OME & ODM Service	Available
Custom handrail bracket	Available. We are factory.

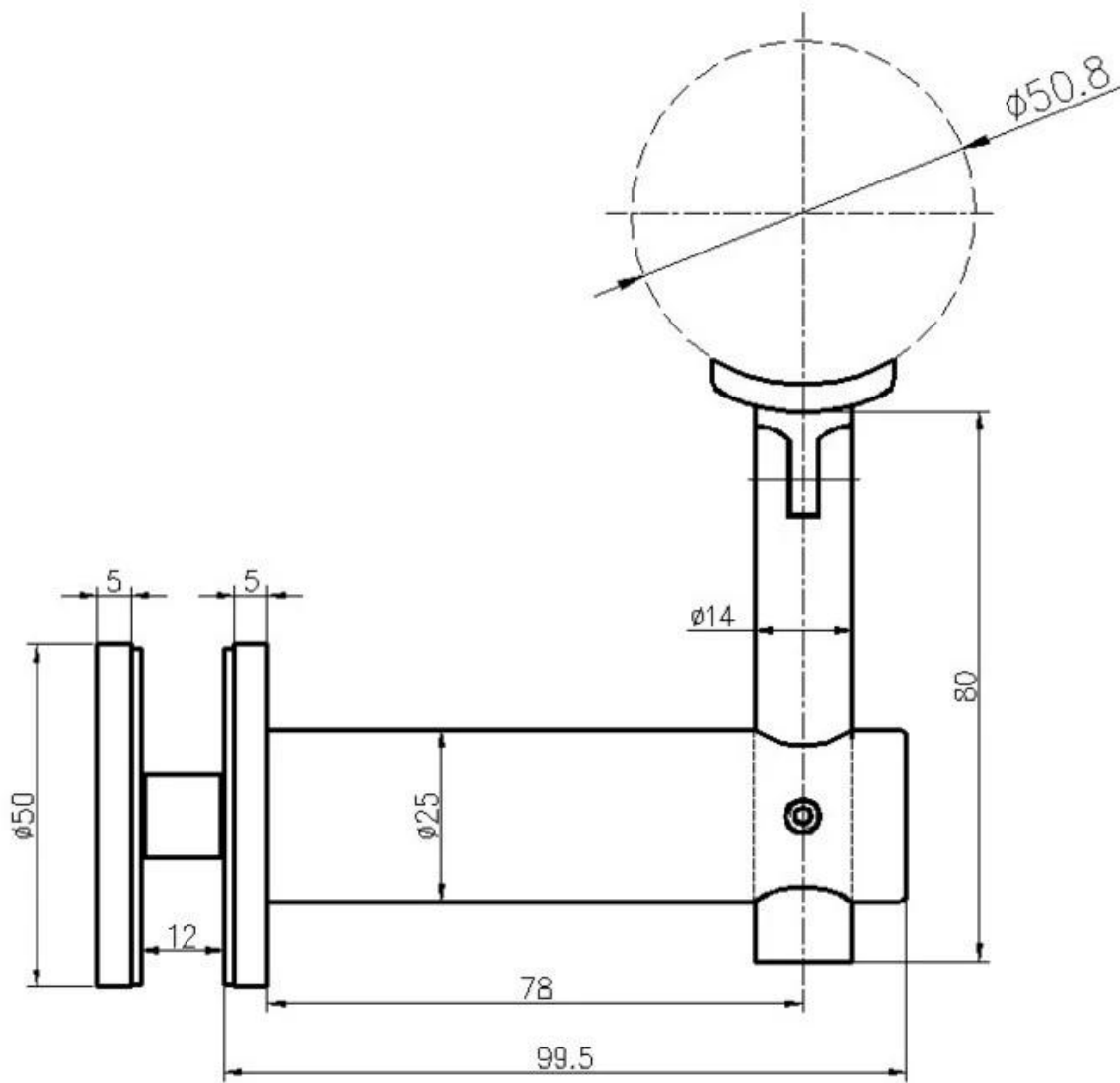
Glass Mounted Handrail Bracket Details

Mirro and satin finish






Handrail bracket technical drawing




All handrail brackets we provided

STAINLESS STEEL BALUSTRADE AND FITTINGS


KEBIL 科比奧
SHENZHEN LAUNCH CO., LTD




Part No.	Material	Finish	Size																
• P702R	• AISI 304 • AISI 316	• Satin • Mirror	<table border="1"> <tr> <th>A</th> <th>B</th> <th>C</th> <th>D</th> </tr> <tr> <td>85</td> <td>60</td> <td>70</td> <td>65</td> </tr> <tr> <td>E</td> <td></td> <td></td> <td></td> </tr> <tr> <td>R-21.5</td> <td></td> <td></td> <td></td> </tr> </table>	A	B	C	D	85	60	70	65	E				R-21.5			
A	B	C	D																
85	60	70	65																
E																			
R-21.5																			




Part No.	Material	Finish	Size																
• P703	• AISI 304 • AISI 316	• Satin • Mirror	<table border="1"> <tr> <th>A</th> <th>B</th> <th>C</th> <th>D</th> </tr> <tr> <td>65</td> <td>60</td> <td>70</td> <td>12</td> </tr> <tr> <td>E</td> <td></td> <td></td> <td></td> </tr> <tr> <td>R-21.5</td> <td></td> <td></td> <td></td> </tr> </table>	A	B	C	D	65	60	70	12	E				R-21.5			
A	B	C	D																
65	60	70	12																
E																			
R-21.5																			




Part No.	Material	Finish	Size																
• P703R	• AISI 304 • AISI 316	• Satin • Mirror	<table border="1"> <tr> <th>A</th> <th>B</th> <th>C</th> <th>D</th> </tr> <tr> <td>65</td> <td>60</td> <td>70</td> <td>12</td> </tr> <tr> <td>E</td> <td></td> <td></td> <td></td> </tr> <tr> <td>R-21.5</td> <td></td> <td></td> <td></td> </tr> </table>	A	B	C	D	65	60	70	12	E				R-21.5			
A	B	C	D																
65	60	70	12																
E																			
R-21.5																			



Part No.	Material	Finish	Size																
• P704	• AISI 304 • AISI 316	• Satin • Mirror	<table border="1"> <tr> <th>A</th> <th>B</th> <th>C</th> <th>D</th> </tr> <tr> <td>65</td> <td>60</td> <td>70</td> <td>12</td> </tr> <tr> <td>E</td> <td>F</td> <td>G</td> <td></td> </tr> <tr> <td>43</td> <td>40</td> <td>15</td> <td></td> </tr> </table>	A	B	C	D	65	60	70	12	E	F	G		43	40	15	
A	B	C	D																
65	60	70	12																
E	F	G																	
43	40	15																	



Part No.	Material	Finish	Size
• P705	• AISI 304 • AISI 316	• Satin • Mirror	• as per drawing



Part No.	Material	Finish	Size
• P706	• AISI 304 • AISI 316	• Satin • Mirror	• as per drawing



Part No.	Material	Finish	Size
• P707	• AISI 304 • AISI 316	• Satin • Mirror	• as per drawing



Part No.	Material	Finish	Size
• P708	• AISI 304 • AISI 316	• Satin • Mirror	• as per drawing

END CAP





Part No.	size	Material	Finish
LCH-209/25.8	25 5 22 10	• AISI 304 • AISI 316	• Satin • Mirror
LCH-209/30	30 5 27 12		
LCH-209/33	33 5 30 12		
LCH-209/38	38 5 35 12		
LCH-209/40	40 5 37 12		
LCH-209/43	43 5 40 12		
LCH-209/50.8	50.8 5 47.8 12		
LCH-209/63.5	63.5 6 60.5 12		
LCH-209/43	43 3 40 12		
LCH-209/50.8	50.8 3 47.8 12		



Part No.	size	Material	Finish
LCH-211/20	20 17 5 12	• AISI 304 • AISI 316	• Satin • Mirror
LCH-211/25	25 25 22 5 12		
LCH-211/30	30 30 27 5 12		
LCH-211/40	40 40 37 5 12		
LCH-211/50	50 50 47 5 12		
LCH-212	40 20 30 5 12		

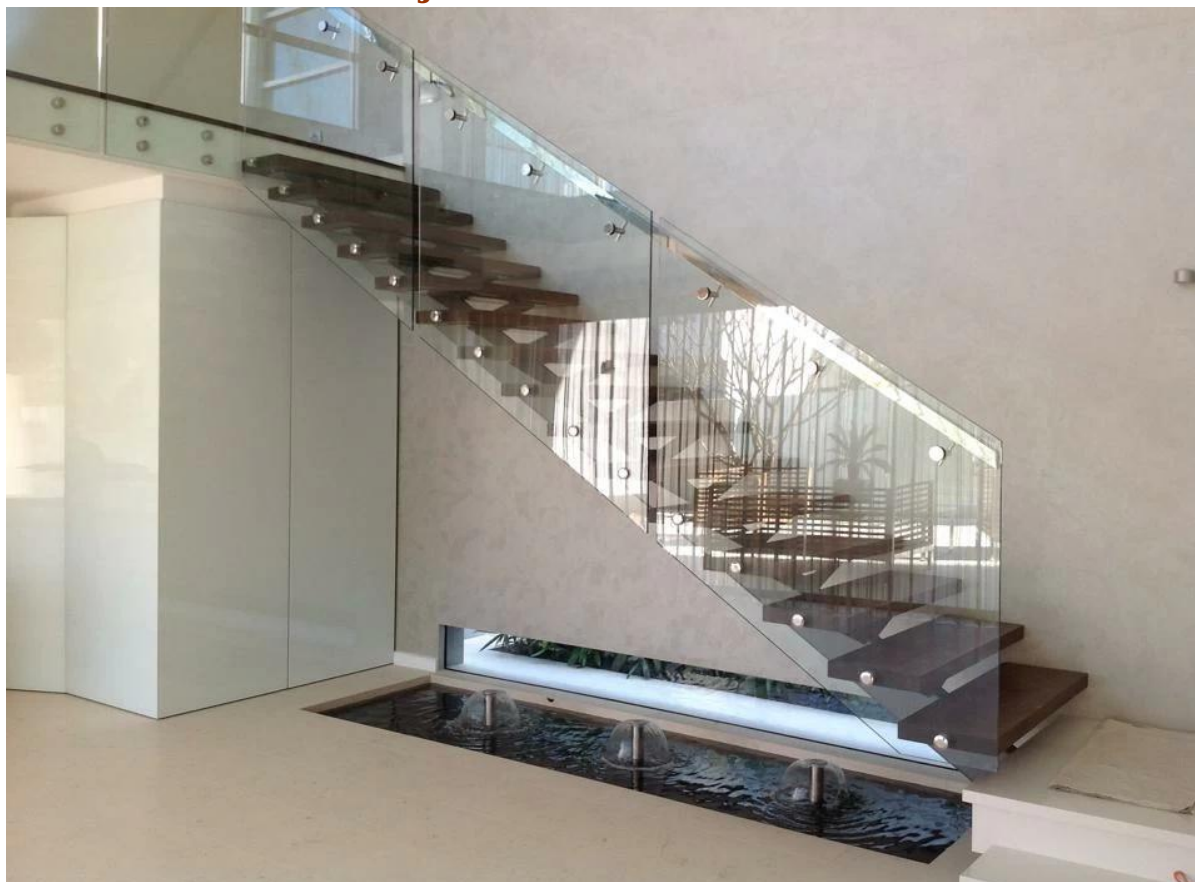


Part No.	size	Material	Finish
LCH-213/43	43 22 40 12	• AISI 304 • AISI 316	• Satin • Mirror
LCH-213/50.8	50.8 25 47.8 12		



Part No.	size	Material	Finish
LCH-214/43	43 6 40 12	• AISI 304 • AISI 316	• Satin • Mirror
LCH-214/50.8	50.8 10 47.8 12		

Handrail Bracket Project





Handrail Bracket Packaging

1. Bubble bag - cardboard box - carton
2. Or packing as customers' requirements.





FAQ

1.Are you factory?

Yes, we are factory.

2.Do you offer free samples?

Yes, we offer free samples, but customers need to pay express charges.

3.What materials do you have?

We have the material of stainless steel 304, 316, 316L and Duplex 2205.

4.What is your MOQ?

MOQ of order required is 1 pc.

5.What kind of payment do you accept?

We accept the payment of T/T, LC, PayPal, West Union, etc.

6.What is your payment term?

Our payment term is T/T 100% or 30/70 or L/C at sight .

7.What is your delivery time?

Our delivery time is from 5 days to 30 days based on your quantity.

8.Do you offer OEM & ODM service?

Yes we offer OEM&ODM service.

9.Do you offer after-sales service?

Yes, we offer after-sales service. Any complaint for orders will be dealt with in time within 12 hours.

Contact

Any enquiries or questions, please leave a message. Will get back to you as soon as possible!
For any urgent enquiry, please get in touch as below:

-Email: sales04@launch-china.cn
-Tel: (86-755) 8603 7559
-Skype: launch_04
-Mob/whats APP: +86-1353050626
-Wechat: Doris_dp



董 萍 Doris Dong
Senior Sales Representative

☎ (86) 135 3050 6265

深圳市南山区南山大道1092号亿利达大厦B区3栋5003
Room 5003, Building 3, Yilida Building, No.1092
Nanshan Road, Nanshan District, Shenzhen, China
postal code 518054

☎ (86-755) 8603 7559
☎ (86-755) 8637 2611
✉ sales04@launch-china.cn
💻 www.launch-china.com
www.chinabalustrade.com