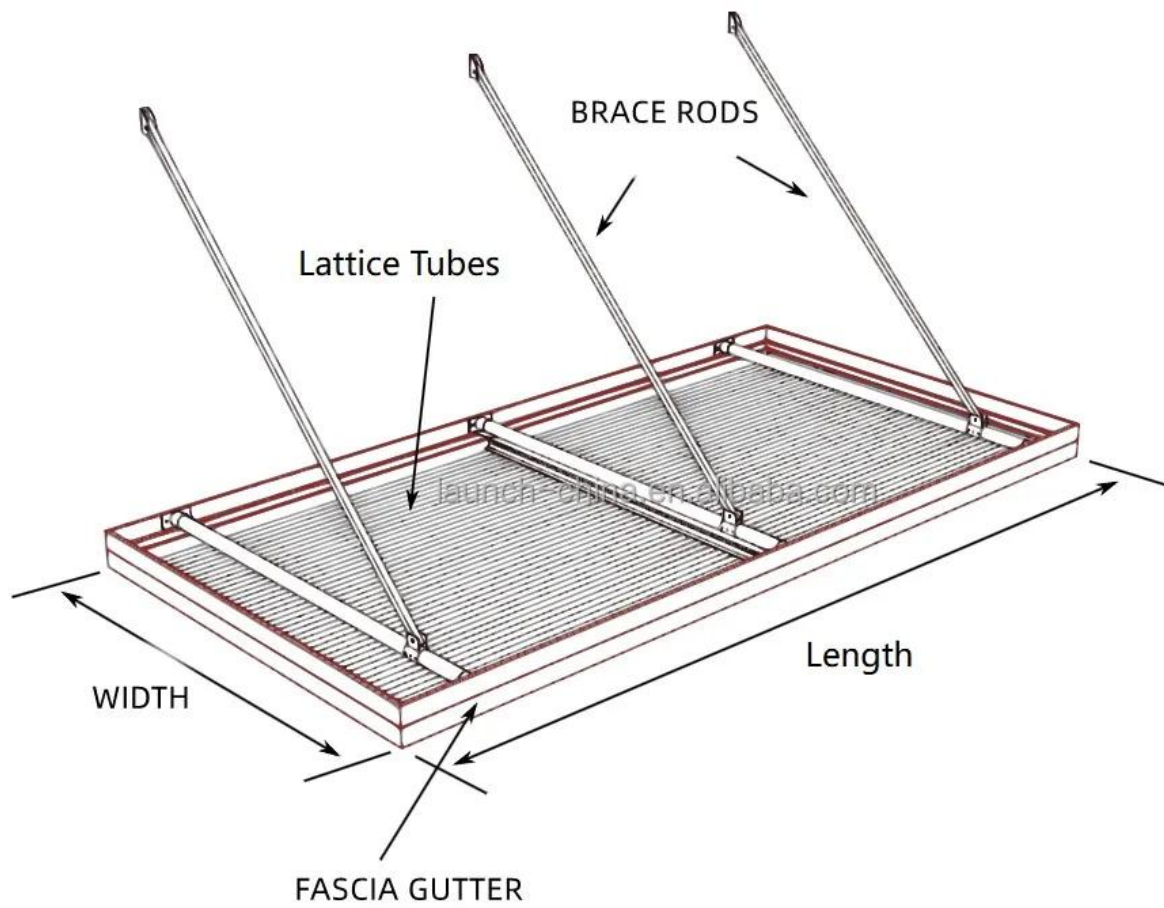


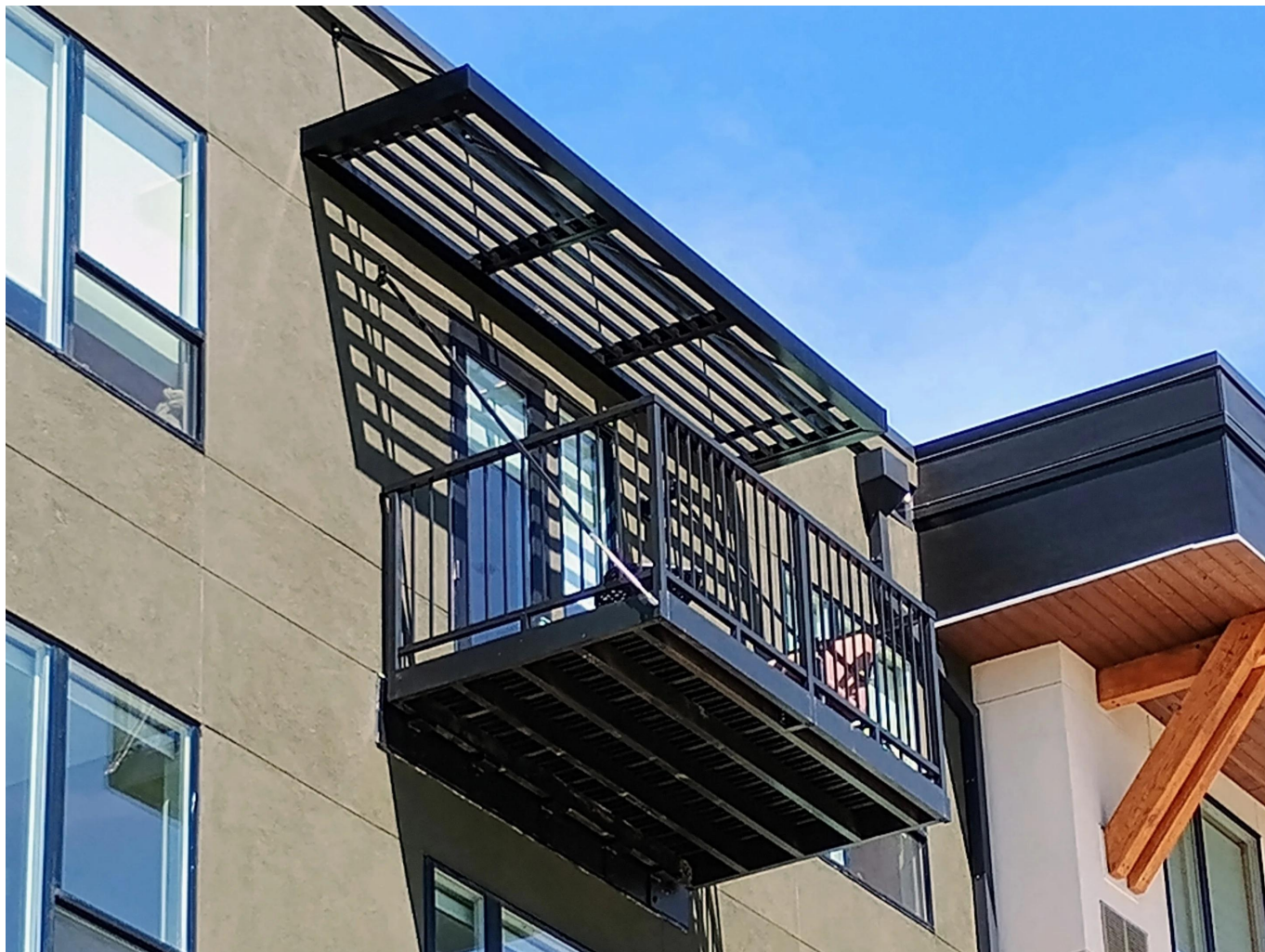
The collage consists of nine images:

- Top left: Close-up of the LED Light Box with horizontal slats, showing the 'LED Light' label and red mounting brackets.
- Top middle: Close-up of the LED Light Box with a grid pattern.
- Top right: Close-up of the LED Light Box with a solid dark finish.
- Middle left: A row of windows on a brick building, each with a black LED Light Box canopy.
- Middle right: A Starbucks storefront with a large glass entrance and a black LED Light Box canopy over the entrance.
- Bottom left: Close-up of the LED Light Box with horizontal slats, showing the mounting brackets.
- Bottom middle: Close-up of the LED Light Box with a grid pattern, showing the mounting brackets.
- Bottom right: A row of windows on a brick building, each with a black LED Light Box canopy.





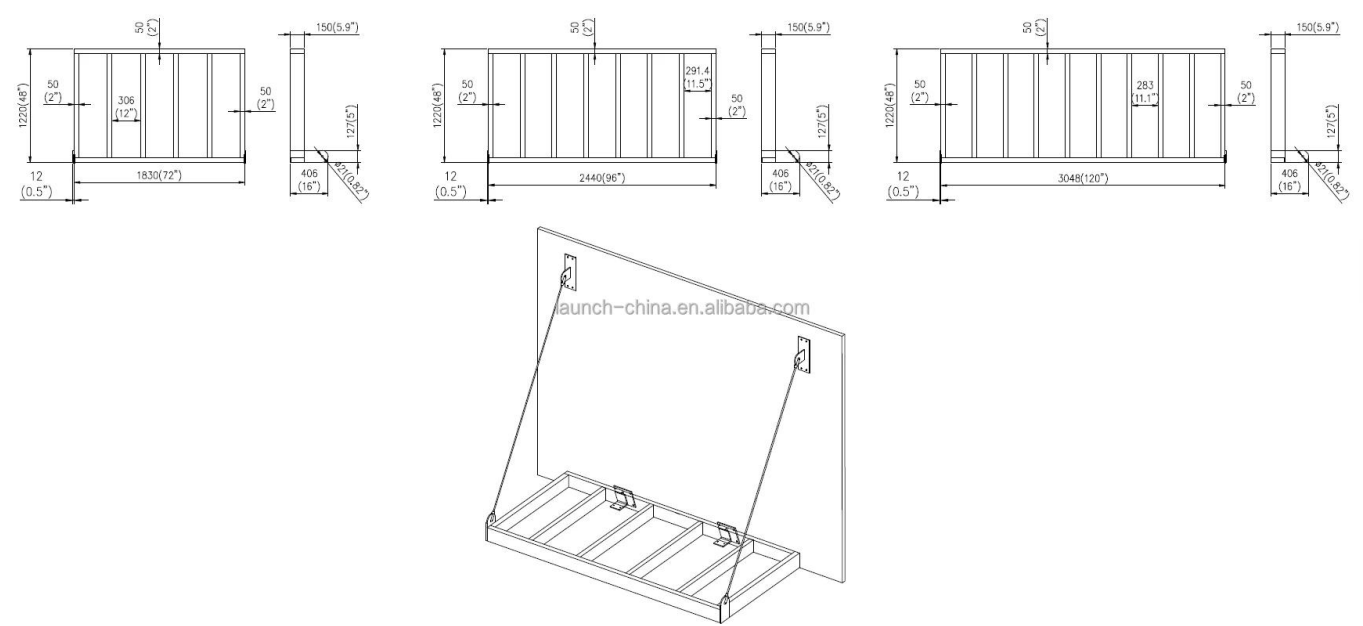








**PRODUCTION SHOP DRAWING REFERENCES FOR ALUMINUM CANOPY-**





**Workshop production photos for aluminum canopy , aluminum balcony fence-**

**Outdoor Aluminum Tube Canopy Aluminum Outdoor Awning for Patio Garage Carports**





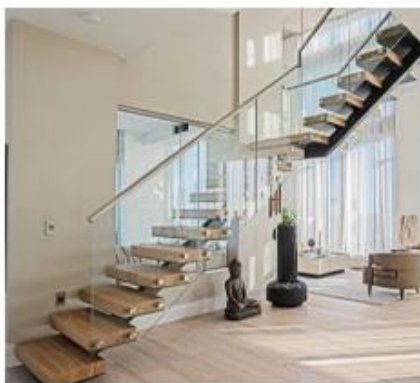








## ☰ RELATED PRODUCTS

[VIEW MORE>>](#)[VIEW MORE>>](#)[VIEW MORE>>](#)[VIEW MORE>>](#)[VIEW MORE>>](#)[VIEW MORE>>](#)

**Construction Machinery Experience**







### **Wide Range of Products**

From stair handrails, balcony railings, to customized stairs, prefabricated balconies to bathrooms - our diverse products are suitable for residential, commercial and industrial projects.



### **Excellent Quality and Craftsmanship**

Each product goes through strict quality control and is manufactured with high-quality materials such as stainless steel, aluminum alloy, tempered glass . We follow international standards (ISO, CE) to ensure the lifespan and performance of the products.



### **Customization and OEM Service**

Our R&D team works closely with customers to provide tailor-made solutions.



### **Competitive Prices and Fast Logistics**

Taking advantage of Shenzhen's strategic location as a manufacturing and export hub, we optimize costs and ensure timely global delivery by sea, air or land.



### **Professional Customer Support**

Our multilingual team provides full assistance from product selection and quotation to after-sales service to ensure a one-stop experience.



**Talk to Our Experts Today >>>>**



# Who we serve?





20  
YEARS

Shenzhen Launch Co., Ltd was founded in 2004, with head-quarter located in Nanshan Shenzhen , and factory located in Tangxia Dongguan . We have over 20 years experience in supplying construction materials and we've established a stable cooperation with more than 500 companies worldwide .

We manufacture not only high quality balustrade hand-rails, customized stairs & prefabricated balconies , but also customized aluminum glass doors & windows and shower enclosures .

Benefit from the strategic location of Shenzhen-a manufacturing and export hub , we are able to optimize production and logistic efficiency for our customers , enabling our customers to reduce cost and save time on hundreds of construction projects .

Do not hesitate to contact us whenever you have any enquiries.



## TEAM AND EXHIBITION

### WORLDWIDE EXHIBITION



## CERTIFICATE





## A. PACKING

We will pack our products tightly to ensure that they are not damaged in transit.



## B. TRANSPORT

We support three transportation: sea, land, and air to ensure that your goods can be delivered on time.

**It sells well in more than 100 countries and regions around the world**



---

**KEBIL** 科比奥® **full models**

**Specific model or P/N** **contact us** directly

