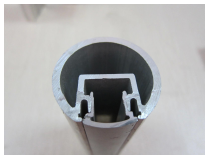
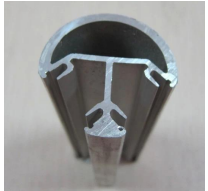

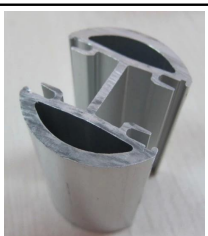



## Description

Certified round aluminum balustrade handrail posts for 10-12mm tempered glass.

Pictures	Item Name	Size	Standard height	Packaging	Application
	round <b>one way</b> aluminum post	diameter 50mm, 3mm thickness, or as per your requirement	1100mm hight, or as per your requirement	plastic bag, cardboard, carton, or as per your requirement	balcony aluminum handrail, deck aluminum glass railing, swimming pool aluminum fence, staircase aluminum railing design
	round <b>2 way 90°</b> aluminum post				
	round <b>2 way 135°</b> post				
	round <b>2 way 180°</b> aluminum post				
	<b>half way</b> aluminum post				

--For both commerical and modern house home aluminum handrail design

--For both wholesale and retail ( we are factory)

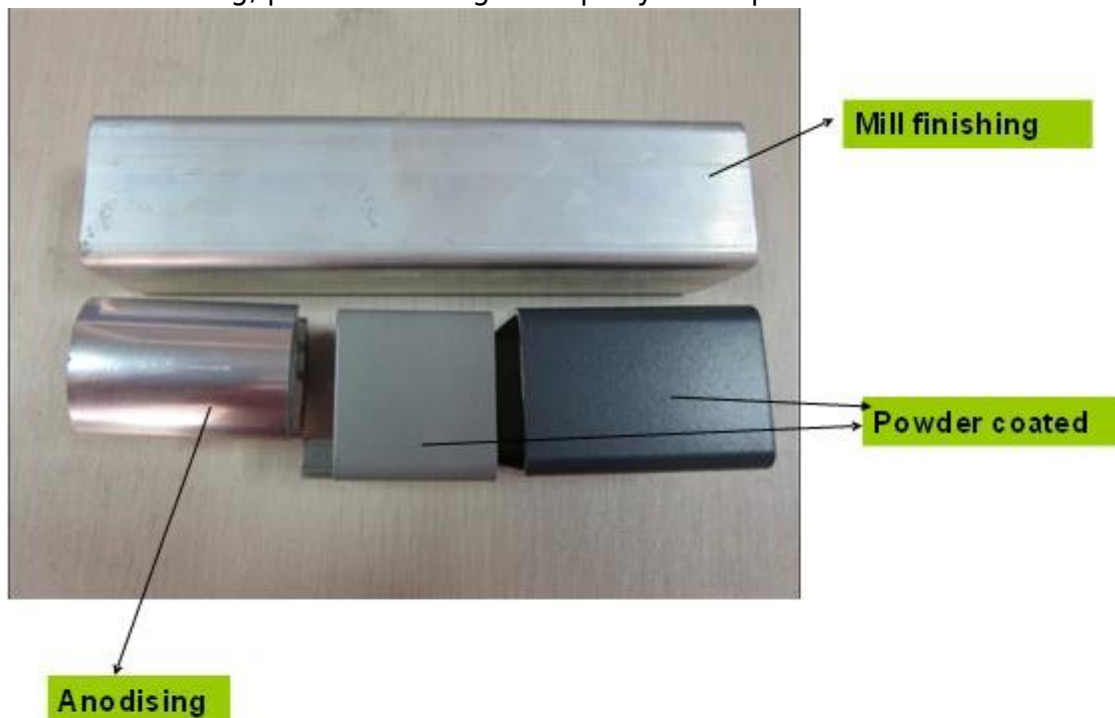
--Sample: always available

## Details

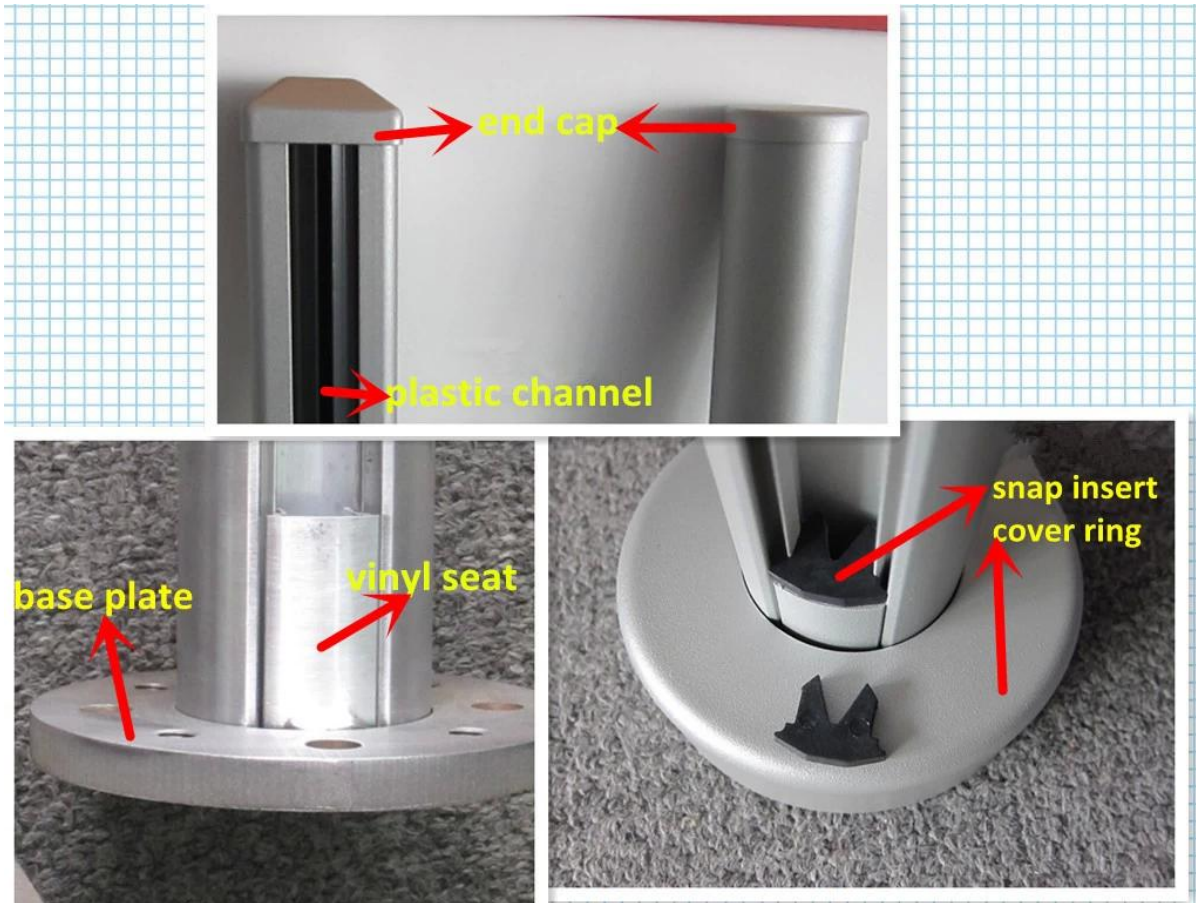
5 types aluminum profiles



Finish: anodizing, powder coating or as per your requirement



Base plate and fittings



## Project

Black powder coating aluminum handrail post for deck glass railing

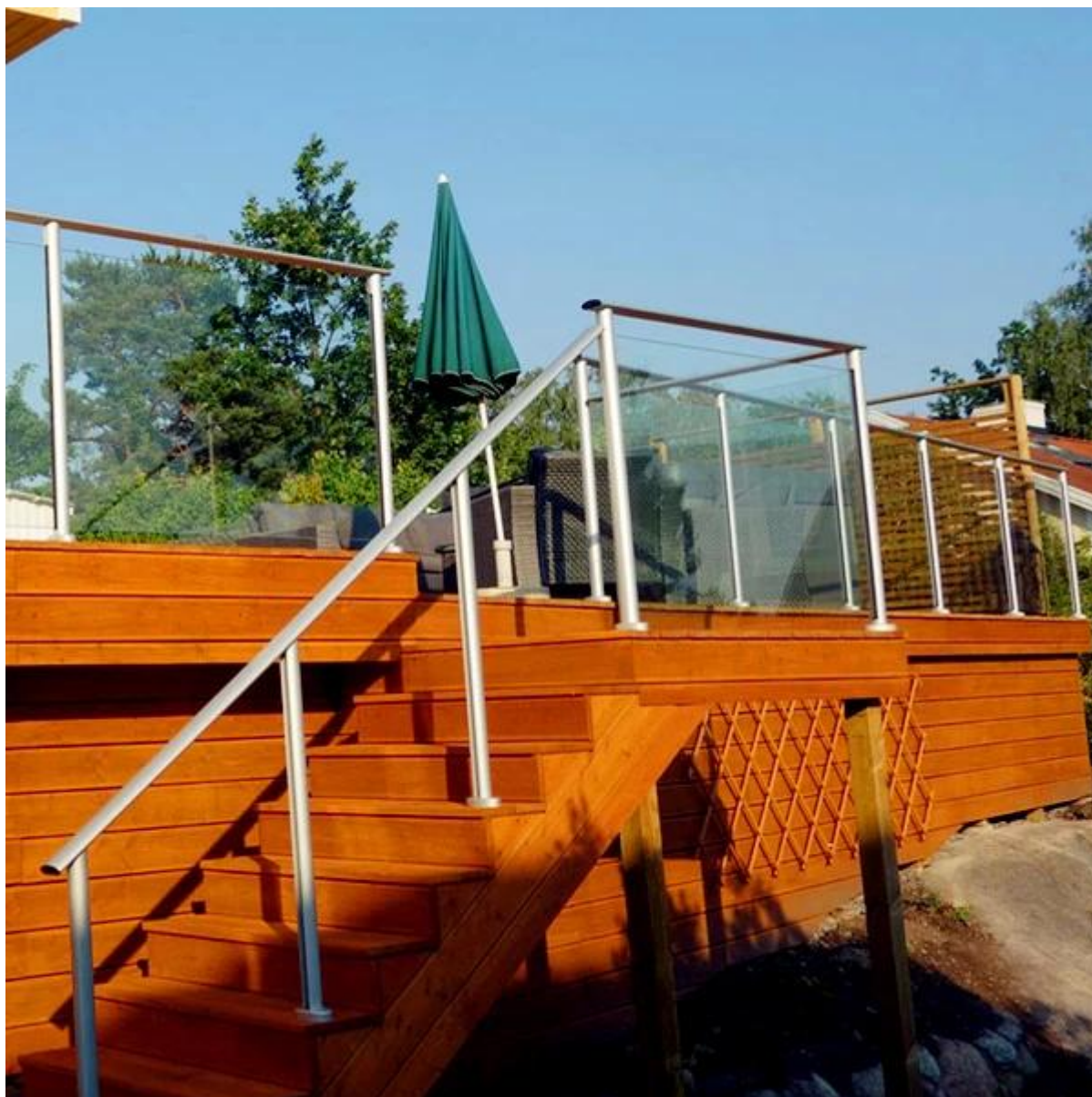




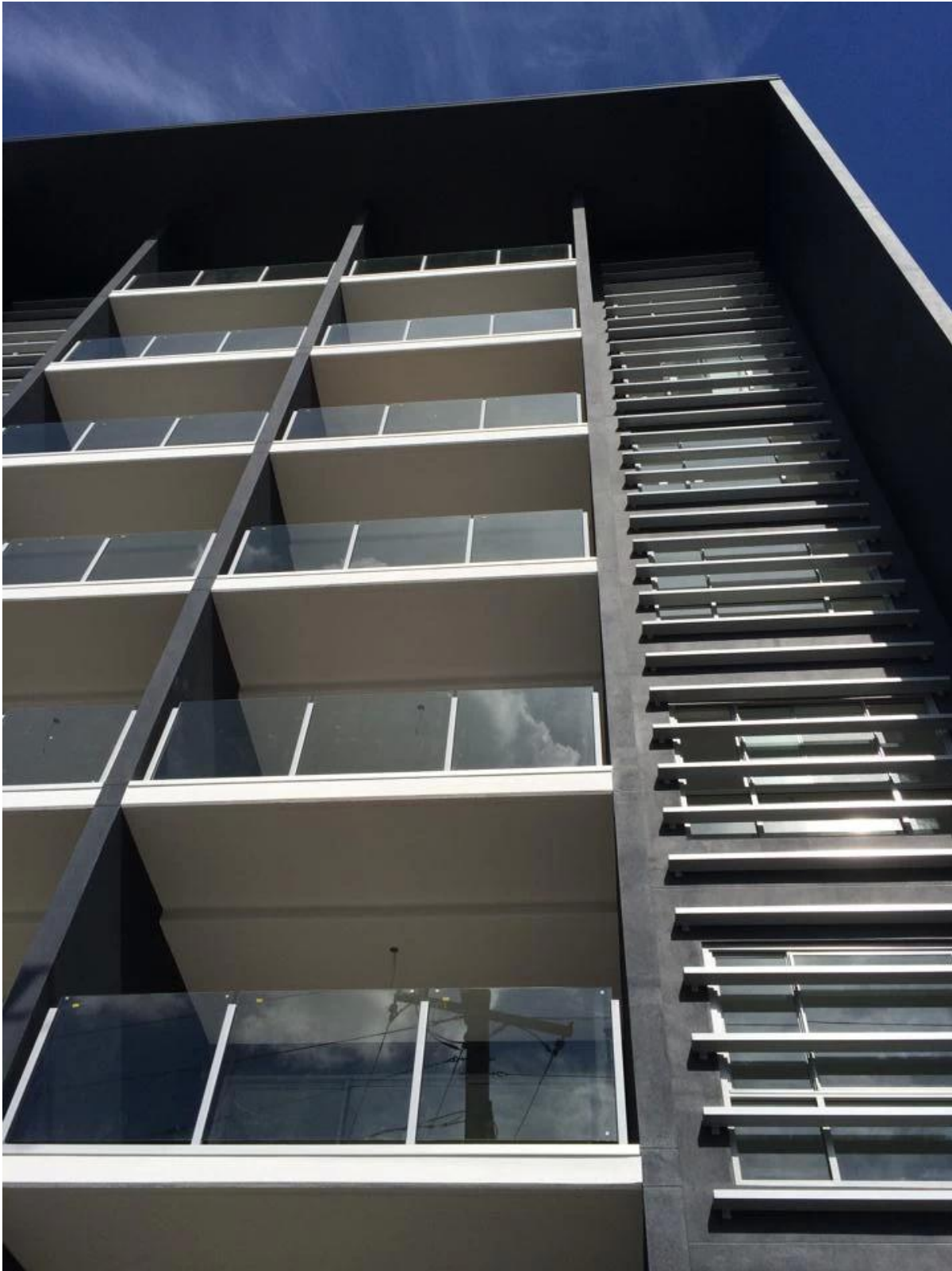
Base plate aluminum handrail post for swimming pool fence



Top rail required aluminum posts for stair case glass railing



Aluminum profile posts for commerical department balcony design



## Packaging & Delivery

--Delivery time: 5-7 days by air, 15-20 days by sea

--Regular lead time: 10-15 days if goods are in stock, 20-25 days if goods are not in stock. It depends on quantity.

--Packaging: plastic bag →cardboard→carton→metal frame





Factory&Certification







## Shenzhen Launch Co.,Ltd



[www.launch-china.cn](http://www.launch-china.cn)

Customer inspection



Need a quote or any questions, please leave a message.

Or contact me as below info. will get back to you as soon as possible!

For any urgent enquiry, please get in touch on wechat: 973219879 or what's up:  
+86-13530506265





深圳市朗驰商贸有限公司  
SHENZHEN LAUNCH CO., LTD.

朗驰国际有限公司  
LAUNCH INTERNATIONAL LIMITED.

**董 萍** Doris Dong

Senior Sales Representative

☎ (86) 135 3050 6265

---

深圳市南山区南山大道1092号亿利达大厦B区3栋5003

Room 5003, Building 3, Yilida Building, No.1092  
Nanshan Road, Nanshan District, Shenzhen, China  
postal code 518054

---

☎ (86-755) 8603 7559

☎ (86-755) 8637 2611

✉ sales04@launch-china.cn

💻 www.launch-china.com

www.chinabalustrade.com