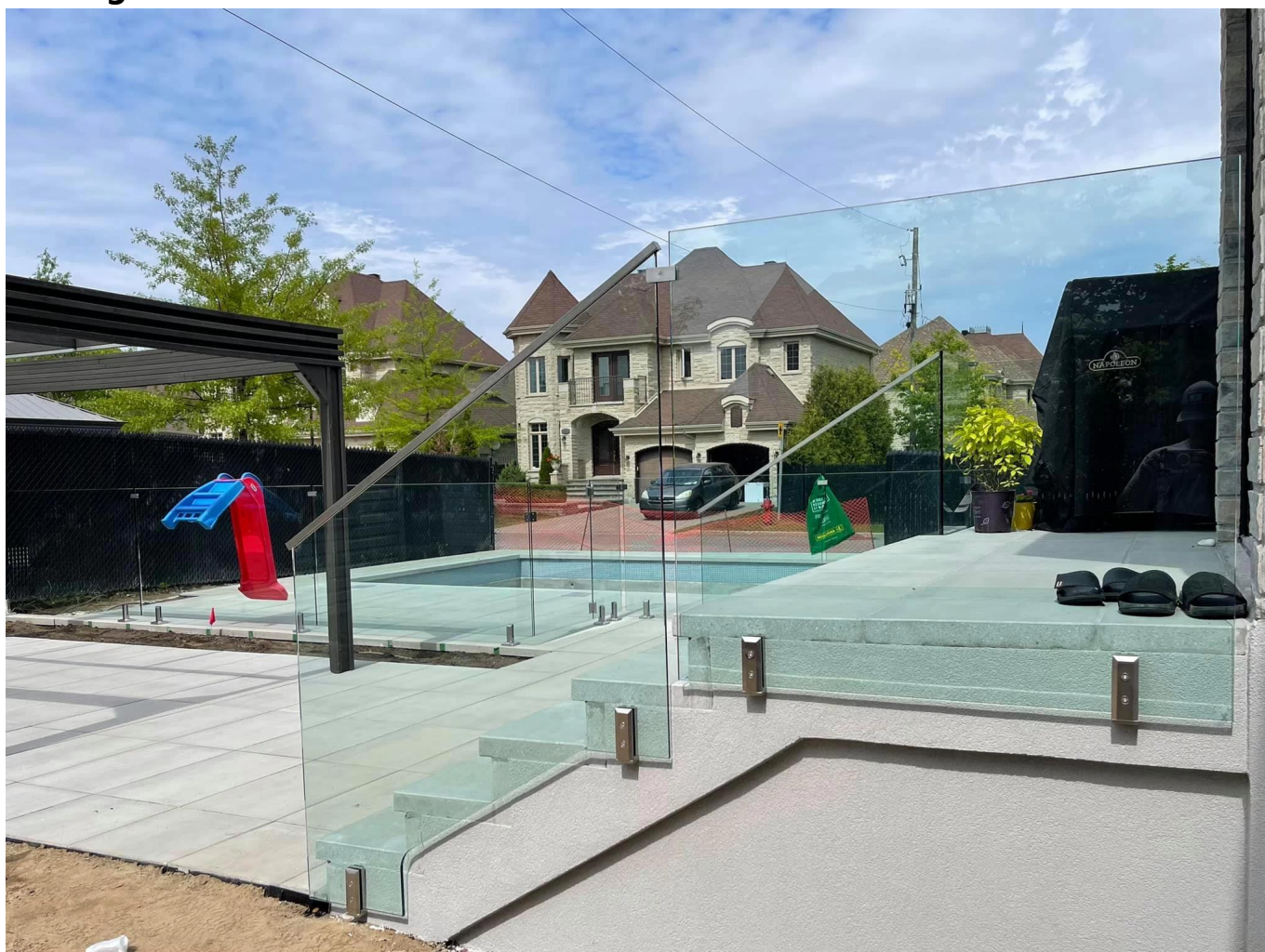


Duplex 2205 Fascia Side Mounted Glass Spigot for Frameless Glass Railings



Product Description

Product Mame	Duplex 2205 Fascia Side Mounted Glass Spigot for Frameless Glass Railings
Material	Stainless steel 316 or duplex 2205
Finish	Mirror polished / satin brushed
For Glass Thickness	8-13.52mm
Height	143mm
Drill glass hole	Diameter 14mm hole required in glass
Payment Term	PayPal, West Union, T/T
Manufacture Method	CNC machining (high quality)
Packaging Details	1) One piece into one bubble bag, then into one white box 2) 12 pieces into one cardboard carton Or packing as customers' requirements
Application	Balcony glass railing, staircase railing, deck railing design, swimming pool fence, balustrade frameless glass railing

Factory Inspection	Welcome
Sample	Available before order
Mount	Fascia mounting, side mounting glass spigot fixing into concrete or timber
MOQ	No limited. You can order as per your job requirement.
OEM & ODM Service	Available

Side Mounting Glass Spigot Destails

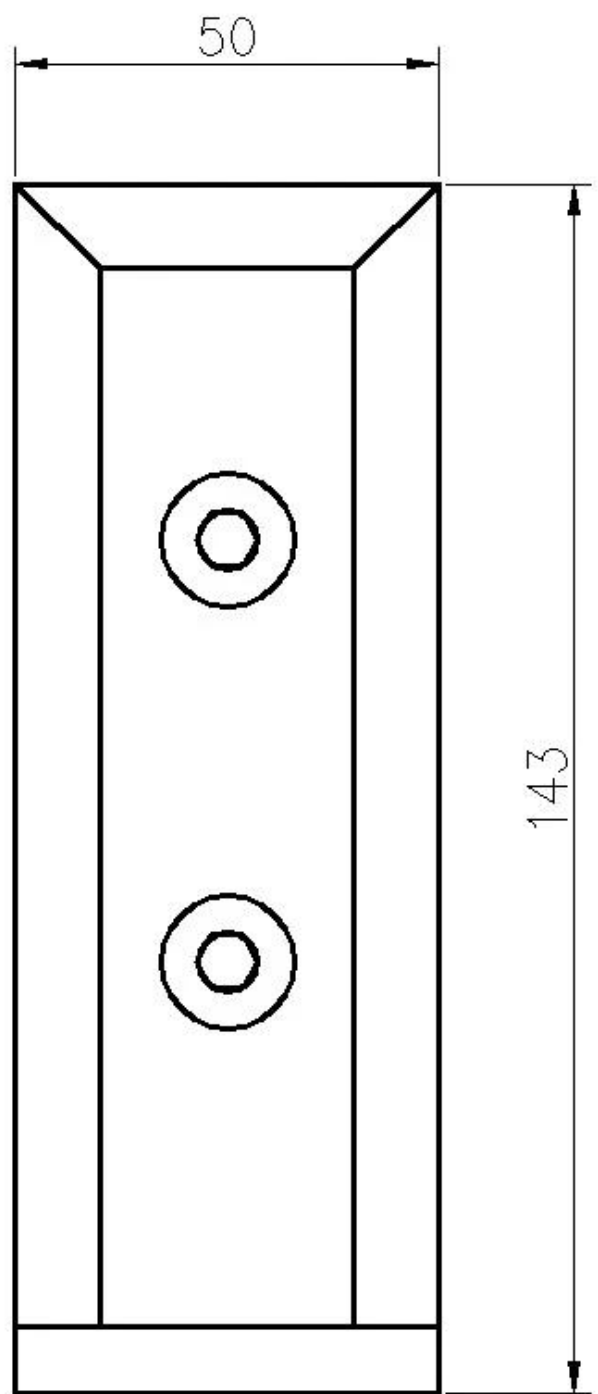
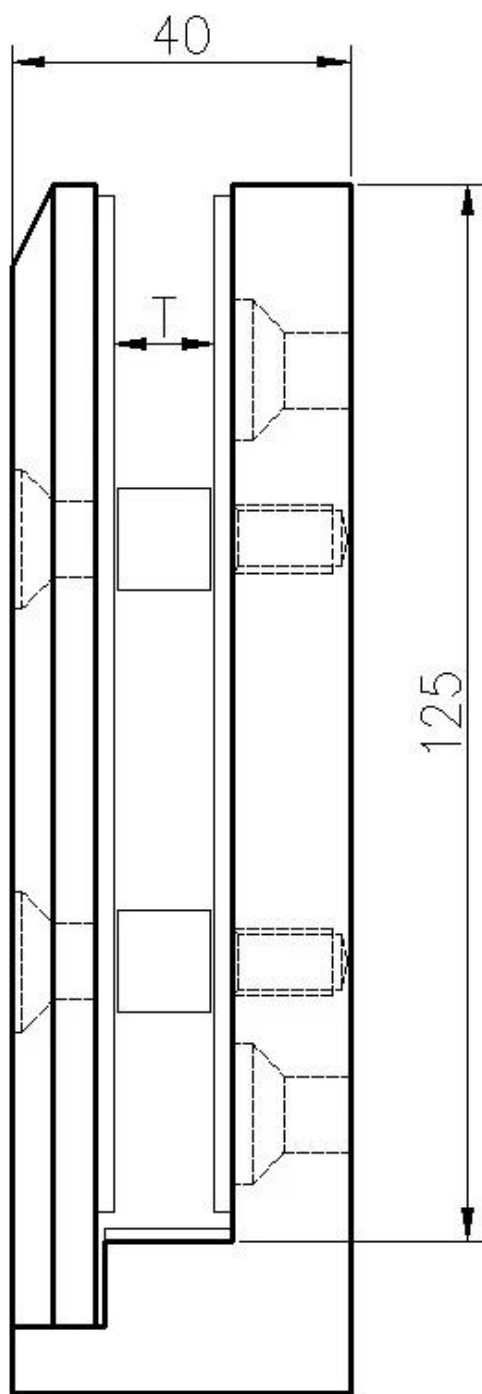
1) Side mounting glass spigot real shot photos







2) Side mounting glass spigot size



3) Side mounting glass spigot installation



With the front face plate removed, level or align the Clamps to your design plan, taking into account the spacing recommendations and weight limitations shown on the back of this page. Be sure to secure the Clamps to an engineered and approved substrate with appropriate fasteners. You can fabricate the glass ahead of time, however, we recommend calculating hole locations after the Clamps are installed to account for any clamp movement.



Check the layout of the Clamps for alignment, then do a layout for fabricating holes in the glass to meet the installed measurements and spacing between glass panels.



Place the gaskets against the base fitting, both back and bottom lip, then set the glass panel on the base fitting. Next place the front gasket against the glass panel along with the front plate and secure to the base fitting by tightening the two screws. Don't tighten all the way, leave enough play to adjust the glass panel.



After you have achieved the proper alignment tightly secure the front plate screws to finish the installation. Clean the glass and view from a distance to determine if everything matches up and looks good. Adjust if necessary.

4) Side mounting glass spigot project



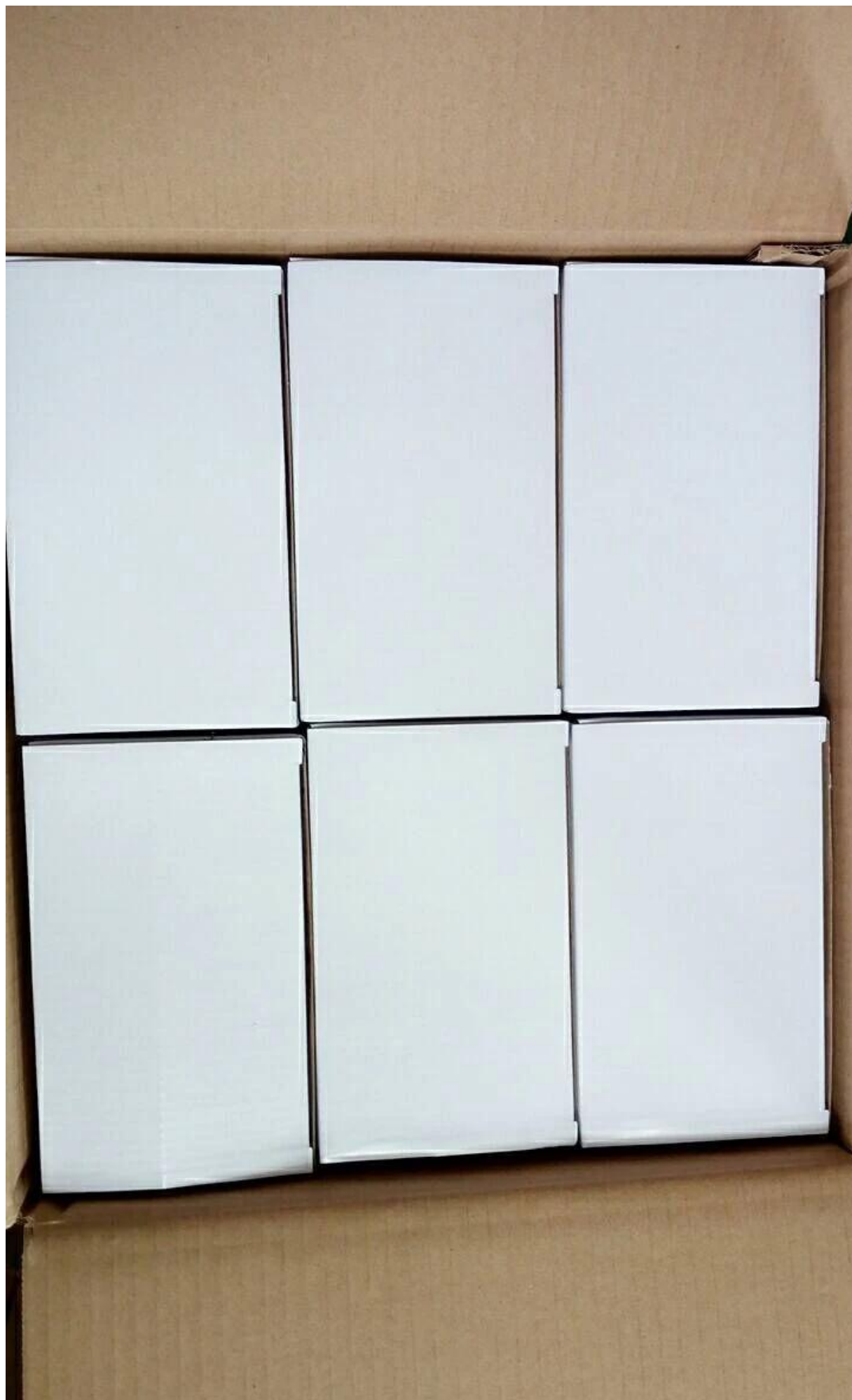


Side Mounting Glass Spigot Safety Packaging

1. One piece into one bubble bag, then into one white box.
12 pieces into one cardboard carton.

2. Packing as customers' requirements.





FAQ

1.Are you factory?

Yes, we are factory.

2.Do you offer free samples?

Yes, we offer free samples, but customers need to pay express charges.

3.What materials do you have?

We have the material of stainless steel 304, 316, 316L and Duplex 2205.

4.What is your MOQ?

MOQ of order required is 1 pc.

5.What kind of payment do you accept?

We accept the payment of T/T, LC, PayPal, West Union, etc.

6.What is your payment term?

Our payment term is T/T 100% or 30/70 or L/C at sight .

7.What is your delivery time?

Our delivery time is from 5 days to 30 days based on your quantity.

8.Do you offer OEM & ODM service?

Yes we offer OEM&ODM service.

9.Do you offer after-sales service?

Yes, we offer after-sales service. Any complaint for orders will be dealt with in time within 12 hours.

Contact

Any enquiries or questions, please leave a message. Will get back to you as soon as possible!

For any urgent enquiry, please get in touch below:

-Email: sales04@launch-china.cn

-Tel: (86-755) 8603 7559

-Skype: launch_04

-Mob/whats APP: +86-15989339827