

Duplex 2205 Stainless Steel Core Drill Glass Spigot For Frameless Glass Railing



1) Main features of core drill in ground glass spigot

- Need drill holes in the ground for fixing
- For 10-13.52mm thickness glass panels
- With decorative cover ring
- Duplex 2205 or stainless steel material
- Satin /mirror /black finish
- Extra length available by welding
- 2 pcs for a glass panel within 1.2m wide
- MOQ 10 pcs

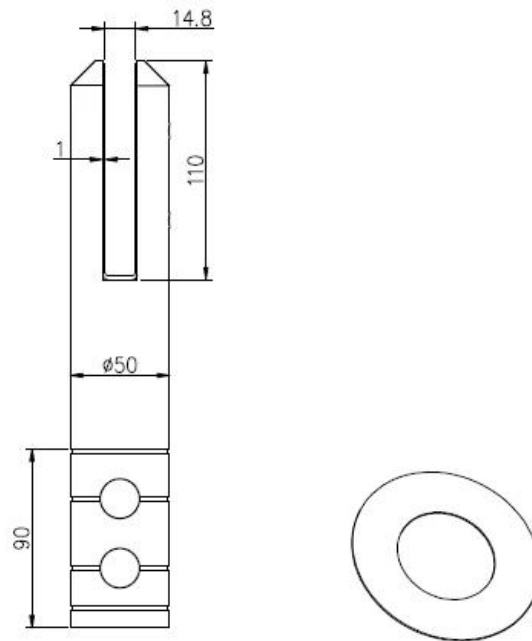
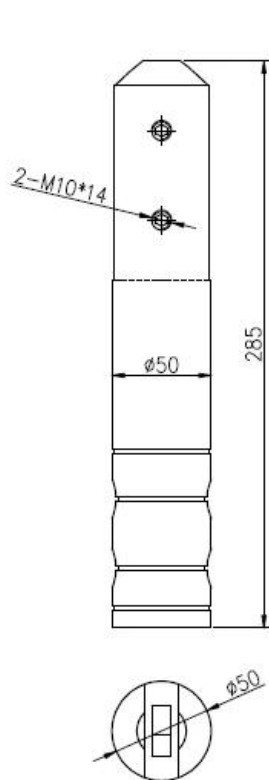
2) RCM core drill glass spigot photo







3) RCM core drill glass spigot drawing



深圳市朗驰商贸有限公司 SHENZHEN LAUNCH CO., LTD.			表面处理		比例
设计	裴佳辉	图号:RCM	材料	2205	1:2.5
校对		名称:RCMapigot	未注实体尺寸公差		
工艺			线性公差	X	±0.1
审核				XX	±0.1
批准			角度公差	XXX	±0.1
		版次		X	±1°
		V001		XX	±0.5°

4) Packing photos for RCM





5) We have more models of glass spigots for your selection

Glass spigot



MODEL # SBM



MODEL # SCM



MODEL # RBM



MODEL # RCM

* Project photos of glass spigot swimming pool fence-



1.Are you factory?

Yes, we are factory.

2.Do you offer free samples?

Yes, we offer free samples, but customers need to pay express charges.

3.What materials do you have?

We have the material of stainless steel 304, 316, 316L and Duplex 2205.

4.What is your MOQ?

MOQ of order required is 1 pc.

5.What kind of payment do you accept?

We accept the payment of T/T, LC, PayPal, West Union, etc.

6.What is your payment term?

Our payment term is T/T 100% or 30/70 or L/C at sight .

7.What is your delivery time?

Our delivery time is from 5 days to 30 days based on your quantity.

8.Do you offer OEM & ODM service?

Yes we offer OEM&ODM service.

9.Do you offer after-sales service?

Yes, we offer after-sales service. Any complaint for orders will be dealt with in time within 12 hours.

Contact

Any enquiries or questions, please leave a message. Will get back to you as soon as possible!

For any urgent enquiry, please get in touch below:

-Email: sales04@launch-china.cn

-Tel: (86-755) 8603 7559

-Skype: launch_04

-Mob/whats APP: +86-15989339827