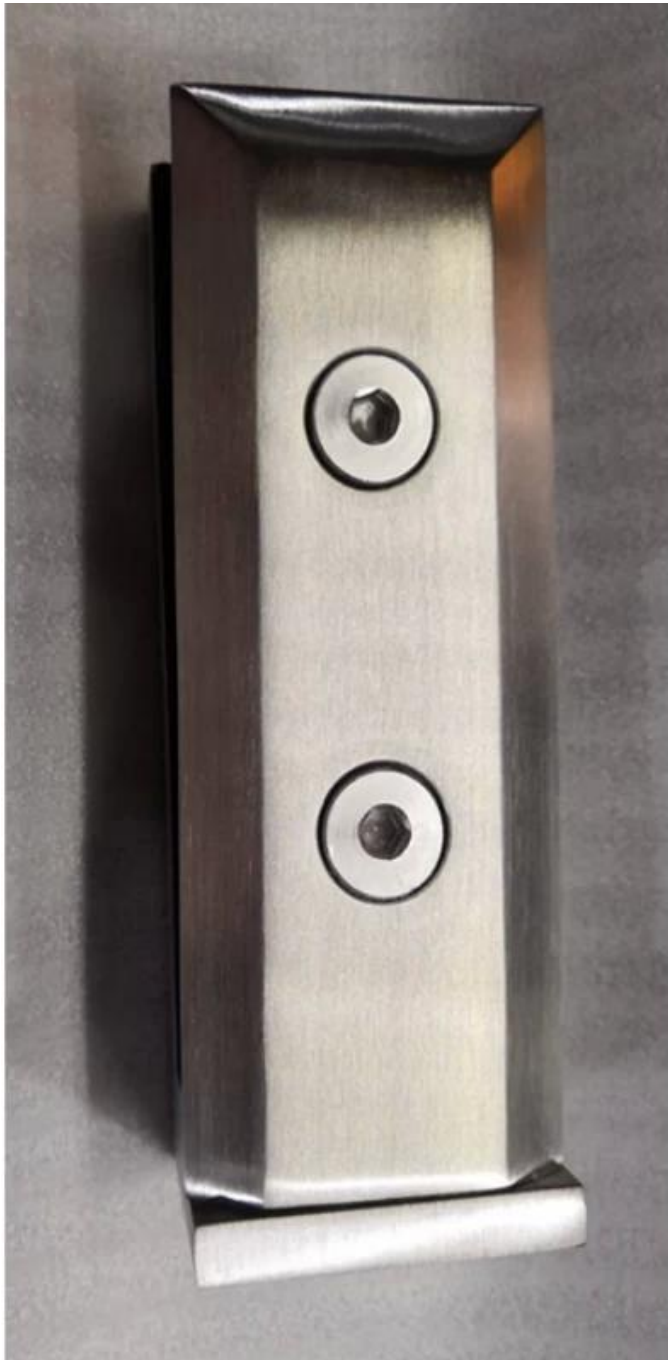


## Product show

The glass panel is drilled two holes on the bottom to connect with this glass spigot.

Screws connect with concrete or wood will be offered together.

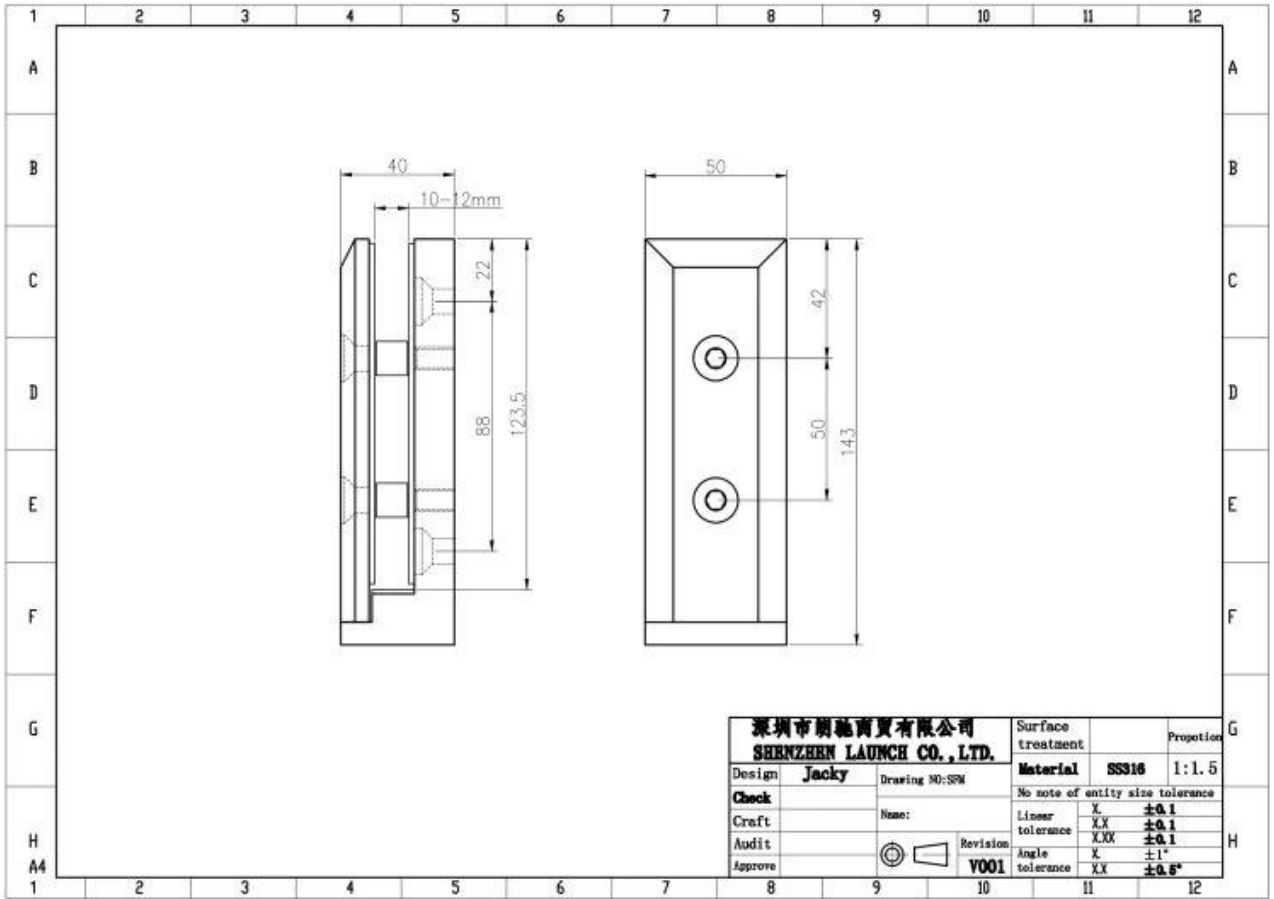
Samples are available for your test.







**Technical drawing**



**Mass production**





**Application photo**

Normally used for balcony, deck, terrace frameless glass railing







Should you are interested in them, please feel free to contact me.

Frank Fang, [sales02@launch-china.cn](mailto:sales02@launch-china.cn)

Phone/WhatsApp: +8615906261741