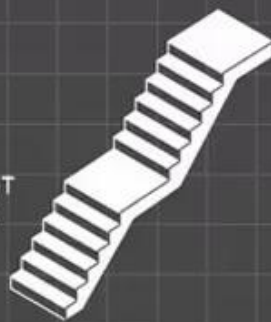


Product Name		Easy-to-Install DIY Floating Staircase Kit Durable Metal & Iron Wooden Glass Steps for Villas & Apartments Homeowners
Staircase Specifications		
Size	Floor Height	Customized as your project
	Width	700-1500mm
Material	Tread	Laminated glass /Tempered glass /Solid wood /Marble /Stainless steel /Wrought iron
	Railing	Glass Railing/Stainless steel cable railing/Stainless steel rod railing/wrought iron railing
Components & Sizes		30 to 100mm solid wood tread
	Tread Thickness	10+1.52+10+1.52+10mm or 12+1.52+12mm tempered laminated glass tread
	Handrail	Dia=50.8mm or square=50*50mm
	Baluster	Dia=50.8mm or square=50*50mm
	Glass	12-17.52mm Thickness
Finish	Stainless Steel	Mirror / satin / black
	Carbon Steel	Hot dip galvanizing / powder coating / painting
	Aluminum	Powder coating / galvanized / oxidize
	Solid Wood	Painting
	Glass	Clear / frosted/ tinted

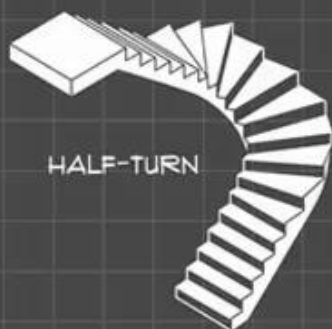
▼ Popular Design



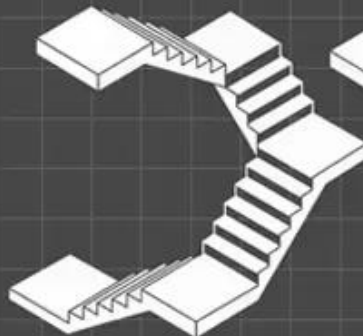
STRAIGHT
STAIRS



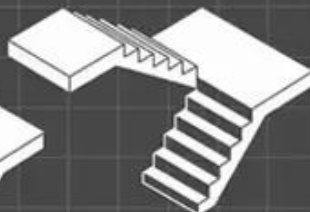
QUARTER-TURN
(L-SHAPE)



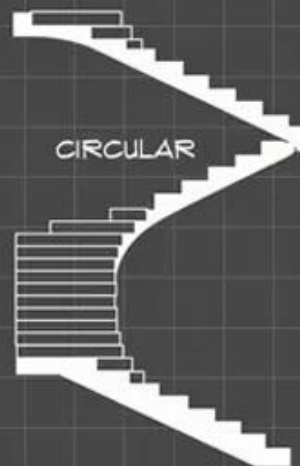
HALF-TURN



THREE-QUARTER
TURN



180 DEGREE
TURN
(SWITCHBACK)



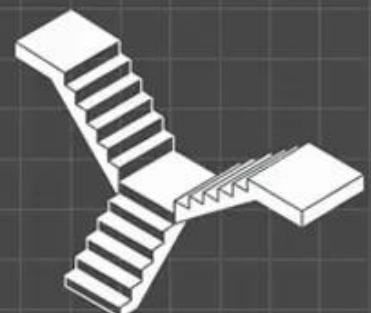
CIRCULAR



SPIRAL



WINDING



BIFURCATED

Stringer Options



floating beams



mono stringer



plate-stringer



Z-plate stringer

Tread options



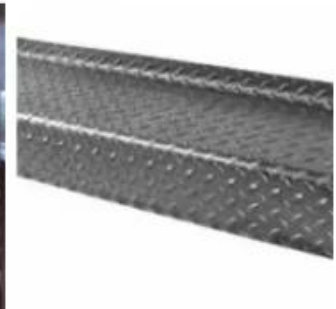
wood tread



glass tread



marble tread

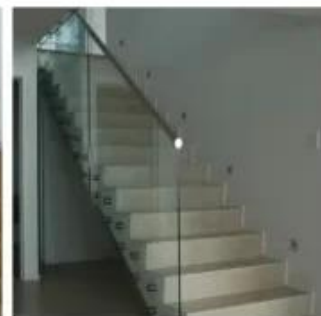


steel tread

Railing Options



U channel glass railing



standoff glass railing



rod railing



cable railing

Top-handrail options



wood



stainless steel



stainless steel

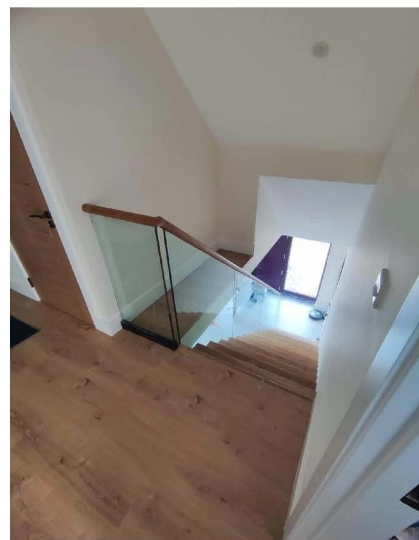
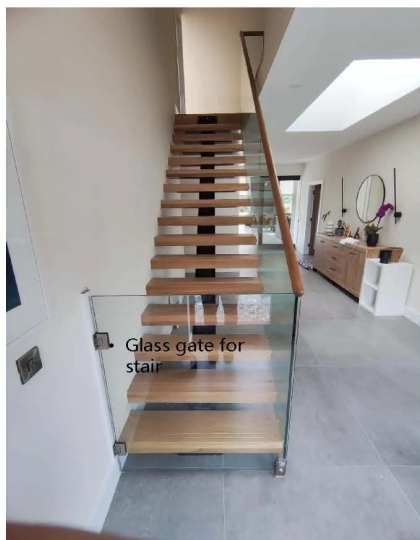


pvc



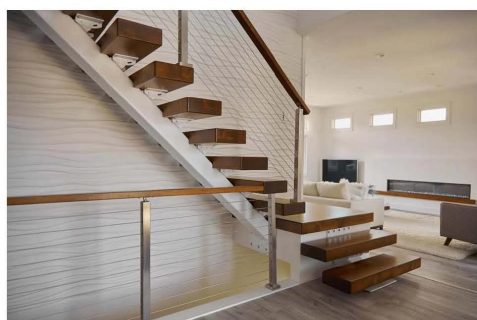
单龙骨楼梯 Mono Stringer stairs • Ireland stair

玻璃护栏 Glass railing



单龙骨楼梯 Single Stringer stairs

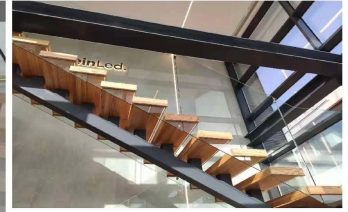
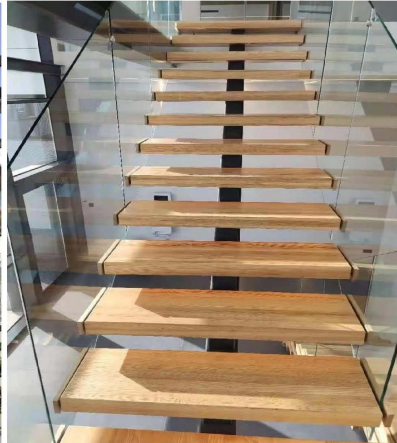
不锈钢拉杆木扶手 Stainless steel rod wooden handrail





单龙骨楼梯 Single Stringer U shape stairs for Spain client

玻璃护栏 Glass handrail 镜钉护栏 Standoff glass railing with wood cover

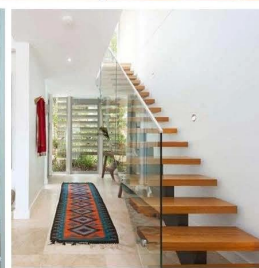


单龙骨楼梯 Single Stringer stairs

玻璃护栏 Glass handrail 镜钉护栏 Standoff glass handrail

侧装不锈钢圆管扶手

Side-mounted stainless steel round tube handrail





☰ RELATED PRODUCTS



[VIEW MORE>>](#)



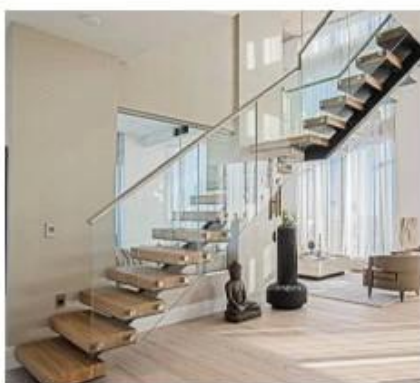
[VIEW MORE>>](#)



[VIEW MORE>>](#)



[VIEW MORE>>](#)



[VIEW MORE>>](#)



[VIEW MORE>>](#)

Who we serve?





Wide Range of Products

From stair handrails, balcony railings, to customized stairs, prefabricated balconies to bathrooms - our diverse products are suitable for residential, commercial and industrial projects.



Excellent Quality and Craftsmanship

Each product goes through strict quality control and is manufactured with high-quality materials such as stainless steel, aluminum alloy, tempered glass . We follow international standards (ISO, CE) to ensure the lifespan and performance of the products.



Customization and OEM Service

Our R&D team works closely with customers to provide tailor-made solutions.



Competitive Prices and Fast Logistics

Taking advantage of Shenzhen's strategic location as a manufacturing and export hub, we optimize costs and ensure timely global delivery by sea, air or land.



Professional Customer Support

Our multilingual team provides full assistance from product selection and quotation to after-sales service to ensure a one-stop experience.



Talk to Our Experts Today >>>>



TEAM AND EXHIBITION

WORLDWIDE EXHIBITION



CERTIFICATE



20
YEARS

Shenzhen Launch Co., Ltd was founded in 2004, with head-quarter located in Nanshan Shenzhen , and factory located in Tangxia Dongguan . We have over 20 years experience in supplying construction materials and we've established a stable cooperation with more than 500 companies worldwide .

We manufacture not only high quality balustrade hand-rails, customized stairs & prefabricated balconies , but also customized aluminum glass doors & windows and shower enclosures .

Benefit from the strategic location of Shenzhen-a manufacturing and export hub , we are able to optimize production and logistic efficiency for our customers , enabling our customers to reduce cost and save time on hundreds of construction projects .

Do not hesitate to contact us whenever you have any enquiries.



Contact us now for more details:

Email: sales03@launch-china.cn

HP/WhatsApp: +8613686807796