

FACTORY Price Direct Sale Outdoor 2-3 Steps Fits Black Wrought Iron Handrail Kit Stair Railing balustrades & handrails

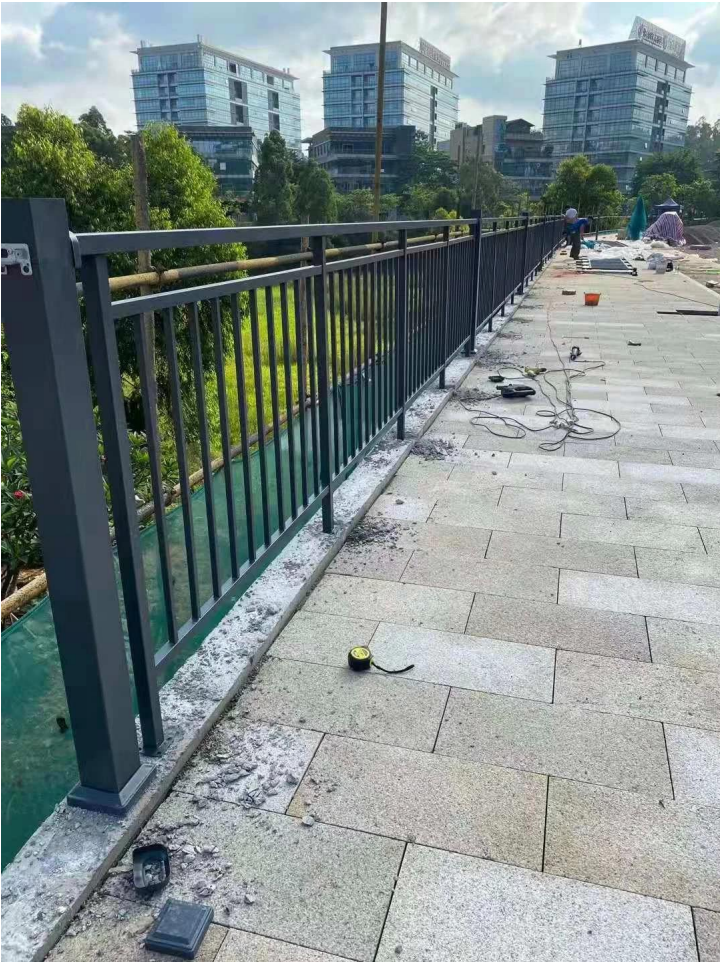
Product Name	Galvanized steel railing	Regular size	H 1.1 M*W 1.2 M
Limit high	2 M	Tube thickness	1.2-2.5 mm
Starting batch	20 m or 20□	Place of Product	Guangdong Province,China
Material	Steel	Unit price calculation method	Height below 1.2 m in meters, Height above 1.2 m in square
Craft	assembled and welded	Surface treatment	Powder coated











Assembly:



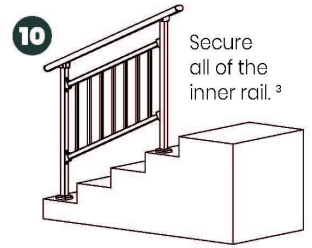
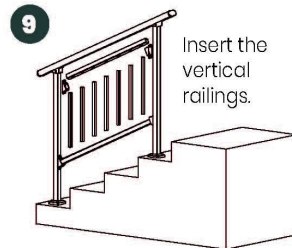
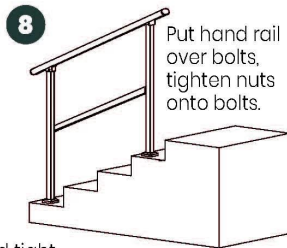
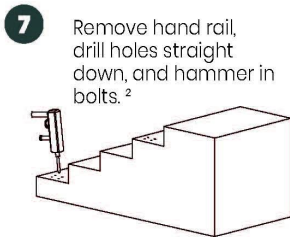
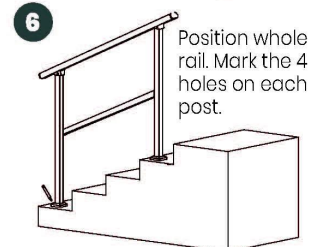
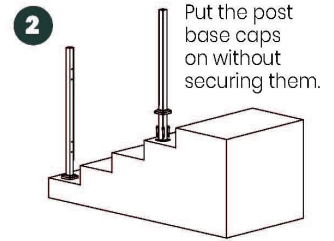
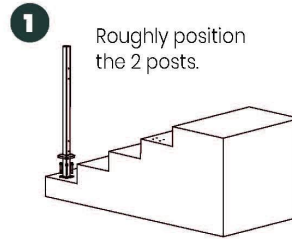
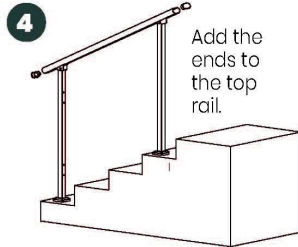
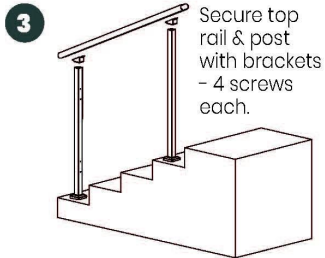


Installation guides:

Guard Rail Assembly Instructions

Tools Required: Electrical Power Drill
(Impact Drill Preferred)

Overview: Assemble the rail and position it before marking holes for drilling. Improper installation can lead to failure of rail system or injury.



² Double check posts are parallel and tight against inside rail before marking holes for drilling.

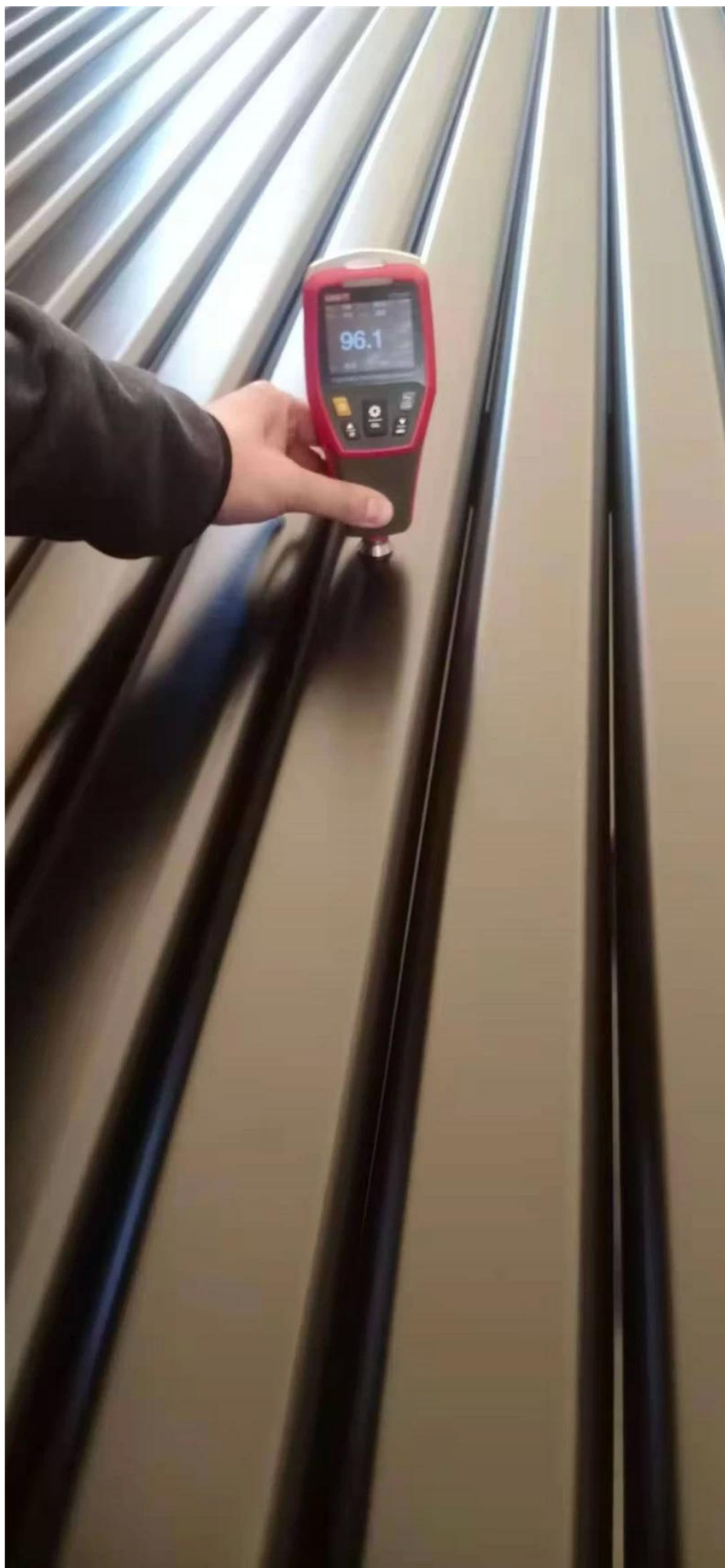
¹ Inside rail will be loose until each post is secured to the ground.

³ Push and pull top rail & inside rail to ensure all is secure.

Production & packaging of staircase steel handrails at our workshop

:









Please feel free to contact us for more details:

Contact: Wendy

Email: sales04@launch-china.cn

HP/WhatsApp: +86159 8933 9827