



LCH-209



LCH-211



LCH-213



LCH-214



LCH-215

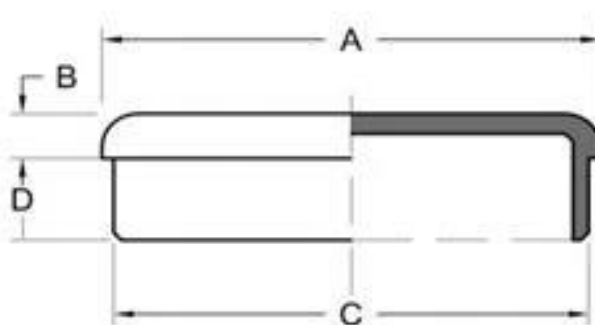
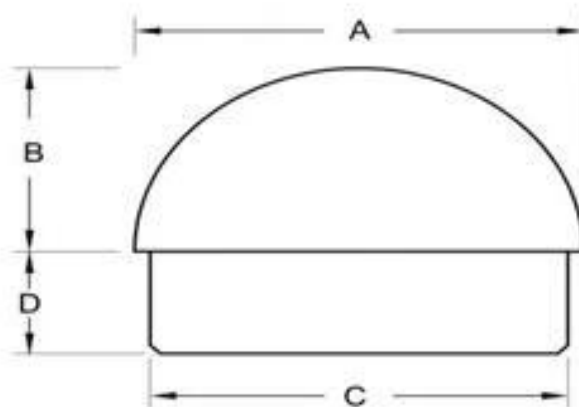
3.Project show

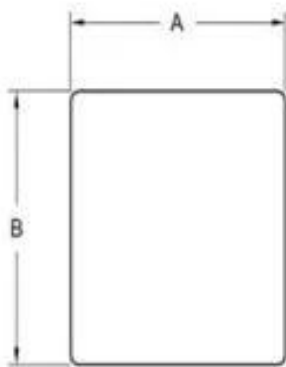
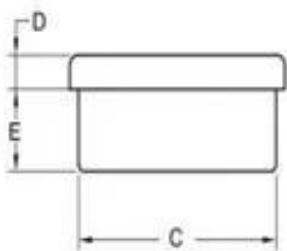






3.Details





+













4.Delivery & Packing

- Delivery: 3-5 days by express. 10-15 days by shipping
- Packing: one pc into one plastic bag. 20 pcs into one box.
- Lead time: about 20 days after payment. (It depent on quantity)





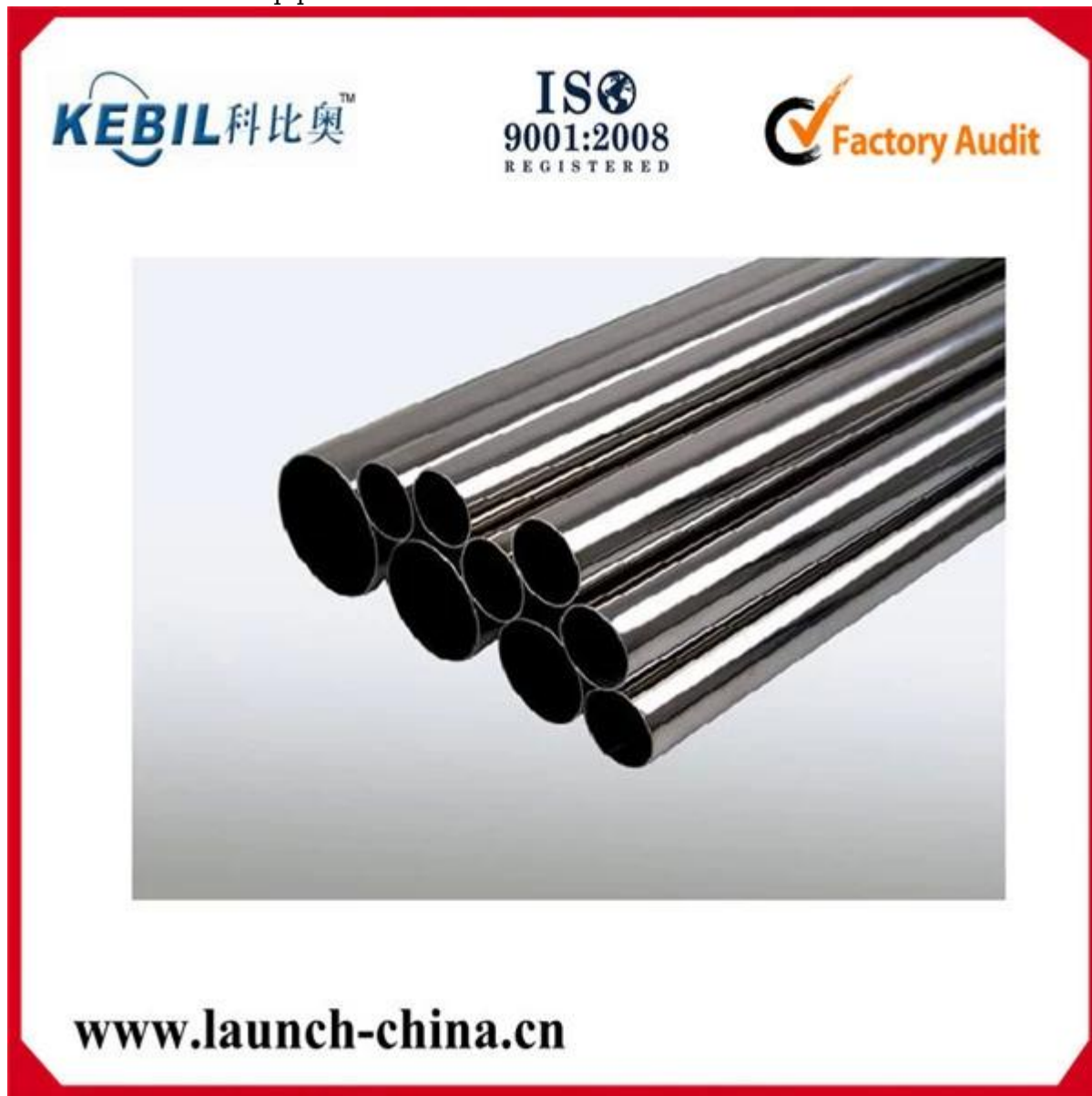
packing	plastic bag+box+carton	
production lead time	30-45 days ; also depending on your qty.	
Shippment	 	
	 	
	 	
payment	 	

5.Associated Products

Balustrade stainless steel pipe and [post](#)

Aluminum end cap is available as well.

Round stainless steel pipe



The advertisement features a central image of several round stainless steel pipes arranged in a fanned-out, overlapping manner, showing their reflective surfaces and circular ends. The pipes are set against a light blue gradient background. Above the pipes, there are three logos: on the left, the 'KEBIL' logo with the Chinese characters '科比奥' and a trademark symbol; in the center, the 'ISO 9001:2008 REGISTERED' certification logo; and on the right, the 'Factory Audit' logo with a checkmark icon. Below the pipes, the website address 'www.launch-china.cn' is displayed in a bold, black, sans-serif font. The entire advertisement is enclosed within a red border with decorative corner elements.

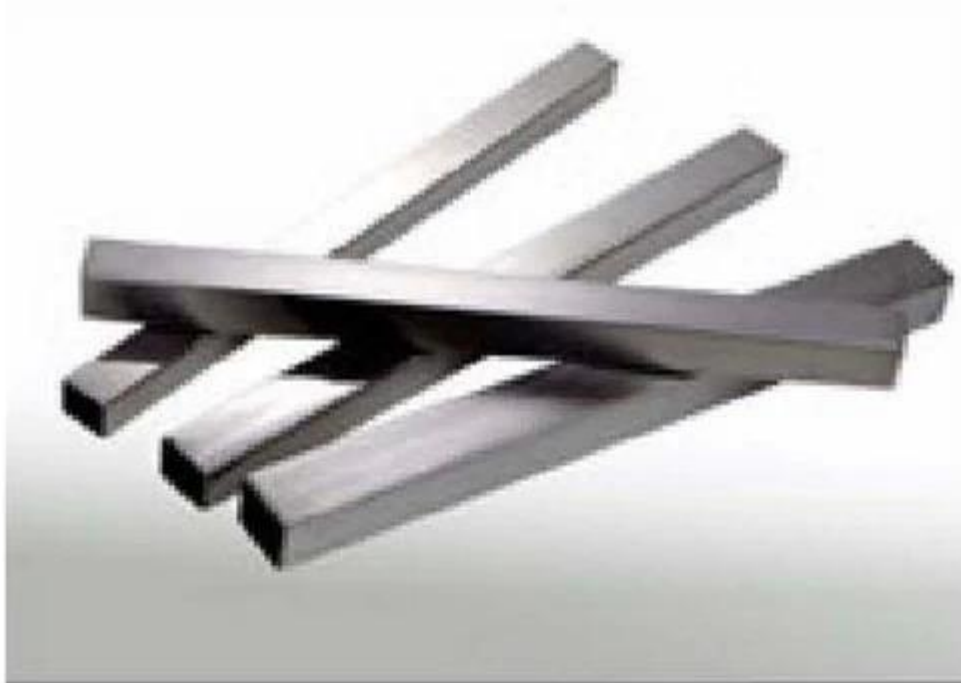
KEBIL 科比奥™

ISO
9001:2008
REGISTERED

Factory Audit

www.launch-china.cn

Square stainless steel pipe



www.launch-china.cn

5. Factory & Certification





6. Customers







build &
renovating
expo

Friday 4 July - Sunday 6 July 2014
 Melbourne Exhibition Centre



[7.Contact](#)



董 萍 Doris Dong

Senior Sales Representative

☎ (86) 135 3050 6265

深圳市南山区南山大道1092号亿利达大厦B区3栋5003

Room 5003, Building 3, Yilida Building, No.1092
Nanshan Road, Nanshan District, Shenzhen, China
postal code 518054

☎ (86-755) 8603 7559

☎ (86-755) 8637 2611

✉ sales04@launch-china.cn

💻 www.launch-china.com

www.chinabalustrade.com

Thank you for visiting. Please do not heasite to contact us for factory direct price and professional advises.