

## Glass Balustrade Deck [Railings Handrails Aluminum](#)

### Product Description

---

Product Name	Glass Balustrade Deck Railings Handrails Aluminum
Material	Aluminum 6063 T5
Finish	Powder coating (black,white,gray or customers' color)
Maximum Glass Thickness	12mm
Square Dimension	50x50mm,3mm thickness
Round Dimension	Diameter 50mm,3mm thickness
Standard Height	1265mm or customers' heights
Installation	Surface mounting or core drill mounting
Strength Test Report	Available
Ready to Install	Yes
Glass to Floor Gap	50mm
End Cap to Glass Distance	10mm
Sold as A Kit	base post & cover, top end cap, 50mm length welded aluminum insert at the bottom,plastic seat for glass to sit on, plastic channel
Types	1) half post 2) one way end post 3) 2 way 180 degree 4) 2 way 90 degree 5) 2 way 135 degree
Application	swimming pool aluminum fence,balcony aluminum glass railing,aluminum deck railing,stairs aluminum handrail, aluminum handrails railing
Sample	Available to check quality before order
Factory Inspection	Available
Safety Packing	Bubble bag - cardboard box - carton

### Aluminum Handrail Details

---

1) Round aluminum handrail

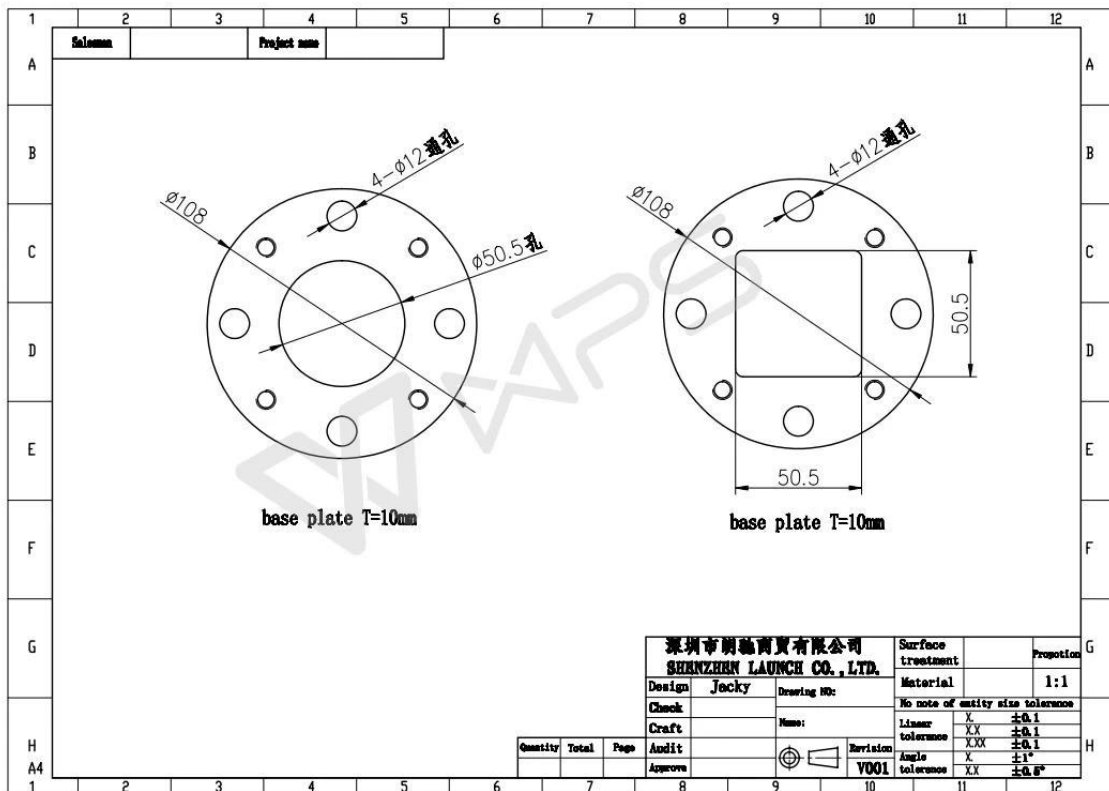
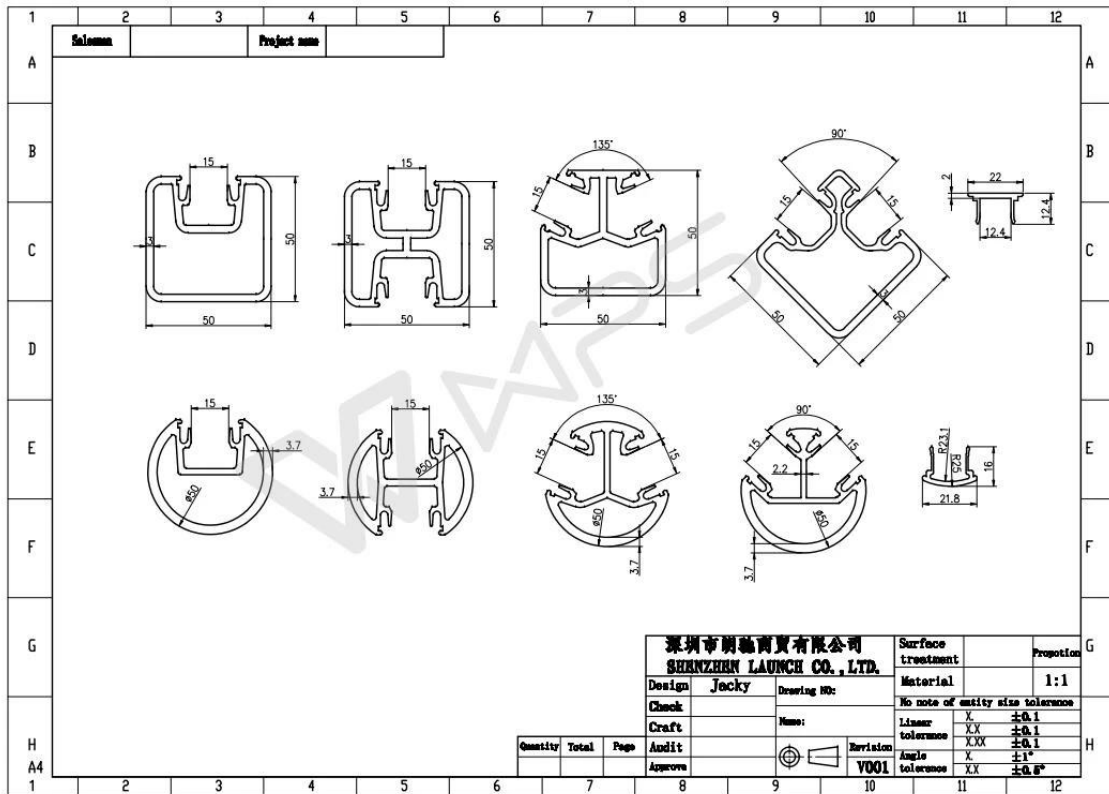


2) Square aluminum handrail



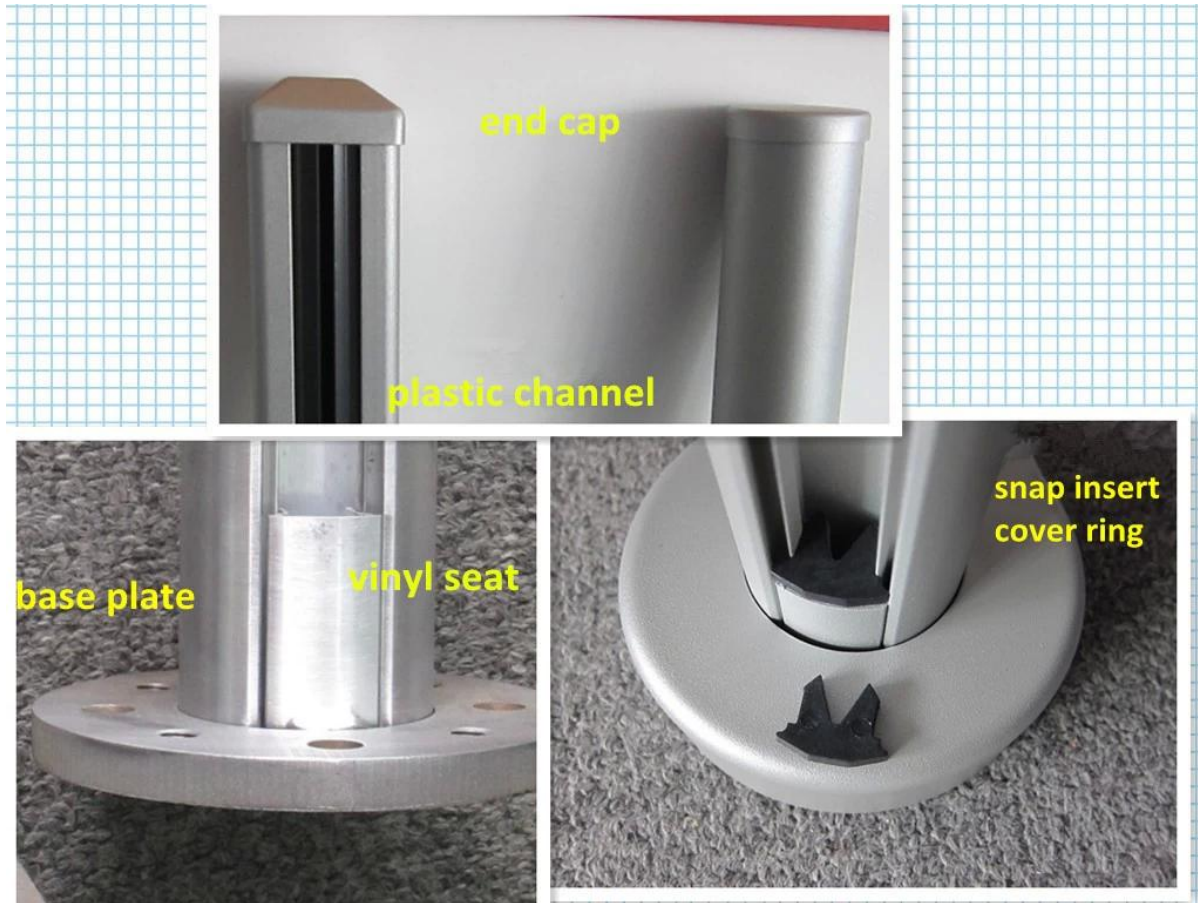


3) Aluminum handrail drawing



4) A kit of aluminum handrail post





## **Aluminum Handrail Fittings details**

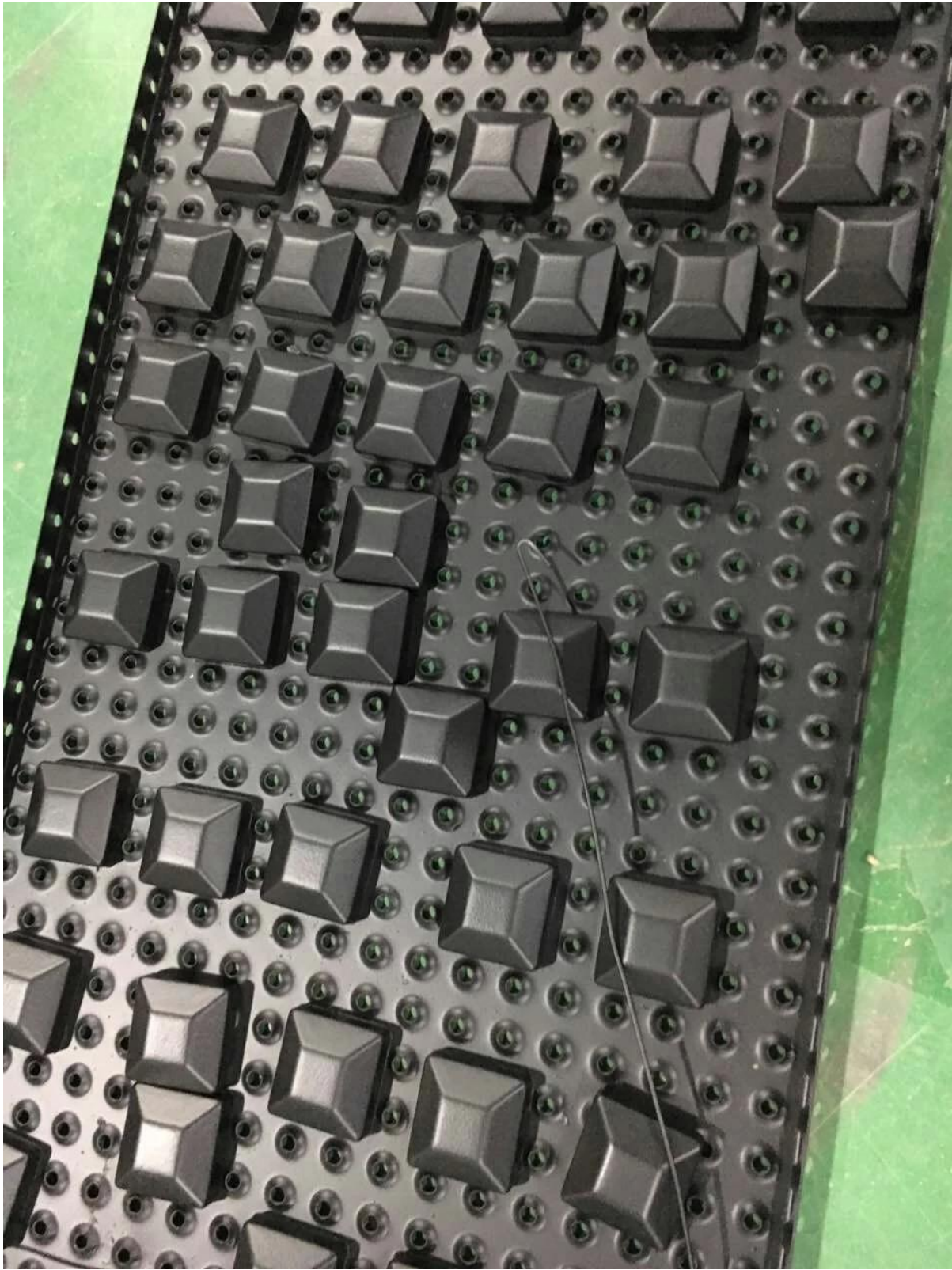
---

Covers





End caps



Base plate welding





## Aluminum Handrail Strength Test Report

### Introduction

MTS Metallurgical Testing Services was engaged at the client's request to witness the installation of a sample pool fence post and to subsequently conduct load tests on the post to the requirements of the Australian Standard AS 1926.1 - 2012.

Standard/Specification AS 1926.1 - 2012, Section 3.2 and Appendix B

### Results Summary

(For details of individual tests, refer to the tables on the following pages.)

ID	Item/Heat No.	Dimensions/Type/Details	Finish	Overall Assessment
14110/01	ASB1265	1265mm High, 50mm Square, Aluminium, Base Plate	6063-T5	COMPLIES

### Remarks

After completion of the testing, the post was found to be in sound condition with no breakage, tearing or signs of fracture and no looseness of the fixings.

Colin Lorrimer  
Metallurgical Testing Manager



Accreditation No: 15624  
Accredited for compliance  
with ISO/IEC 17025

## Aluminum Railing Projects

Outdoor steps aluminum railing in Norway.



Swimming pool fence in Australia.







## FAQ

---

1.Are you factory  
Yes, we are factory.

2.Do you offer free samples?  
Yes, we offer free samples, but customers need to pay express charges.

3.What materials do you have?  
We have the material of stainless steel 304, 316, 316L and Duplex 2205.

4.What is your MOQ?  
MOQ of order required is 1 pc.

5.What kind of payment do you accept?  
We accept the payment of T/T, LC, PayPal, West Union, etc.

6.What is your payment term?  
Our payment term is T/T 100% or 30/70 or L/C at sight .

7.What is your delivery time?  
Our delivery time is from 5 days to 30 days based on your quantity.

8.Do you offer OEM & ODM service?  
Yes we offer OEM&ODM service.



### 9.Do you offer after-sales service?

Yes, we offer after-sales service. Any complaint for orders will be dealt with in time within 12 hours.

## Contact

---

Any enquiries or questions, please leave a message. Will get back to you as soon as possible!  
For any urgent enquiry, please get in touch below:

-Email: sales04@launch-china.cn  
-Tel: (86-755) 8603 7559  
-Skype: launch\_04  
-Mob/whats APP: +86-13530506265



**董 萍** Doris Dong

Senior Sales Representative

☎ (86) 135 3050 6265

---

深圳市南山区南山大道1092号亿利达大厦B区3栋5003

Room 5003, Building 3, Yilida Building, No.1092  
Nanshan Road, Nanshan District, Shenzhen, China  
postal code 518054

---

☎ (86-755) 8603 7559  
☎ (86-755) 8637 2611  
✉ sales04@launch-china.cn  
💻 www.launch-china.com  
www.chinabalustrade.com