

Glass Railing Baluster Post Stainless Steel Glass Clamp in Black Matt Finish for 8-12mm Thickness

| | |
|----------------------------|---|
| Origin | Guangdong, China(Mainland) |
| Brand | Kebil |
| Model | G105 |
| Dimension | 55 x 45 x 28(mm) |
| For glass thickness | 8-12(mm) |
| Material | Stainless steel 304, 316 |
| Surface Treatment | Satin brushed, mirror polished, black, woodgrain |
| Package | Individually In Plastic Bag, Standard Carton For Outer Packing |
| Certificate | ISO 9001-2000 |
| Usage | (1) For Construction And Handrail Use. (2) In Shopping Mall, House. Railing Glass Clamps |
| Features | Made Of Stainless Steel, Beautiful Outlook, Easy To Clean,Good Quality Etc. |
| Related Keywords | Glass clamp, glass railing hardware, stainless steel glass clamp, glass railing clamp, stainless steel wall mounted glass clamp |
| Application | Stair Railings / Handrails,balcony railing designs / frameless glass balcony railing,Deck Railings / Handrails,Porch Railings / Handrails,Bridge Railings / Handrails Indoor Or Outdoor Decorations. |
| Lead Time | 2-4 weeks. |
| MOQ | 10 pieces. |

Port: Shenzhen, China

Trade terms available: FOB , CIF , C&F , CFR , EX-WORKS

Payment terms available:T/T ; L/C at sight ; Western Union , Alibaba Escrow

Product Images:

Eletro-plating in black matt



For connecting to square baluster/wall and round baluster post:



Satin brushed:



Mirror polished:





Packing:



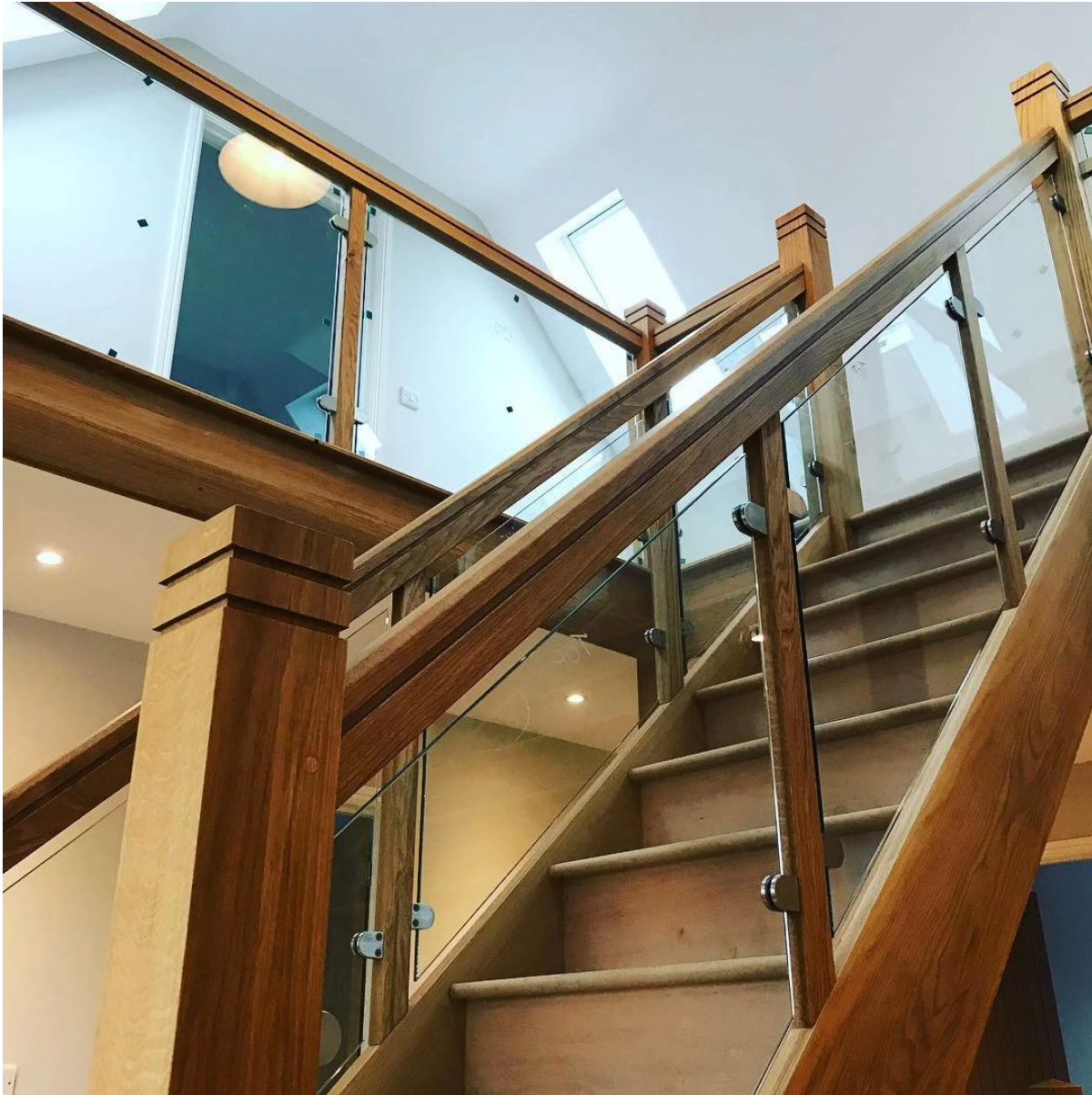


Different types of glass clamps with dimensions:

Specifications of all glass clamps in our company

| Drawing | Picture | Ref. | A | B | C | D | E |
|---------|---------|-------|----|----|----|----|-------------|
| | | G108 | 55 | 55 | 25 | 11 | 0 |
| | | G108R | 58 | 55 | 30 | 11 | R25.4 |
| | | G101 | 51 | 41 | 25 | 11 | 0 |
| | | G101R | 55 | 41 | 25 | 11 | R21.5/R25.4 |
| | | G102 | 44 | 44 | 25 | 11 | 0 |
| | | G102R | 48 | 44 | 25 | 11 | R21.5/R25.4 |
| | | G103 | 50 | 40 | 22 | 8 | 0 |
| | | G104 | 50 | 40 | 26 | 12 | 0 |
| | | G105 | 54 | 45 | 28 | 14 | 0 |
| | | G107 | 63 | 45 | 28 | 14 | 0 |
| | | G103R | 52 | 40 | 22 | 8 | R21.5 |
| | | G104R | 52 | 40 | 26 | 12 | R21.5 |
| | | G105R | 58 | 45 | 28 | 14 | R21.5/R25.4 |
| | | G107R | 66 | 45 | 28 | 14 | R21.5/R25.4 |
| | | G106 | 50 | 40 | 25 | 12 | 0 |
| | | G106R | 52 | 40 | 25 | 12 | R21.5/R25.4 |

This type of glass clamp can be fixed to square post and wall.



the clamp usually used with stainless steel post to hold glass panels, for balcony railing, terrace railing, staircase. Suitable for both indoor and out door.



WHY CHOOSE US:

1. High quality of handrail, railing and glass clamp;
2. Fashion design and complete product line;
3. Competitive price and easy to installation;
4. Material: stainless steel 316 or stainless steel 304;
5. Customer design: our experienced engineer team can developed the products and manufacture in accordance with samples, drawings or only ideas;
6. For more handrail fittings, Stainless steel railing and glass clamp, please email us for full catalogue .

Shenzhen Launch Co., Ltd was established in 2004, located at Nanshan District, Shenzhen, and one hour by car from Hongkong International Airport. Our main product is high-grade building materials includes stainless steel balustrade post, staircase handrail, balcony guardrail, swimming pool fence and other high-grade building materials. All the products are designed strictly according to the high-end market requirements. We have our own factory in Tangxia Town, Dongguan, has a variety of precision equipment more than 50 sets: CNC lathe, milling machine, punching machine, pipe cutter, argon welder, drilling machine, polisher, etc. which can provide customers with complete product processing services. With the German SPECTRO Spectrometer, we insist on testing every batch of materials to ensure that the material is highly qualified. We also have hardness gauge, secondary element and other test equipment to ensure the products meets customers' requirements.

ABOUT US

Our Team



OUR ADVANTAGE

Please do not hesitate to contact us if you have any requirement regarding our production lines, you can expect a timely reply with professional solutions!



Own factory, shortest lead time.



Can help customers design product drawings based on customer ideas and design engineering installation drawing according to the customer site sketch.



Sample order, trial order acceptable.



Provide material test report to ensure that the material is qualified.



13 years of industry experience, we can help customers recommend the best solution to help customers save cost.

OUR FACTORY

More than 13 years experience in hardware industry design and processing, we can provide customized services from design to the sample and small batch trial production.



OUR CERTIFICATE

With premium quality, competitive price and superior service, we won a lot of customers' favor.

Our products are popular in North America, European and Australia.



PRODUCTION PROCESS



Casting



CNC lathe



CNC Milling



Stamping



Drilling & Tapping

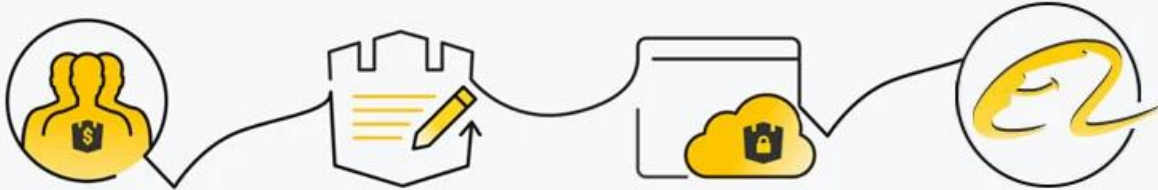


Polishing



PAYMENT & TRANSPORTATION

Welcome Alibaba Trade Assurance Order!



1 Start an order

2 Negotiate terms with our sales service & confirm order

3 Make payment

4 Alibaba provide full assurance



XPL FedEx[®]
Express

EMS[®]

DHL

TNT



FAQ

1.Are you factory?

Yes, we are factory.

2.Do you offer free samples?

Yes, we offer free samples, but customers need to pay express charges.

3.What materials do you have?

We have the material of stainless steel 304, 316, 316L and Duplex 2205.

4.What is your MOQ?

MOQ of order required is 1 pc.

5.What kind of payment do you accept?

We accept the payment of T/T, LC, PayPal, West Union, etc.

6.What is your payment term?

Our payment term is T/T(100% or 30/70)or LC at sight .

7.What is your delivery time?

Our delivery time is from 5days to 30days base on your quantity.

8.Do you offer OEM & ODM service?

Yes we offer OEM&ODM service.

9.Do you offer after-sales service?

Yes, we offer after-sales service. Any complaint for orders will be dealt with in time within 12 hours.

Contact us immediately for more information!

Email: sales03@launch-china.cn

HP/WhatsApp/WeChat: +8613686807796