

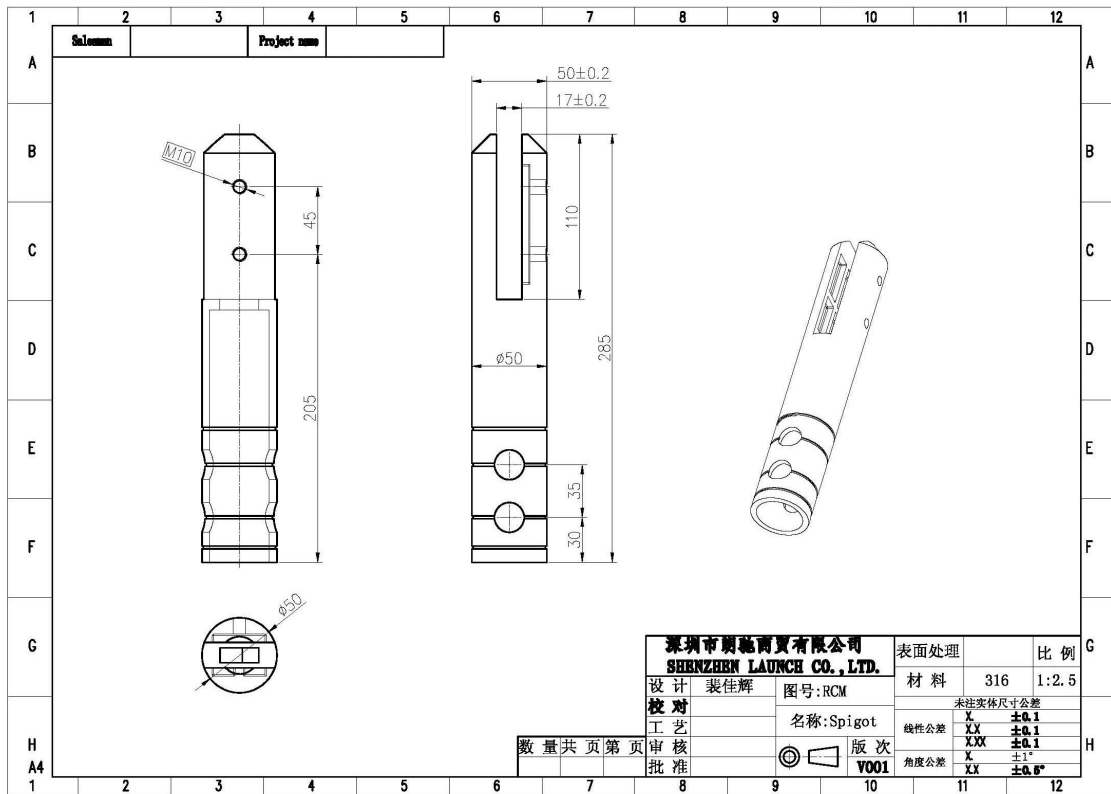
[Glass Railing Hardware Spigot](#) Manufacturer, Core Drilled Glass Spigot

Product Description

Product Name	Glass railing hardware spigot manufacturer, core drilled glass spigot
Material	Stainless steel 316 / duplex 2205
Finish	Mirror polished / satin brushed
For Glass Thickness	8-13mm
Height	285mm (90mm fixing into ground)
Round Base Size	Diameter 100mm
Net Weight	1.229kg/piece
Manufacture Method	Casting (high quality)
Packaging Details	1) One piece into one bubble bag, then into one white box 2) 12 pieces into 365x330x230mm cardboard carton 3) Packing as customers' requirements
Application	Swimming pool fence, balcony glass railing, deck frameless glass railing, staircases handrail design
Certification	Yes. Meet Australia and New Zealand standards
Sample	Available
Mount	Floor mounting, core drill mounting
MOQ	No limited. You can order as per your job requirement.
OEM & ODM Service	Available

Core Drilled Glass Spigot Details

1) Core drilled glass spigot technical drawing



2) Core drill glass spigot pictures







3) Glass spigot factory



Glass Spigot Safety Packaging

1. One piece into one bubble bag, then into one white box.
12 pieces into 365x330x230mm cardboard carton.

2. Packing as customers' requirements.



Core Drilled Glass Spigot Projects





FAQ

1.Are you factory?

Yes, we are factory.

2.Do you offer free samples?

Yes, we offer free samples, but customers need to pay express charges.

3.What materials do you have?

We have the material of stainless steel 304, 316, 316L and Duplex 2205.

4.What is your MOQ?

MOQ of order required is 1 pc.

5.What kind of payment do you accept?

We accept the payment of T/T, LC, PayPal, West Union, etc.

6.What is your payment term?

Our payment term is T/T 100% or 30/70 or L/C at sight .

7.What is your delivery time?

Our delivery time is from 5 days to 30 days based on your quantity.

8.Do you offer OEM & ODM service?

Yes we offer OEM&ODM service.

9. Do you offer after-sales service?

Yes, we offer after-sales service. Any complaint for orders will be dealt with in time within 12 hours.

Contact

Any enquiries or questions, please leave a message. Will get back to you as soon as possible!

For any urgent enquiry, please get in touch as below

-Email: sales04@launch-china.cn

-Tel: (86-755) 8603 7559

-Skype: launch_04

-Mob/whats APP: +86-13530506265



董萍 Doris Dong

Senior Sales Representative

☎ (86) 135 3050 6265

深圳市南山区南山大道1092号亿利达大厦B区3栋5003

Room 5003, Building 3, Yilida Building, No.1092
Nanshan Road, Nanshan District, Shenzhen, China
postal code 518054

☎ (86-755) 8603 7559

☎ (86-755) 8637 2611

✉ sales04@launch-china.cn

🌐 www.launch-china.com

🌐 www.chinabalustrade.com