

## **Glass Railing Round Clamp, 10-12mm Round Glass Clamps for Handrail**

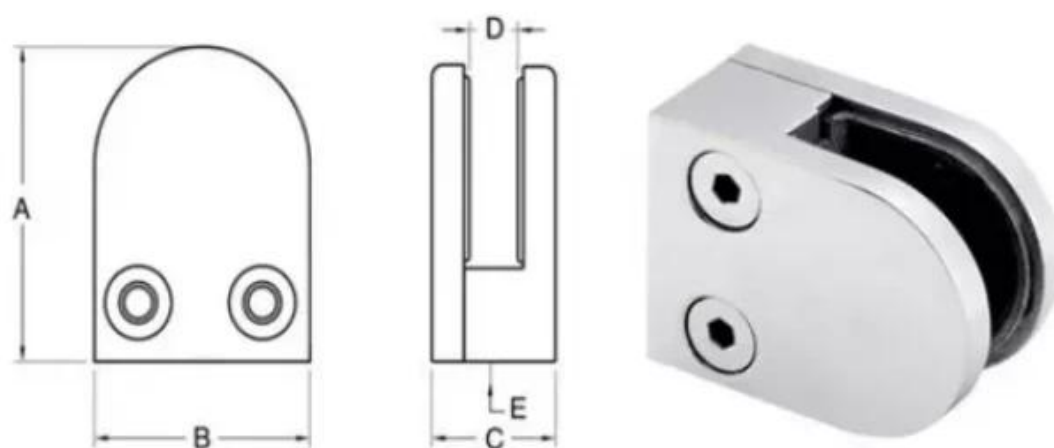
<b>Product Name</b>	<b>Glass Railing Round Clamp, 10-12mm Round Glass Clamps for Handrail</b>
<b>Size</b>	<b>W55*D45*T28(mm)</b>
<b>For glass thickness</b>	<b>3/8" 10mm Glass, 1/2" 12mm Glass</b>
<b>Material</b>	<b>SUS304, SUS316</b>
<b>Surface Treatment</b>	<b>Satin brushed, mirror polished or electroplated</b>
<b>Package</b>	<b>Individually In Plastic Bag, Standard Carton For Outer Packing</b>
<b>Certificate</b>	<b>ISO 9001-2000</b>
<b>Usage</b>	<b>(1) For Construction And Handrail Use. (2) In Shopping Mall, House. Railing Glass Clamps</b>
<b>Features</b>	<b>Made Of Stainless Steel, Beautiful Outlook, Easy To Clean, Good Quality Etc.</b>
<b>Related Keywords</b>	<b>Glass Clamp / Stainless Steel Glass Clamp / Stainless Steel Clamp / Glass Balustrade Clamp / Glass Clip / Frameless Glass Clamp</b>
<b>Application</b>	<b>Decoration, Widely Used On Stainless Steel Balustrade &amp; Handrails. Indoor Or Outdoor Decorations.</b>
<b>Lead Time</b>	<b>2-4 weeks.</b>
<b>MOQ</b>	<b>100 pieces.</b>

Port: Shenzhen, China

Trade terms available: FOB , CIF , C&F , CFR , EX-WORKS

Payment terms available: T/T ; L/C at sight ; Western Union , Alibaba Escrow

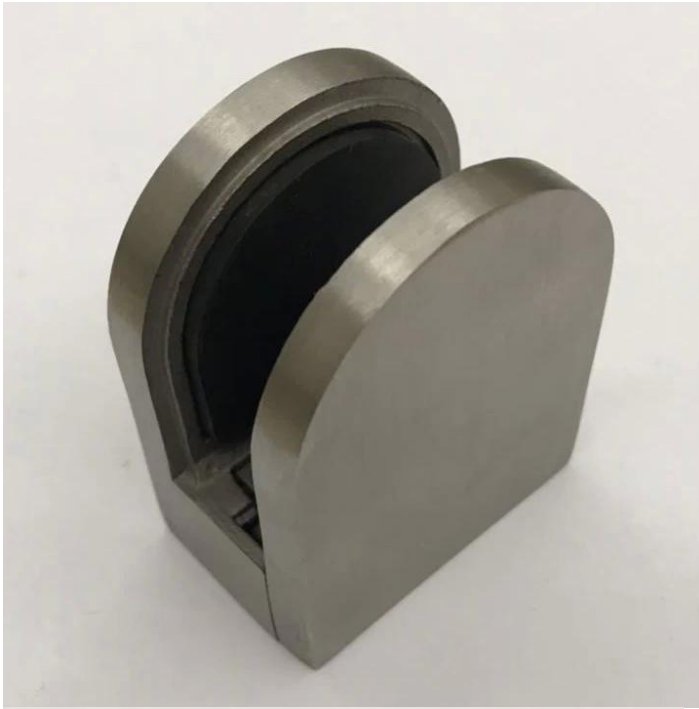
**Product Images:**



Item No.	A	B	C	D
G103	50	40	22	8
G104	50	40	26	12
→ G105	54	45	28	14
For 10-12mm glass				







**Gold Electroplated Finish:**



**Black Electro-plated Finish:**



Different types of glass clamps with dimensions:





**G102**



**G103/G104**



**G105**



**G108R**



**PV-90**



**CB-180**



**BC-60**



**BC-80x35**



**CB-90**

## Specifications of all glass clamps in our company

Drawing	Picture	Ref.	A	B	C	D	E
		G108	55	55	25	11	0
		G108R	58	55	30	11	R25.4
		G101	51	41	25	11	0
		G101R	55	41	25	11	R21.5/R25.4
		G102	44	44	25	11	0
		G102R	48	44	25	11	R21.5/R25.4
		G103	50	40	22	8	0
		G104	50	40	26	12	0
		G105	54	45	28	14	0
		G107	63	45	28	14	0
		G103R	52	40	22	8	R21.5
		G104R	52	40	26	12	R21.5
		G105R	58	45	28	14	R21.5/R25.4
		G107R	66	45	28	14	R21.5/R25.4
		G106	50	40	25	12	0
		G106R	52	40	25	12	R21.5/R25.4

This type of glass railing clamp can be fixed to square post and wall.





The glass railing clamp usually used with stainless steel post to hold glass panels, for balcony railing, terrace railing, staircase. Suitable for both indoor and out door.



### **WHY CHOOSE US:**

1. High quality of handrail, railing and glass clamp;
2. Fashion design and complete product line;
3. Competitive price and easy to installation;
4. Material: stainless steel 316 or stainless steel 304;
5. Customer design: our experienced engineer team can developed the products and manufacture in accordance with samples, drawings or only ideas;
6. For more handrail fittings, Stainless steel railing and glass clamp, please email us for full catalogue .

### **FAQ**

**1.Are you factory?**

**Yes, we are factory.**

**2.Do you offer free samples?**

**Yes, we offer free samples, but customers need to pay express charges.**

**3.What materials do you have?**

**We have the material of stainless steel 304, 316, 316L and Duplex 2205.**

**4.What is your MOQ?**

**MOQ of order required is 1 pc.**

**5.What kind of payment do you accept?**

**We accept the payment of T/T, LC, PayPal, West Union, etc.**

**6.What is your payment term?**

**Our payment term is T/T(100% or 30/70)or LC at sight .**

**7.What is your delivery time?**

**Our delivery time is from 5days to 30days base on your quantity.**

**8.Do you offer OEM & ODM service?**

**Yes we offer OEM&ODM service.**

**9.Do you offer after-sales service?**

**Yes, we offer after-sales service. Any complaint for orders will be dealt with in time within 12 hours.**

Contact us immediately for more information!

Email: sales03@launch-china.cn

Mob: +8613686807796