

Description

- Material: high grade alloy 316 stainless steel, or as per your requirement
- Finish: brushed or polished
- Diameter 50mm (customer size is available)
- For mounting to steel, concrete, or wood substrate
- For glass thickness: 8-12mm, or as per your requirement
- Base, cap, mounting, rubber washers and grommet are included.
- Sample: available to check quantity before placing an order

Products details

Polished standoff SF-50 (with screw mounting to steel and concrete)

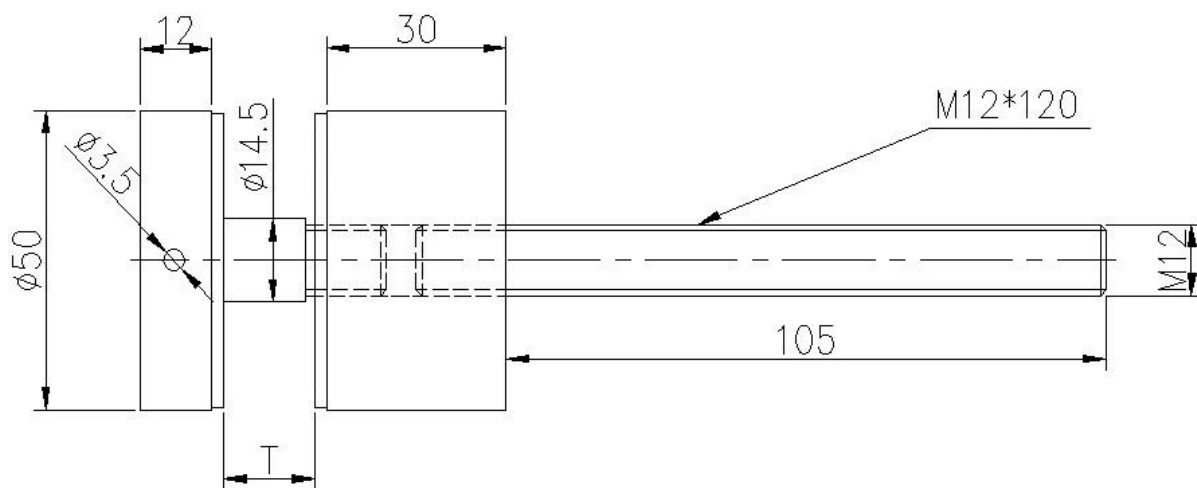


Brushed standoff SF-50 (with screw mounting to wood substrate)

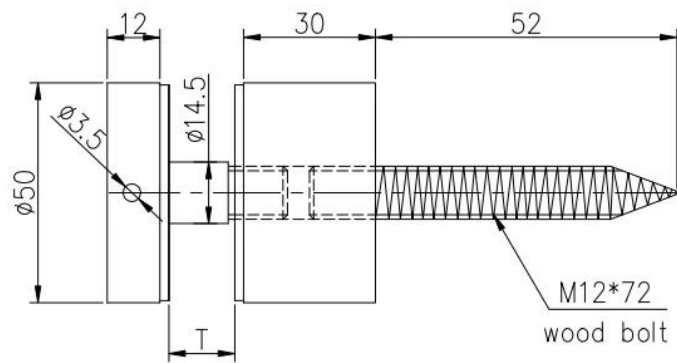


Drawings

For steel and concrete mounting glass standoff drawing



For wood substrate mounting glass standoff drawing



Project show

Standoff for indoor glass railing use



Standoff for outdoor balcony design



Standoff for stair case railing



Packing & Delivery

- One piece into one plastic bag, then into one box. 15-20 boxes into one carton.
- Delivery time: 3-5 days by air. 10-15 days by sea
- Regular lead time: 7 days after payment if product are in stocks. 15-20 days after payment if products are not in stocks. It depends on quantity.



2013/12/03

Need a quote or any questions, please leave a message.

Or contact me as below info. will get back to you as soon as possible!

For any urgent enquiry, please get in touch on wechat: 973219879 or what's up: +86 13530506265



董 萍 Doris Dong

Senior Sales Representative

☎ (86) 135 3050 6265

深圳市南山区南山大道1092号亿利达大厦B区3栋5003

Room 5003, Building 3, Yilida Building, No.1092
Nanshan Road, Nanshan District, Shenzhen, China
postal code 518054

☎ (86-755) 8603 7559

☎ (86-755) 8637 2611

✉ sales04@launch-china.cn

🌐 www.launch-china.com

www.chinabalustrade.com