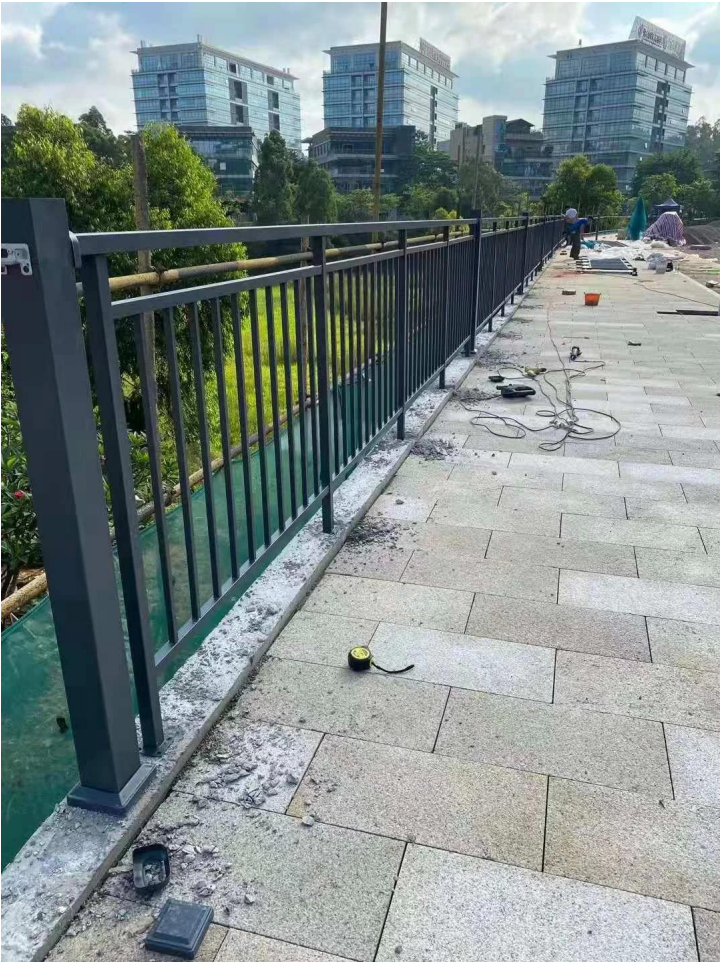


## Hot-DIP Galvanized Wrought Iron Balcony Safety Fence Security Steel Railing Balcony Balustrade

Product Name	Galvanized steel railing	Regular size	H 1.1 M*W 1.2 M
Limit high	2 M	Tube thickness	1.2-2.5 mm
Starting batch	20 m or 20□	Place of Product	Guangdong Province,China
Material	Steel	Unit price calculation method	Height below 1.2 m in meters, Height above 1.2 m in square
Craft	assembled and welded	Surface treatment	Powder coated







**Assembly:**



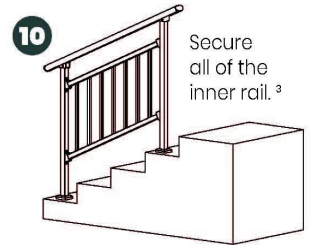
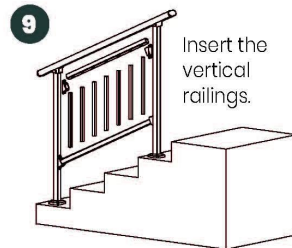
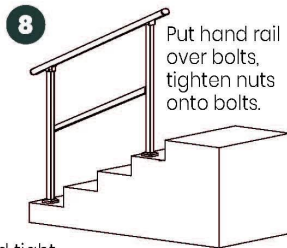
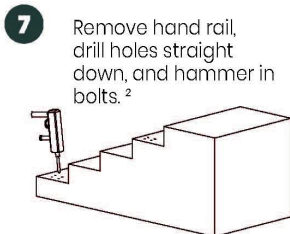
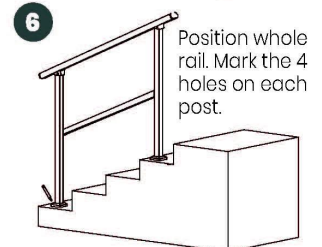
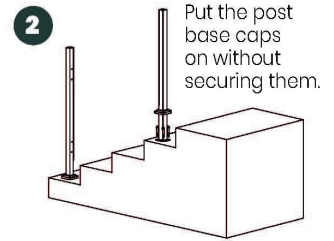
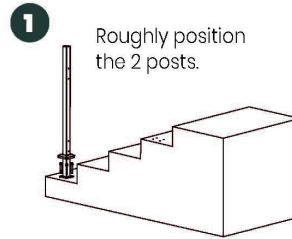
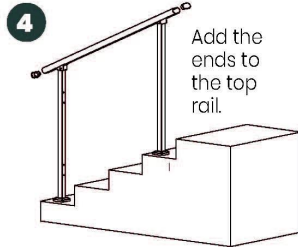
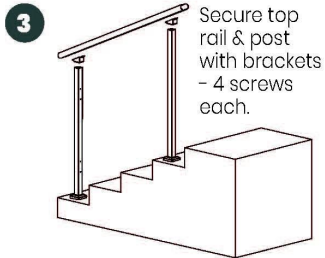


**Installation guides:**

# Guard Rail Assembly Instructions

**Tools Required:** Electrical Power Drill  
(Impact Drill Preferred)

**Overview:** Assemble the rail and position it before marking holes for drilling. Improper installation can lead to failure of rail system or injury.



<sup>2</sup> Double check posts are parallel and tight against inside rail before marking holes for drilling.

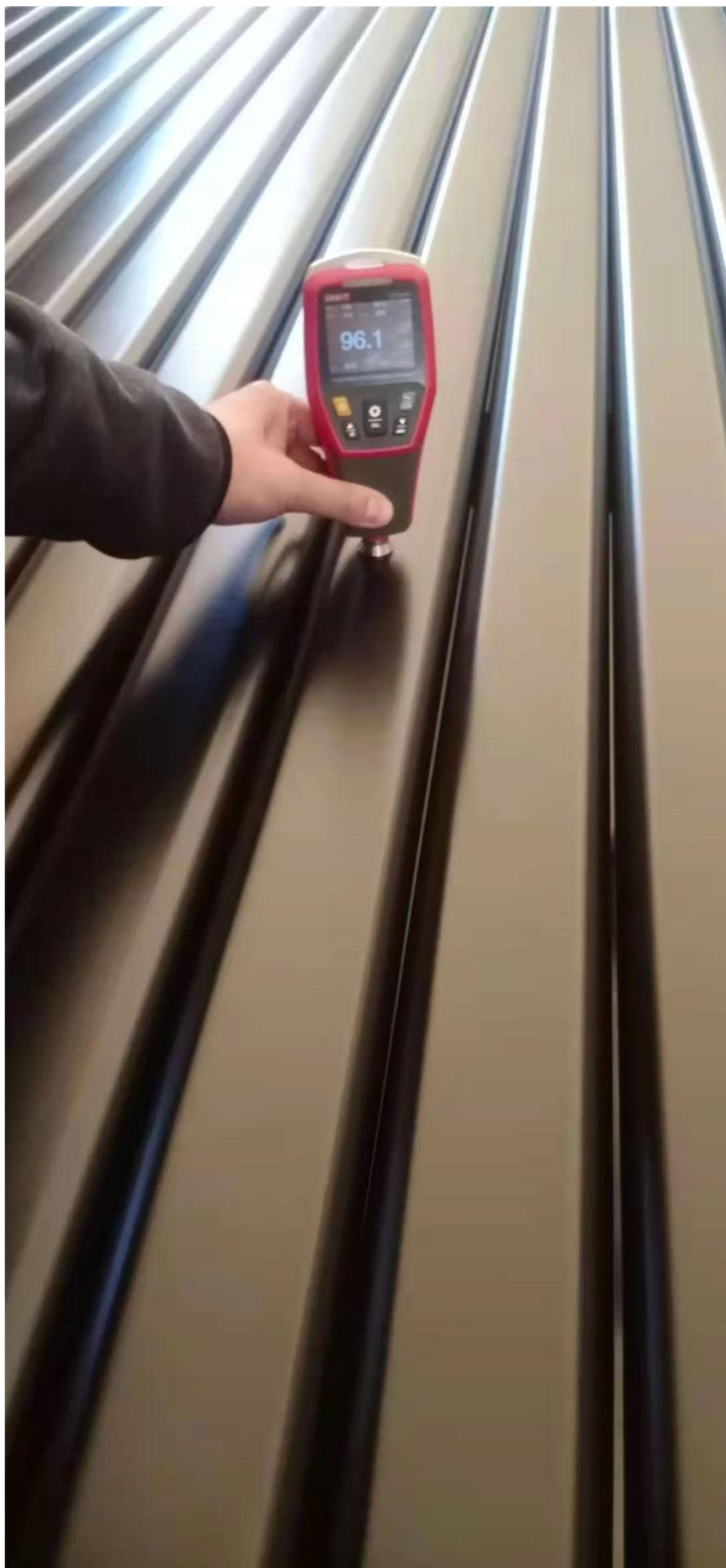
<sup>1</sup> Inside rail will be loose until each post is secured to the ground.

<sup>3</sup> Push and pull top rail & inside rail to ensure all is secure.

**Production & packaging of staircase steel handrails at our workshop**

:











**Please feel free to contact us for more details:**

**Contact: Eve**

**Email: [sales03@launch-china.cn](mailto:sales03@launch-china.cn)**

**HP/WhatsApp: +8613686807796**