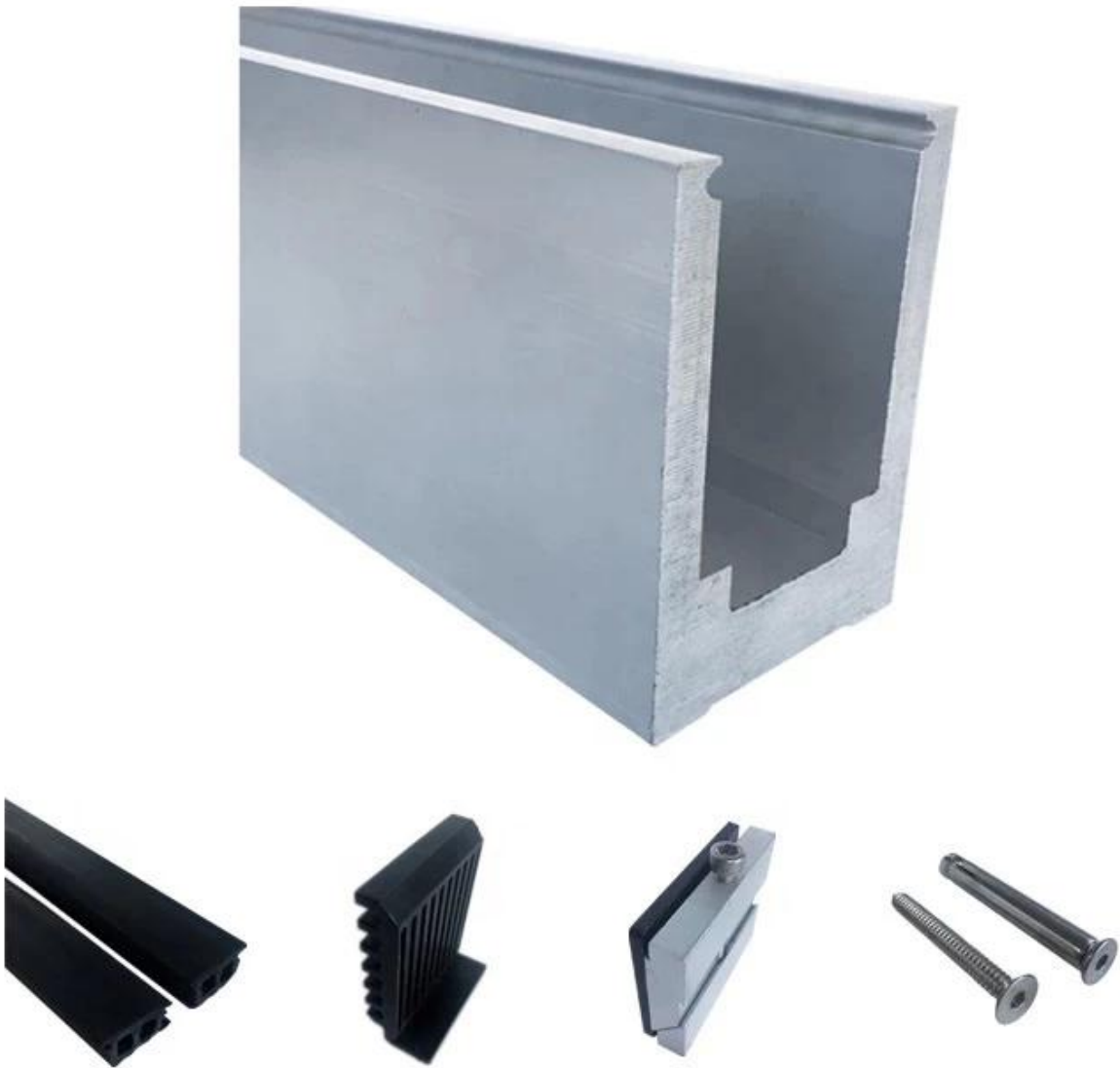
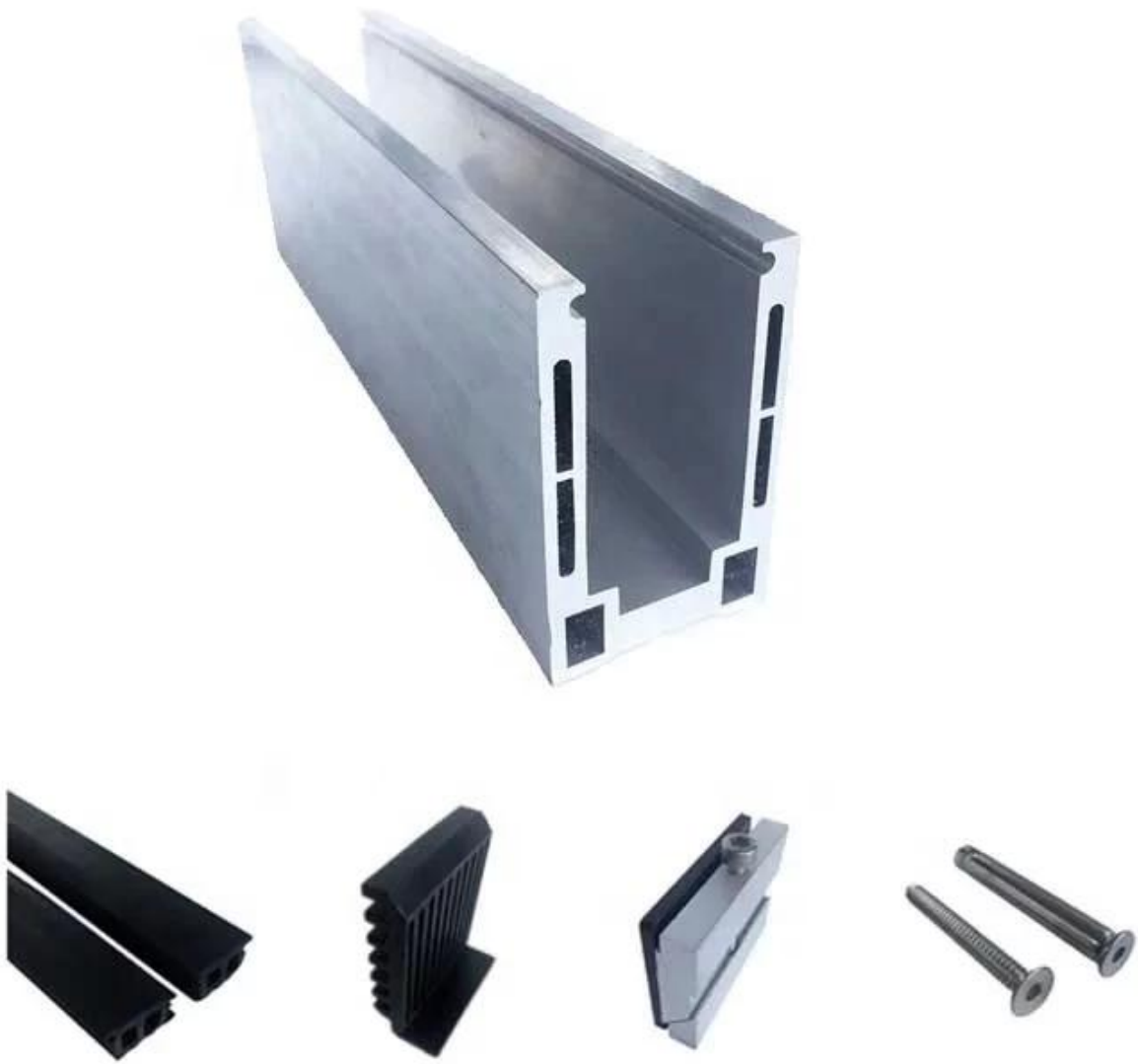


Hot Sale Aluminum U Channel Base Frameless Glass Railing For Indoor And Outdoor

Aluminum U channel profile specifications:

RAILING PART - BASEMENT	MATERIAL	DIMENSION(MM)	SURFACE FINISHED	SUITED GLASS THICKNESS (MM)
U Channel / U Profile	Aluminum Alloy	102*62	Anodizing / Spray Paint	12-13.52
		102*67		8+1.52+8
		102*70.5		10+1.52+10
Inside System & Bolt	3 or 4 meters per length			
Cladding	SUS 304 / SUS 316	102	Brushed / Mirror	/
Rubber	Plastic	Various	Black	All





Available Models:

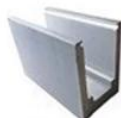
LCH-A01/A02: without/with cladding for use with 20mm to 21.52mm glass

LCH-A01



20 mm to 21.52 mm tempered glass

1 m aluminium groove contains the following accessories
(excluding glass)



Aluminum trough 1 m Waterproof tape
2 meters



Aluminum plastic fittings
3 sets



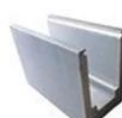
Expansion screws
3 pieces

LCH-A02



20 mm to 21.52 mm tempered glass

1 m aluminium groove contains the following accessories
(excluding glass)



Aluminum trough 1 m



Decorative cover
2 meters



Aluminum plastic fittings
3 sets



Expansion screws
3 pieces

LCH-B01/A02: without/with cladding for use with 16mm to 17.52mm glass

LCH-B01



16 mm to 17.52 mm tempered glass

1 m aluminium groove contains the following accessories
(excluding glass)



Aluminum trough 1 m Waterproof tape
2 meters



Aluminum plastic fittings
3 sets



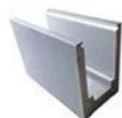
Expansion screws
3 pieces

LCH-B02



16 mm to 17.52 mm tempered glass

1 m aluminium groove contains the following accessories
(excluding glass)



Aluminum trough 1 m



Decorative cover
2 meters



Aluminum plastic fittings
3 sets



Expansion screws
3 pieces

LCH-

C01/A02: without/with cladding for use with 12mm to 13.14mm glass

LCH-C01



12 mm to 13.14 mm tempered glass

1 m aluminium groove contains the following accessories
(excluding glass)



Aluminum trough 1 m Waterproof tape 2 meters



Aluminum plastic fittings 3 sets



Expansion screws 3 pieces

LCH-C02



12 mm to 13.14 mm tempered glass

1 m aluminium groove contains the following accessories
(excluding glass)



Aluminum trough 1 m



Decorative cover 2 meters



Aluminum plastic fittings 3 sets



Expansion screws 3 pieces

LCH-

D01/A02: without/with cladding for use with 12mm to 13.14mm glass

LCH-D01



12 mm to 13.14 mm tempered glass

1 m aluminium groove contains the following accessories
(excluding glass)



Aluminum trough 1 m Waterproof tape 2 meters



Aluminum plastic fittings 3 sets



Expansion screws 3 pieces

LCH-D02



12 mm to 13.14 mm tempered glass

1 m aluminium groove contains the following accessories
(excluding glass)



Aluminum trough 1 m



Decorative cover 2 meters



Aluminum plastic fittings 3 sets



Expansion screws 3 pieces

For both commercial and residential application
For both wholesale and retail (We are manufacturer)



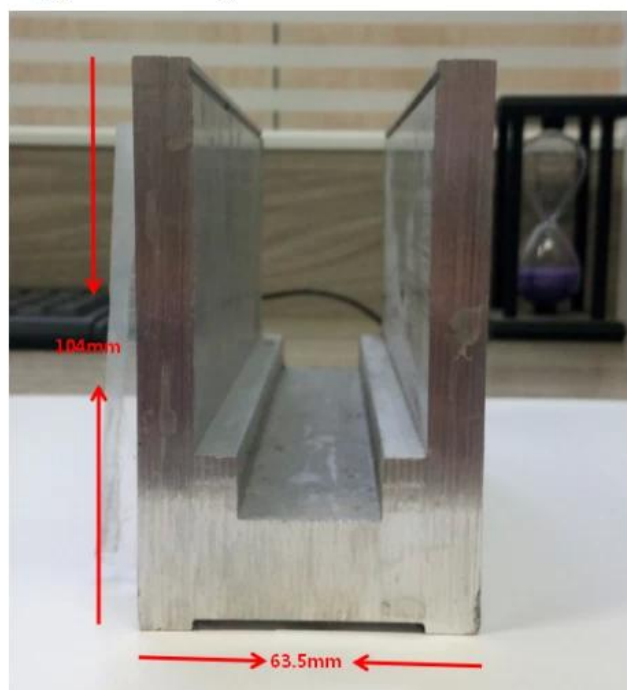
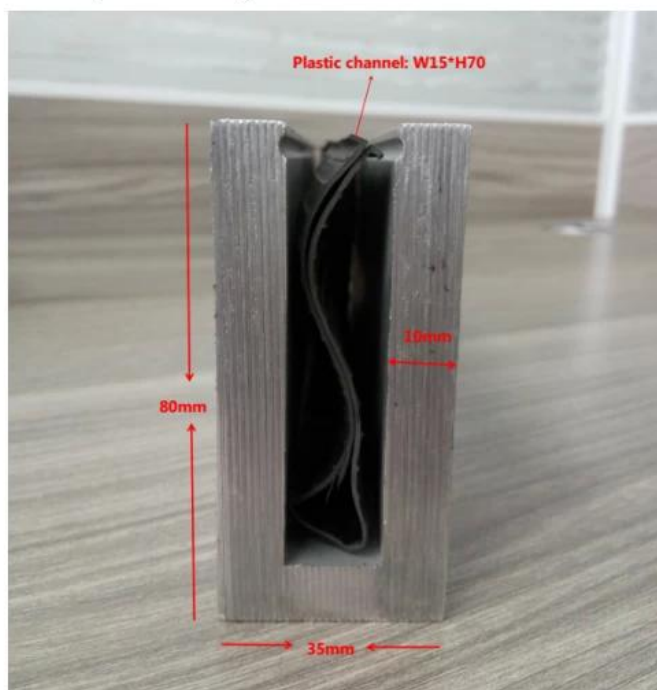




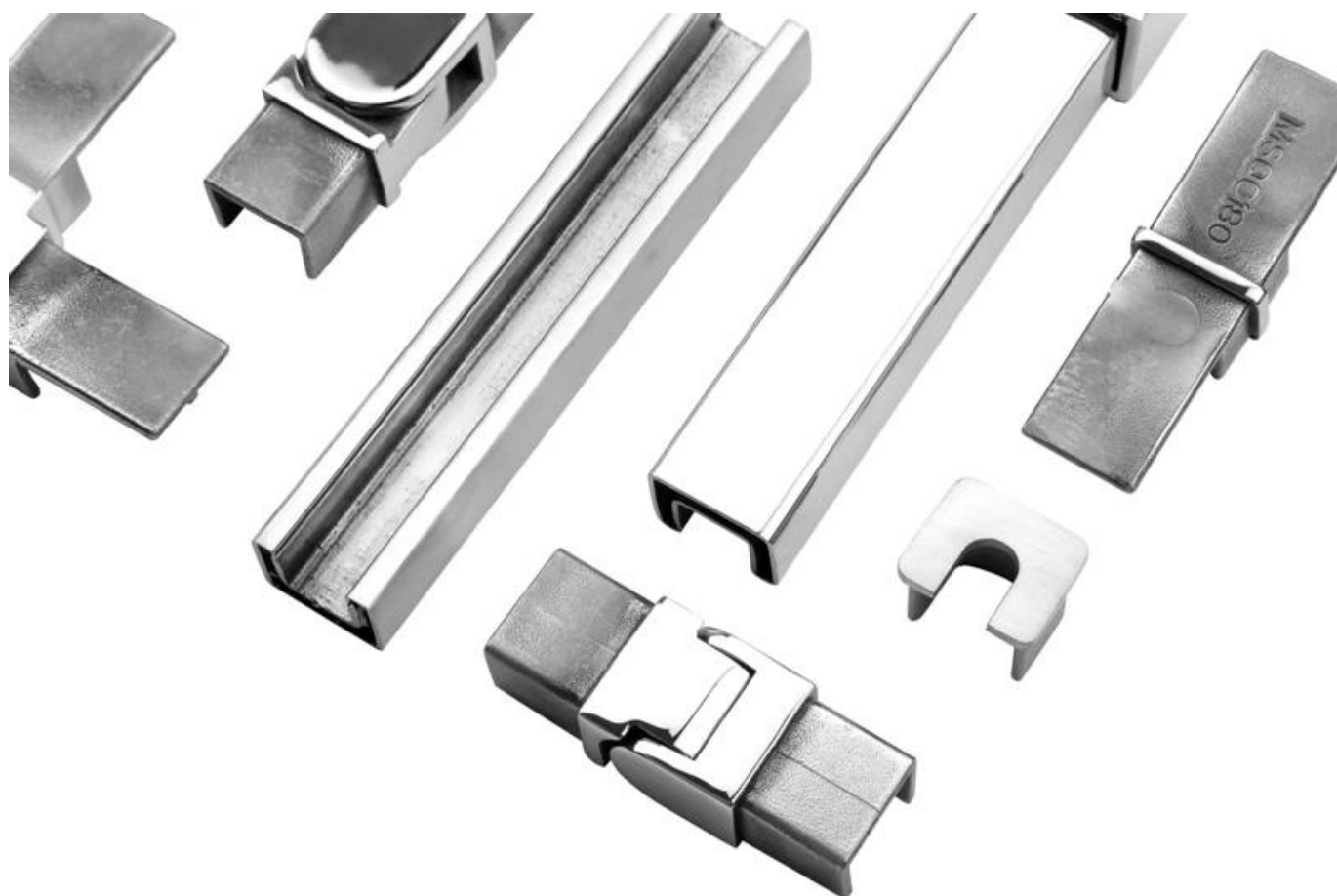
MORE TYPES OF ALUMINIUM U CHANNEL FOR GLASS RAILING:

Small profile: for glass thickness 10-12.76mm

Big profile: for glass thickness 20-30mm



SLOT TUBE HANDRAIL:





FAQ

1. **Are you factory?**
Yes, we are factory.
2. **Do you offer free samples?**
Yes, we offer free samples, but customers need to pay express charges.
3. **What materials do you have?**
We have the material of stainless steel 304, 316, 316L and Duplex 2205.
4. **What is your MOQ?**
MOQ of order required is 1 pc.
5. **What kind of payment do you accept?**
We accept the payment of T/T, LC, PayPal, West Union, etc.
6. **What is your payment term?**
Our payment term is T/T(100% or 30/70) or LC at sight .
7. **What is your delivery time?**
Our delivery time is from 5days to 30days base on your quantity.

8. Do you offer OEM & ODM service?

Yes we offer OEM&ODM service.

9. Do you offer after-sales service?

Yes, we offer after-sales service. Any complaint for orders will be dealt with in time within 12 hours.

Contact us now for more information:

Eve

Email: sales03@launch-china.cn

Mobile / Whatsapp: +8613686807796