

Hot Sale Cable Railing Kit Hardware 316 Stainless Steel Protective sleeves

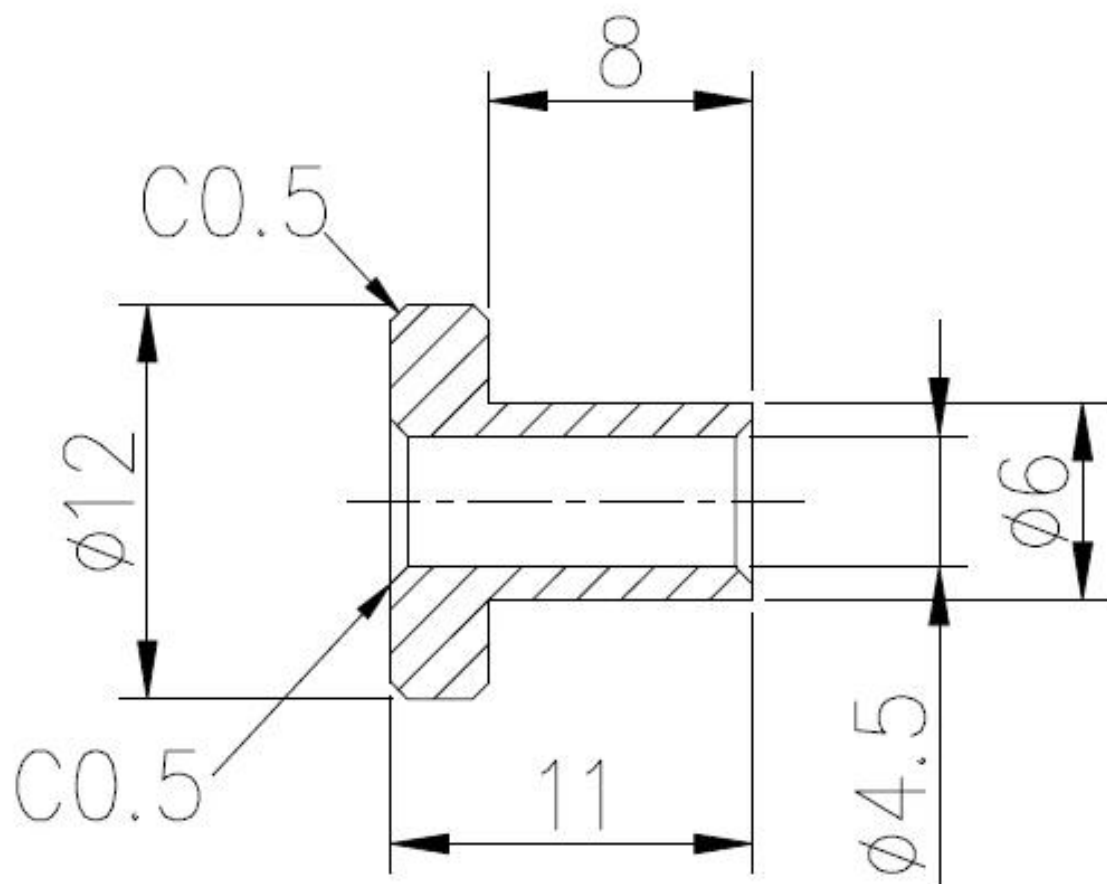
Specifications:

- * Product Name:Cable Railing Protective Sleeve
- * Material:Stainless steel T316
- * Cable size:3-5mm
- * Surface treatment: satin or polished
- * Feature:Antirust
- * Application:Outdoor or indoor
- * Usage:Protects cable from fraying or rubbing on wood or steel posts,perfect where cable transitions up or down a set of stairs,or side to side when making turns,prevents post and cable damage
- * Packaging:Polybag, carton or as per customer's requirements
- * Special specifications can also be produced according to drawing and sample.





Technial Drawing:

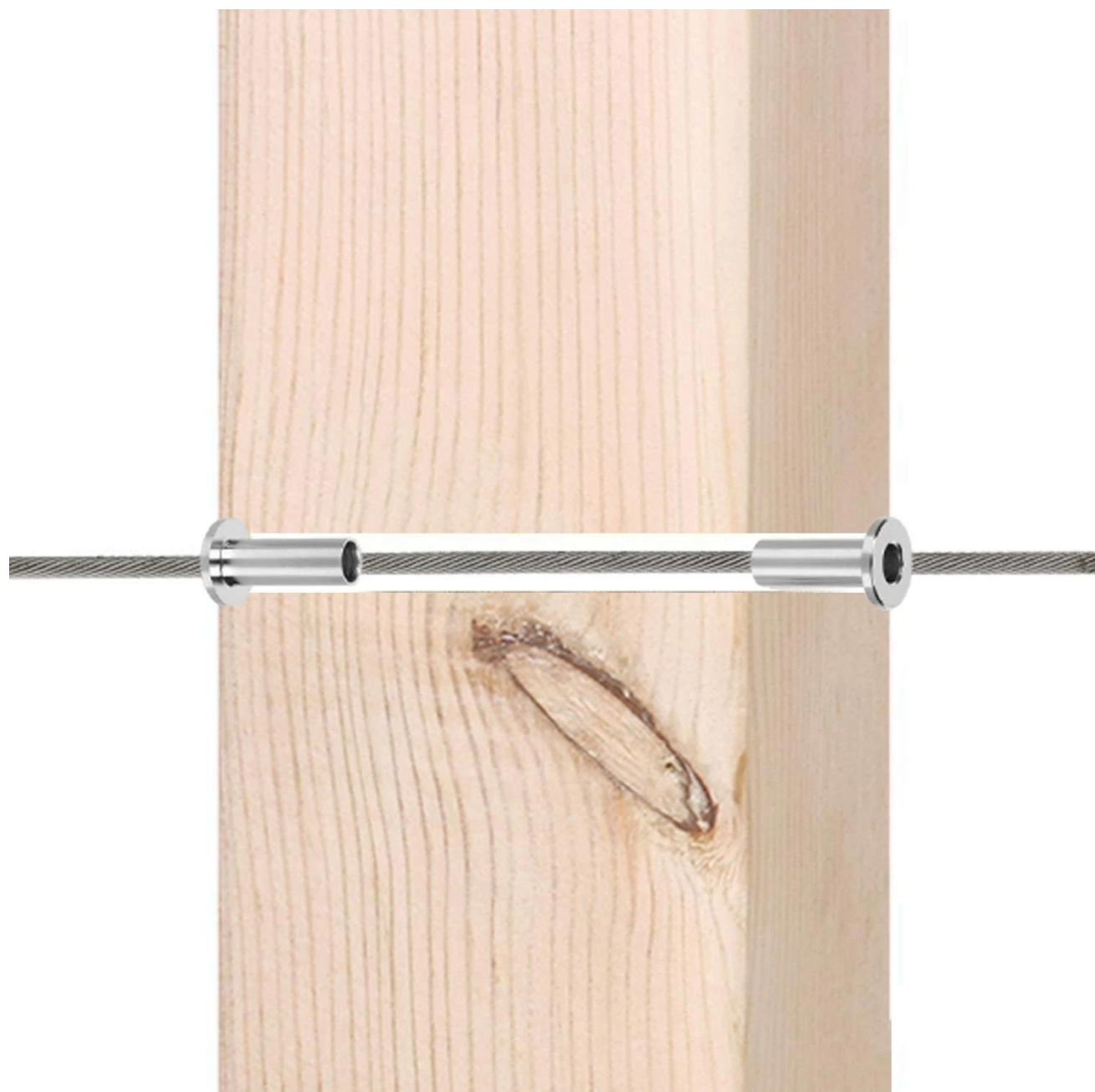


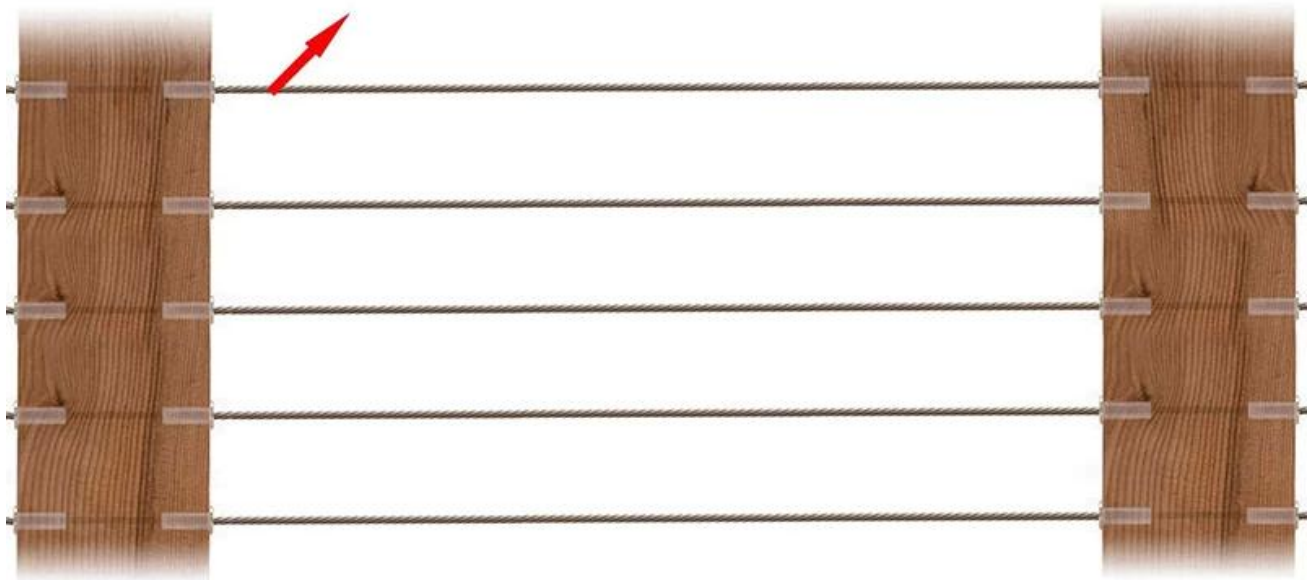
Production:



Installation:







Project Photos:



Type 316 stainless steel has the best corrosion resistance among standard stainless

steels. It resists pitting and corrosion by most chemicals, and is particular resistant to saltwater corrosion.

These can be used for a variety of applications. Sail boats and yachts, cable railing, and for shade sails.

1) Material: stainless steel 316 or stainless steel 304

2) Surface finish: highly polished or satin brushed

3) Standard: Metric and UNF

4) Customer design: our experienced engineer team can developed the products and manufacture in accordance with samples, drawings or only ideas

5) Delivery: by sea, by air or by express service

6) Price term: FOB or CIF

7) Sizes: from 3mm to 6mm or as per your requests

8) Type: Swaged countersunk head end, swaged flathead end and swaged domehead end

9) Packing: clean poly bags and cartons and pallets or as per requests

10) For more swage adjuster, please email us for full catalogue

Contact us for more information:

HP/WhatsApp/WeChat: +8615989339827

E-mail: sales04@launch-china.cn