

## Hot-sale Black Matte Pool Fence Glass to Glass Door Self Closing Hinge G-G2

Pool fencing spring loaded stainless steel 316 glass door hinge

### Features:

- Availability: In Stock
- Weight: 4.400 lbs / 1.996 kg
- Dimensions: 4.205" × 3.543" / 106.807mm × 89.992mm
- Made of SS316
- For use with 8-12.76mm glass.
- Maximum door leaf weight: 30kg/pair
- Maximum door leaf width: 900mm.
- Spring can be adjusted for closing speed control.
- Types available: Wall / square post to glass hinge model **G-W**, 180 degree glass to glass hinge model **G-G**, round post to glass hinge model **G-R**

### Spring loaded hinges

Stainless steel spring loaded hinges

-Made of SS 316

- For use of 8-12.76mm glass

Maximum door leaf weight : 30 kg /pair

Maximum door leaf width : 900mm

Spring can be adjusted for closing speed control .



Part # G-G



Part # G-R



Part # G-W

## Black Matte Pool Fence Glass to Glass Door Self Closing Hinge G-G2

**KEBIL** 科比奥®





Model No. G-G2, glass to glass hinge

**KEBIL** 科比奥®





**Model No. G-W2, glass to square post / wall hinge**



Model No. G-R, glass to square post / wall hinge



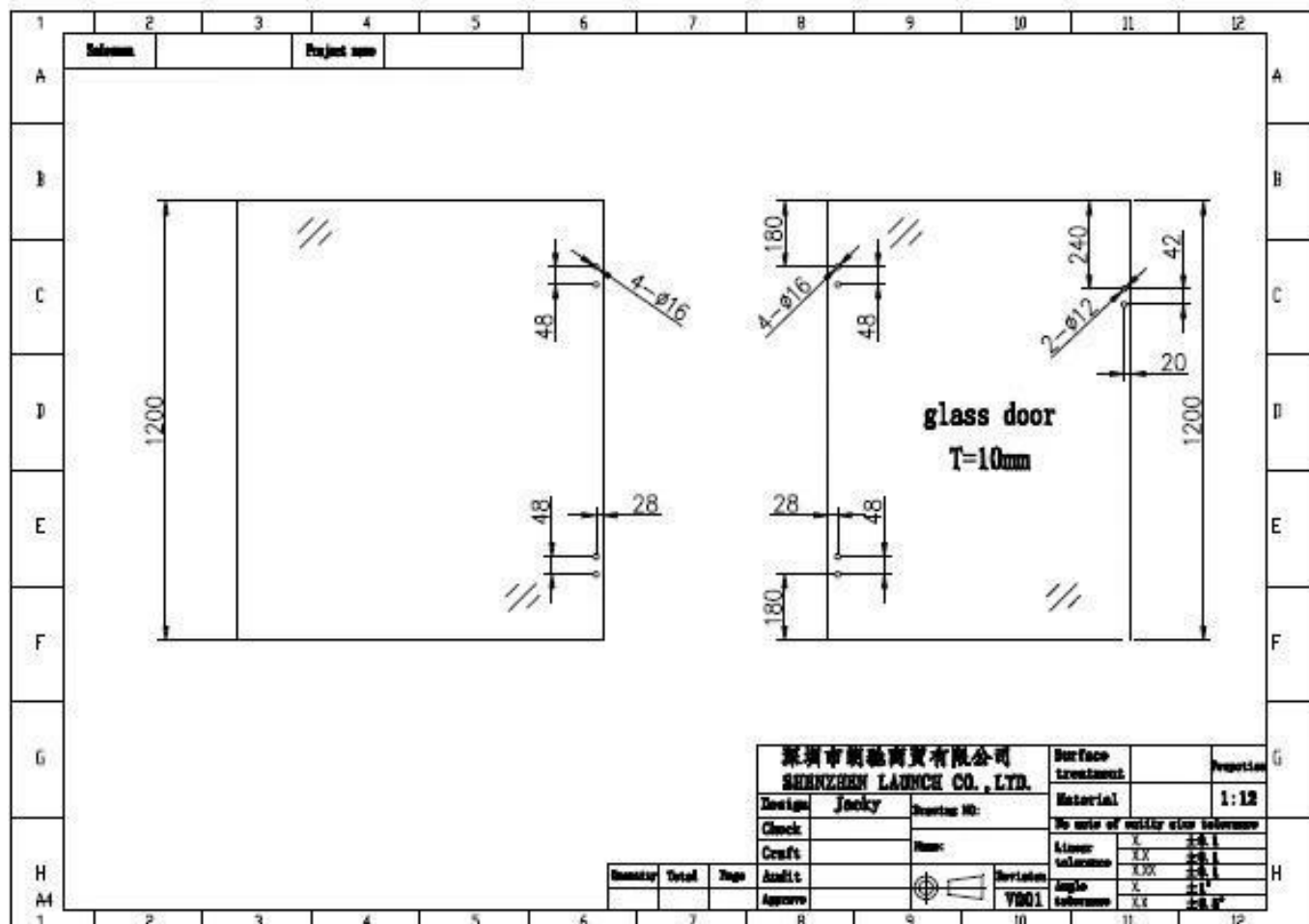
pool fencing spring loaded stainless steel 316 glass door hinge installed





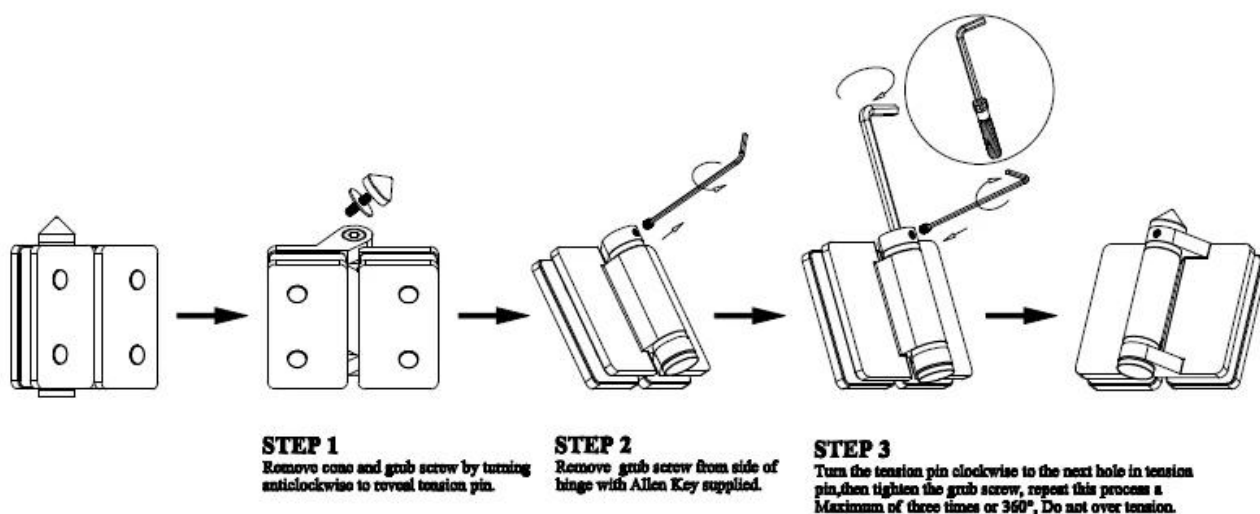
glass door hinge standard glass panel holes position drawing





Stainless steel 316 pool fence glass door hinge installation instruction:

## Instructions for adjusting tension on Glass to Glass hinge



Packing:





#### FAQ

1. Are you factory?  
Yes, we are factory.
2. Do you offer free samples?  
Yes, we offer free samples, but customers need to pay express charges.
3. What materials do you have?  
We have the material of stainless steel 304, 316, 316L and Duplex 2205.
4. What is your MOQ?  
MOQ of order required is 1 pc.
5. What kind of payment do you accept?  
We accept the payment of T/T, LC, PayPal, West Union, etc.
6. What is your payment term?  
Our payment term is T/T(100% or 30/70) or LC at sight .
7. What is your delivery time?  
Our delivery time is from 5days to 30days base on your quantity.
8. Do you offer OEM & ODM service?  
Yes we offer OEM&ODM service.
9. Do you offer after-sales service?  
Yes, we offer after-sales service. Any complaint for orders will be dealt with in time within 12 hours.

Contact us for more information now☐

**Eve**

**Email:** [sales03@launch-china.cn](mailto:sales03@launch-china.cn)

**Skype:** launch\_03

**HP/WhatsApp/WeChat:** +8613686807796