

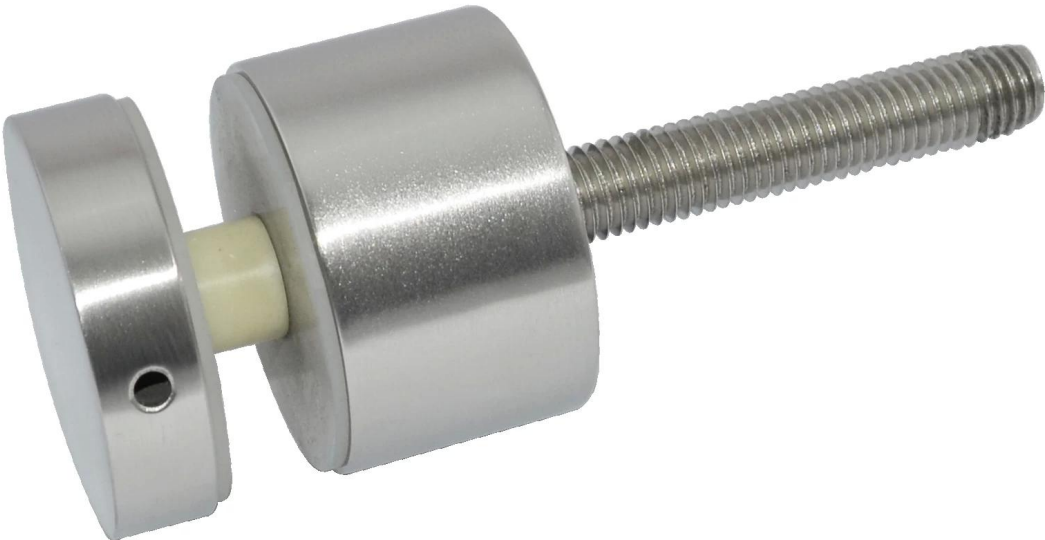
**Glass standoff pin** is used as the glass holder at the edge of the balcony, staircase, steps, terrace, deck etc by holding the glass stand and stable.

The advantage of this product is modern design, clear view, higher class and stable safety. You will see from the picture below:



SF-50

Satin and mirror finish:





Wood screw:



Installation method:

With hole on the glass, can be installed on the concrete or wood

Installation area

Indoor/outdoor balcony, terrace, staircase, steps, pool, sea side etc

Project

Terrace and deck:



Staircase:



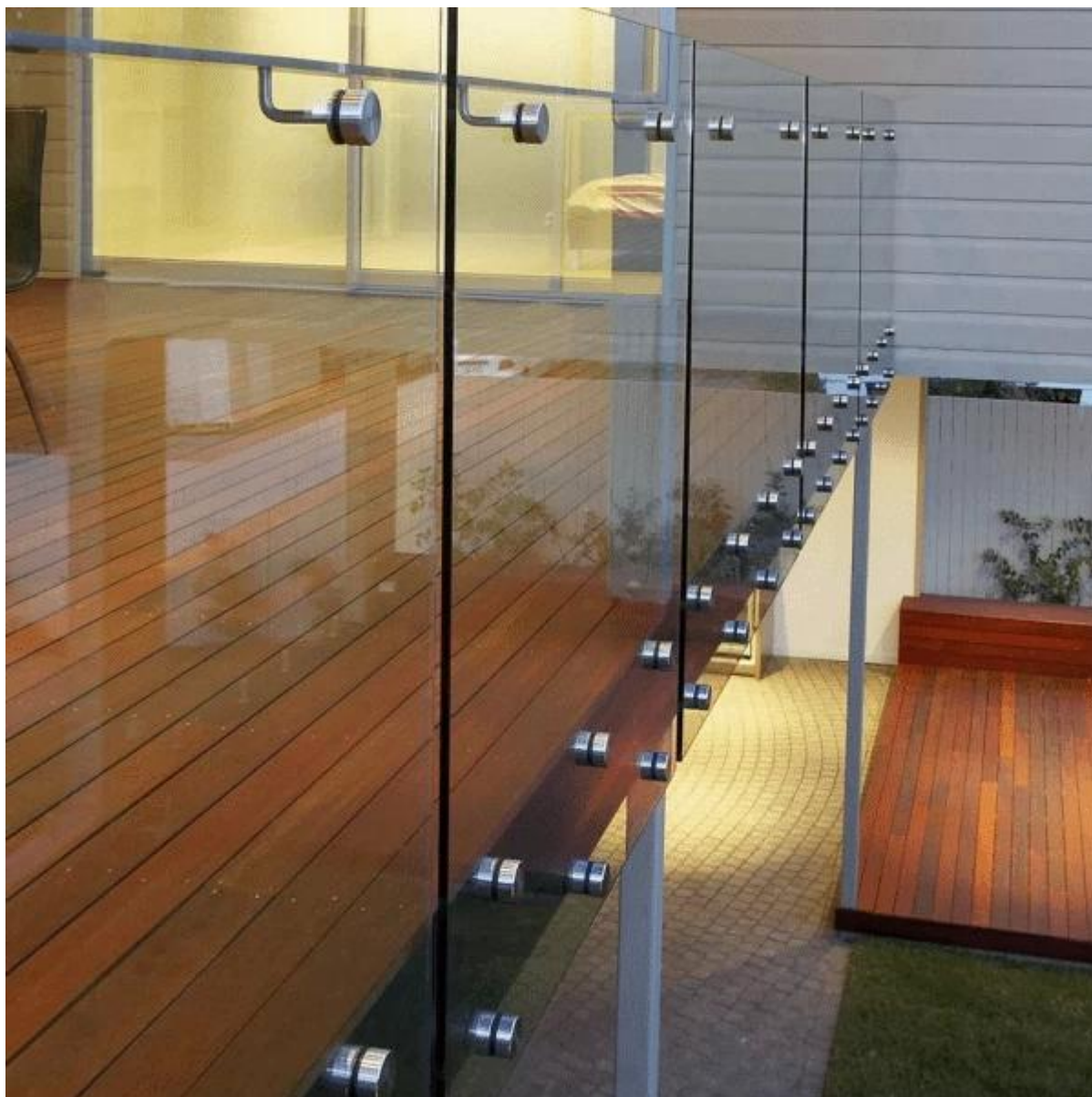






Balcony





Package:  
Each one in plastic or foam bag;  
16pcs in a carton box;

