

Large 2" Diameter Heavy Duty adjustable Stainless Steel Glass
Standoffs for frameless standoff glass railing systems .

Features of 2" Diameter Heavy Duty adjustable Stainless Steel Glass Standoffs -

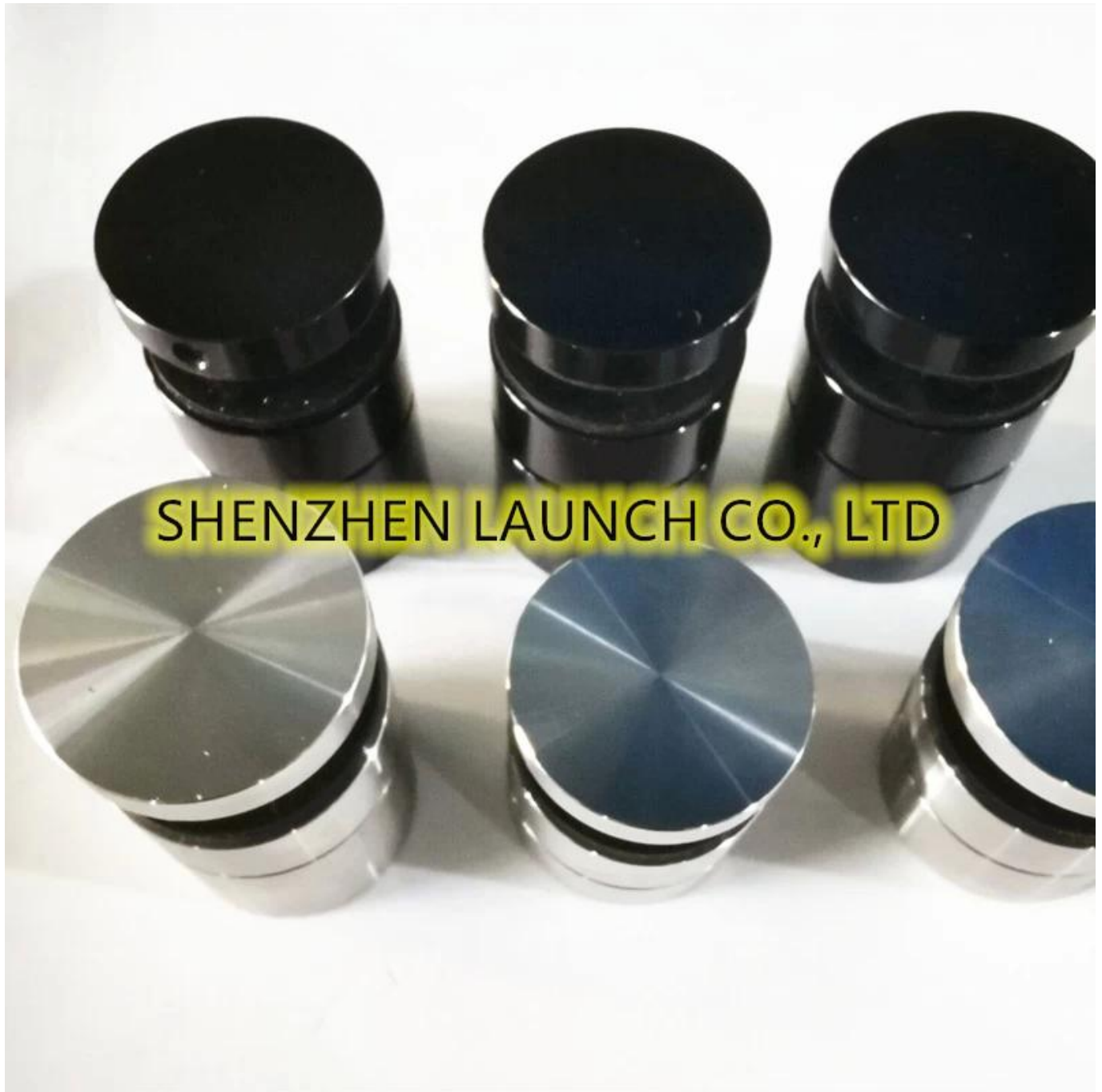
1. adjustable wall to glass distance
2. Material can be SS304 & 316 & 316L
3. Finish - satin , mirror , black , machined finish
4. 38mm diameter / 50mm diameter
5. concrete bolt or wood screw

Photos of 2" Diameter Heavy Duty adjustable Stainless Steel Glass Standoffs -

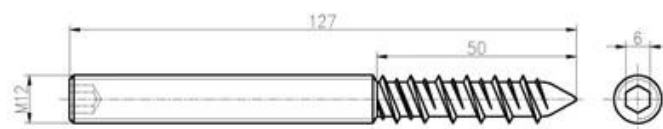
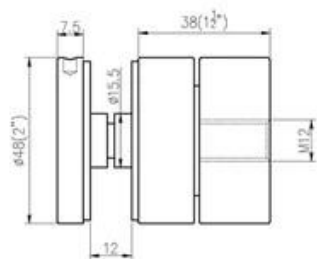




SHENZHEN LAUNCH CO., LTD



Drawings for different sizes of 2" Diameter Heavy Duty adjustable Stainless Steel Glass Standoffs -







More designs of stainless steel glass standoffs available -



Part No.	Material	Finish	Body	Bolt size
<ul style="list-style-type: none"> SF-30 SF-40 SF-50 SF-50A 	<ul style="list-style-type: none"> AISI 304 AISI 316 	<ul style="list-style-type: none"> Satin Mirror 	<ul style="list-style-type: none"> 30x10; 30x25mm 40x10; 40x30mm 50x12; 50x30mm 50x12; 50x50mm silicon rubber gasket included 	<ul style="list-style-type: none"> M10x120 bolt M10x72 wood screw M8x100 bolt M8 x72 wood screw



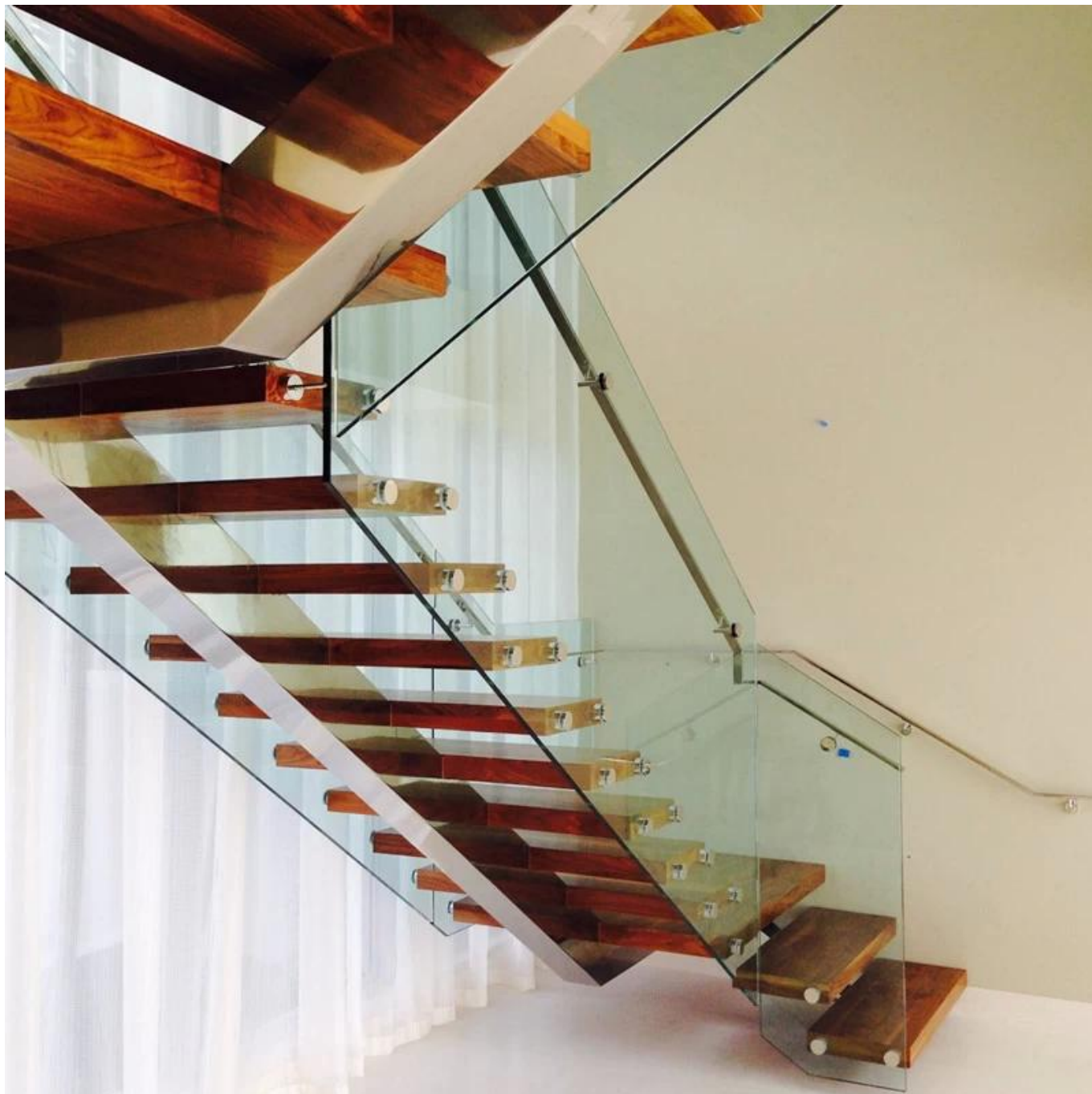
Part No.	Material	Finish	Body	Bolt size
<ul style="list-style-type: none"> SF-38Z 	<ul style="list-style-type: none"> AISI 304 AISI 316 	<ul style="list-style-type: none"> Satin Mirror 	<ul style="list-style-type: none"> hollow type 38x7.5;38x38mm silicon rubber gasket included 	<ul style="list-style-type: none"> M8x70 hexagonal screw



Part No.	Material	Finish	Body	Mounting plate size
<ul style="list-style-type: none"> SF-50T 	<ul style="list-style-type: none"> AISI 304 AISI 316 	<ul style="list-style-type: none"> Satin Mirror 	<ul style="list-style-type: none"> 50x10;50x30mm silicon rubber gasket included 	<ul style="list-style-type: none"> 200x100x10mm

Frameless glass balustrade Railings with 2" Diameter Heavy Duty adjustable Stainless Steel Glass Standoffs -





Shenzhen Launch Co., Ltd

Verified by SGS , Report No. 19536352_P+T

Office add:

B5-003, 5/F-Block 3, Yilida Building, No. 1092 Nanshan Road, Nanshan District, Shenzhen , China , postal code 518054

Tel: 86-755-86037559 Fax: 86-755-86372611

MOB (WhatsApp, Wechat, Viber) +86 135 9027 3543

Factory add :

1st floor , Building A , Ruixin Hengye No.3 industrial area, Taixing Road, Shigu Town, Tangxia district , Dongguan

Email . sales01@launch-china.cn