

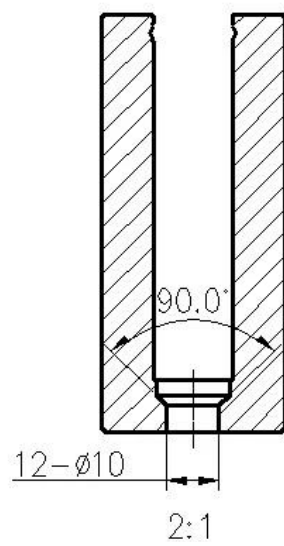
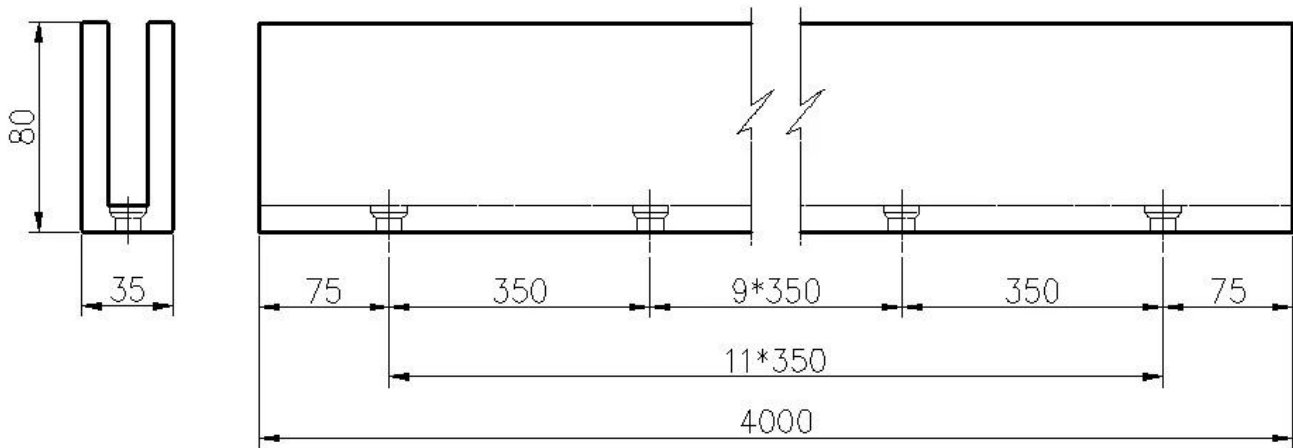
Low Price Glass Railing Aluminum Profile U Base Channel

Product Description

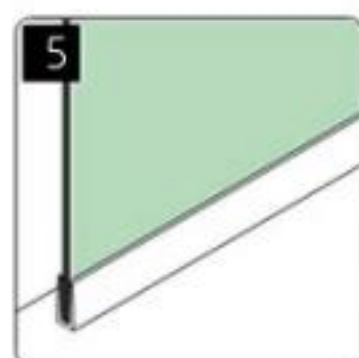
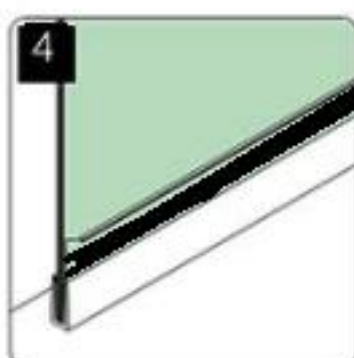
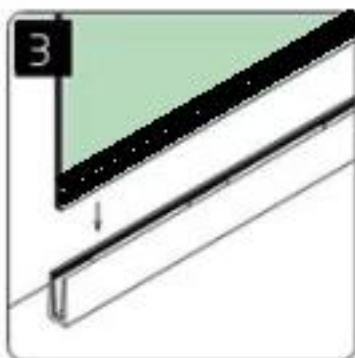
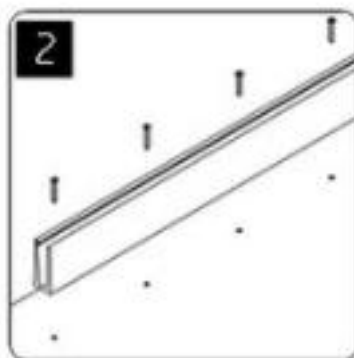
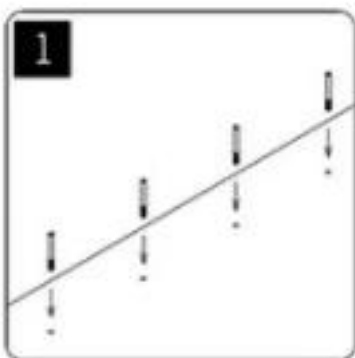
Product Name	Low Price Glass Railing Aluminum Profile U Base Channel
Material	Aluminum 6063 T5
Finish	Anodizing / powder coating
For Glass Thickness	10-12mm glass
Length	4m per length or customer's length
Sold as a kit	Including rubber channel and expansion bolts
Mounting	Floor mounting or core drill mounting
Size	35x80mm
Packaging Details	Bubble bag - carton - pallet
Application	Pool fence/balcony/deck/stairs U channel glass railing
Factory Inspection	Available
Sample	Available
MOQ	One piece. You can order as per your job requirement.
OEM & ODM Service	Available

Aluminum U channel Details

1) Glass railing aluminum U-channel drawing and installation



installation



2) Glass railing aluminum U-channel details

A. Glass railing U channel for 10-12mm glass

u channel: 25*80mm
rubber channel: 15*70mm

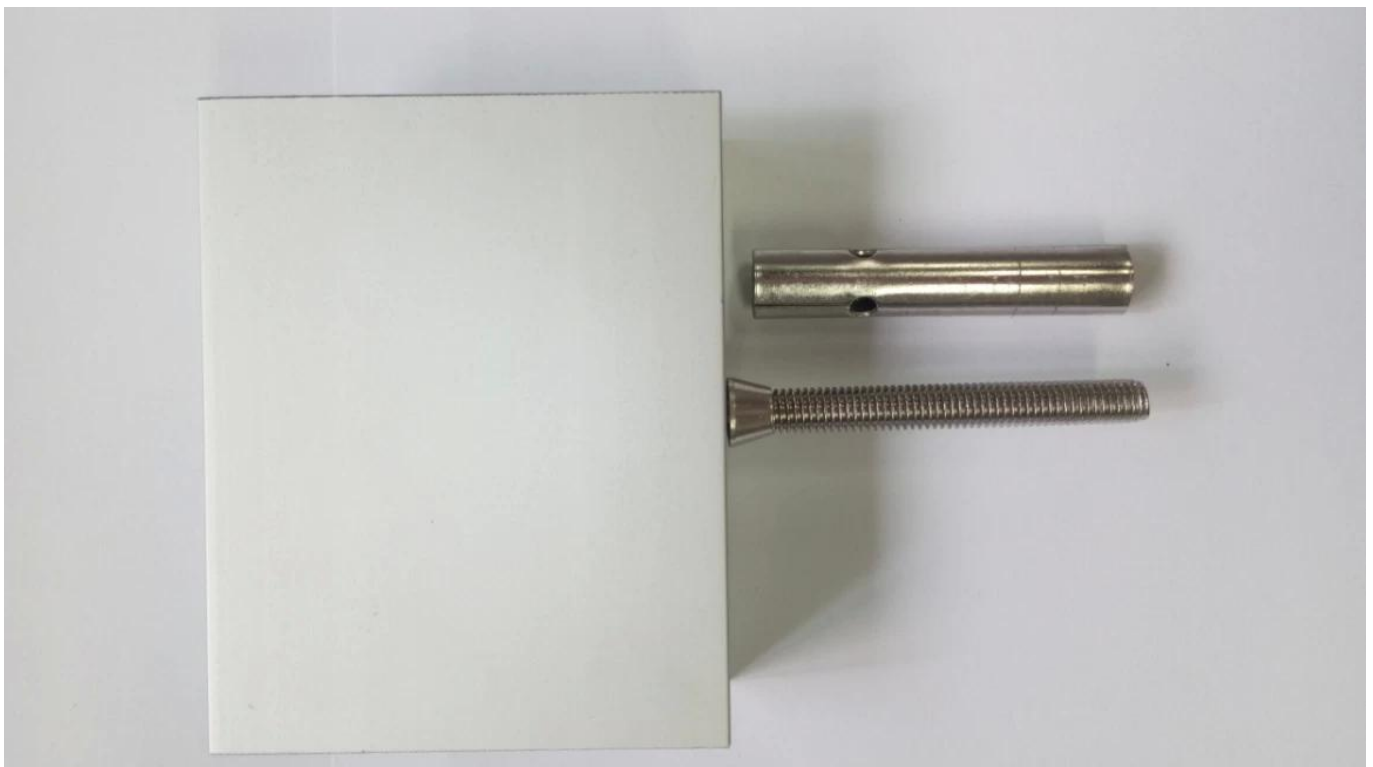


A set of U channel:
-aluminum channel
-rubber channel
-screws fixing into ground

bottom view

top view

side view



Glass Railing Aluminum Profile U Base Channel Safety Package

Or packing as customer's requirements.



Glass Railing U-channel Projects





Related Products

Stainless steel removeable top hand rail cover:



**Dia25.4mm slotted handrail tube
14x14mm groove**



180 degree joiner



90 degree joiner



wall-rail joiner



end cap

25x20mm slotted handrail tube
14x14mm groove



180 degree joiner



90 degree joiner



wall-rail joiner



vertical adjustable joiner



horizontal adjustable joiner



end cap

FAQ

1.what material do you have ?

SS304, SS316, SS316L, duplex 2205, ect.

2.Can you send me your whole price list ?

Sorry, as the price related to many factors, such as quantity, material type, surface treatment and so on, we will offer you exact quote after we confirm your detailed requirements.

3.Do you offer OEM & ODM service ?

Yes, we can make the products according to your technical drawings or samples. We are professional in investment casting, die casting, stamping, CNC machining, etc.

4.What kind of payment you accept ?

T/T, L/C, PayPal, West Union, etc.

5.What is your payment term ?

T/T (30/70) or L/C at sight.

6.What is your delivery time ?

Within 5 workdays for hot-sale items. 15-25 workdays for bath orders.

7.Do you offer after-sale service ?

Of course, any question after you purchase our products, we will get back to you within 24 hours.

Contact Us for More Details:

-Contact: Eve Zhou

-Skype: launch_03

-Email: sales03@launch-china.cn

-Mob/whats APP: +8613686807796