

Low Price Stainless Steel Railing Spigot 316 Glass Mini Post

Product Name	Low Price Stainless Steel Railing Spigot 316 Glass Mini Post
Material	Stainless Steel 316/2205
Sizes	50x50x160/50x50x180/280x50x50mm etc or as your request
Surface treatment	high satin/mirror polished/ black matte
Consist	square/round base plate spigot, square/round cover plate, grub screws, one black rubber spacer, one pressure plate
MOQ	10 pcs
ODM& OEM	Accept
Delivery time	10-15 days after deposit received
Delivery term	by ship, by air or by express

Features:

Duplex 2205 Stainless Steel

Highly polished Mirror Finish (to 8K grit)

Deck Mount or Core Drill in Round or Square styles.

Includes Stainless Steel Cover Plate

Tested and approved to Australian Standards for both pool fencing and balustrading.

Holes are not required to be drilled into the glass as a friction clamp system is used

The internal compression plates of the spigot tighten to clamp the glass panels firmly and securely.

Made specifically to fit 10mm -12mm thick glass

Products details

Model: RCM

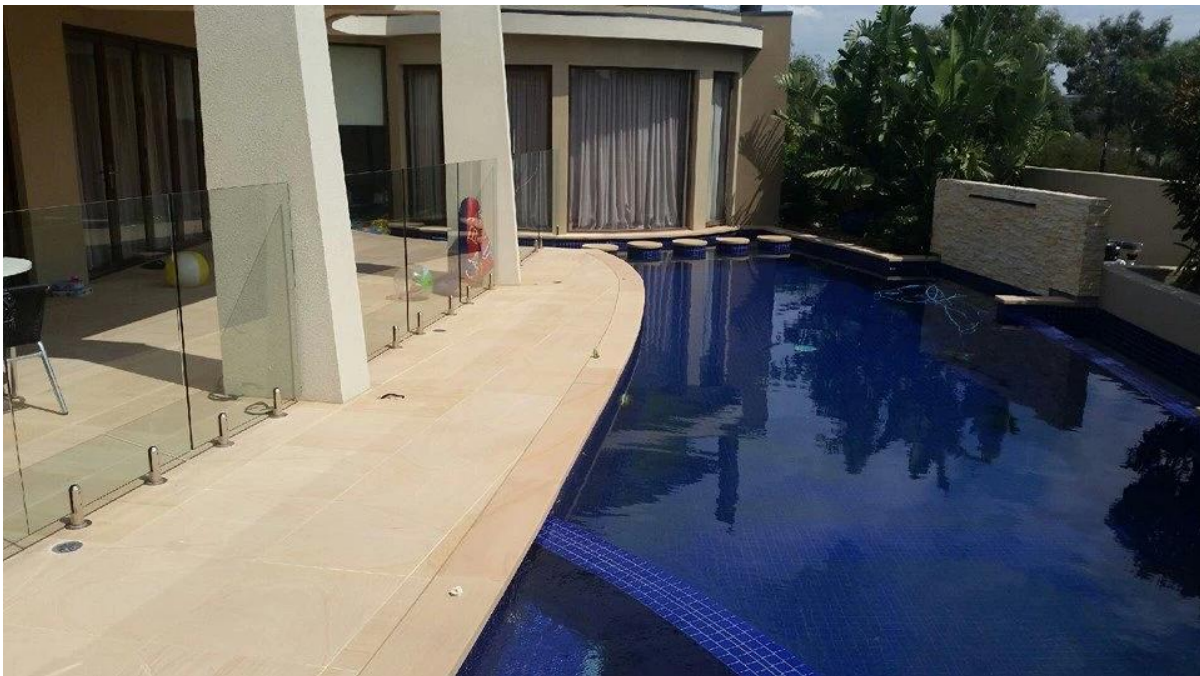


Mirror polished



Satin brushed

Project photos





Strength test report

Results Summary

(For details of individual tests, refer to the tables on the following pages.)

ID	Item/Heat No.	Dimensions/Type/Details	Finish	Overall Assessment
14117/01	SSBM316	180mm High, 50mm Square, Base Plate 316 Stainless steel	316L	COMPLIES

Remarks

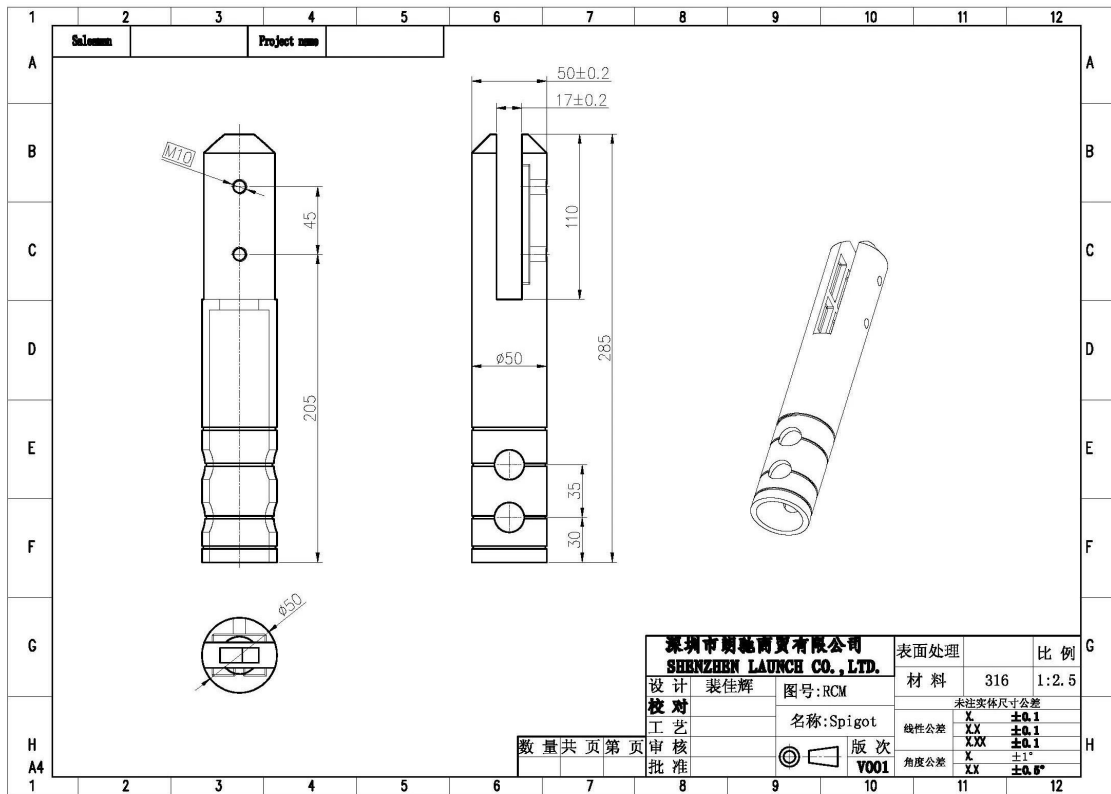
After completion of the testing, the spigot was found to be in sound condition with no breakage, tearing or signs of fracture and no looseness of the fixings.

Colin Lorrimar
Metallurgical Testing Manager



Accreditation No. ~~14117~~ 14117
Accredited for compliance
with ISO/IEC 17025

Drawing



Certification



Shenzhen Launch Co.,Ltd



www.launch-china.cn

Please contact us for further information:

Eve

Email: sales03@launch-china.cn

HP/WhatsApp: +8613686807796