

Matt Black Stainless Steel Slimline Handrail Mini Top Rail

1. 25mm x 21mm Nanorail Mini Rail Stainless Steel Slimline Handrail specifications :

- Material: Stainless steel 316L
- Finished: Brushed or Mirror polished
- For glass thickness usually used for 10 - 13.52mm
- Dimension: 25mm Wide x 21mm High Rectangle Tube with a 14x14mm slot along the bottom to sit directly into the glass.
- The Tube is available in both 2900mm and 5800mm lengths.
- Fittings available include:

Straight Joiners







90 Degree Joiners

Adjustable Horizontal Joiners

Adjustable Vertical Joiners

End Caps

Wall Plates

| | | | | | |
|---|----------------|--|---|------------------------|--------------------|
| Square Shape Top Rail Fittings | MSQC180 | Square 180 degree connector |  | stainless steel 316 | Mirror polished |
| | MSQC90 | Square 90 degree connector |  | | |
| | MSQCW | Square wall to rail connector |  | | |
| | MSQCAP | Square end cap |  | | |
| | MSQC90 - A1 | Vertical, Up/Down adjustable connector |  | | |
| | MSQC90 - A2 | Horizontal, Left/Right adjustable connector |  | | |

21*25mm slot handrail

5.8 m per length



180 degree joiner



90 degree joiner



Vertical adjustable joiner



Horizontal I adjustable joiner



Wall to handrail joiner



End cap

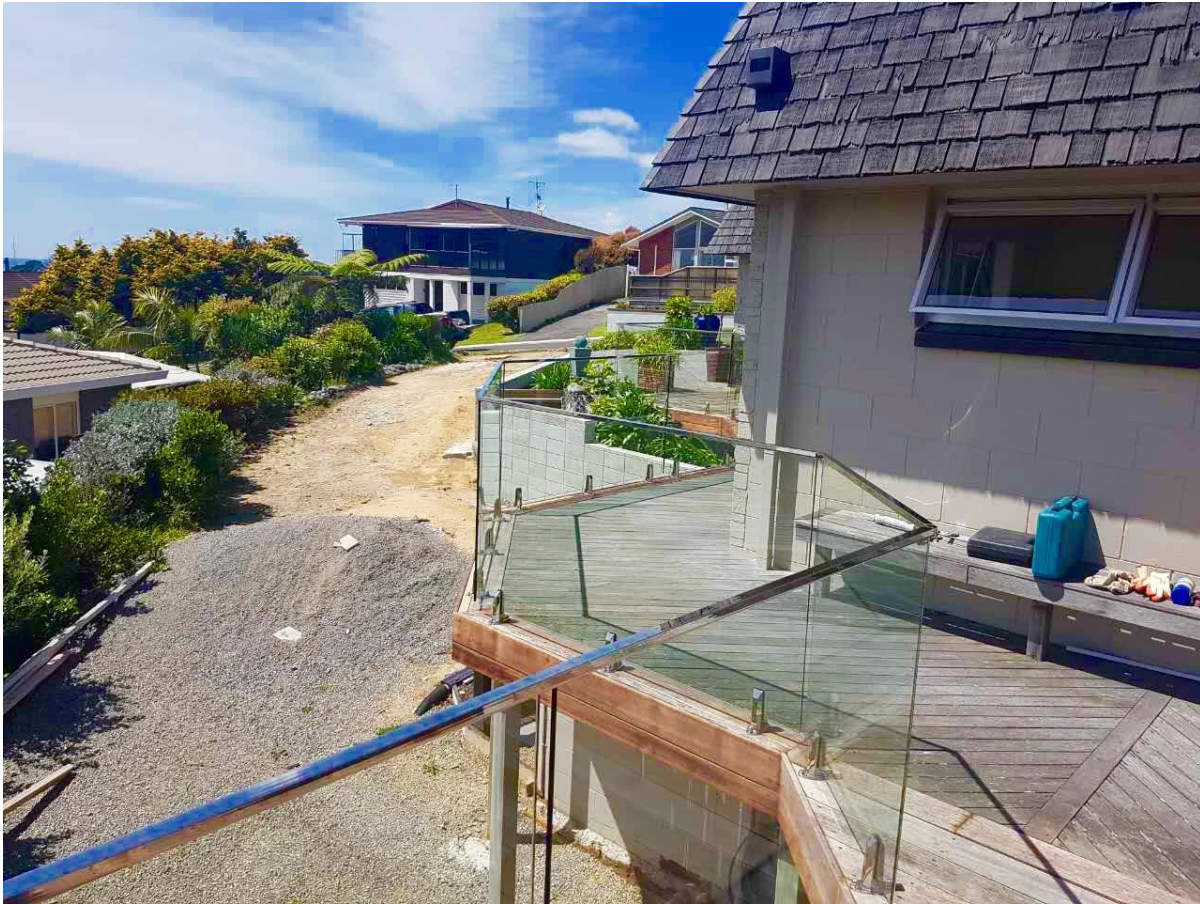




2. Also, Mirror Polished & Brushed finished 25mm x 21mm, Diameter 25.4mm Nanorail Mini Rail Stainless Steel Slimline Handrail available :







3. Packaging :

1).Cardboard Tube Packaging

Each piece slot handrail covered with plastic sleeves, then put into a cardboard tube, 5 pcs into a bundle.



2).Bubble Bag Packaging

Each piece slot handrail covered with plastic sleeves, then 6 pcs with woven bag packed into a bundle, then the bundle repack with outer bubble bag.





Any interest, please contact with me freely :

Email: sales05@launch-china.cn .

