

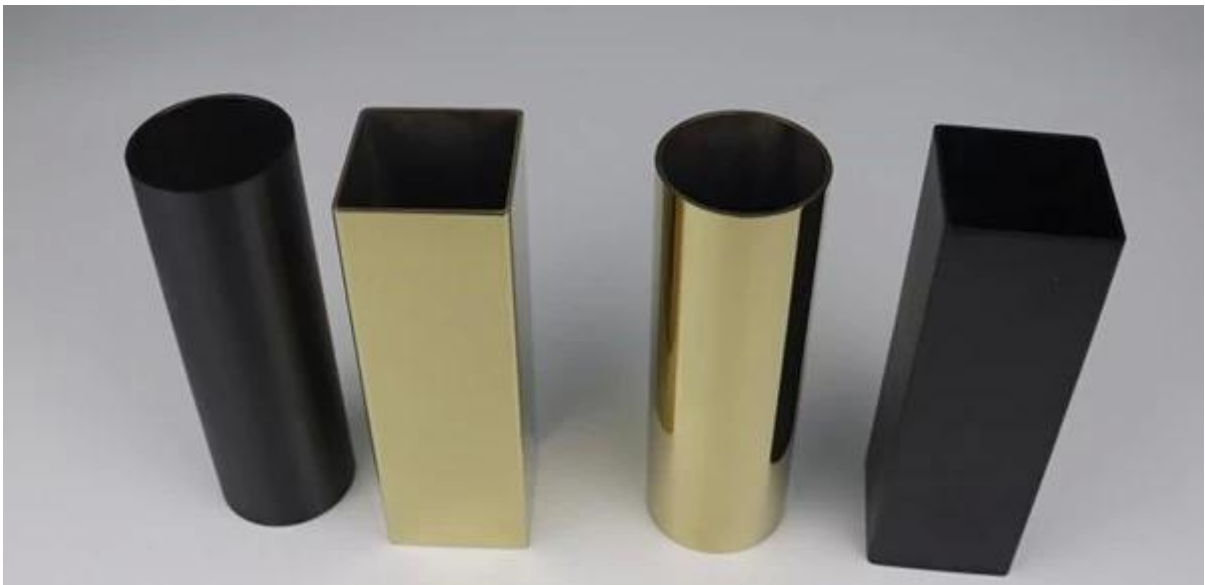
Mirror Polished Finish Stainless Steel 316L Tube Handrail Tube

Stainless steel tube description

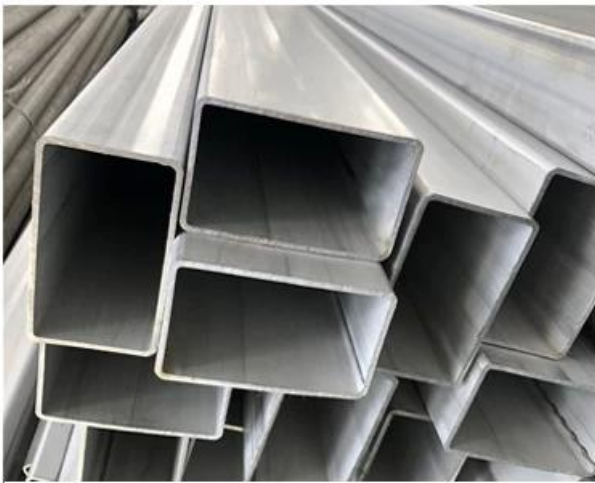
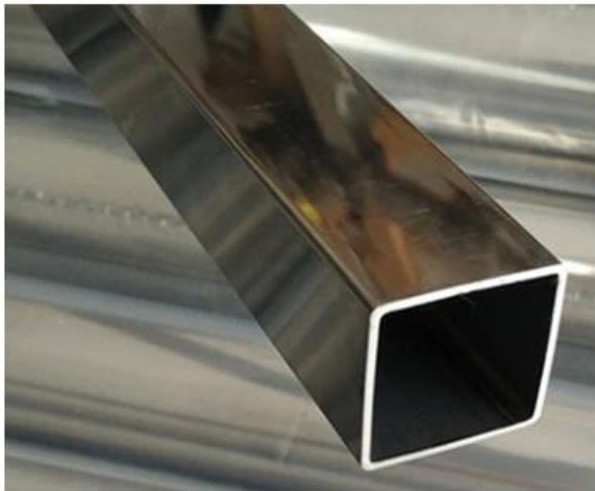
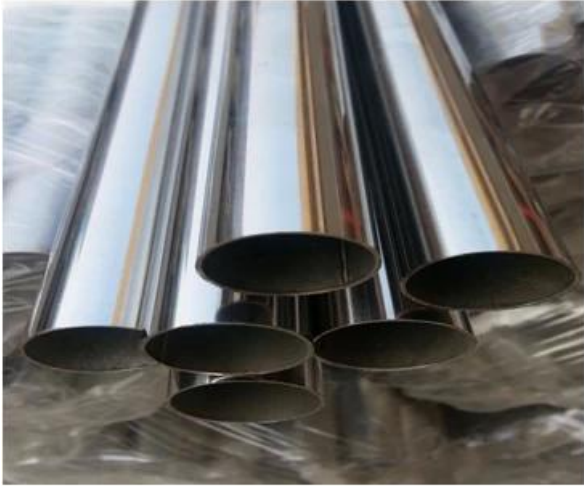
Product Name	Mirror Polished Finish Stainless Steel 316L Tube Handrail Tube
Material	Stainless steel 304/316L
Finish	Mirror polished or satin brushed or black matt or gold
Standard Length	5.8m per length, or customers' length
Tube/pipe Types	1) Square stainless steel tube/pipe 12/25.4/31.8/38.1/42.4/50.8mm diameter or customized 2) Round stainless steel tube/pipe 38*38/40*40/50*50/50*10/50*25mm or customized
Application	Balustrade handrail tube, stainless steel railing, stainless steel post, glass railing handrails
Minimum Order Quantity	No limited. Customer can order as per job requirements.
Sample	Available to check quality before order
Factory Inspection	Available
Packaging	Bubble bag - cardboard sleeve - metal frame
Certified	Yes
OME & ODM Service	Available

Stainless steel tube photo

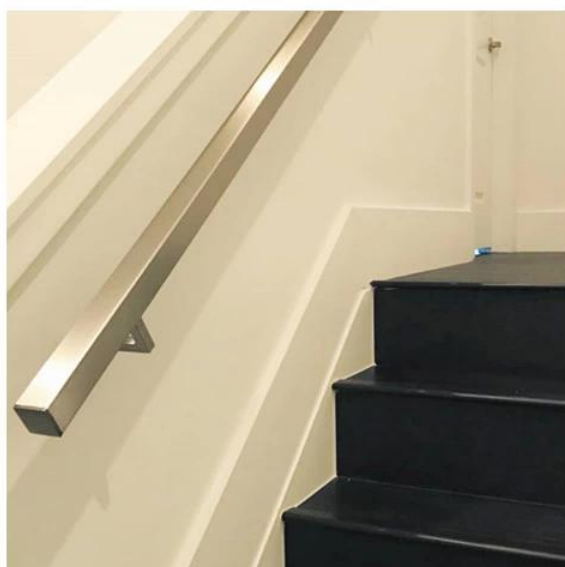
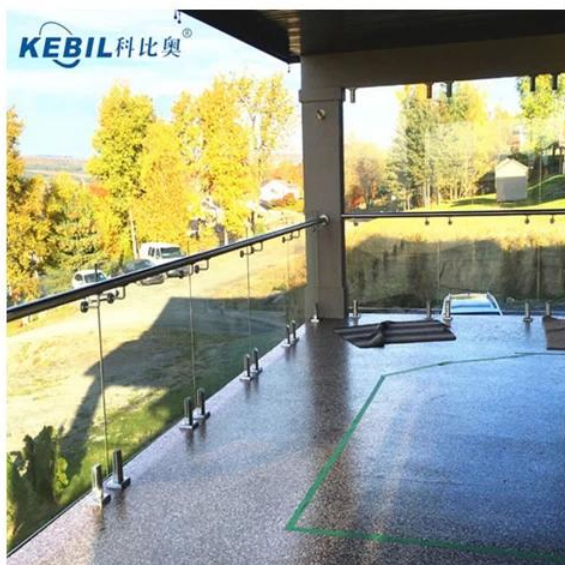




Stainless steel tube production



Stainless steel tube application



Contact details:

Wendy: sales04@launch-china.cn

Phone/whatsapp/WeChat: 0086 15989339827