

Model No.SCM stainless steel 316 core drill glass spigot for pool fencing glass railing

Frameless Glass Clamp Railing System

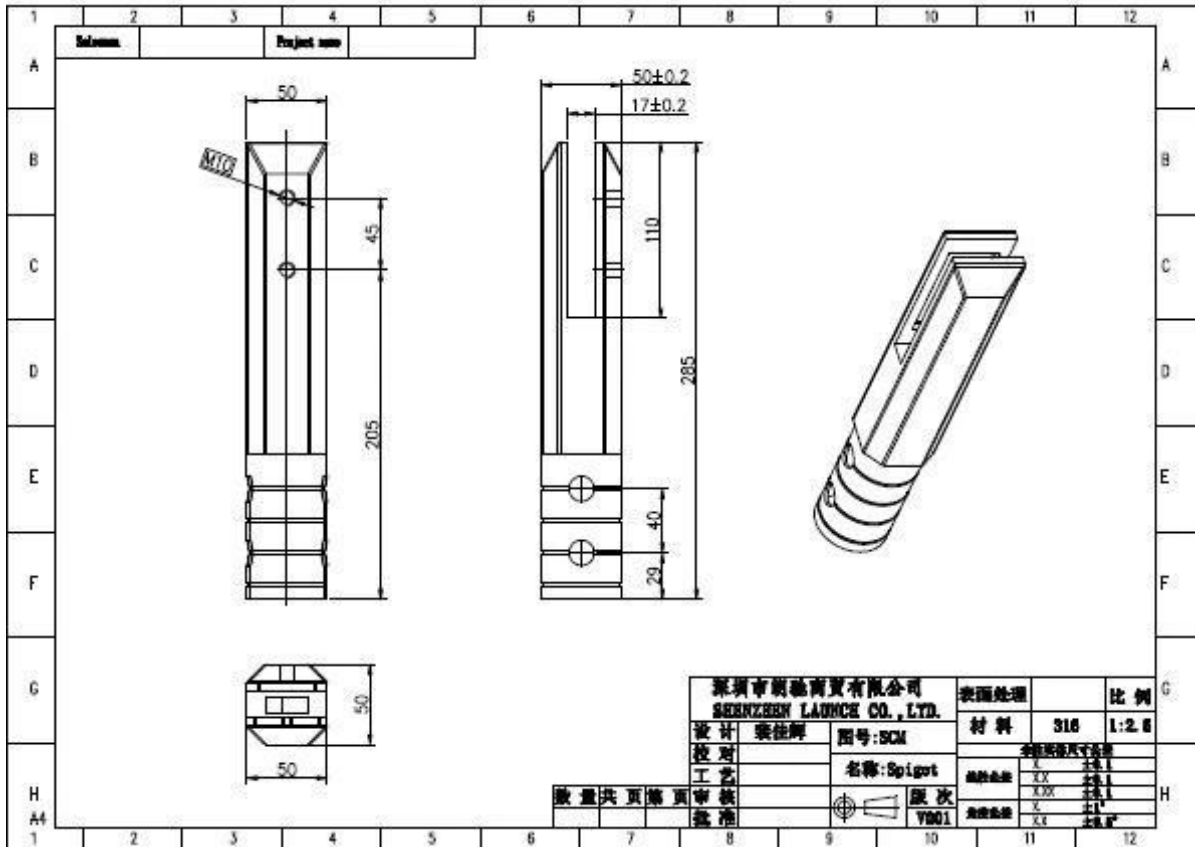
- 1). For 3/8", 1/2", and 9/16" (10-13.52 mm) glass
- 2). For Pool Fencing, Balcony, and Deck Applications
- 3). Our Frameless Glass Clamp Railing System provides an almost invisible "frameless" look. No vertical posts are used between the panels of glass; they are solely supported from the bottom by high strength stainless steel clamps. Their quality 316 alloy stainless steel construction provides superior weather resistance.

1. Model No.SCM stainless steel 316 core drill glass spigot for pool fencing glass railing specification,

1. Material: Stainless steel 316/duplex 2205.
2. Finish: Brushed or Mirror polished.
3. For glass thickness: 10-13.52mm.
4. Model No. SCM: Round core drill spigot.



SCM



2. Model No.SCM stainless steel 316 core drill glass spigot photos,



2014/03/19

SCM/RCM:3005x280x130mm



RBM

SBM

RCM

SCM





Thanks for your visit, Any interested or needs, please contact with me freely :

Joey Lan

Shenzhen Launch Co., Ltd

www.launch-china.com www.launch-china.en.alibaba.com www.chinabalustrade.com

Email: sales02@launch-china.cn .

Skype: launch-02 . Office: 86-755-86037559 .