

Product Description

1. Grade: SUS316, SUS316L, DUPLEX2205
2. Glass thickness: 10mm - 13.52mm
3. Finish: Satin brushed or mirror polished
4. Certification: ISO9001, CCC

Product Name: **New deisgn stainless steel pool fence clamp glass fence spigot**

Material: stainless steel

Model number: SBM

Type: Square

Mounted: Flooring

Application: Frameless Fencing & Balustrade

Products Show:

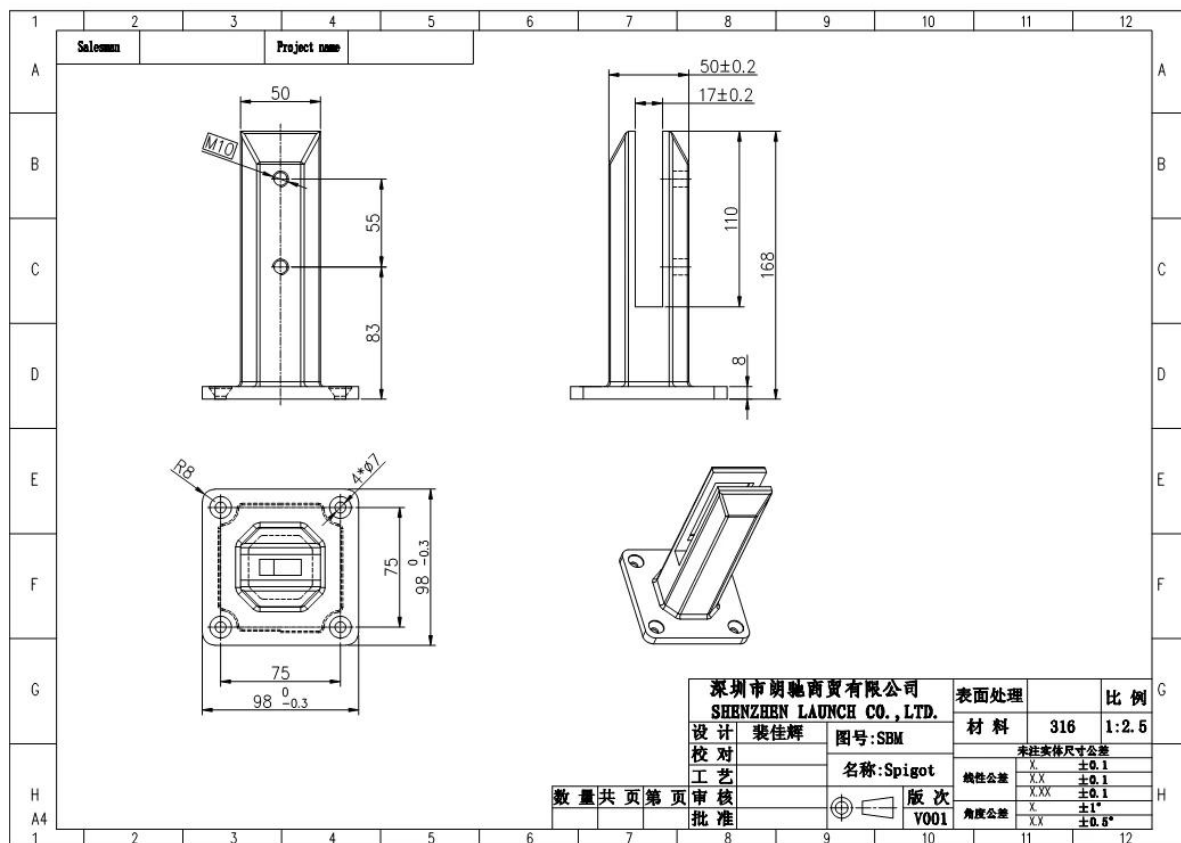
[Satin-brushed:](#)



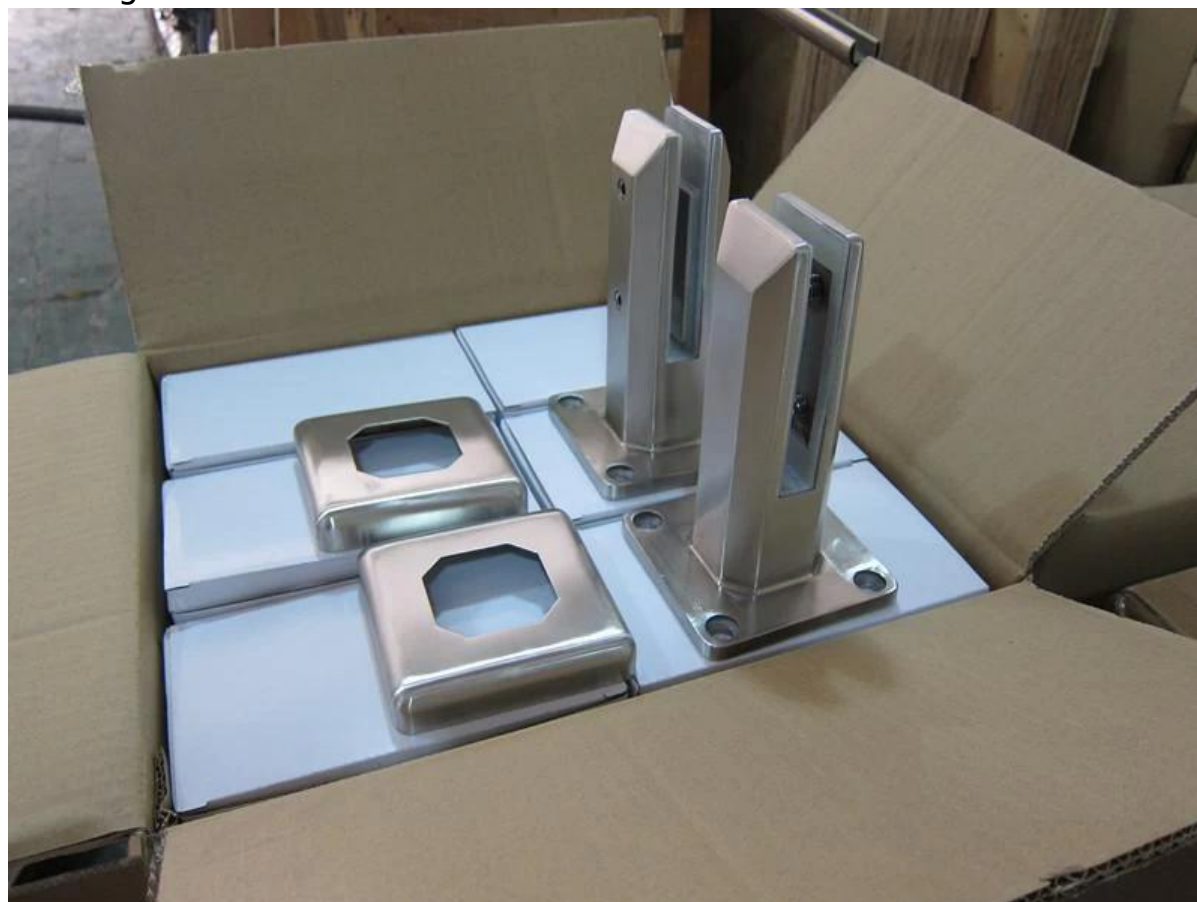
Mirror polished:



Drawing:



Packing:



Project photos:

SBM in Mirror finish:



SBM in Satin finish:



Packing & Delivery
Packing Details :

1. Each spigot is wrapped with plastic film and air bag, and then put in a carton.
 2. 100 spigots are packed in one bog plywood case.
 3. Also can be packed as clients' requirements.
- Delivery Details : 10-15 workdays after payment.

Our Certifications







Shenzhen Launch Co.,Ltd









www.launch-china.cn

Contact:

Email: sales03@launch-china.cn

Mobile: +8615907334556

Eve Chow

Sales representative

M : +86 159 0733 4556

T : +86 755 8603 7559

E : sales03@launch-china.cn

A : B5-5003, Yilida Bldg, Nanshan District, Shenzhen