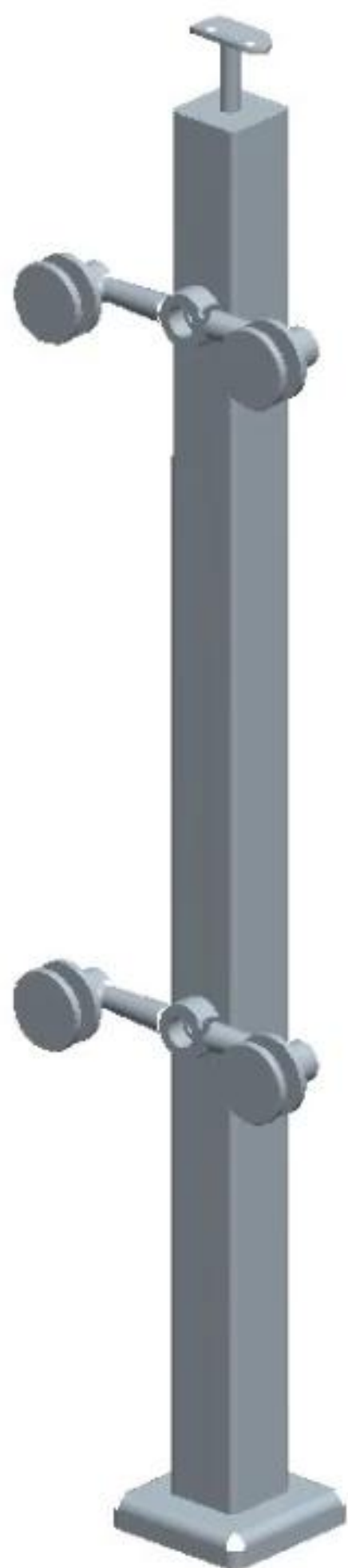


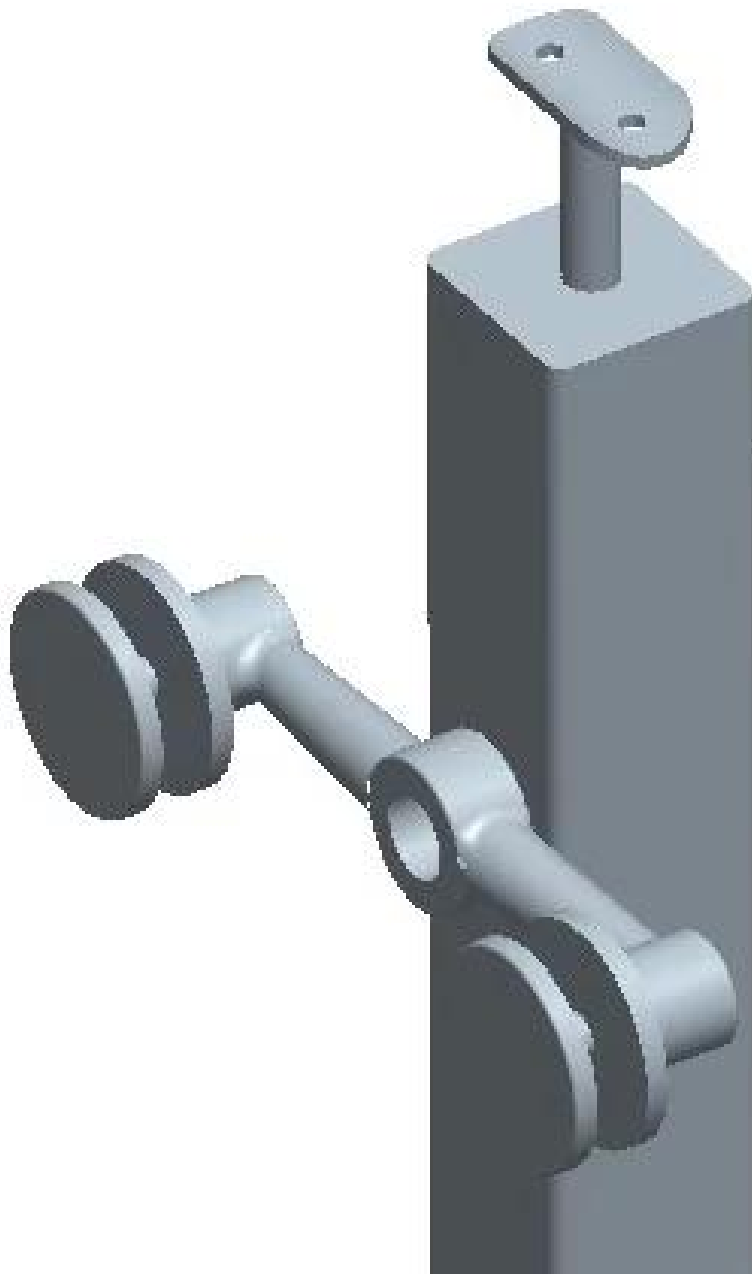
1.Description

- Balustrade post for balcony, backyard, deck, staircase glass railing
- Round post size: $\phi 43\text{mm}$ or $\phi 50.8\text{mm}$, 1100mm high
- Square post size: $40\times 40\text{mm}$ or $50\times 50\text{mm}$, 1100mm high
- Glass clamp can be mached according to glass thickness.(Normally 8-12mm glass)
- Stainless steel 304 is for indoor use. stainless steel 316 is for outdoor use
- Base plate diameter: dia100
- Fixing into concrete post is available (Normally glass height is 1100mm. If $\neq 1100\text{mm}$, we suggest to fix into ground)

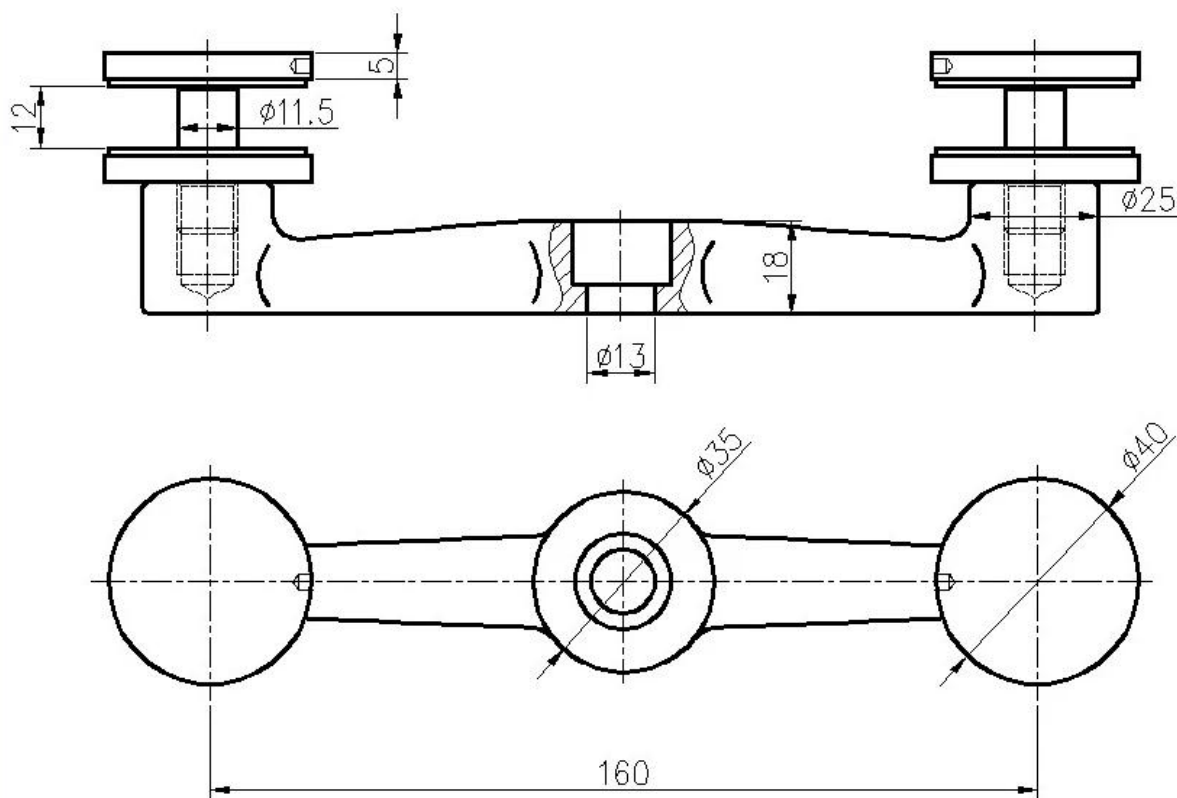
2. Product picture

New desigen spider balustrade post





Drawing



Glass balustrade post catalogue

KEBIL 科比奥 SHENZHEN LAUNCH CO., LTD

BALUSTRADE POST

Crossbar balustrade post

Material	Stainless steel 304/316
Finish	Satin / mirror polished
Post size	43mm or 50.8mm
Standard height	1000 mm, or as per your requirement

Glass balustrade post

Material	Stainless steel 304/316
Finish	Satin / mirror polished
Post size	43mm or 50.8mm, 40*40mm or 50*50mm
Standard height	1000 mm, or as per your requirement

Model No. : LCH-120

Glass standoff balustrade post

Material	Stainless steel 304/316
Finish	Satin / mirror polished
Post size	40*40mm or 50*50mm
Standoff bracket size	43mm
Standard height	1000 mm, or as per your requirement

Model No. : LCH-122

Glass spider balustrade post

Material	Stainless steel 304/316
Finish	Satin / mirror polished
Post size	40*40mm or 50*50mm
Standard height	1000 mm, or as per your requirement

Model No. : LCH-123

Cable balustrade post

Material	Stainless steel 304/316
Finish	Satin / mirror polished
Post size	43mm or 50.8mm
Standard height	1000 mm, or as per your requirement

Model No. : LCH-124

Cable balustrade post

Material	Stainless steel 304/316
Finish	Satin / mirror polished
Post size	50*10 mm
Standard height	1000 mm, or as per your requirement

07/08

3.Project show

--balcony railing



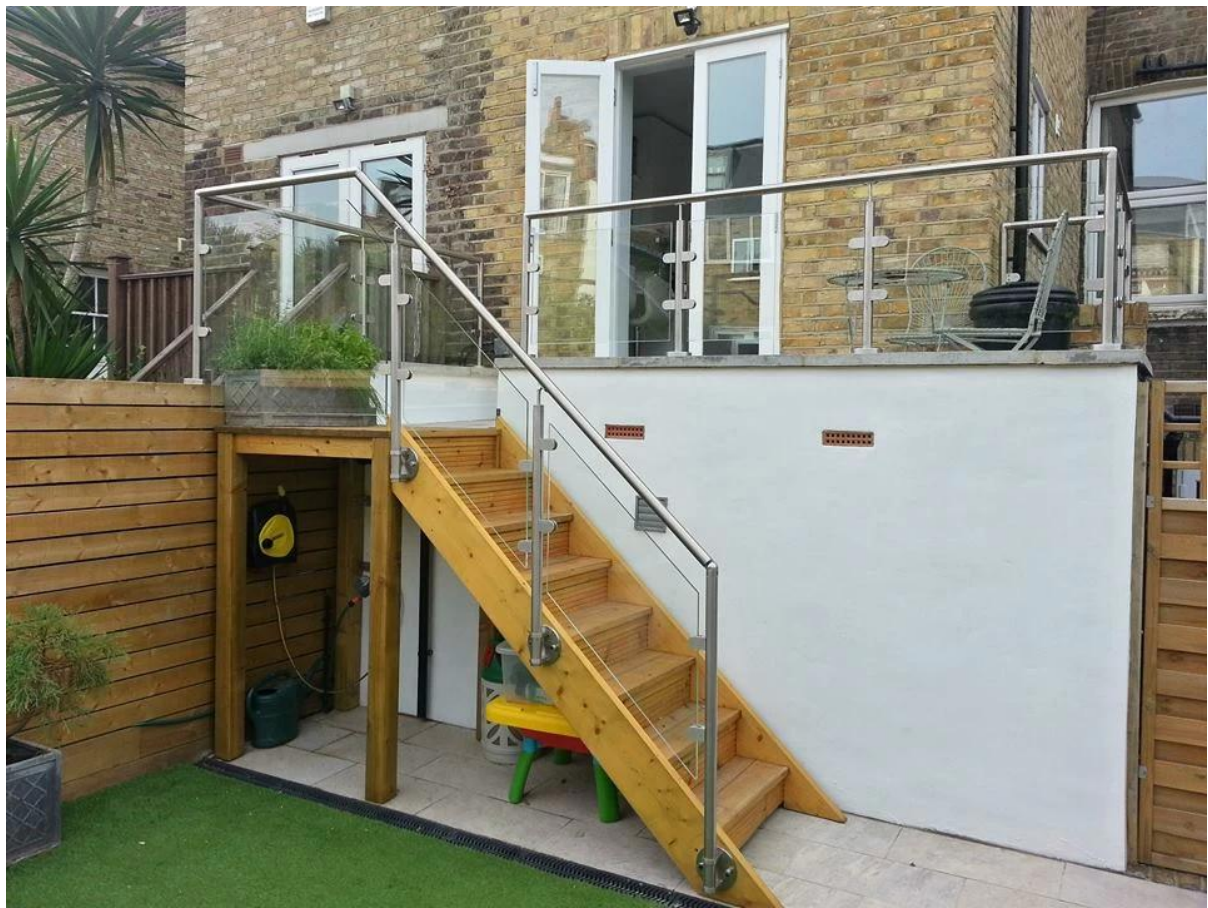


--staircase railing









--deck railing







side mounted post



More beautiful project pictures, go [here](#).

3.Details





4.Delivery & Packing

Delivery: 3-5 days by express. 10-15 days by shipping









Packing: one pc into one plastic bag, then into one box.

Lead time: about 20 days after payment. (It depent on quantity)







packing	plastic bag+box+carton
production lead time	30-45 days ; also depending on your qty.
Shippment	 
	 
	 
payment	 

5. Factory & Certification





6. Customers





**build &
renovating
expo**

Friday 4 July - Sunday 6 July 2014
Melbourne Exhibition Centre



7.Contact



董 萍 Doris Dong

Senior Sales Representative

☎ (86) 135 3050 6265

深圳市南山区南山大道1092号亿利达大厦B区3栋5003

Room 5003, Building 3, Yilida Building, No.1092
Nanshan Road, Nanshan District, Shenzhen, China
postal code 518054

☎ (86-755) 8603 7559

☎ (86-755) 8637 2611

✉ sales04@launch-china.cn

💻 www.launch-china.com

www.chinabalustrade.com

Thank you for visiting. Please do not heasite to contact us for factory direct price and professional advises.