

## Pool Fence Glass Railing Design Stainless Steel Glass Balustrade Spigots SCM

|                     |  |
|---------------------|--|
| Product Name        | Pool Fence Glass Railing Design Stainless Steel Glass Balustrade Spigots SCM                                       |
| Material            | Stainless Steel 316/2205   |
| Dimension           | Diameter 50mm×285mm  |
| Surface treatment   | high satin/mirror polished/ black matte  |
| For glass thickness | 10-13.52mm   |
| Consist             | square/round base plate spigot, square/round cover plate, grub screws, one black rubber spacer, one pressure plate |
| MOQ                 | 10 pcs   |
| ODM& OEM            | Accept   |
| Delivery time       | 10-15 days after deposit received  |
| Delivery term       | by ship, by air or by express  |

### Features:

- 1- Easy installation - DIY focused Perfect for glass swimming pool, glass garden, balustrade railing, staircase frame Post. No need to drill holes on glass.
- 2- Made of high grade 316 or Duplex 2205 stainless steel material, anti-corrosion and durable.
- 3- Complete your pool or other outdoor areas with a frameless glass fence.
- 4- Cover and 4 floor screws are included.

### Products details

**Model: SCM**



Mirror polished



Satin brushed



Project photos







Strength test report

Results Summary

(For details of individual tests, refer to the tables on the following pages.)

| ID       | Item/Heat No. | Dimensions/Type/Details                                    | Finish | Overall Assessment |
|----------|---------------|--|--------|--------------------|
| 14117/01 | SSBM316       | 180mm High, 50mm Square, Base Plate<br>316 Stainless steel | 316L   | COMPLIES           |

Remarks

After completion of the testing, the spigot was found to be in sound condition with no breakage, tearing or signs of fracture and no looseness of the fixings.

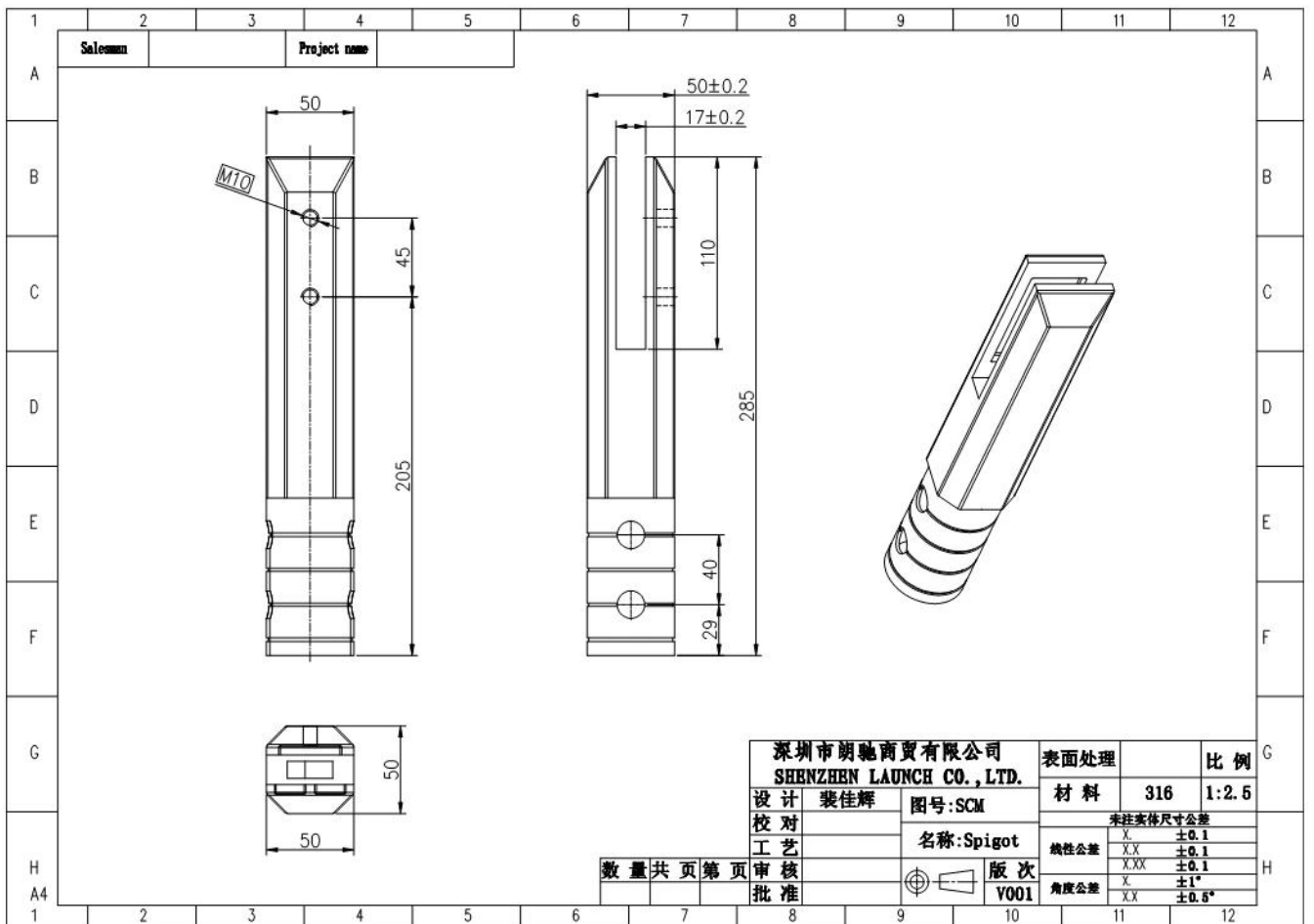


Colin Lorrimar  
Metallurgical Testing Manager



Accreditation No. ~~14117~~ 14117  
Accredited for compliance  
with ISO/IEC 17025

### Drawing



### Certification



ISO  
9001:2008  
REGISTERED



## Shenzhen Launch Co.,Ltd



[www.launch-china.cn](http://www.launch-china.cn)

Please contact us for further information:

Eve

Email: [sales03@launch-china.cn](mailto:sales03@launch-china.cn)

HP/WhatsApp: +8613686807796