

SS316 glass clamp for glass railing

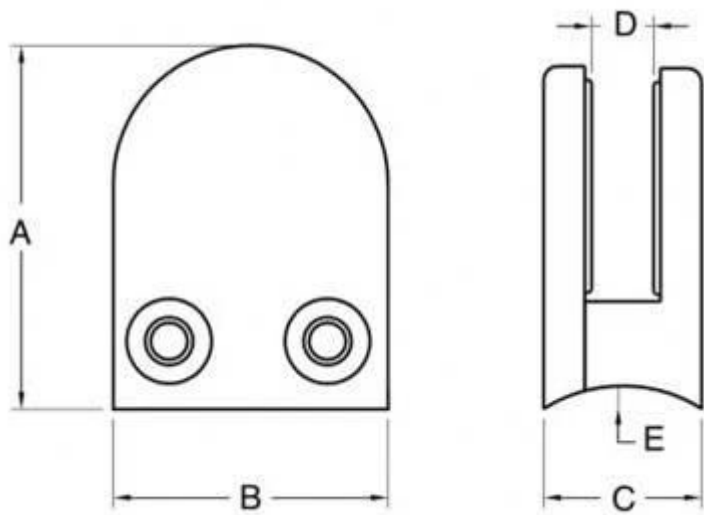


G106

material: stainless steel 304/316

finish: satin or mirror polished

for glass thickness: 8-12mm

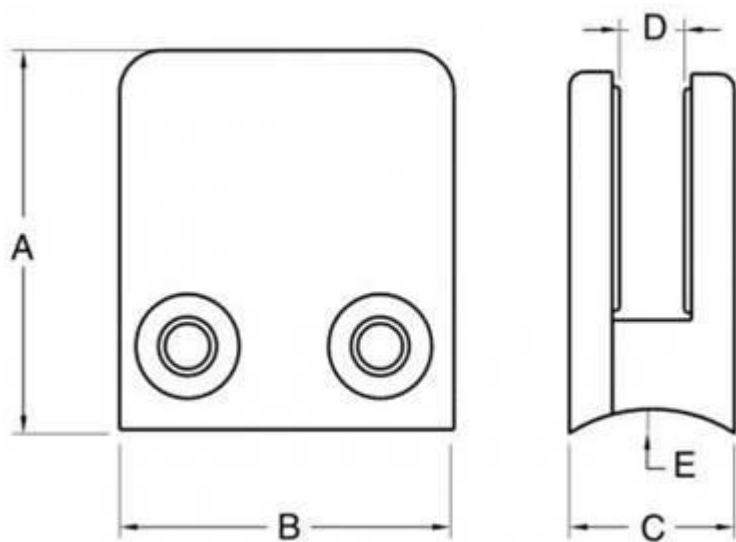


Model No.	A	B	C	D	E
G106	50	40	25	11	0
G106R	52	40	25	11	R-21.5



G102

material: stainless steel 304/316
finish: satin or mirror polished



Model No.	A	B	C	D	E
G102	44	44	25	11	0
G102R	48	44	25	11	R-21.5



