

Self closing heavy duty spring loaded stainless steel 316 pool fence glass door hinge

Pool fencing spring loaded stainless steel 316 glass door hinge Description:

Material: stainless steel 316

Finish: satin brushed or mirror polished

For glass thickness: 8-12mm

Loading capacity: 30-32kg

Types available: Glass to wall / square post model G-W, 180 degree glass to glass model G-G,
Glass to round post model G-R

Model No. G-G, glass to glass hinge





Model No. G-W2, glass to square post / wall hinge





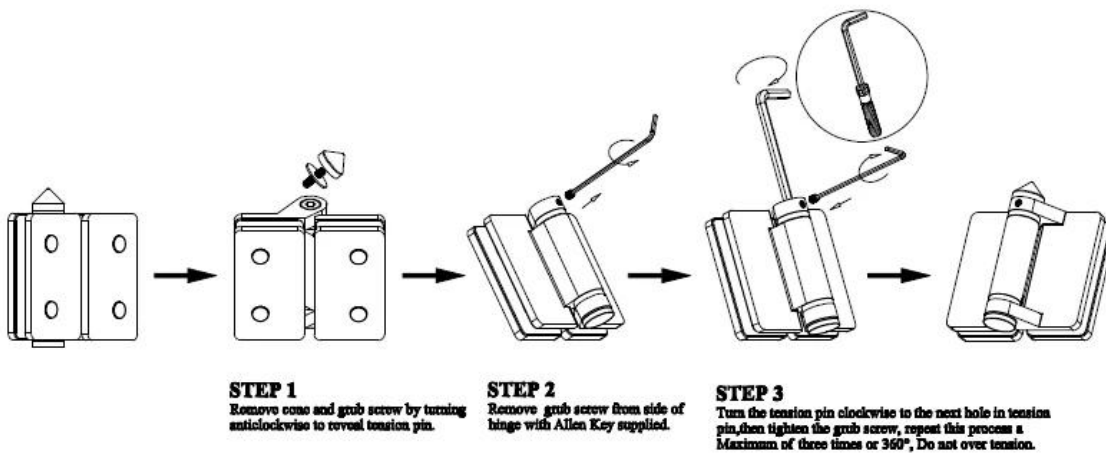
Model No. G-R, glass to square post / wall hinge





pool fencing spring loaded stainless steel 316 glass door hinge installed

Instructions for adjusting tension on Glass to Glass hinge



Contact us for more information now☐

Eve

Shenzhen Launch Co., Ltd

www.launch-china.com

www.chinabalustrade.com

Email: sales03@launch-china.cn

Skype: launch_03

HP/WhatsApp/WeChat: +8613686807796