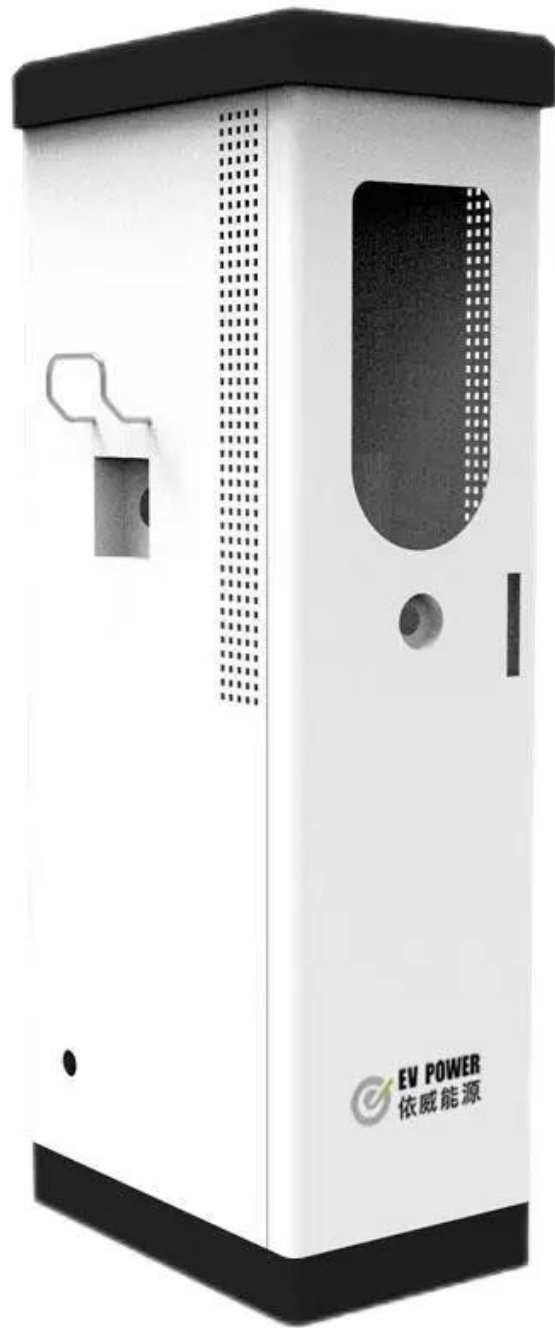


## Specification

<b>Product Name</b>	Sheet Metal Stamping Machine Products Custom Metal Cabinet
<b>Materials</b>	Aluminum, stainless steel, copper, bronze, iron, Brass, plastic
<b>Finish</b>	Anodizing, powder coating, Zinc Plating, Nickel Plating, Chrome Plating, Powder Coating, E-coating, blacken Etc.
<b>Tolerance</b>	Highest = $\pm 0.005\text{mm}$ or $\pm 0.0002\text{ inch}$
<b>Drawing format</b>	Stp, step, igs, iges, x_t, sat, stl, sldxml, prt, ipt, dxf, dwg, PDF, jpg, jpeg, png, etc.
<b>Certificate</b>	ISO 9001
<b>Size /Design</b>	As per customer's design
<b>MOQ</b>	1 pc







150KM超远续航  
一次换电跑遍全城

1

2

3

4

5

6

[launch-china.en.alibaba.com](http://launch-china.en.alibaba.com)

7

8

9

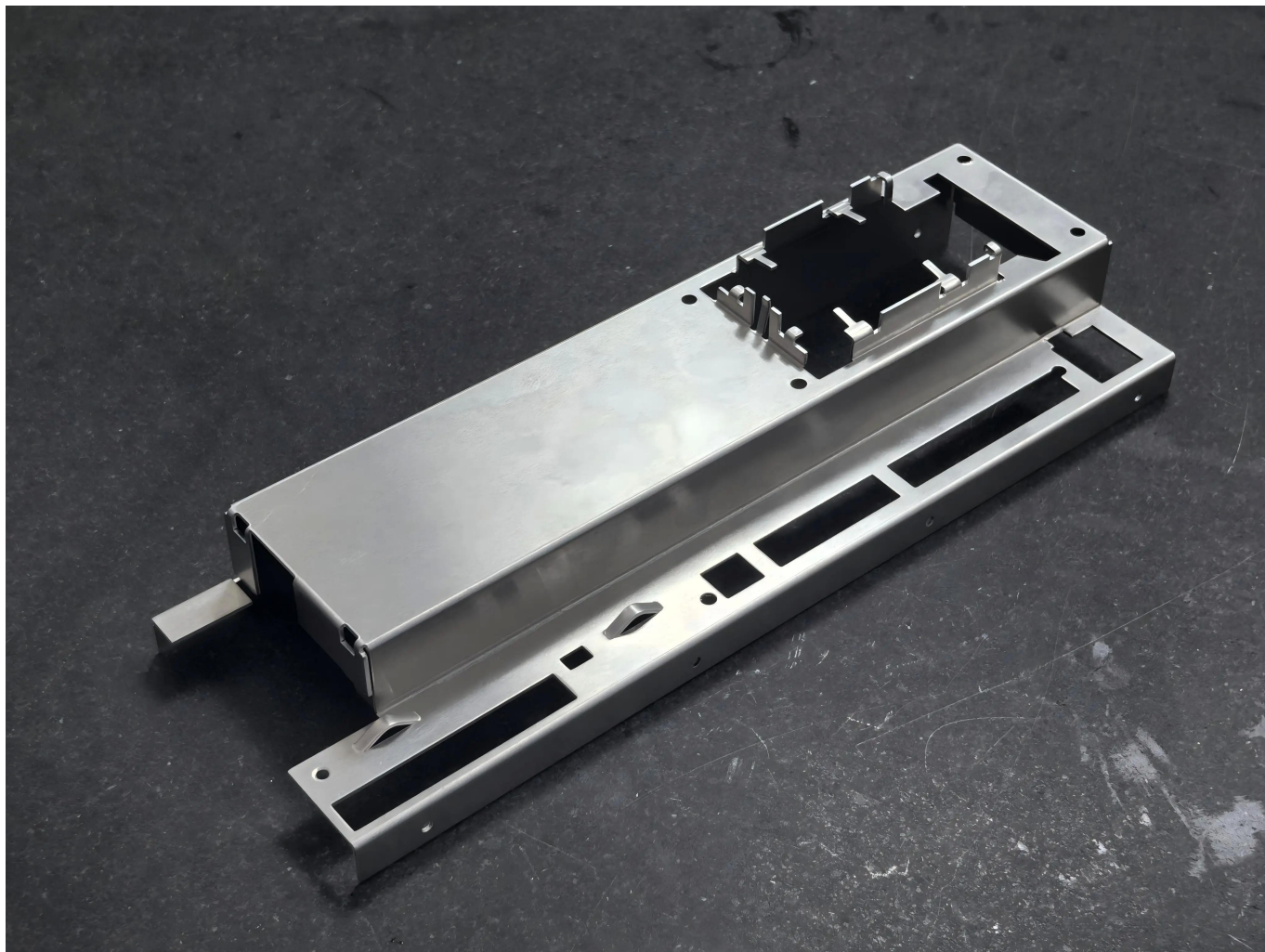
10

11

12



















. Stamping Workshop

Equipment	Qty(set)
200T双轴冲床 200T Double Crank Press	1
160T双轴冲床 160T Double Crank Press	2
110T~45T冲床 110T-45T PRESS	50

launch-china.en.alibaba.com

Equipment	Qty (set)
300T hydraulic press	1
200T hydraulic press	3









组装车间:  
 ASSEMBLY WORKSHOP

- . erp 物料管理
- . material controlled by erp system



Line A



Line B



Line C







### **Wide Range of Products**

From stair handrails, balcony railings, to customized stairs, prefabricated balconies to bathrooms - our diverse products are suitable for residential, commercial and industrial projects.



### **Excellent Quality and Craftsmanship**

Each product goes through strict quality control and is manufactured with high-quality materials such as stainless steel, aluminum alloy, tempered glass . We follow international standards (ISO, CE) to ensure the lifespan and performance of the products.



### **Customization and OEM Service**

Our R&D team works closely with customers to provide tailor-made solutions.



### **Competitive Prices and Fast Logistics**

Taking advantage of Shenzhen's strategic location as a manufacturing and export hub, we optimize costs and ensure timely global delivery by sea, air or land.



### **Professional Customer Support**

Our multilingual team provides full assistance from product selection and quotation to after-sales service to ensure a one-stop experience.



**Talk to Our Experts Today >>>>**





# Who we serve?



20  
YEARS

Shenzhen Launch Co., Ltd was founded in 2004, with head-quarter located in Nanshan Shenzhen , and factory located in Tangxia Dongguan . We have over 20 years experience in supplying construction materials and we've established a stable cooperation with more than 500 companies worldwide .

We manufacture not only high quality balustrade hand-rails, customized stairs & prefabricated balconies , but also customized aluminum glass doors & windows and shower enclosures .

Benefit from the strategic location of Shenzhen-a manufacturing and export hub , we are able to optimize production and logistic efficiency for our customers , enabling our customers to reduce cost and save time on hundreds of construction projects .

Do not hesitate to contact us whenever you have any enquiries.





## TEAM AND EXHIBITION

### WORLDWIDE EXHIBITION



## CERTIFICATE





## A. PACKING

We will pack our products tightly to ensure that they are not damaged in transit.



## B. TRANSPORT

We support three transportation: sea, land, and air to ensure that your goods can be delivered on time.

**It sells well in more than 100 countries and regions around the world**

