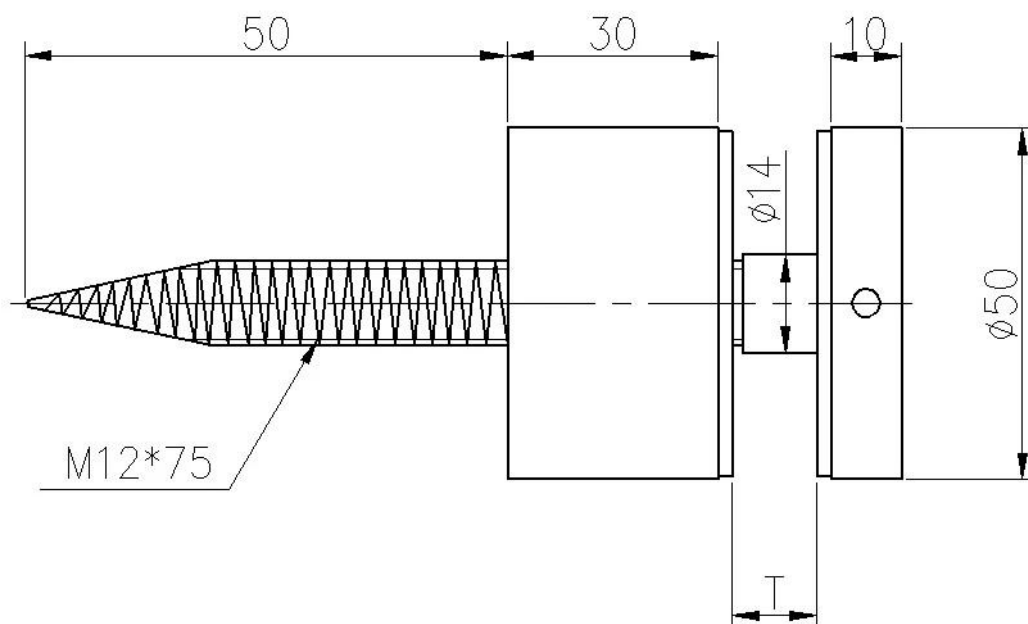


stainless steel glass standoff holder (SF-50) is usually used for holding glass panels. It can be mounted both to concrete and wood directly. Usually four to six standoffs hold a 1200 to 1500 wide panel. It is made of stainless steel 304 or 316, good anti-rust property allows it to be used indoors as well as outdoors.

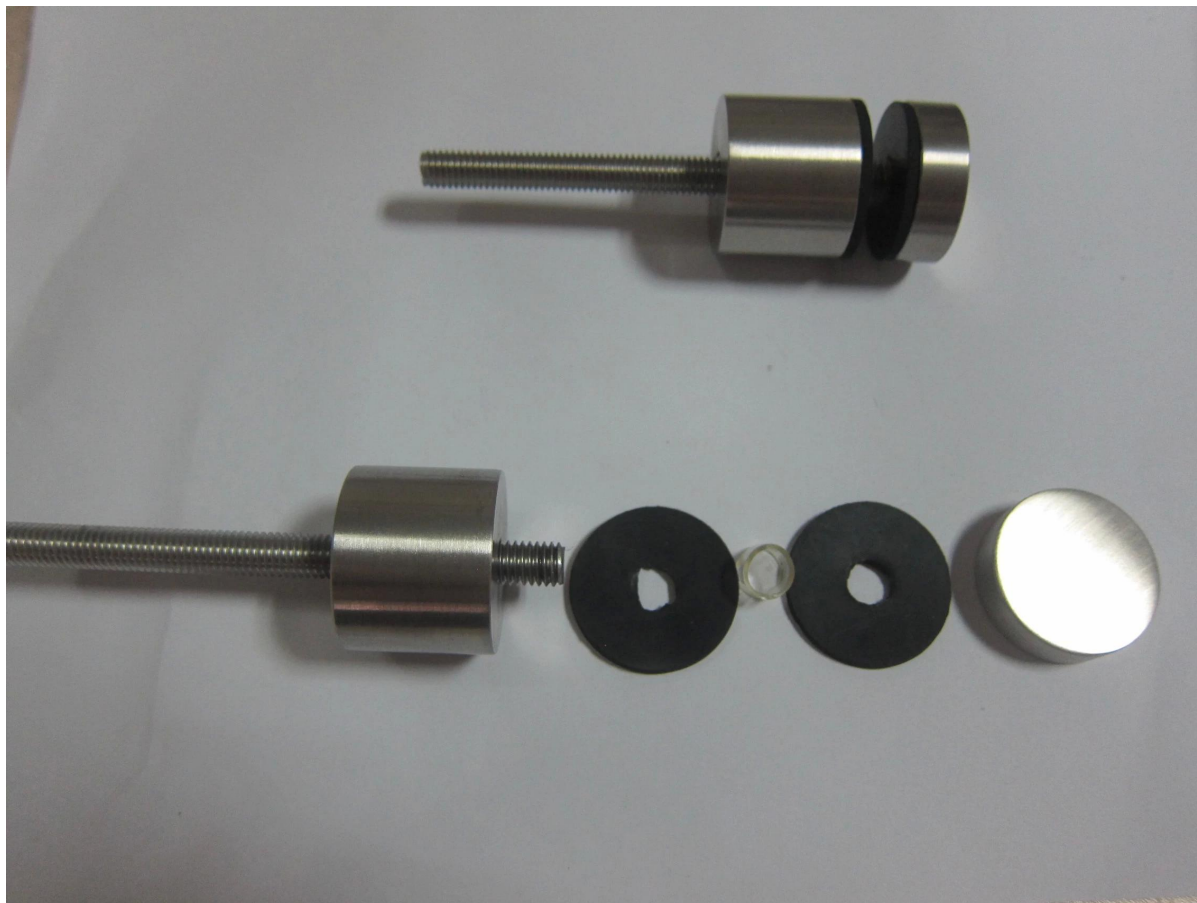
Application areas: balcony railing designs, terrace railing, staircase baluster, or other places you want. If you have a project needing glass railing, please send us the sketch with overall dimensions, our engineer will design for you.

Please check below dimension pictures. Some project pictures are shared by our kind end customers.

1, Stainless steel glass Standoff SF-50 dimension sketch:



Exploded view



2. Stainless steel glass Standoff SF-50, mounting to concret:



3. Stainless steel glass Standoff SF-50, mounting to wood:



4. Stainless steel glass Standoff SF-50, project photos:







Other types of railing, please click below link:

[cable railing for balcony designs, wire rope railing for sale](#)

[stainless steel spigot for pool fencing, stainless steel spigot for glass railing,](#)

[Launch stainless steel spigot](#)

[Shenzhen Launch balustrade post, stainless steel 316 post for semi frameless glass pool fencing, post for glass pool fencing](#)

[Shenzhen launch stainless steel 316 glass spider balustrade post for out door balcony railing designs](#)

[aluminum glass balustrade for balcony and terrace fencing](#)

Thanks for visiting!

Any inquiry or question, please leave me message.

You will get feedback within 24 hours.