

Soft Close satin stainless steel Safety Swimming pool gate hinge set includes 2 pcs hinge , max. door leaf weight can be 30kg per hinge set .

Features of Soft Close satin stainless steel Safety Swimming pool gate hinge-

Type	Pool gate hinge
Function	spring loaded type glass hinge
Model No.	G-G
Material	316 stainless steel
Finish	satin , mirror , powder coating , electro plating
For glass thickness	8mm 10mm 12mm
Max. door leaf weight	30kg
hinge cap	flat caps or coned caps
MOQ	1 pair
Other hardwares available for pool fence	glass latch , glass spigot

Soft Close satin stainless steel Safety Swimming pool gate hinge -



Soft Close Matte Black finish stainless steel Safety Swimming pool gate hinge-



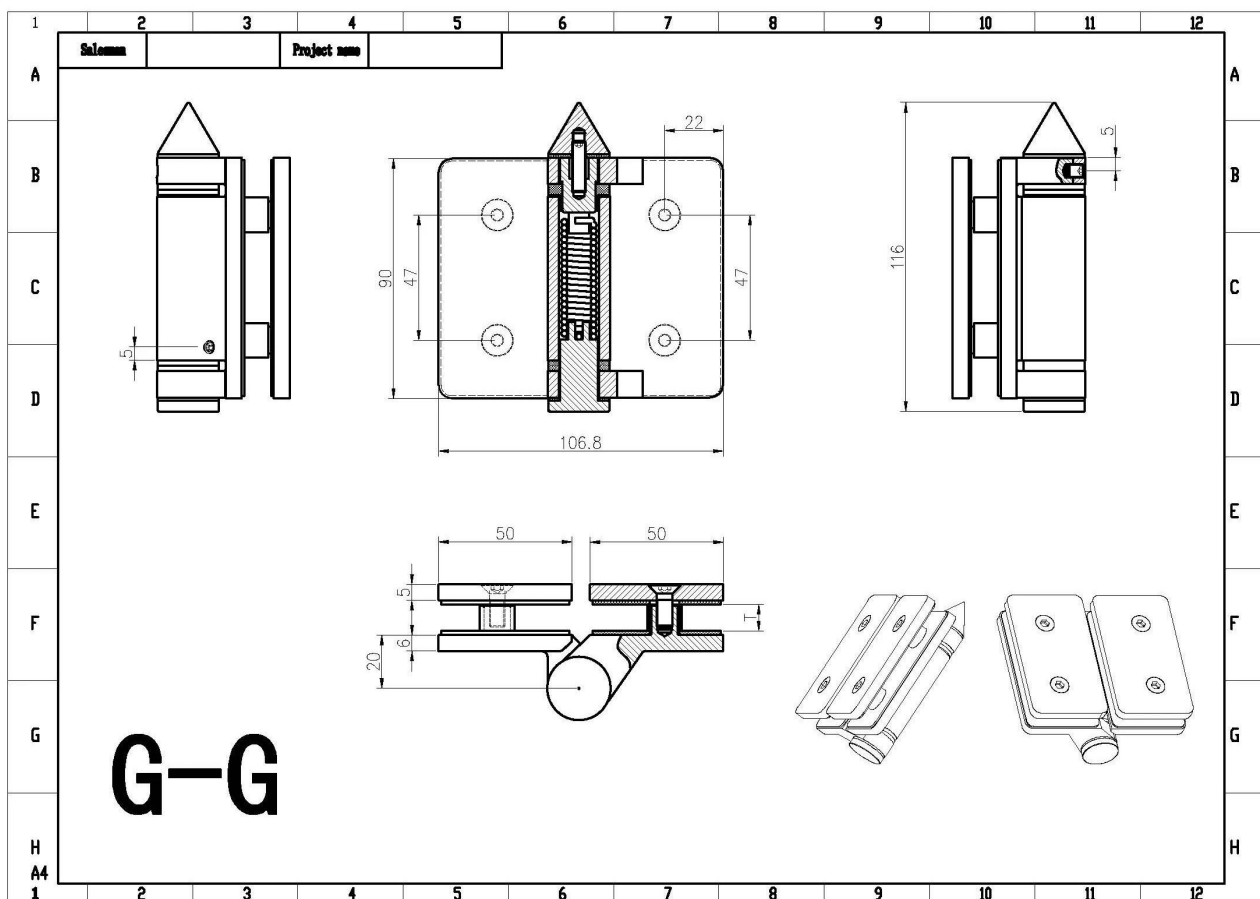








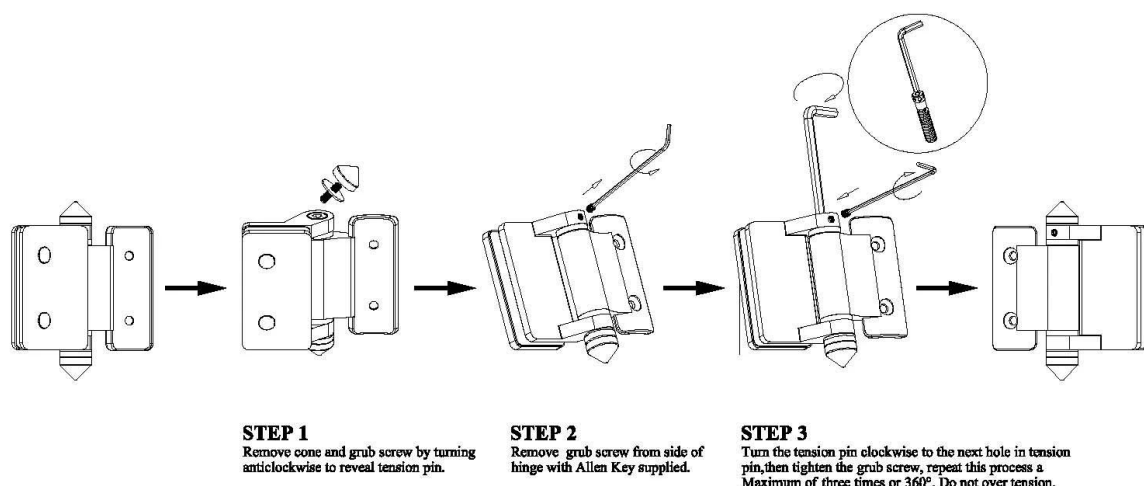
Dimensions for Soft Close stainless steel Safety Swimming pool gate hinge -



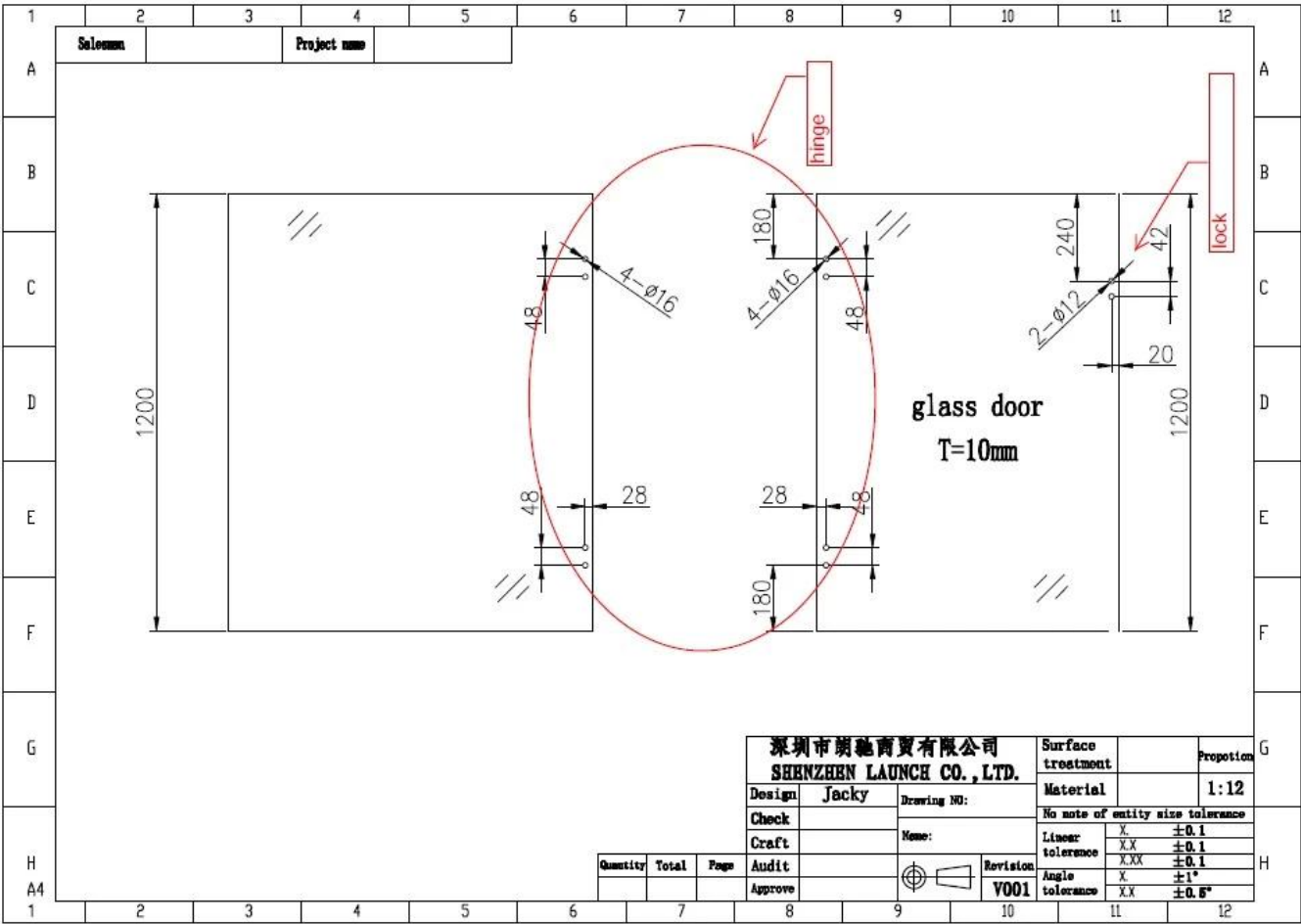
Installation instructions for Soft Close satin stainless steel Safety Swimming pool gate hinge-



### Instructions for adjusting tension on Glass to Round post hinge



Glass hole drawing for hinge & latch-



Other models of pool gate hinges -  
glass to wall hinge





glass to round post hinge



Production photos of glass hinges-



Project photos of swimming pool fence-





