

Description

- Square base plate spigot SBM-2 for stainless steel full frameless glass railing system
- Material: stainless steel 316, 316L, duplex2205
- Square base diamention: 100x100mm
- For glass thickness: 10-13.52mm (We also provide glass spigot for 15-16mm glass)
- To hold 1500mm wide glass, hight ≤ 1200 mm.
(if glass hight ≥ 1200 mm, core drill round and square spigot is recommended)
- Application: safe crystal clear pool fence, balcony frameless railing, deck glass railing, garden stainless steel fencing, backyard stainless steel railing.
- For both commerical and modern house home design
- For both wholesale and retail (We are factory)
- Sample is always available
- Have passed strength test

Products details

mirror surface



satin surface



Project photos







associated products: [glass door latch](#), [glass door hinge](#), [slot handrail tube](#)

For more glass balustrade inspiration, go [HERE](#)

Strength test report

Results Summary

(For details of individual tests, refer to the tables on the following pages.)

ID	Item/Heat No.	Dimensions/Type/Details	Finish	Overall Assessment
14117/01	SSBM316	180mm High, 50mm Square, Base Plate 316 Stainless steel	316L	COMPLIES

Remarks

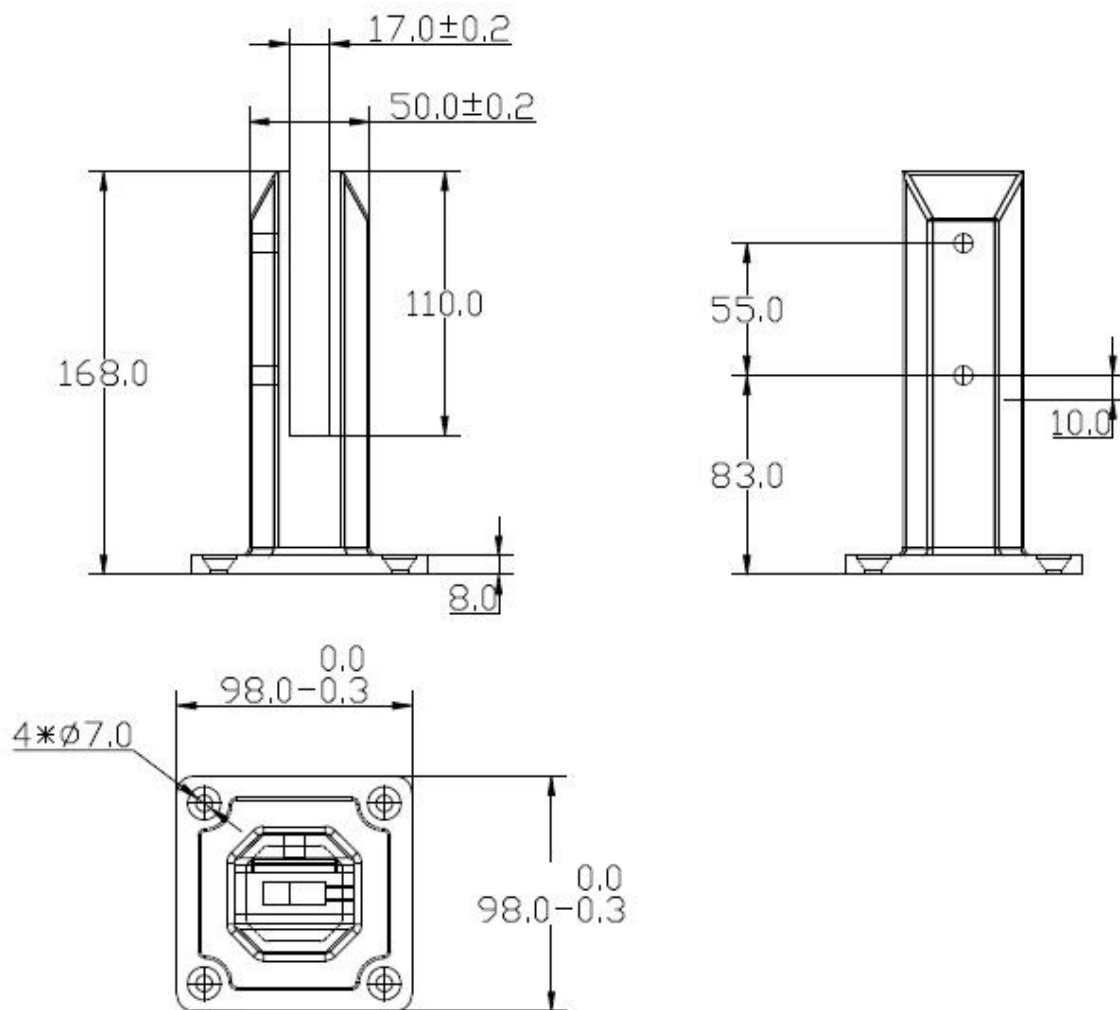
After completion of the testing, the spigot was found to be in sound condition with no breakage, tearing or signs of fracture and no looseness of the fixings.

Colin Lorrimer
Metallurgical Testing Manager



Accreditation No. 1444
Accredited for compliance
with ISO/IEC 17025









Drawing



Packaging & Delivery

- One pc into one plastic bag, then into one box. 20 pcs into one carton.
- Shipping option: by sea(10-15 days)/by air(3-5 days)



packing	plastic bag+box+carton
production lead time	30-45 days ; also depending on your qty.
Shippment	 
	 
	 
payment	 

Factory & Certification



KEBIL 科比奥™

ISO
9001:2008
REGISTERED

Factory Audit



www.launch-china.cn



Shenzhen Launch Co.,Ltd



www.launch-china.cn

Need a quote or any questions, please leave a message.
Or contact me as below info. will get back to you ASAP!



深圳市朗驰商贸有限公司
SHENZHEN LAUNCH CO., LTD.

朗驰国际有限公司
LAUNCH INTERNATIONAL LIMITED.

董 萍 Doris Dong

Senior Sales Representative

☎ (86) 135 3050 6265

深圳市南山区南山大道1092号亿利达大厦B区3栋5003

Room 5003, Building 3, Yilida Building, No.1092
Nanshan Road, Nanshan District, Shenzhen, China
postal code 518054

☎ (86-755) 8603 7559

☎ (86-755) 8637 2611

✉ sales04@launch-china.cn

💻 www.launch-china.com

www.chinabalustrade.com