

## **Stainless Steel Square Glass Clamp Clip for 8-12mm Tempered Glass Railing**

### **Description**

- Made of stainless steel 316 (stainless steel 304 is available)
- Polished or brushed finish or black electroplated or black powder coating
- For 8-12mm glass
- Size: 80x35mm or customized
- Net weight: 227g/piece
- For use in 180 degree tempered glass panel
- Minimum order quantity: one piece
- Sample: available
- Customer size glass clamps: available (We are factory)
- OEM products is welcomed

### **Glass clamp BC-80X35 details**

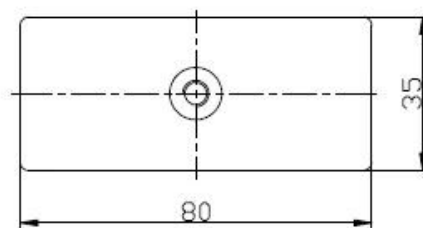
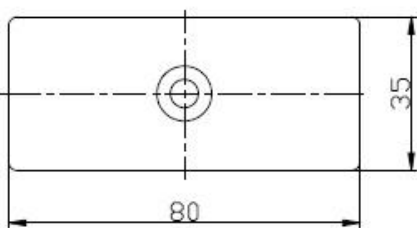
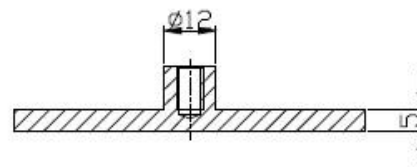
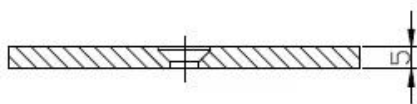
Glass clamps product picture







Glass clamp Technical Drawing



## Delivery & Packing

--Delivery time: 5-7 days by air. 15-20 days by sea.

--Packaging: one pc into one plastic bag, then into one white box, 10 pcs into one carton

--Regular lead time: 7 days if products are in stock. About 20 days if products are not in stock. It depends on quantity.



## Glass clamp Project photos











Other 180 degree glass clamp holders











Need a quote or any questions, please leave a message.  
Or contact me as below info. will get back to you as soon as possible!  
For any urgent enquiry, please get in touch on belows:  
wechat: or what's up: +86 15989339827  
Email: sales04@launch-china.cn