

Product Name	Stainless Steel 304/316 Glass Spider Fittings for Glass Curtain Wall
Material	stainless steel 304 or 316
Surface Treatment	Hairline, Satin, Polished
Application	Glass curtain wall system
Center to Center	200mm,220mm,250mm
Glass Thickness	8mm to 18mm, or customized
Types of Spider Fittings	1. Single Spider;2. 2 Arms Spiders(with 90 degree or 180 degree) 3. 3 Arms Spiders; 4. 4 Arms Spiders
Accessories	Glass routel, connector
Production Ability	5000 Pieces/Month

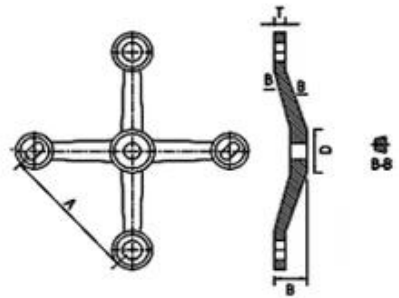
Available types:



MQ-01

Material:SUS304/SUS316 Stainless Steel
Finish:Satin/Polish/PVD

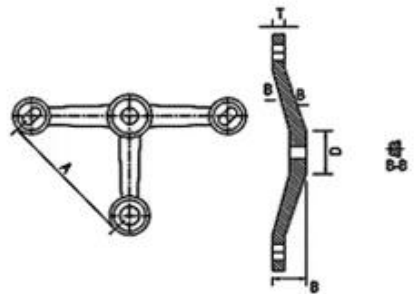
A	B	D	T
300	52	56	16
250	48	56	13.5
220	46	54	13
200	46	47	11
160	31	43	12
150	35	45	10



MQ-02

Material:SUS304/SUS316 Stainless Steel
Finish:Satin/Polish/PVD

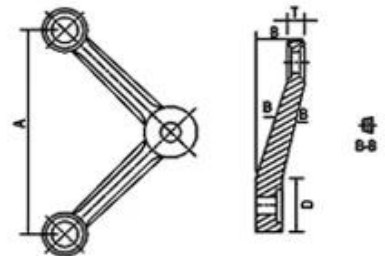
A	B	D	T
300	52	56	16
250	48	56	13.5
220	46	54	13
200	46	47	11
160	31	43	12
150	35	45	10



MQ-03

Material:SUS304/SUS316 Stainless Steel
Finish:Satin/Polish/PVD

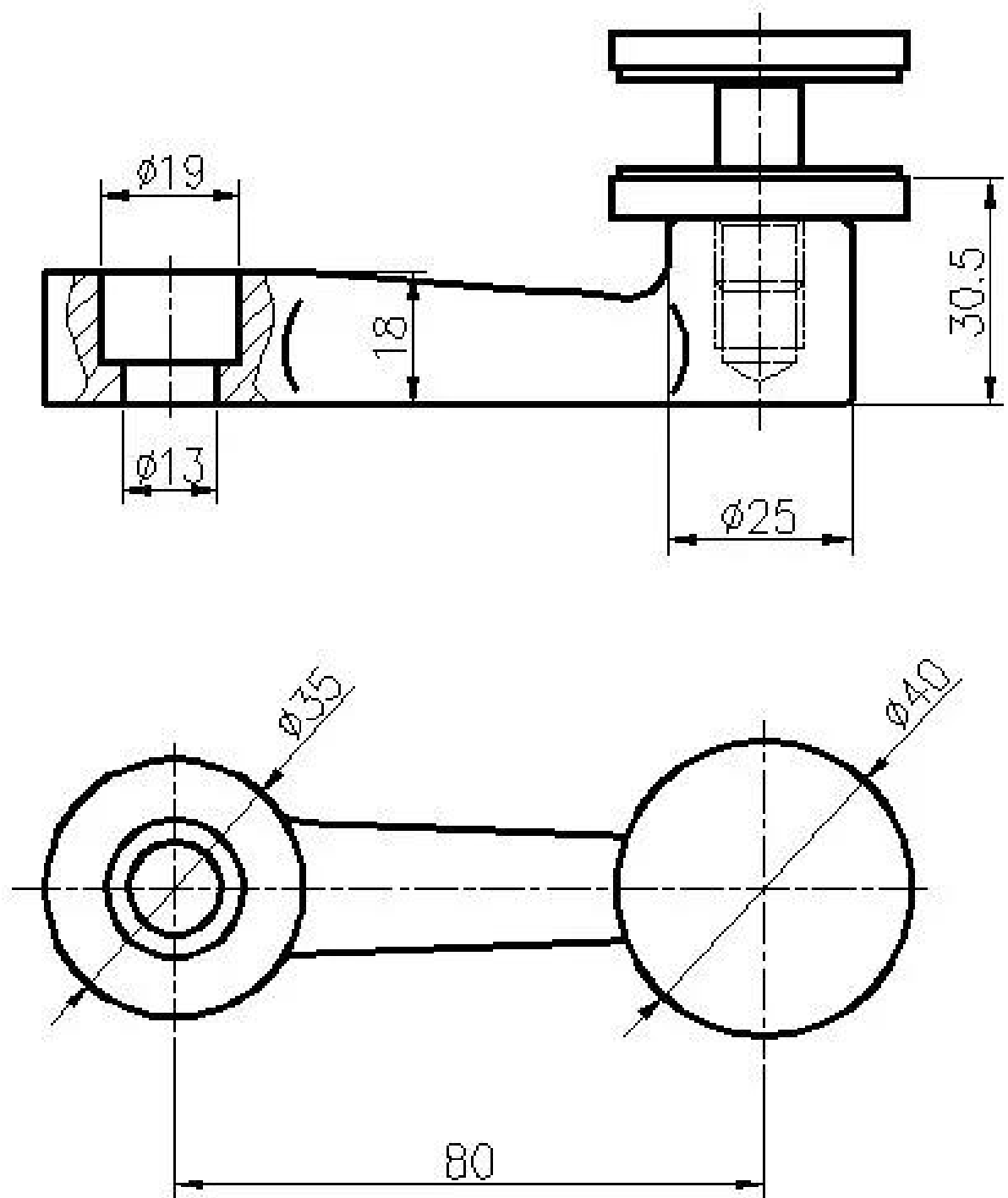
A	B	D	T
300	52	56	16
250	48	56	13.5
220	46	54	13
200	46	47	11
160	31	43	12
150	35	45	10

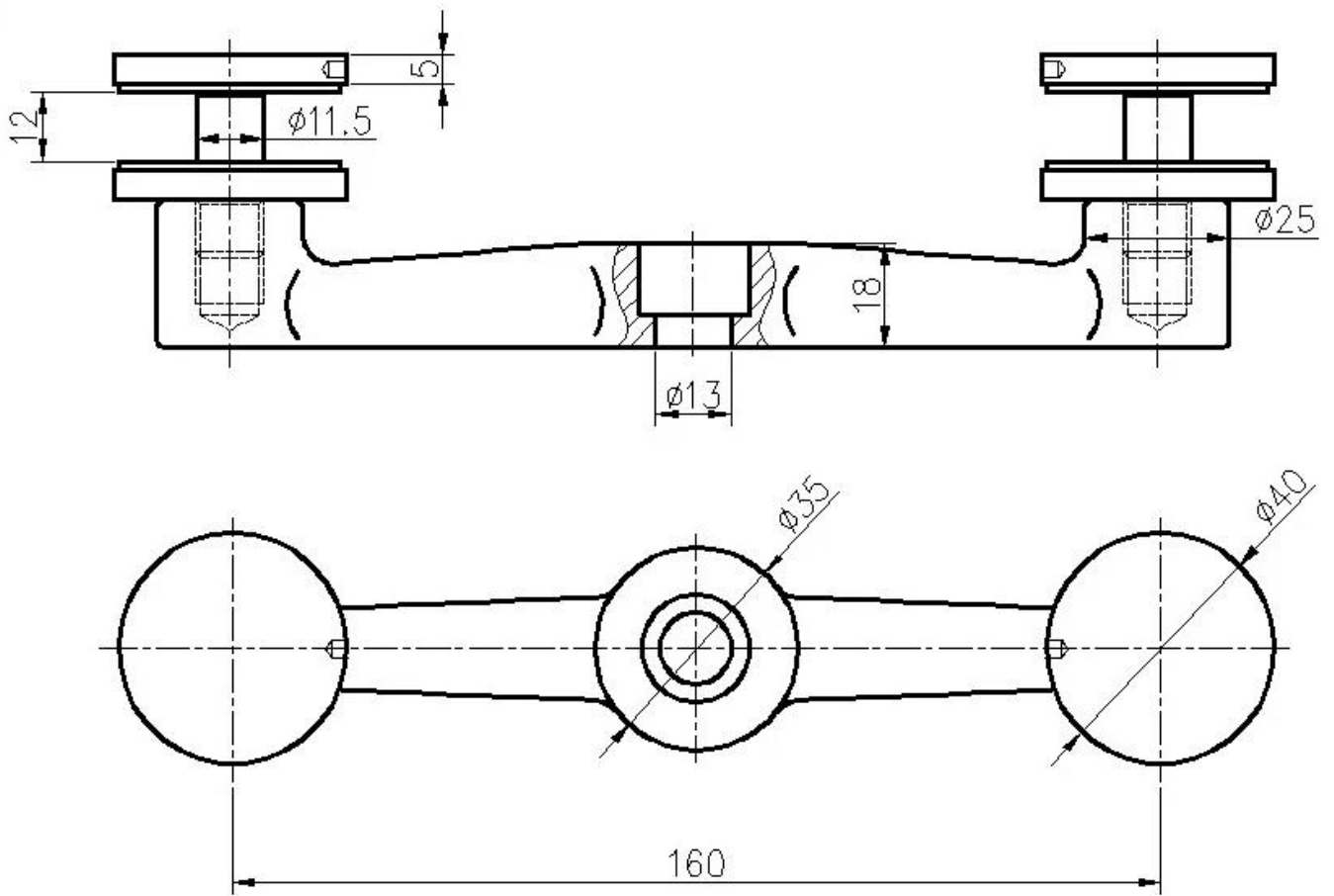












Glass Spider Fittings for Glass Curtain Wall Balustrades & Handrails Stairs Railing Accessories

4 Arms Glass Spider Fittings





