

Description

- Material: stainless steel 316 (304 grade is available)
- Finish: polished or brushed
- Round post size: $\phi 50.8\text{mm}$ (customer diameter available), post wall 1.5mm thick
- Height: 1100mm (customer height available)
- For 8-12mm glass
- Sold as a complete post kit
- Surface mount (core mount and fascia mount options available)
- Top rail required or end cap required
- Meets and exceeds guard rail load requirements
- Sample is available to check quality before placing an order
- Factory inspection is available
- For both wholesales and retail

3 models balustrade post

1. End post **LCH-106**



LCH-106

2. Middel post **LCH-107**



LCH-107

3. 90 degree corner post **LCH-108** (customer degree available)



LCH-108

Products Details

brushed finish

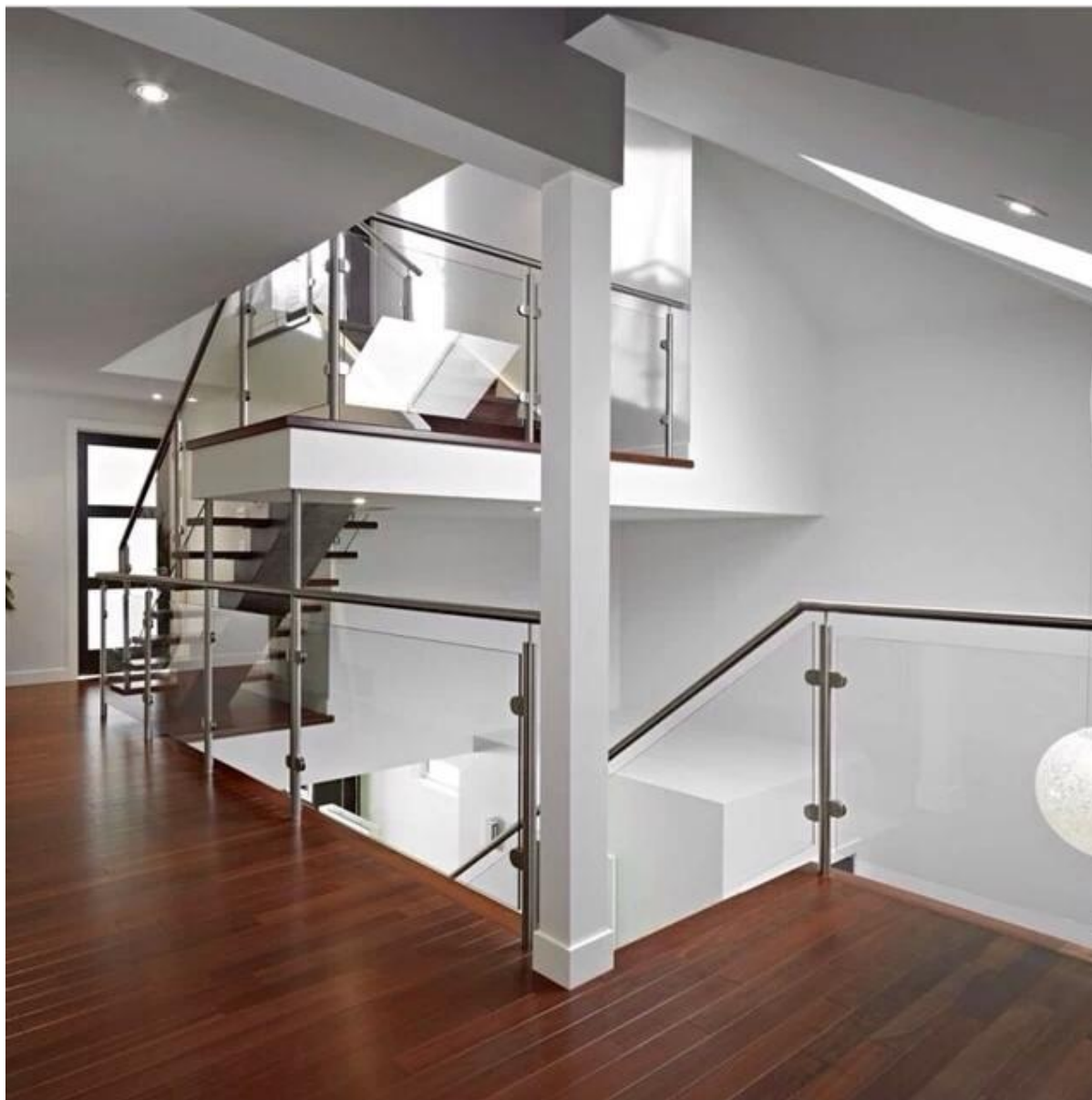


polished finish



Project

Top rail required balustrade post kit for stair case design



End cap required balustrade post kit for deck railing



End cap required balustrade post kit for swimming pool fence



Delivery & Packing

--Delivery time: 5-7 days by air. 15-20 days by sea

--Packaging: one piece into one plastic bag, then into one box.

--Regular lead time: 7-10 days if products are in stock. 20-25 days if products are not in stock. It depends on quantity.

Ineer packaging



Full packaging



Factory & Certification

Contact us below to book a factory visiting [📅](#)



Need a quote or any questions, please leave a message.

Or contact me as below info. will get back to you as soon as possible!

For any urgent enquiry, please get in touch on wechat: 973219879 or what's up: +86 13530506265



董 萍 Doris Dong

Senior Sales Representative

☎ (86) 135 3050 6265

深圳市南山区南山大道1092号亿利达大厦B区3栋5003

Room 5003, Building 3, Yilida Building, No. 1092
Nanshan Road, Nanshan District, Shenzhen, China
postal code 518054

☎ (86-755) 8603 7559

☎ (86-755) 8637 2611

✉ sales04@launch-china.cn

💻 www.launch-china.com

www.chinabalustrade.com