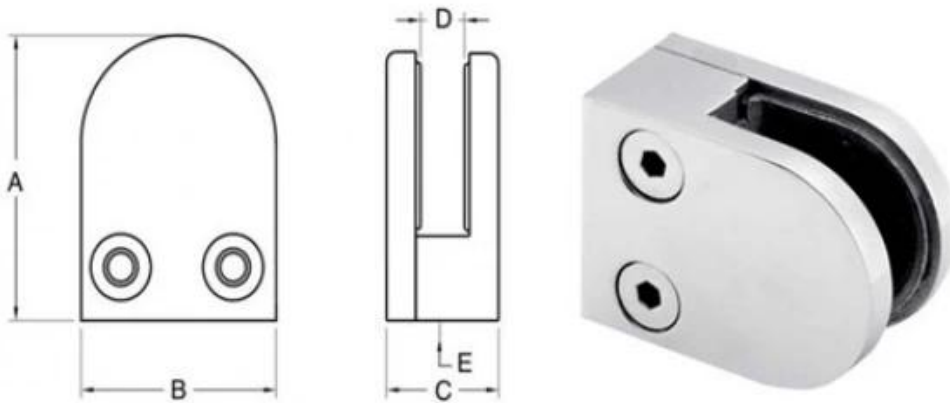


Description

- Material: stainless steel 316 (stainless steel 304 is available)
- For 10-12mm glass, Use monolithic tempered glass
- For use with square tubing or other flat surfaces (Radius surface mount clamp is available)
- Gasket is included

Glass clamp **G105** size



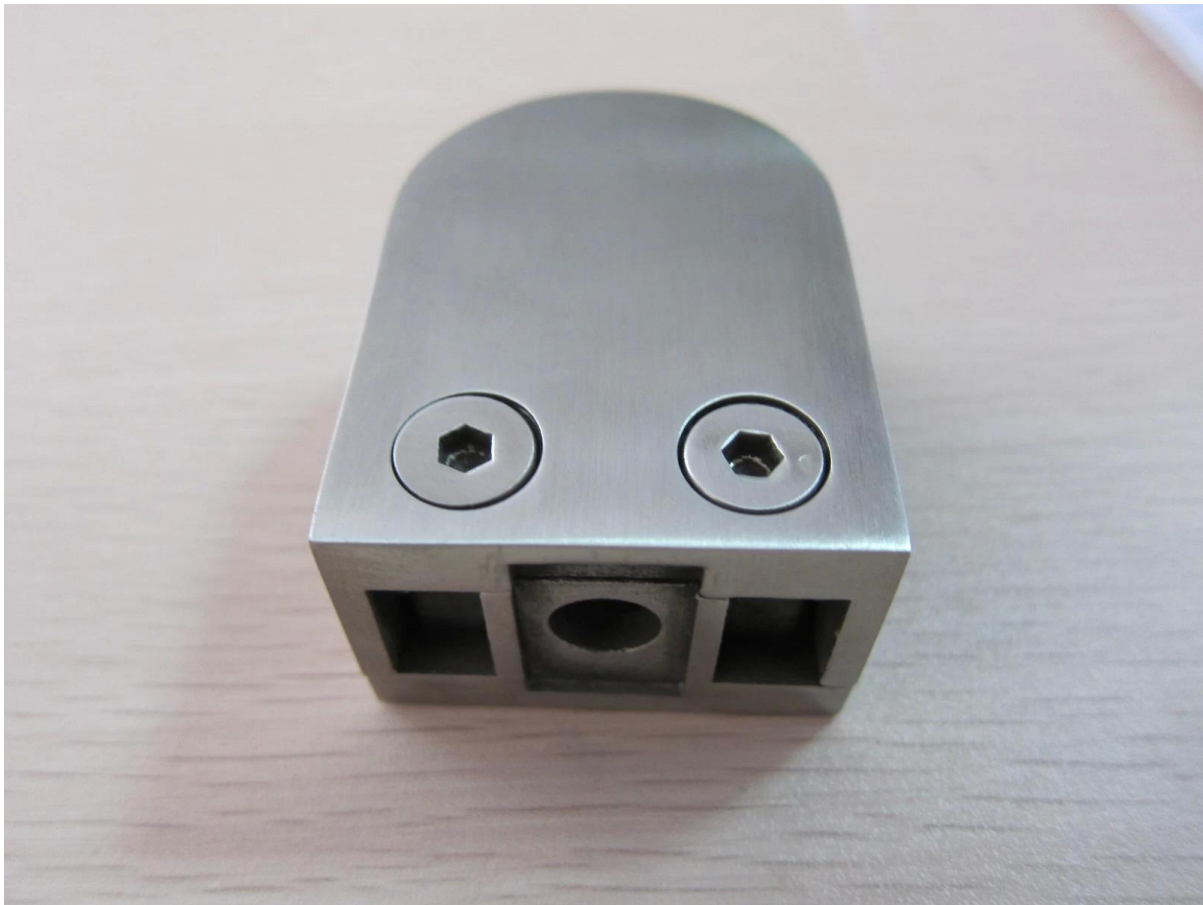
Item No.	A	B	C	D
G103	50	40	22	8
G104	50	40	26	12
→ G105	54	45	28	14
For 10-12mm glass				

Glass clamp G105 Details

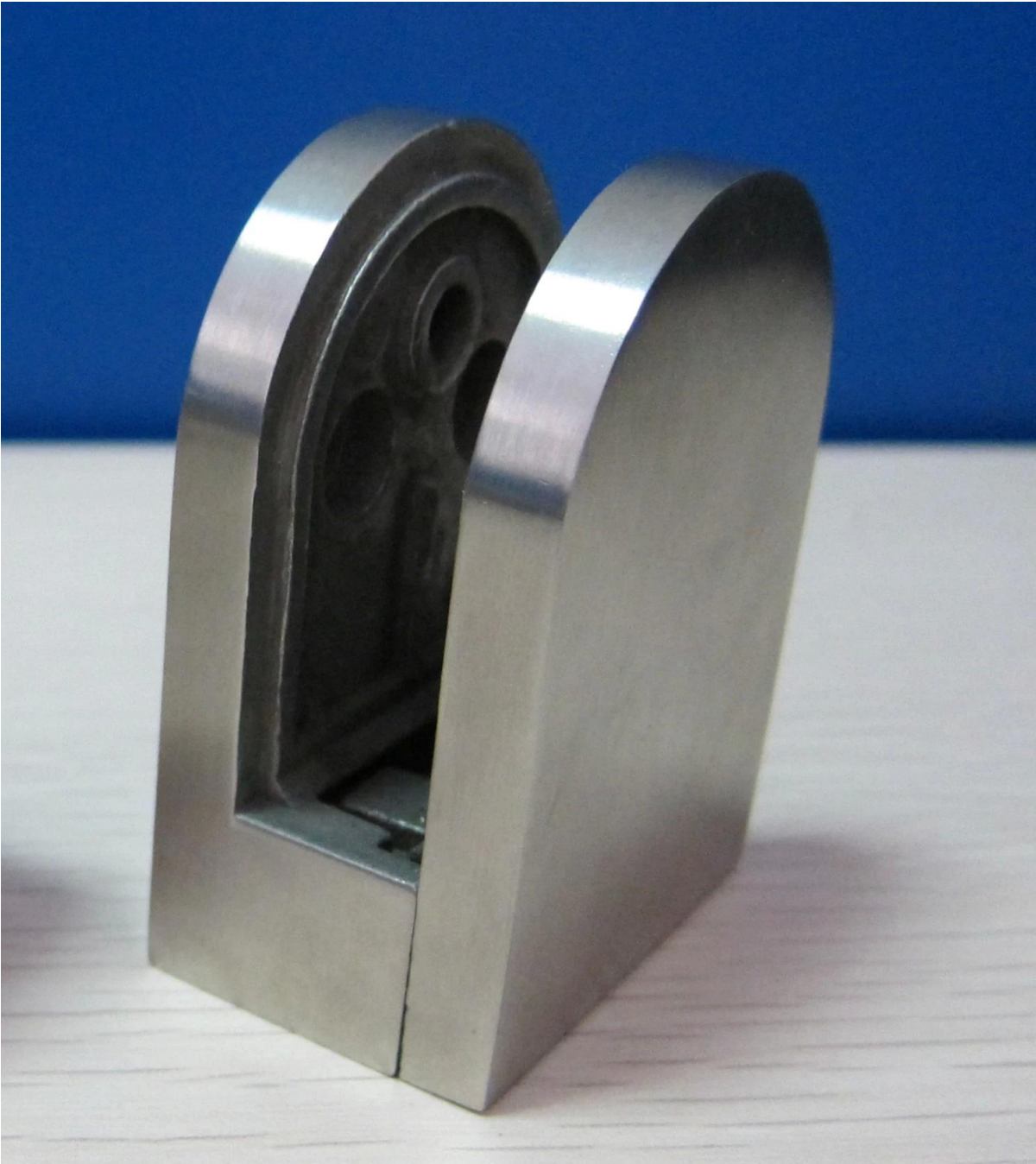
Glass clamp with gasket (Each clamp with 2 pieces gaskets)



Back view



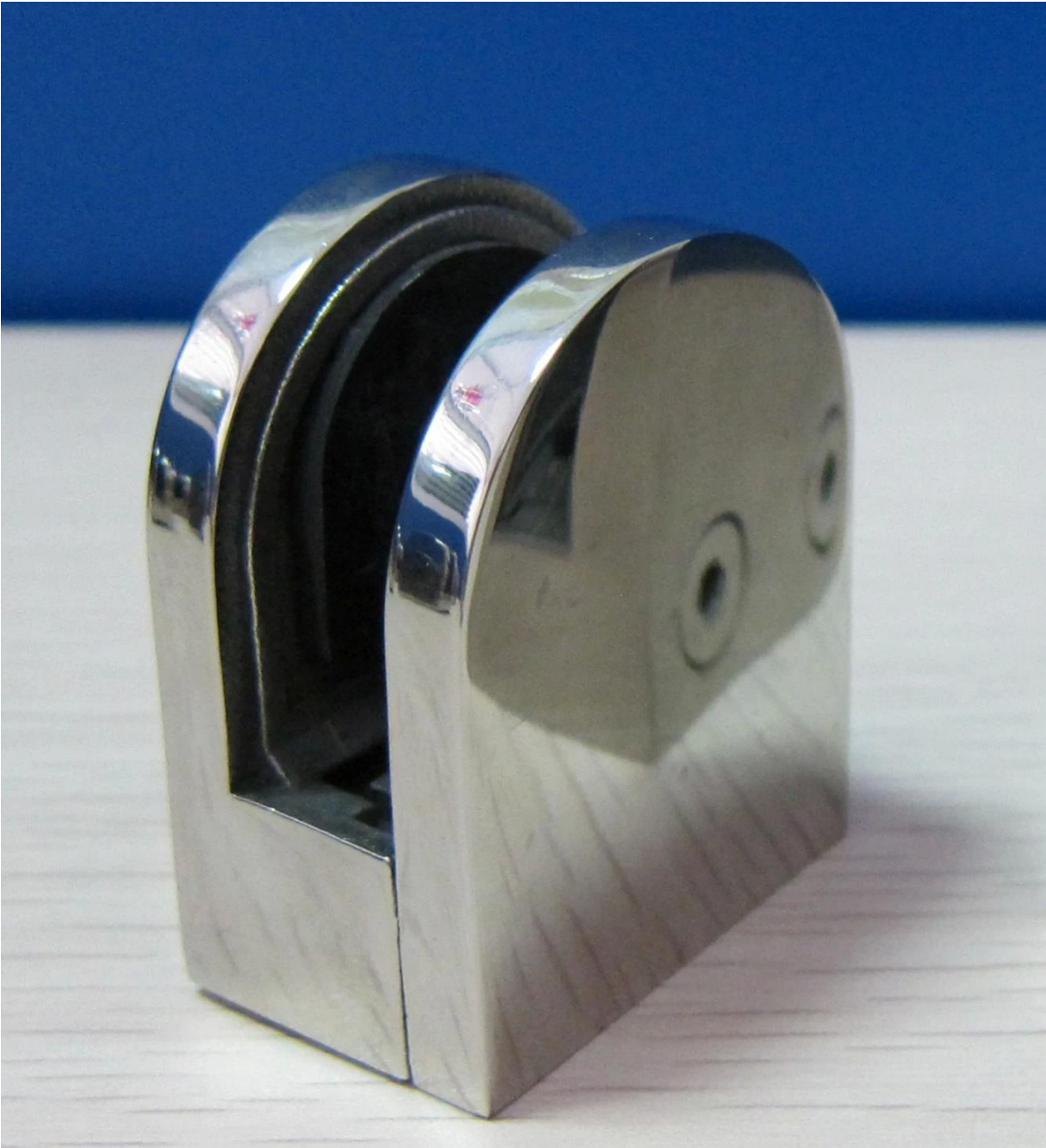
Side view



Brushed finish



Polished finish



Installation Guide

Glass Clamp Installation Guide



1
Mark and centre punch desired location of blind rivet nut location.



2
Drill centre punched hole in tube to suit blind rivet nut.



3
Insert blind rivet nut into tube and fasten with blind rivet tool.



4
Check installed blind rivet nut is secure and ready for install.



5
Align half glass clamp with blind rivet nut inline position. Screw in button head cap screw into thread and tighten with hex key.



6
Select appropriate rubber gasket to suit glass panel thickness. Install rubber gasket into both sides of glass clamp. (Note rubber gasket marked with sizes).



6a
If heavier clamping load is required please use supplied glass clamp pin, during the install process. Note glass panels will require drilling in order to fit glass clamp pins.



7
Fit glass panel into position, install second half of glass clamp secure with provided hex screws.



8
Tighten glass clamps with hex key, and check glass panel are secure with no movement.

Delivery & Packing

--Delivery time: 5-7 days by air. 15-20 days by sea.

--Packaging: one pc into one plastic bag. 10 pcs into one box.

--Regular lead time: 7 days if products are in stock. About 20 days if products are not in

stock. It depends on quantity.



Need a quote or any questions, please leave a message.

Or contact me as below info. will get back to you as soon as possible!

For any urgent enquiry, please get in touch on wechat: 973219879 or what's up: +86 13530506265

KEBIL 科比奥®

深圳市朗驰商贸有限公司
SHENZHEN LAUNCH CO., LTD.

朗驰国际有限公司
LAUNCH INTERNATIONAL LIMITED.

董萍 Doris Dong

Senior Sales Representative

☎ (86) 135 3050 6265

深圳市南山区南山大道1092号亿利达大厦B区3栋5003

Room 5003, Building 3, Yilida Building, No.1092
Nanshan Road, Nanshan District, Shenzhen, China
postal code 518054

☎ (86-755) 8603 7559

☎ (86-755) 8637 2611

✉ sales04@launch-china.cn

🌐 www.launch-china.com

www.chinabalustrade.com