

## Stainless Steel Glass Deck Railing Bracket & Glass Clip for Stairs, Glass Clamp Bracket Holder

### Product Description

---

Product Name	<b>Stainless Steel Glass Deck Railing Bracket &amp; Glass Clip for Stairs, Glass Clamp Bracket Holder</b>
Material	Stainless steel 304 or 316
Finish	Mirro / satin finish
Manufacture Method	CNC machining
For Glass Thickness	10-12mm glass or customer's requirements
Customized glass clamp	Available. We are factory
Usage	Used between glass to glass
Application	Glass railing for balcony, stairs, deck, pool fence,,,
Installation	Glass mounting
Sample	Available to check quality before order
Factory Inspection	Available
Safety Packaging	Bubble bag - cardboard box - carton
Certified	Yes (Material test report can be provided)
OME & ODM Service	Available



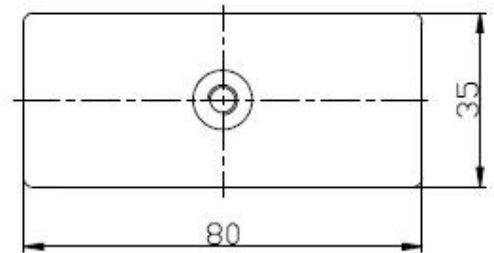
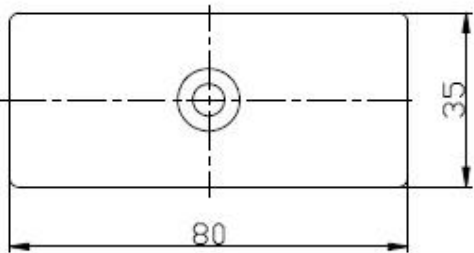
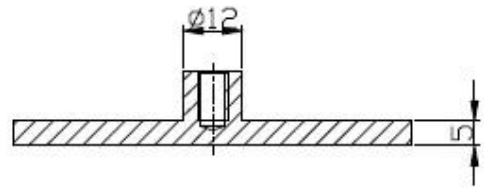
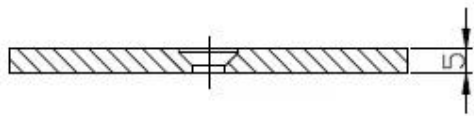
### **Glass Clamp Details**

---

(1) Square Glass to Glass Clamp BC-80X35







## (2) Other Type Glass Clamp We Supply:

KEBIL 科比奥 SHENZHEN LAUNCH CO., LTD

STAINLESS STEEL BALUSTRADE AND FITTINGS

**GLASS CLAMP**

Part No.	Material	Finish	Size	Glass thickness
• G102	• AISI 304	• Satin	• 44x44x25mm	• 8-10mm
• G102R	• AISI 316	• Mirror	• 44x44x25mm	• 8-10mm

Part No.	Material	Finish	Size	Glass thickness
• G103	• AISI 304	• Satin	• 50x40x22mm	• 6-8mm
• G103R	• AISI 316	• Mirror	• 52x40x22mm	• 6-8mm

Part No.	Material	Finish	Size	Glass thickness
• G104	• AISI 304	• Satin	• 50x40x26mm	• 8-10mm
• G104R	• AISI 316	• Mirror	• 52x40x26mm	• 8-10mm

Part No.	Material	Finish	Size	Glass thickness
• G105	• AISI 304	• Satin	• 55x45x28mm	• 10-12mm
• G105R	• AISI 316	• Mirror	• 58x45x28mm	• 10-12mm

Part No.	Material	Finish	Size	Glass thickness
• G106	• AISI 304	• Satin	• 50x40x25mm	• 6-8mm
• G106R	• AISI 316	• Mirror	• 52x40x25mm	• Used at corner

Part No.	Material	Finish	Size	Glass thickness
• G107	• AISI 304	• Satin	• 63x45x28mm	• 10mm
• G107R	• AISI 316	• Mirror	• 66x45x28mm	• 10mm

Part No.	Material	Finish	Size	Glass thickness
• G108	• AISI 304	• Satin	• 55x55x25mm	• 10-12mm
• G108R	• AISI 316	• Mirror	• 58x55x25mm	• 10-12mm

Part No.	Material	Finish	Size	Glass thickness
• BC-60	• AISI 304	• Satin	• Dia 60mm	• 8-12mm
• BC-60R	• AISI 316	• Mirror	• Dia 60mm	• 8-12mm

Part No.	Material	Finish	Size	Glass thickness
• BC-80x35	• AISI 304	• Satin	• 80x35mm	• 8-12mm
• BC-80x35R	• AISI 316	• Mirror	• 80x35mm	• 8-12mm

Part No.	Material	Finish	Size	Glass thickness
• CB-180	• AISI 304	• Satin	• glass to wall	• 8-12mm
• CB-180R	• AISI 316	• Mirror	• glass to wall	• 8-12mm

Part No.	Material	Finish	Size	Glass thickness
• CB-90	• AISI 304	• Satin	• 52x52x25mm	• 8-12mm
• CB-90R	• AISI 316	• Mirror	• 52x52x25mm	• 8-12mm

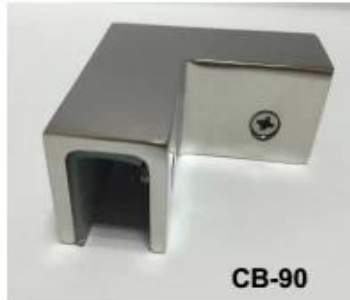
Part No.	Material	Finish	Size	Glass thickness
• PV-90	• AISI 304	• Satin	• 50x51.3mm	• 8-12mm
• PV-90R	• AISI 316	• Mirror	• 50x51.3mm	• 8-12mm

Part No.	Material	Finish	Size	Glass thickness
• PV-180	• AISI 304	• Satin	• 60x25mm	• 10-12mm
• PV-180R	• AISI 316	• Mirror	• 60x25mm	• 10-12mm



**BC-80x35**

- Square 80x35mm clamps
- To hold **180°** glass panels
- For 8-12mm glass



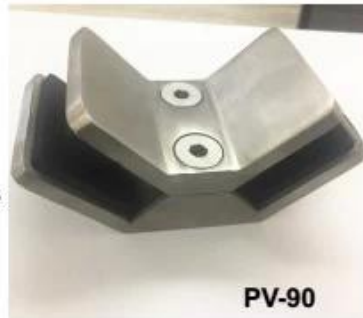
**CB-90**

- Corner glass clamp
- To hold **90°** glass panels
- For 8-12mm glass



**BC-60**

- Round  $\phi$ 60mm clamps
- To hold **180°** glass panels
- For 8-12mm glass



**PV-90**

- Corner glass clamp
- To hold **90°** glass panels
- For 12-15mm glass



**CB-180**

- **Glass to wall** clamps
- For 8-12mm glass



**PV-135**

- Corner glass clamp
- To hold **135°** glass panels
- For 8-12mm glass

(3) Glass clamps we made for our customers.









**Glass Clamp project**

---











## FAQ

---

### 1.Are you factory?

Yes, we are factory.

### 2.Do you offer free samples?

Yes, we offer free samples, but customers need to pay express charges.

### 3.What materials do you have?

We have the material of stainless steel 304, 316, 316L and Duplex 2205.

### 4.What is your MOQ?

MOQ of order required is 1 pc.



### 5.What kind of payment do you accept?

We accept the payment of T/T, LC, PayPal, West Union, etc.

### 6.What is your payment term?

Our payment term is T/T 100% or 30/70 or L/C at sight .

### 7.What is your delivery time?

Our delivery time is from 5 days to 30 days based on your quantity.

### 8.Do you offer OEM & ODM service?

Yes we offer OEM&ODM service.

### 9.Do you offer after-sales service?

Yes, we offer after-sales service. Any complaint for orders will be dealt with in time within 12 hours.

## Contact

---

Any enquiries or questions, please leave a message. Will get back to you within 24 hours!  
For any urgent enquiry, please get in touch as below:

-Email: sales04@launch-china.cn  
-Tel: (86-755) 8603 7559  
-Skype: launch\_04  
-Mob/whats APP: +86-1353050626



**董 萍** Doris Dong

Senior Sales Representative

☎ (86) 135 3050 6265

---

深圳市南山区南山大道1092号亿利达大厦B区3栋5003

Room 5003, Building 3, Yilida Building, No.1092  
Nanshan Road, Nanshan District, Shenzhen, China  
postal code 518054

---

☎ (86-755) 8603 7559

☎ (86-755) 8637 2611

✉ sales04@launch-china.cn

💻 www.launch-china.com

www.chinabalustrade.com