

Stainless Steel Glass Fencing Self Closing Spring Loaded [Glass Door Hinge](#)

Product Description

Product Name	Stainless steel glass fencing self closing spring loaded glass door hinge
Material	Stainless steel 304/316
Finish	Mirror polished or satin brushed
For Glass Thickness	8-10mm
Drill Glass Holes	Diameter 12mm holes required in glass
3 Types Available	1) Glass to glass hinge G-G1 2) Glass to round post hinge G-R1 3) Glass to square wall/post hinge G-W1
Manufacture Method	Stamping (2.5mm thick)
Maximum Glass Door Leaf	20kg
Minimum Order Quantity	one piece
Sample	Available to check quality before order
Factory Inspection	Available
OME & ODM Service	Available

3 Types Glass Gate Hinge

- 1) Glass to glass hinge
 - Model No.: G-G1
 - Net weight: 435g/piece



G-G 1

- 2) Glass to round post
- Model No.: G-R1
- Net weight: 300g/piece



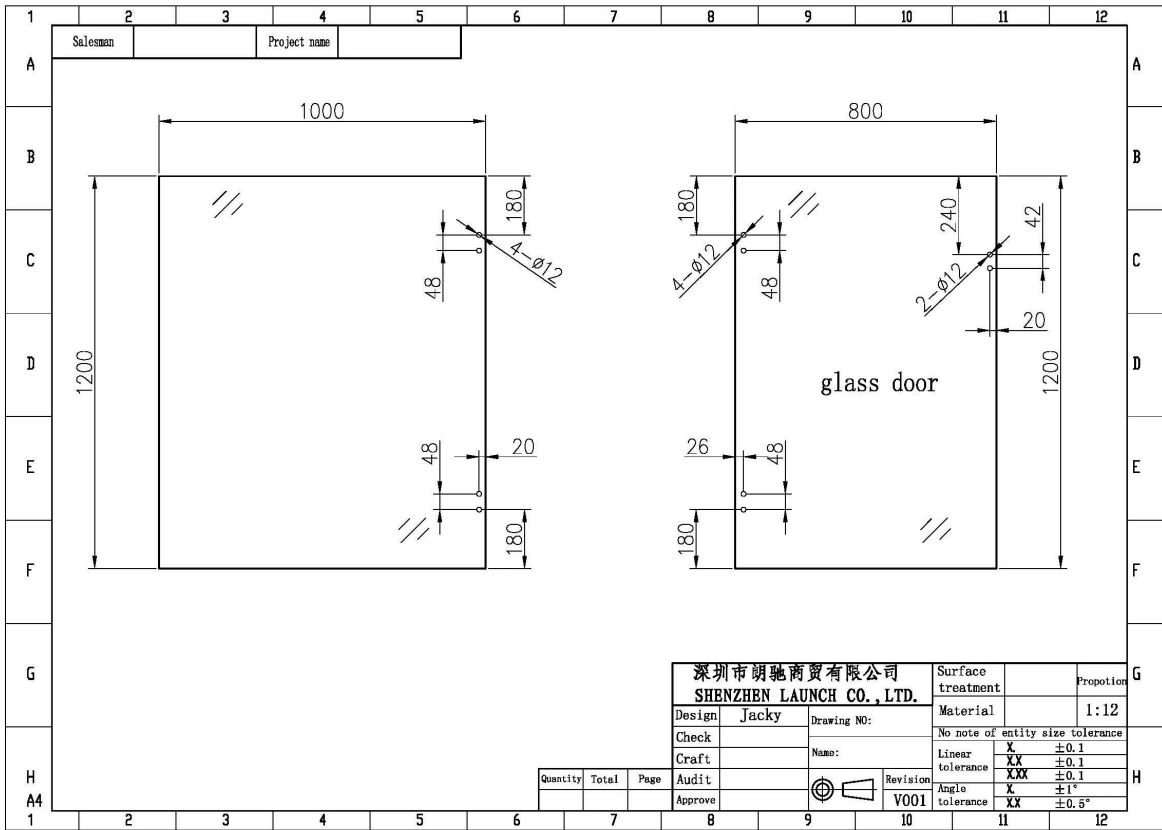
G-R 1

- 3) Glass to square post/wall hinge
- Model No.: G-W1
- Net weight: 320g/piece



G-W 1

4) Drilled glass hole size



Glass Fencing Hinge Projects





Glass Gate Hinge Packaging

1. One pair into one bubble bag, then into one white box.
2. Or packing as customers' requirements.



FAQ

1. Are you factory?
Yes, we are factory.

2.Do you offer free samples?

Yes, we offer free samples, but customers need to pay express charges.

3.What materials do you have?

We have the material of stainless steel 304, 316, 316L and Duplex 2205.

4.What is your MOQ?

MOQ of order required is 1 pc.

5.What kind of payment do you accept?

We accept the payment of T/T, LC, PayPal, West Union, etc.

6.What is your payment term?

Our payment term is T/T 100% or 30/70 or L/C at sight .

7.What is your delivery time?

Our delivery time is from 5 days to 30 days based on your quantity.

8.Do you offer OEM & ODM service?

Yes we offer OEM&ODM service.

9.Do you offer after-sales service?

Yes, we offer after-sales service. Any complaint for orders will be dealt with in time within 12 hours.

Contact

Any enquiries or questions, please leave a message. Will get back to you as soon as possible!
For any urgent enquiry, please get in touch as below:

-Email: sales04@launch-china.cn
-Tel: (86-755) 8603 7559
-Skype: launch_04
-Mob/whats APP: +86-13530506265



深圳市朗驰商贸有限公司
SHENZHEN LAUNCH CO., LTD.

朗驰国际有限公司
LAUNCH INTERNATIONAL LIMITED.

董 萍 Doris Dong

Senior Sales Representative

☎ (86) 135 3050 6265

深圳市南山区南山大道1092号亿利达大厦B区3栋5003

Room 5003, Building 3, Yilida Building, No.1092
Nanshan Road, Nanshan District, Shenzhen, China
postal code 518054

☎ (86-755) 8603 7559

☎ (86-755) 8637 2611

✉ sales04@launch-china.cn

🌐 www.launch-china.com

www.chinabalustrade.com