

## **Stainless Steel Glass Hinge Glass To Glass Spring Hinge Pool Fencing Hinge**

### **Description of stainless steel glass hinge-**

- Glass to glass heavy duty hinge, spring loaded type
- Model No.:G-G
- Material: stainless steel 304/316
- Finish: mirror/satin/black
- For glass thickness: 8-12.76mm
- Maximum door leaf weight : 30 kg /pair
- Maximum door leaf width : 900mm
- Spring can be adjusted for closing speed control
- Manufacture method:casting
- Required drill glass hole size: diameter 16mm
- Packaging: one pc into one plastic bag, then into one box. 12 pcs into one carton.
- For both commercial and modern house home design
- For both wholesale and retail (We are factory)

### **Photos of glass hinge , G-R**

Glass to glass hinge, with coned cap on the ends



Glass to glass post hinge, with flat cap on the ends



Glass to glass post hinge, with flat cap on the ends, in black powder coating



### **Other models for glass hinge**

Glass to square post/wall hinge, G-W









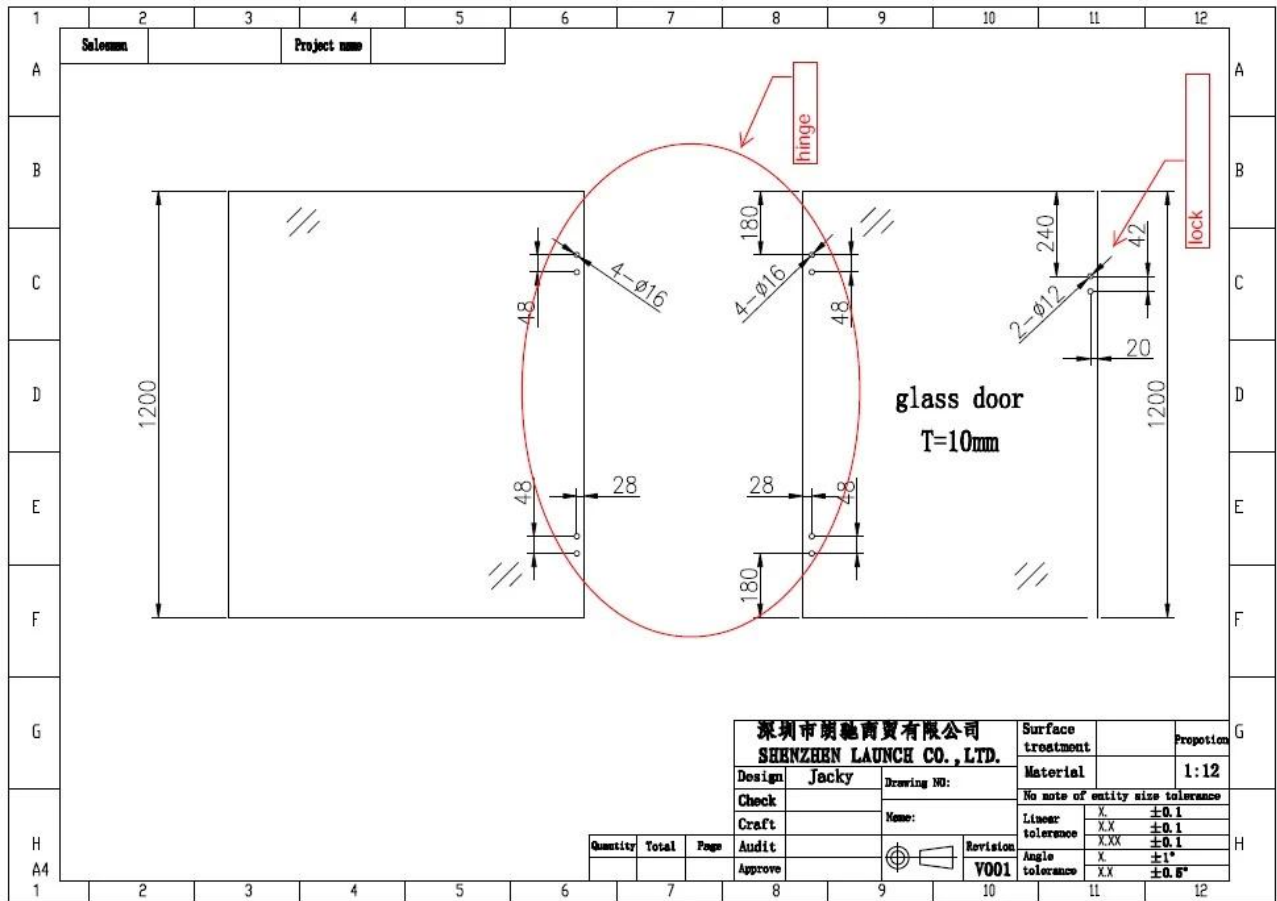
Glass to round post hinge, G-R



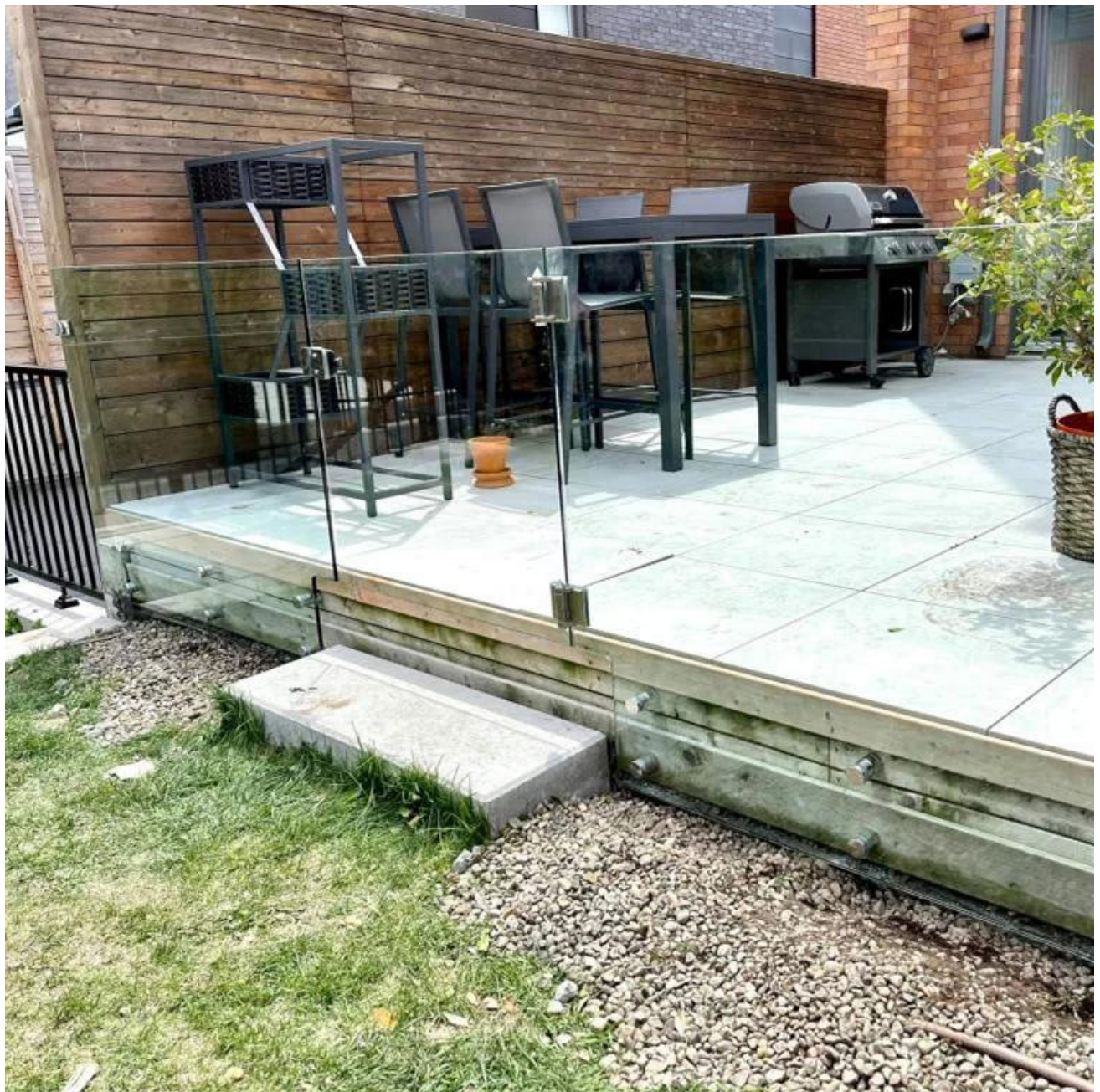




**Glass holes drawings required for glass hinge and glass latch-**



project photos of glass pool fence and glass balcony railing -







### **Contact Information**

Any inquiries or questions, please leave a message. Will get back to you as soon as possible!

For any urgent enquiry, please get in touch below:

Contact: Wendy

Email: [sales04@launch-china.cn](mailto:sales04@launch-china.cn)

Mob/WhatsApp/WeChat: +0086 159 8933 9827